

FIGURE 7-1—ELECTRICAL WIRING - MODELS F-47C and F-486

FIGURE 7-1—ELECTRICAL WIRING - MODELS F-47C and F-486

Key	Part Name	Group	Key	Part Name	Group
1	Cable Ass'y., Parking and Directional Light	7.568	17	Cable Ass'y., Tail, Stop and Directional Light, Right	7.576
2	Cable Ass'y., Headlight	7.546			
3	Harness, Headlight Cable Terminal Block	7.552	18	Cable Ass'y., Overdrive Solenoid to Governor	7.810
4	Cable Ass'y., No. 4,5 and 6 Spark Plug	7.360			
5	Cable Ass'y., No. 3 Spark Plug	7.360	19	Harness, Overdrive Wiring	7.812
6	Cable Ass'y., No. 2 Spark Plug	7.360	20	Harness, Courtesy Light Wiring	7.648
7	Cable Ass'y., No. 1 Spark Plug	7.360	21	Harness, Chassis Wiring	7.700
8	Cable Ass'y., Ignition (High Tension)	7.360	22	Cable Ass'y., Directional Indicator Flasher Fuse	7.636
9	Cable Ass'y., Glove Compartment Light	30.710			
10	Cable Ass'y., Air Conditioner	40.04	23	Fuse, Directional Indicator Flasher	7.636
11	Fuse, Air Conditioner Cable	40.04	24	Cable Ass'y., Horn Blowing Ring	7.536
12	Cable Ass'y., Ignition Switch Light	7.355	25	Cable Ass'y., Battery to Starter Motor	7.510
13	Cable Ass'y., Directional Indicator Light	7.638	26	Cable Ass'y., Ignition (Low Tension)	7.360
14	Harness, Body Wiring	30.702	27	Harness, Generator to Voltage Regulator	7.470
15	Cable Ass'y., Rear Compartment and License Light	30.712	28	Connector, Headlight Cable	7.546
16	Cable Ass'y., Tail, Stop and Directional Light, Left	7.576	29	Strap, Engine Ground	1.030
			30	Cable, Battery Ground	7.510

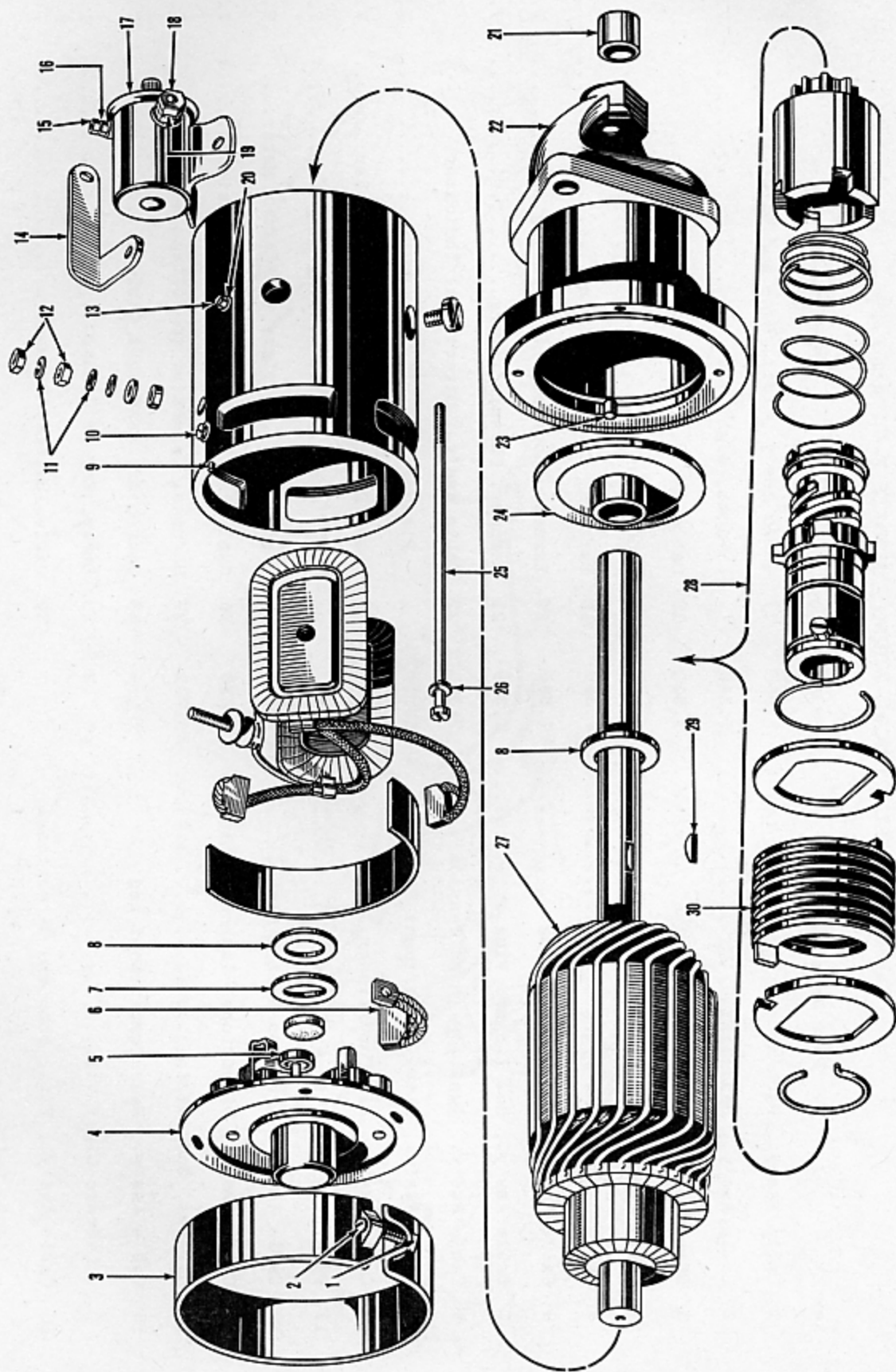


FIGURE 7-2—TYPICAL STARTER - EXPLODED VIEW

FIGURE 7-2—TYPICAL STARTER - EXPLODED VIEW

Key	Part Name	Group	Key	Part Name	Group
1	Nut, Cover Band Screw.....	7.238	16	Lockwasher, Relay Terminal.....	7.265
2	Screw, Cover Band.....	7.238	17	Solenoid.....	7.265
3	Band, Cover.....	7.238	18	Nut, Switch Terminal.....	7.265
4	Plate, Commutator End.....	7.234	19	Lockwasher, Switch Terminal.....	7.265
5	Spring, Motor Brush.....	7.236	20	Lockwasher, Solenoid Screw.....	7.265
6	Brush, Motor (Sets only).....	7.236	21	Bearing, Drive Housing.....	7.242
7	Thrustwasher, Bendix Drive.....	7.244	22	Housing, Drive.....	7.242
8	Thrustwasher, Armature.....	7.224	23	Dowel, Drive Housing.....	7.242
9	Pin, Commutator End Plate Dowel.....	7.234	24	Plate, Center.....	7.240
10	Screw, Brush.....	7.236	25	Bolt, Thru.....	7.234
11	Lockwasher, Field Coil Terminal Stud.....	7.228	26	Lockwasher, Thru Bolt.....	7.234
12	Nut, Field Coil Terminal Stud.....	7.228	27	Armature, Motor.....	7.224
13	Screw, Solenoid.....	7.265	28	Drive, Bendix.....	7.244
14	Connector, Solenoid.....	7.265	29	Key, Bendix Drive.....	7.244
15	Nut, Relay Terminal.....	7.265	30	Spring, Bendix Drive.....	7.244

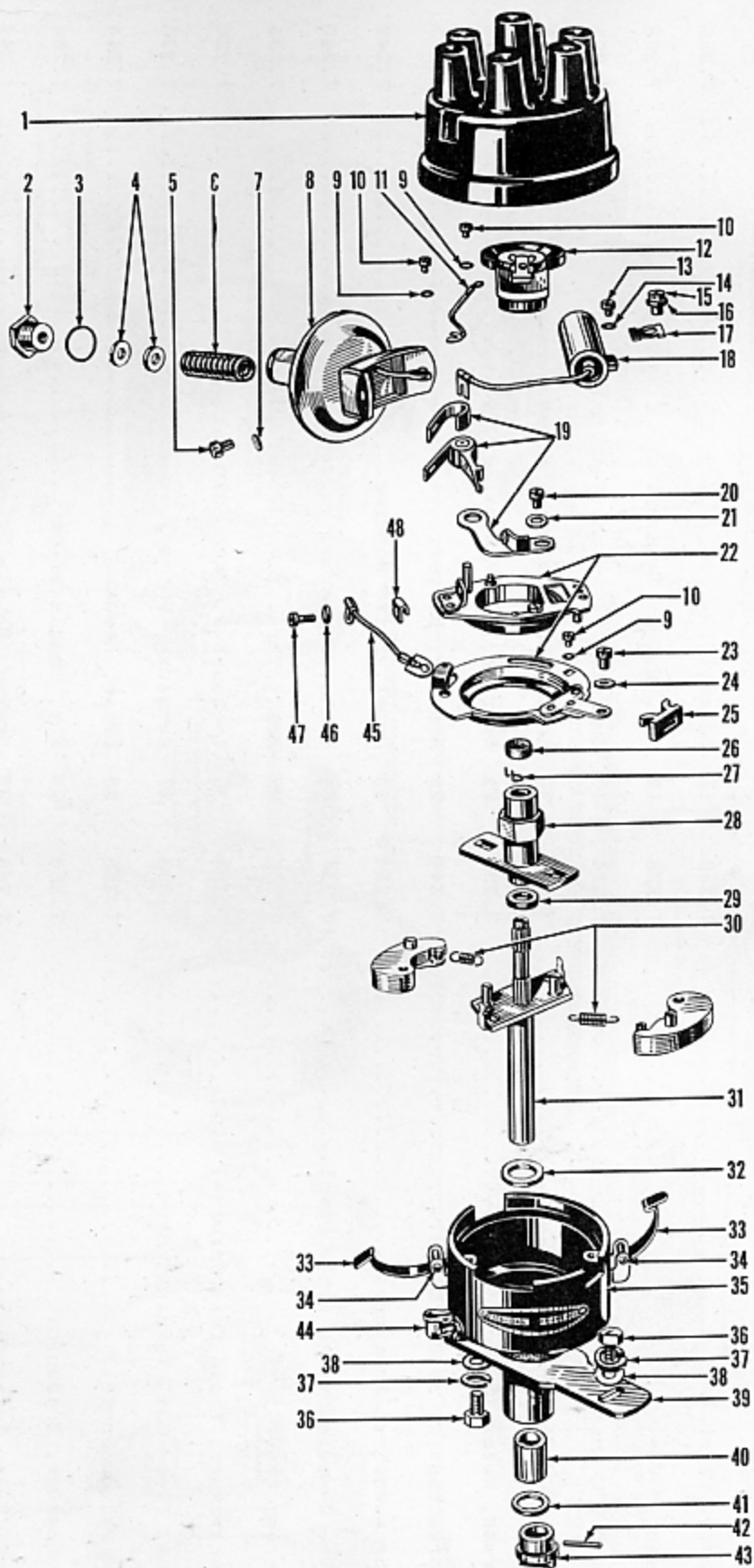


FIGURE 7-3—TYPICAL DISTRIBUTOR - EXPLODED VIEW

FIGURE 7-3—TYPICAL DISTRIBUTOR - EXPLODED VIEW

Key	Part Name	Group	Key	Part Name	Group
1	Cap, Distributor.....	7.302	28	Cam and Shaft, Distributor.....	7.332
2	Plug, Vacuum Chamber.....	7.338	29	Spacer, Cam and Shaft.....	7.332
3	Gasket, Vacuum Chamber Plug.....	7.338	30	Spring Set, Shaft and Governor Weight	7.324
4	Washer, Vacuum Chamber.....	7.338	31	Shaft and Governor, Distributor.....	7.324
5	Screw, Vacuum Chamber.....	7.334	32	Thrustwasher, Shaft and Governor	
6	Spring, Vacuum Chamber.....	7.338		Upper.....	7.324
7	Lockwasher, Vacuum Chamber Screw.....	7.334	33	Clip, Spring (Incl. in Distributor	
8	Chamber, Vacuum.....	7.334		Base Ass'y.) .....	7.302
9	Lockwasher, Breaker Plate Lead Screw.	7.310	34	Pin, Spring Clip Pivot (Incl. in	
10	Screw, Breaker Plate Lead.....	7.310		Distributor Base Ass'y.).....	7.302
11	Lead, Breaker Plate.....	7.318	35	Base, Distributor.....	7.302
12	Rotor, Distributor.....	7.332	36	Bolt, Advance Arm.....	7.308
13	Screw, Condenser.....	7.318	37	Lockwasher, Advance Arm Bolt.....	7.308
14	Lockwasher, Condenser Screw.....	7.318	38	Flatwasher, Advance Arm Bolt.....	7.308
15	Screw, Breaker Plate.....	7.310	39	Arm, Advance.....	7.308
16	Lockwasher, Breaker Plate Screw.....	7.310	40	Bushing, Lower.....	7.302
17	Clamp, Breaker Plate.....	7.310	41	Thrustwasher, Shaft and Governor	
18	Condenser, Distributor.....	7.318		Lower.....	7.324
19	Point Set, Breaker.....	7.316	42	Pin, Drive Shaft Coupling.....	7.330
20	Screw, Breaker Point Set.....	7.316	43	Coupling, Drive Shaft.....	7.330
21	Lockwasher, Breaker Point Set Screw...	7.316	44	Oiler, Distributor.....	7.302
22	Plate, Breaker.....	7.310	45	Lead, Breaker Plate.....	7.310
23	Screw, Terminal.....	7.300	46	Flatwasher, Breaker Point Set	
24	Lockwasher, Terminal Screw.....	7.300		Clip Screw.....	7.316
25	Cover, Terminal Slot.....	7.310	47	Screw, Breaker Point Set Clip.....	7.316
26	Felt, Cam and Shaft.....	7.332	48	Clip, Breaker Point Set.....	7.316
27	Snap Ring, Cam and Shaft.....	7.332			

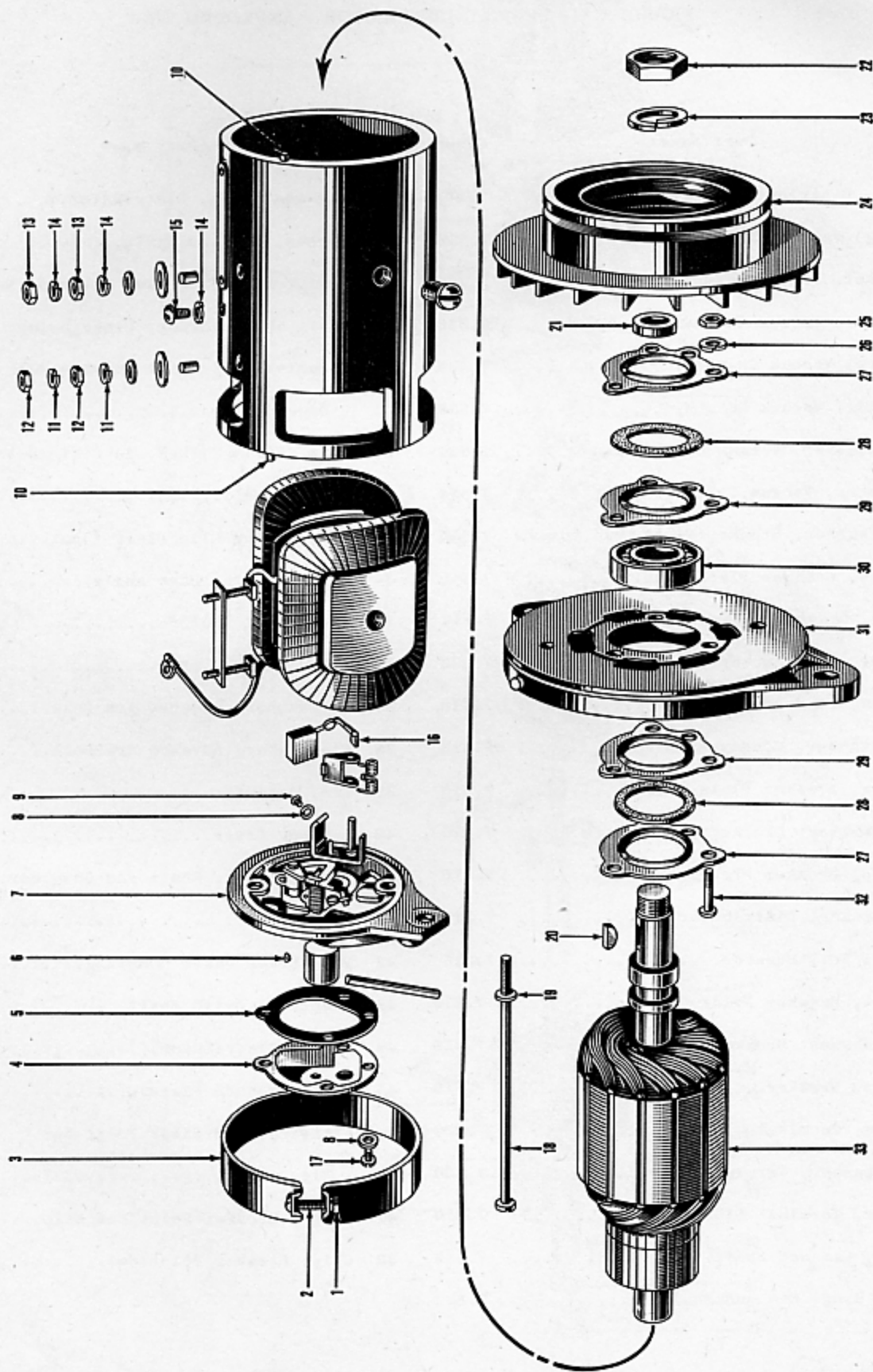


FIGURE 7-4—TYPICAL GENERATOR - EXPLODED VIEW

FIGURE 7-4—TYPICAL GENERATOR - EXPLODED VIEW

Key	Part Name	Group	Key	Part Name	Group
1	Nut.....	7.426	17	Screw.....	7.412
2	Screw.....	7.426	18	Bolt, Thru.....	7.412
3	Band, Generator Cover.....	7.426	19	Lockwasher.....	7.412
4	Retainer, Commutator End Plate		20	Key.....	7.434
	Bearing.....	7.412	21	Spacer, Drive Pulley.....	7.434
5	Gasket, Commutator End Plate		22	Nut.....	7.434
	Bearing Retainer.....	7.412	23	Lockwasher.....	7.434
6	Bearing, Commutator End Plate.....	7.412	24	Pulley, Drive.....	7.434
7	Plate, Commutator End.....	7.412	25	Nut.....	7.428
8	Lockwasher.....	7.412	26	Lockwasher.....	7.428
9	Screw.....	7.420	27	Retainer, Drive End Plate Bearing....	7.428
10	Dowel Pin.....	7.412	28	Seal, Drive End Plate.....	7.428
11	Lockwasher.....	7.402	29	Retainer, Drive End Plate Seal.....	7.428
12	Nut.....	7.402	30	Bearing, Drive End Plate.....	7.428
13	Nut.....	7.402	31	Plate, Drive End.....	7.428
14	Lockwasher.....	7.402	32	Screw, Drive End Plate Retainer.....	7.428
15	Screw.....	7.400	33	Armature.....	7.402
16	Brush Set.....	7.420			



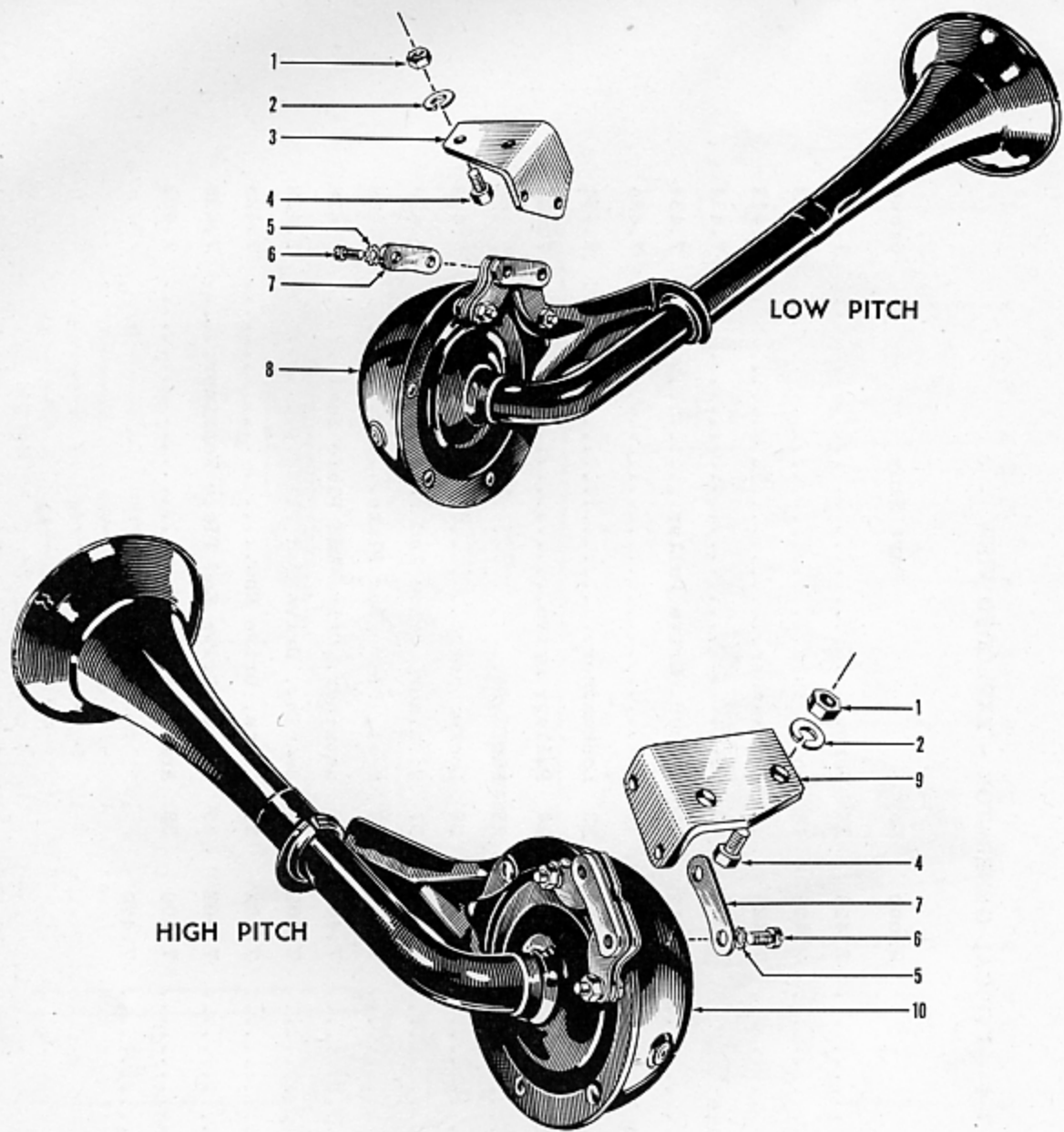


FIGURE 7-5—TYPICAL HORNS - STRAIGHT TYPE

Key	Part Name	Group	Key	Part Name	Group
1	Nut.....	7.522	6	Bolt.....	7.520
2	Lockwasher.....	7.522	7	Plate.....	7.522
3	Bracket, Horn (Right)	7.522	8	Horn, Low Pitch.....	7.520
4	Bolt.....	7.522	9	Bracket, Horn (left)	7.522
5	Lockwasher.....	7.520	10	Horn, High Pitch....	7.520

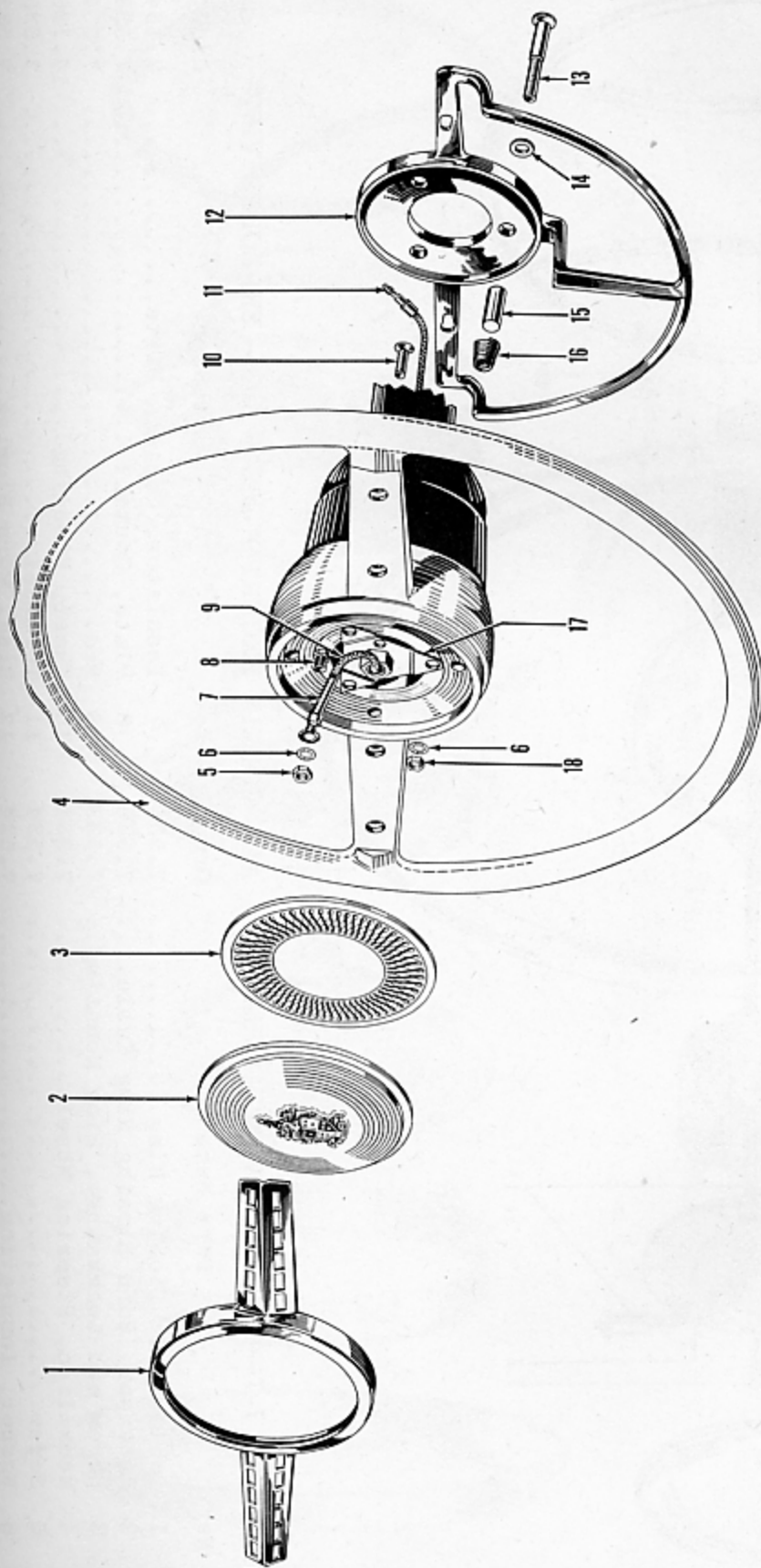


FIGURE 7-6—HORN BLOWING MECHANISM - MODELS F-47C-F486 - EXPLODED VIEW

Key	Part Name	Group	Key	Part Name	Group
1	Retainer, Steering Wheel Medallion...	7.531	10	Screw.....	7.531
2	Medallion, Steering Wheel.....	7.531	11	Terminal.....	7.536
3	Plate, Steering Wheel Medallion.....	7.531	12	Ring, Horn Blowing.....	7.533
4	Wheel, Steering.....	14.126	13	Screw.....	7.533
5	Nut.....	7.536	14	Washer (Vellumoid).....	7.533
6	Lockwasher.....	7.536	15	Sleeve, Ring Mounting Bolt.....	7.533
7	Sleeve.....	7.536	16	Spring, Ring Return.....	7.533
8	Screw.....	7.536	17	Plate, Ring Mounting.....	7.533
9	Cable, Horn Blowing Ring.....	7.536	18	Nut.....	7.533

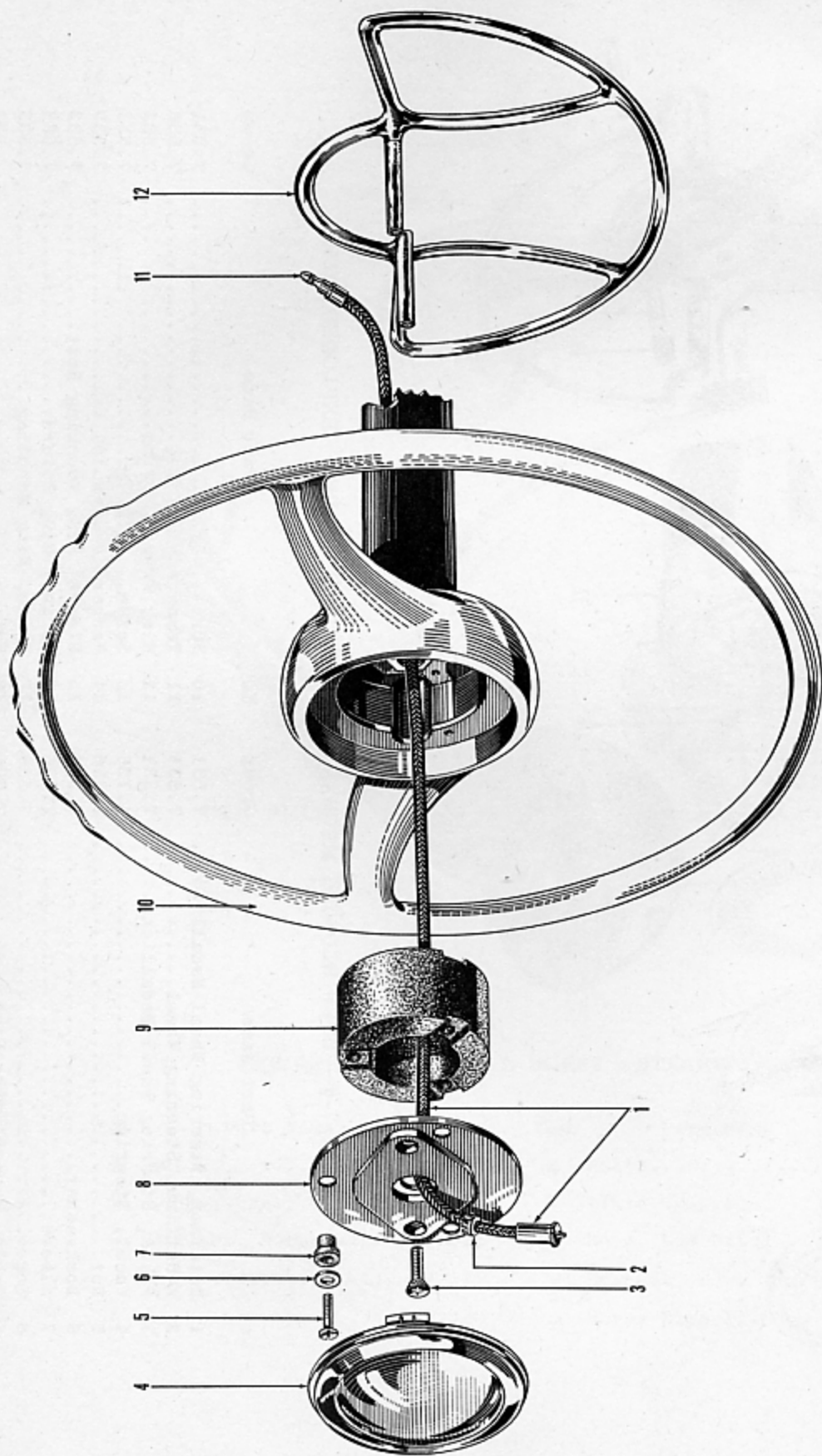


FIGURE 7-7—HORN BLOWING MECHANISM - ALL MODELS EXCEPT F-47C-F-486 - EXPLODED VIEW

Key	Part Name	Group	Key	Part Name	Group
1	Cable, Horn Blowing Ring.....	7.536	7	Insulator, Contact Plate.....	7.534
2	Retainer, Horn Blowing Ring Cable....	7.536	8	Plate, Contact.....	7.534
3	Screw and Lockwasher, Ring Mounting..	7.533	9	Pad.....	7.534
4	Medallion, Steering Wheel.....	7.531	10	Wheel, Steering.....	14.126
5	Screw.....	7.534	11	Terminal.....	7.536
6	Washer, Insulating.....	7.534	12	Ring, Horn Blowing.....	7.533

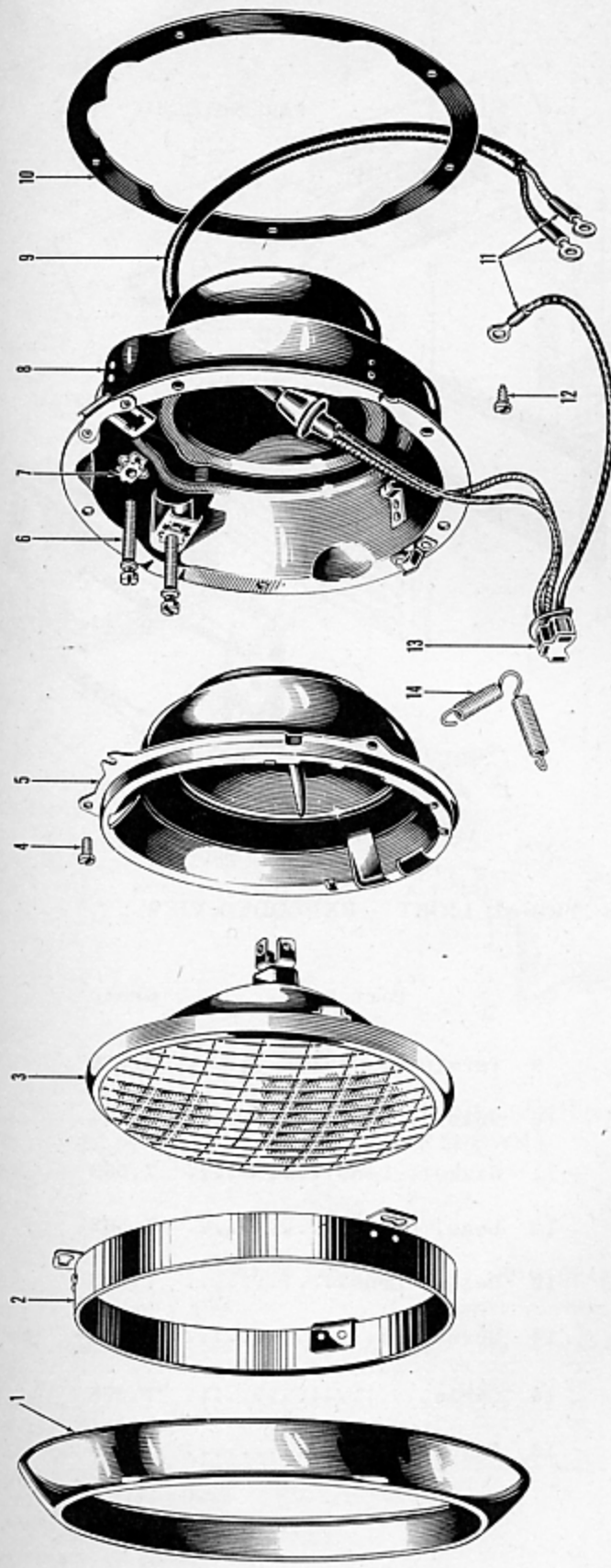


FIGURE 7-8—TYPICAL HEADLIGHT - EXPLODED VIEW

Key	Part Name	Group	Key	Part Name	Group
1	Door, Headlight.....	7.540	8	Not Serviced.....	
2	Ring, Sealed Beam Retaining.....	7.540	9	Cable.....	7.546
3	Sealed Beam Unit.....	7.540	10	Gasket, Headlight to Fender.....	7.540
4	Screw, Retaining Ring.....	7.540	11	Sleeve, Cable.....	7.546
5	Seat, Sealed Beam Unit.....	7.540	12	Screw, Ground.....	7.546
6	Screw, Sealed Beam Adjusting.....	7.540	13	Socket, Cable.....	7.546
7	Nut, Sealed Beam Adjusting Screw.....	7.540	14	Spring, Adjusting.....	7.540

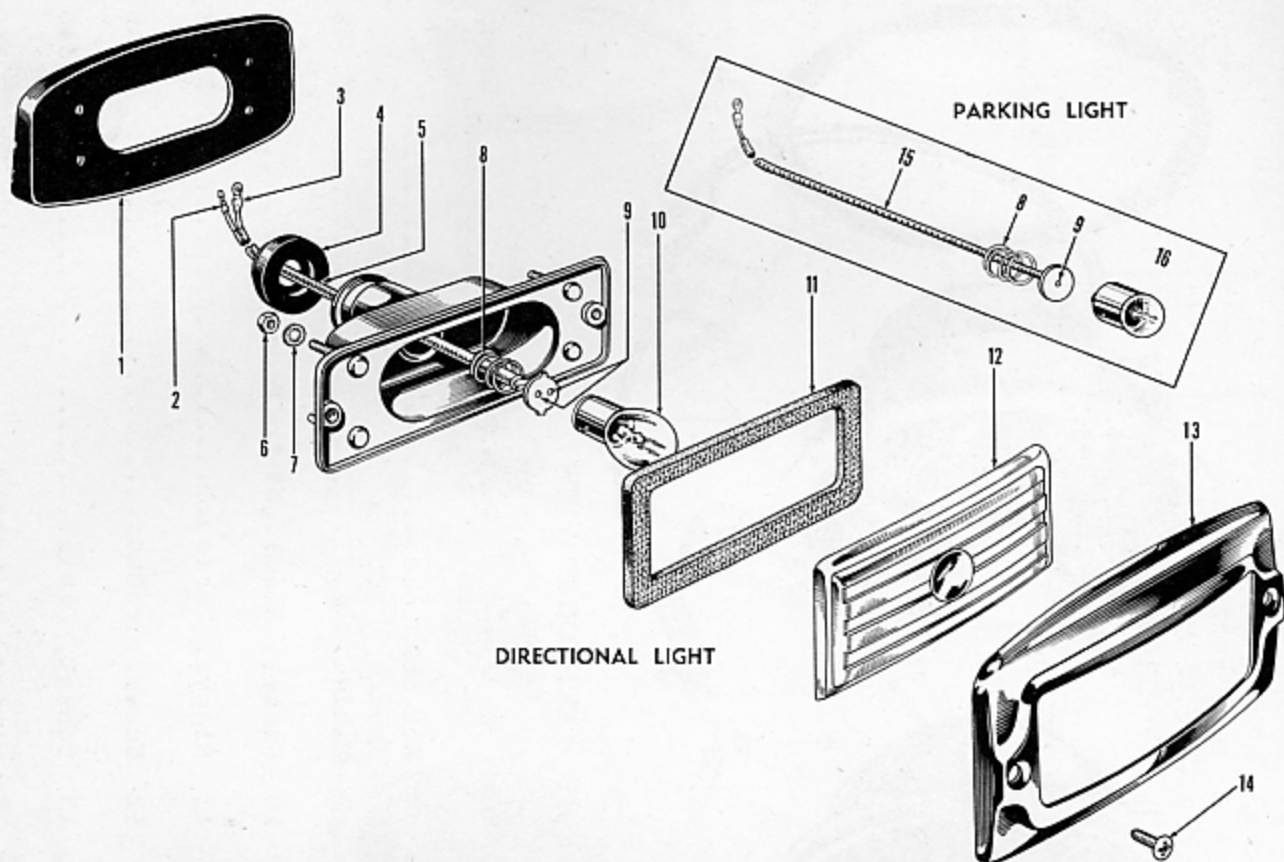


FIGURE 7-9—PARKING AND DIRECTIONAL LIGHT - EXPLODED VIEW

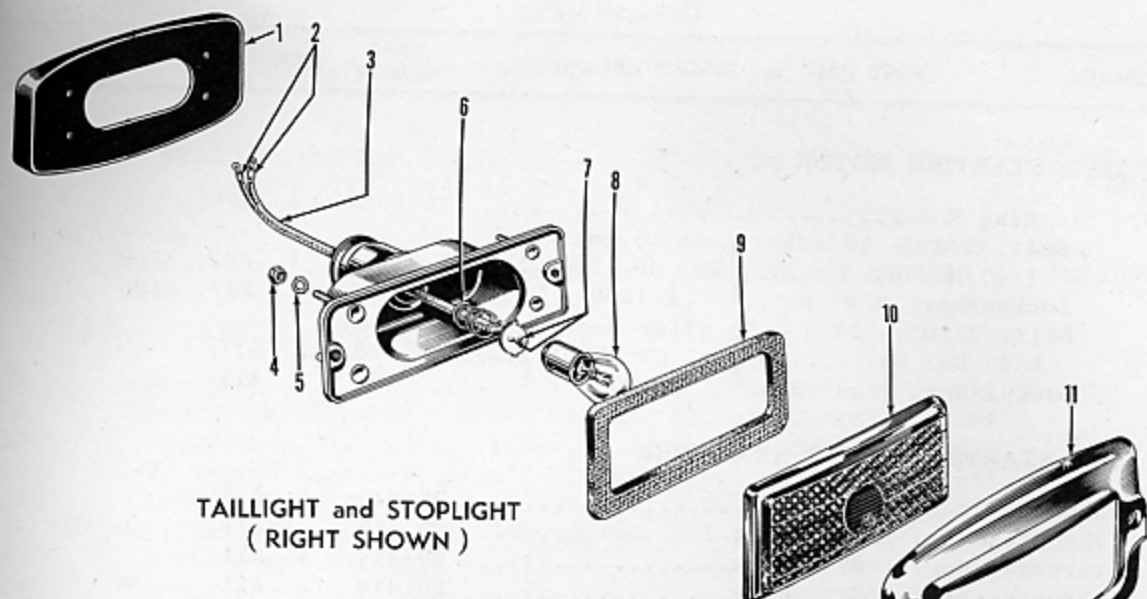
Key	Part Name	Group	Key	Part Name	Group
1	Pad, Light (Left).....	7.560	9	Terminal, Cable.....	7.568
2	Terminal, Cable.....	7.568	10	Bulb.....	7.564
3	Sleeve, Cable Terminal..	7.568	11	Gasket, Lens.....	7.563
4	Boot, Socket.....	7.568	12	Lens, Light.....	7.563
5	Cable.....	7.568	13	Bezel, Lens.....	7.563
6	Nut.....	7.560	14	Screw.....	7.563
7	Lockwasher.....	7.560	15	Cable.....	7.568
8	Spring, Socket.....	7.568	16	Bulb.....	7.564

Key

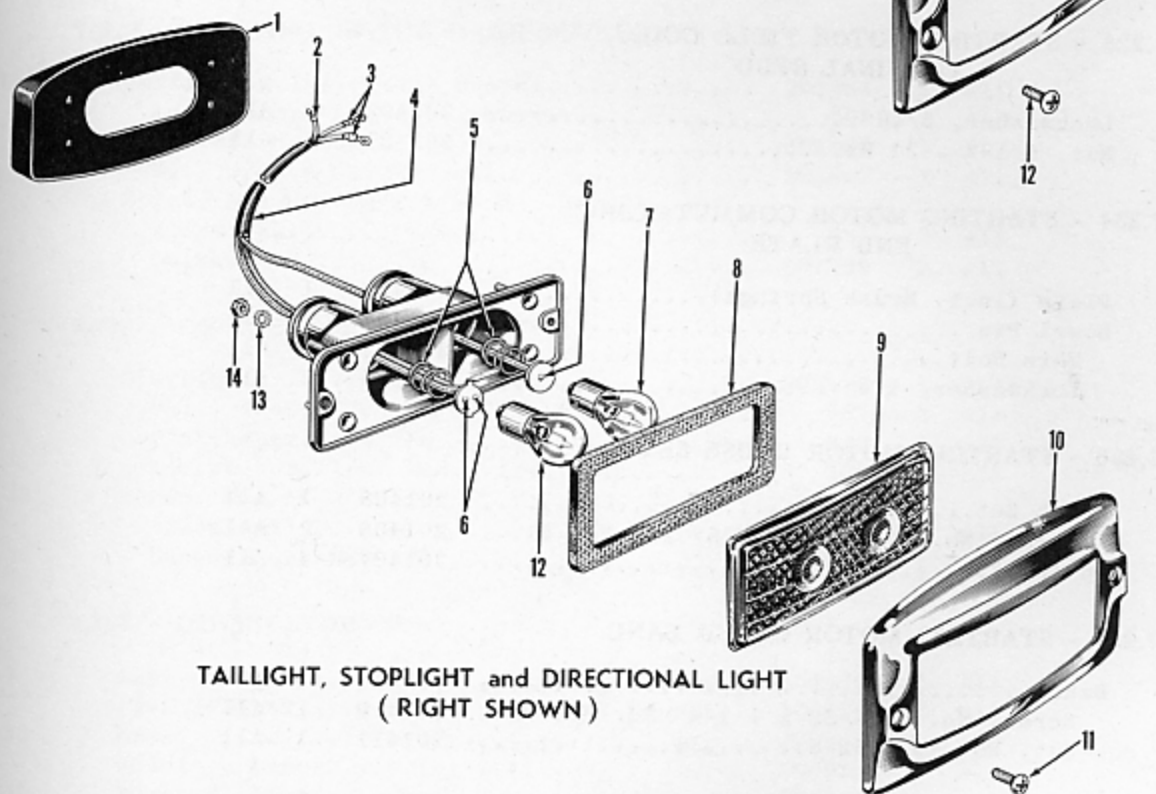
1 Pad  
2 Sle  
3 Cab  
4 Nut  
5 Loc  
6 Spr

Key

1 Pad  
2 Tex  
3 Sle  
4 Cal  
5 Spr  
6 Tex  
7 Bu



TAILLIGHT and STOPLIGHT  
(RIGHT SHOWN)



TAILLIGHT, STOPLIGHT and DIRECTIONAL LIGHT  
(RIGHT SHOWN)

FIGURE 7-10—TAILLIGHT AND STOPLIGHT - EXPLODED VIEW

Key	Part Name	Group	Key	Part Name	Group
1	Pad, Light (Right).....	7.570	7	Terminal, Cable.....	7.576
2	Sleeve, Cable.....	7.576	8	Bulb.....	7.574
3	Cable.....	7.576	9	Gasket, Lens.....	7.572
4	Nut.....	7.570	10	Lens.....	7.572
5	Lockwasher.....	7.570	11	Bezel, Lens.....	7.572
6	Spring, Socket.....	7.576	12	Screw.....	7.572

FIGURE 7-11—TAILLIGHT, STOPLIGHT AND DIRECTIONAL LIGHT - EXPLODED VIEW

Key	Part Name	Group	Key	Part Name	Group
1	Pad, Light (Right).....	7.570	8	Gasket, Lens.....	7.572
2	Terminal, Cable.....	7.576	9	Lens.....	7.572
3	Sleeve, Cable.....	7.576	10	Bezel, Lens.....	7.572
4	Cable.....	7.576	11	Screw.....	7.572
5	Spring, Socket.....	7.576	12	Bulb.....	7.574
6	Terminal, Cable.....	7.576	13	Lockwasher.....	7.570
7	Bulb.....	7.574	14	Nut.....	7.570

FIGURE NUMBER	GROUP	PART NAME and DESCRIPTION	PART NUMBER	QTY.	MODELS
<b>7.222 - STARTING MOTOR</b>					
1-1-124		Starting Motor.....	200620	1	All
		Bolt, 3/8" - 16 x 1 { up to Eng. }			
		1/4" Hx. Hd. .... { No. GP 15001, } ...	241	2	F47, K100
		Lockwasher, 3/8" Med.. { K-15001 } ...	192	2	F47, K100
		Bolt, 7/16" - 14 x 1 { after Eng. }			
		1/4" Hx. Hd. .... { No. GP 15001, } ...	265	2	All
		Lockwasher, 7/16" Med. { K-15001 } ...	193	2	All
<b>7.224 - STARTING MOTOR ARMATURE</b>					
7-2-27		Armature.....	201412	1	All
7-2-8		Thrustwasher, 1/64" Thick.....	201415	*	All
7-2-8		Thrustwasher, 1/32" Thick.....	201414	*	All
7-2-8		Thrustwasher, 3/64" Thick.....	201416	*	All
<b>7.228 - STARTING MOTOR FIELD COIL TERMINAL STUD</b>					
7-2-11		Lockwasher, 5/16".....	201402	2	All
7-2-12		Nut, 5/16" - 24 Hx. ....	201401	2	All
<b>7.234 - STARTING MOTOR COMMUTATOR END PLATE</b>					
7-2-4		Plate (incl. Brush Springs).....	201403	1	All
7-2-9		Dowel Pin.....	201404	2	All
7-2-25		Thru Bolt.....	201405	2	All
7-2-26		Lockwasher, 1/4".....	200975	2	All
<b>7.236 - STARTING MOTOR BRUSH SET</b>					
7-2-6		Brush Set.....	201406	1	All
7-2-10		Screw, No. 10 - 32 x 7/16" Fl. Hd. Sl. .	201408	2	All
7-2-5		Spring.....	201407	4	All
<b>7.238 - STARTING MOTOR COVER BAND</b>					
7-2-3		Band.....	201409	1	All
7-2-2		Screw, No. 10 - 32 x 1 1/4" Rd. Hd. Sl..	201410	1	All
7-2-1		Nut, No. 10 - 32 Sq. ....	201411	1	All
<b>7.240 - STARTING MOTOR CENTER PLATE</b>					
7-2-24		Plate (incl. Bearing).....	201417	1	All
<b>7.242 - STARTING MOTOR DRIVE HOUSING</b>					
7-2-22		Housing.....	201421	1	All
7-2-23		Dowel Pin.....	201422	1	All
7-2-21		Bearing.....	201423	1	All
<b>7.244 - STARTING MOTOR BENDIX DRIVE</b>					
7-2-28		Bendix Drive, Complete.....	201418	1	All
7-2-29		Key, 5/32" x 5/8" Woodruff No. 6.....	201420	1	All

\*As required

FIGURE NUMBER	GROUP	PART NAME and DESCRIPTION	PART NUMBER	QTY.	MODELS
7.244 - STARTING MOTOR, BENDIX DRIVE (CONT'D.)					
7-2-30		Spring.....	201419	1	All
7-2-7		Thrustwasher.....	201413	1	All
7.265 - STARTING MOTOR SOLENOID					
7-2-17		Solenoid.....	201424	1	All
7-2-13		Screw, No. 10 - 32 x 5/16" Rd. Hd. Sl. .	201427	2	All
7-2-20		Lockwasher, No. 10.....	200951	2	All
7-2-18		Nut, Switch Terminal, 5/16" - 24 Hx. ....	201426	2	All
7-2-19		Lockwasher, 5/16".....	201402	2	All
7-2-15		Nut, Relay Terminal, No. 10 - 32 Hx. ....	201425	1	All
7-2-16		Lockwasher, No. 10.....	200978	1	All
7-2-14		Connector.....	201428	1	All
7.270 - STARTING SWITCH (PUSH BUTTON)					
19-1-45		Switch (on Instrument Board).....	201464	1	All
		Lockwasher, 5/8" Int. Tooth.....	308	1	All
		Nut, 5/8" - 32 Hx. ....	201465	1	All
		Nut, 5/8" - 32 (Chrome).....	201927	1	All
		Screw, No. 8 - 32 x 5/8" Rd. Hd. Sl. (Terminal).....	251	2	All
		Lockwasher.....	201356	2	All
7.300 - DISTRIBUTOR					
		Distributor.....	200622	1	All
		Bolt, 1/4" - 20 x 5/8" Hx. Hd. ....	257	1	All
		Flatwasher, 1/4" Sm. ....	243	1	All
		Lockwasher, 1/4" Med. ....	190	1	All
7-3-23		Screw, No. 10 - 32 x 1/4" Fil. Hd. Sl. (Terminal).....	200977	1	All
7-3-24		Lockwasher, No. 10.....	200978	1	All
7.302 - DISTRIBUTOR CAP					
7-3-1		Cap.....	200970	1	All
		Plug (Rubber).....	200971	1	All
7-3-35		Base.....	200937	1	All
		Bushing, Upper.....	200939	1	All
7-3-40		Bushing, Lower.....	200938	1	All
7-3-44		Oiler.....	200941	1	All
		Wick.....	200940	1	All
7.308 - DISTRIBUTOR ADVANCE ARM					
7-3-39		Arm.....	200972	1	All
7-3-36		Bolt, 1/4" - 20 x 5/8" Hx. Hd. ....	200973	2	All
7-3-38		Flatwasher, 1/4".....	200974	2	All
7-3-37		Lockwasher, 1/4".....	200975	2	All
7.310 - DISTRIBUTOR BREAKER PLATE					
7-3-22		Plate Assy., Complete.....	200949	1	All
7-3-15		Screw, No. 10 - 32 x 5/16" Fil. Hd. Sl..	200950	2	All



FIGURE NUMBER	GROUP	PART NAME and DESCRIPTION	PART NUMBER	QTY.	MODELS
7.310 - DISTRIBUTOR BREAKER PLATE (CONT'D.)					
7-3-16		Lockwasher, No. 10.....	200951	2	All
7-3-17		Clamp, Upper Plate.....	200952	2	All
7-3-45		Lead (incl. Terminals).....	200960	1	All
7-3-11		Lead (incl. Terminals).....	200961	1	All
7-3-10		Screw, No. 6 - 32 x 5/32" Fil. Hd. Sl. .	200962	3	All
7-3-9		Lockwasher, No. 6.....	200963	3	All
7-3-25		Cover, Terminal Slot.....	200964	1	All
7.316 - DISTRIBUTOR BREAKER POINT SET					
7-3-19		Point Set.....	200953	1	All
7-3-20		Screw, No. 8 - 32 x 3/16" Fil. Hd. Sl. .	200955	1	All
7-3-21		Lockwasher, No. 8.....	200956	1	All
7-3-48		Clip.....	200954	1	All
7-3-47		Screw, No. 6 - 32 x 5/16" Rd. Hd. Sl. .	200958	1	All
7-3-46		Flatwasher, No. 6.....	200957	1	All
7.318 - DISTRIBUTOR CONDENSER					
7-3-18		Condenser.....	200959	1	All
7-3-13		Screw, No. 6 - 32 x 5/32" Fil. Hd. Sl. .	200962	1	All
7-3-14		Lockwasher, No. 6.....	200963	1	All
7.324 - DISTRIBUTOR DRIVE SHAFT AND GOVERNOR					
7-3-31		Shaft and Governor.....	200942	1	All
7-3-32		Thrustwasher, Upper.....	200944	1	All
7-3-41		Thrustwasher, Lower.....	200943	1	All
7-3-30		Spring Set.....	200947	1	All
		Spring, Anti-Rattle.....	200948	1	All
7.330 - DISTRIBUTOR DRIVE SHAFT					
7-3-43		Coupling.....	200945	1	All
7-3-42		Pin.....	200946	1	All
7.332 - DISTRIBUTOR CAM					
7-3-28		Cam and Shaft.....	200965	1	All
7-3-29		Spacer.....	200966	1	All
7-3-27		Snap Ring.....	200967	1	All
7-3-26		Felt.....	200968	1	All
7-3-12		Rotor.....	200969	1	All
7.334 - DISTRIBUTOR VACUUM CHAMBER					
7-3-8		Chamber.....	200976	1	All
7-3-5		Screw, No. 10 - 32 x 1/4" Fil. Hd. Sl. .	200977	2	All
7-3-7		Lockwasher, No. 10.....	200951	2	All
7.338 - DISTRIBUTOR VACUUM CHAMBER SPRING					
7-3-6		Spring.....	202742	1	All
7-3-4		Washer, .010.....	202744	*	All
7-3-4		Washer, .032.....	202743	*	All

\*As required

FIGURE NUMBER	GROUP	PART NAME and DESCRIPTION	PART NUMBER	QTY.	MODELS
7.338 - DISTRIBUTOR VACUUM CHAMBER SPRING (CONT'D.)					
7-3-4		Washer, .065.....	202745	* All	
7-3-2		Plug.....	202746	1 All	
7-3-3		Gasket.....	202748	* All	
7-3-3		Gasket.....	202747	* All	
7.340 - DISTRIBUTOR VACUUM CHAMBER TUBE					
		Tube (incl. Nuts).....	200794	1 All	
		Tube (incl. Nuts) (Manual Choke Carb.)....	203051	1 All	
		Tube (incl. Nuts) (Dual Manifold).....	203386	1 F486	
		Nut, 3/8" - 24 Hx. 3/16" Inv. Fl. Tube..	202142	2 All	
		Elbow, 3/8" - 24 x 1/8" Pipe 90° x 3/16"			
		Inv. Fl. Tube.....	202126	1 All	
		Connector, 3/8" - 24 x 1/8" Pipe 3/16"			
		Inv. Fl. Tube.....	202127	1 All	
7.342 - DISTRIBUTOR MOUNTING ADAPTER					
1-1-2		Adapter.....	200162	1 All	
		Stud, 3/8" - 16 x 1 3/8".....	200164	1 All	
		Lockwasher, 3/8" Med. ....	192	1 All	
		Nut, 3/8" - 16 Hx. ....	204	1 All	
7.344 - DISTRIBUTOR MAIN DRIVE SHAFT					
		Shaft and Coupling.....	200165	1 All	
7.346 - IGNITION COIL					
1-1-3		Coil (incl. High Tension Nut).....	200256	1 All	
		Bolt, 1/4" - 28 x 5/8" Hx. Hd. ....	260	2 All	
		Lockwasher, 1/4" Int. Ext. Tooth.....	400	2 All	
		Nut, 1/4" - 28 Hx. ....	261	2 All	
		Nut, No. 10 - 32 Hx. (Terminal).....	202	2 All	
		Lockwasher, No. 10 Med. ....	254	2 All	
		Bracket, Mounting.....	200793	1 All	
		Bolt, 5/16" - 18 x 1/2" Hx. Hd. ....	322	2 All	
		Lockwasher, 5/16" Int. Tooth.....	200	2 All	
1-1-9		Nut, Terminal (High Tension Cable).....	202749	1 All	
7.350 - IGNITION SWITCH					
19-1-34		Switch, up to Serial F47-36877, F47C- 1,033,604, K100-65372, K101-2,005,405...	201354	1 F47, F47C, K100, K101	
		Nut, 1" - 32.....	201355	1 F47, F47C, K100, K101	
		Bezel (Chrome).....	203305	1 F47, F47C, K100, K101	
		Screw, No. 8 - 32 x 5/16" Rd. Hd. Sl. (Terminal).....	251	2 F47, F47C, K100, K101	
		Lockwasher, No. 8.....	201356	2 F47, F47C, K100, K101	
		Nut, No. 8 - 32 Hx. (Terminal).....	272	3 F47, F47C, K100, K101	
		Lockwasher, No. 8.....	273	3 F47, F47C, K100, K101	
19-1-34		Switch, after Serial F47-36877, F47C- 1,033,604, K100-65372, K101-2,005,405...	203186	1 All	
		Bezel (Chrome).....	202929	1 All	
		Nut, No. 10 - 32 Hx. (Terminal).....	202	3 All	
		Lockwasher, No. 10 Int. Tooth.....	259	3 All	

\*As required

FIGURE NUMBER	GROUP	PART NAME and DESCRIPTION	PART NUMBER	QTY.	MODELS
7.352 - IGNITION SWITCH LOCK CYLINDER AND KEY					
		Cylinder and Key.....	201898	1	All
		Key, Blank, KF Code No. 250 - 499.....	200655	*	All
		Key, Cut, KF Code No. 250 - 499.....	201890	*	All
		Key, Blank, CH Code No. 501 - 750.....	202495	*	All
		Key, Cut, CH Code No. 501 - 750.....	202494	*	All
		Cylinder and Key Kit, up to Body No. F47-6618, K100-11654.....	201911	*	F47, K100
		Cylinder and Key Kit, after Body No. F47-6618, K100-11654.....	201943	*	All
NOTE: Cylinder and Key Kit includes (1) Ignition Lock Cylinder, (2) Front Door Lock Cylinders and (2) Keys.					
7.355 - IGNITION SWITCH LIGHT					
		Bezel.....	202672	1	F47C, F486
		Retainer.....	201461	1	F47C, F486
7-1-12		Cable and Socket.....	202671	1	F47C, F486
		Bulb, 6-8V, 1 C.P., S.C. ....	201462	1	F47C, F486
7.360 - IGNITION CABLES					
7-1-26		Cable, Primary (Low Tension).....	200802	1	All
7-1-8		Cable, Secondary (High Tension).....	200803	1	All
7-1-7		Cable, No. 1, Spark Plug.....	200796	1	All
7-1-6		Cable, No. 2, Spark Plug.....	200797	1	All
7-1-5		Cable, No. 3, Spark Plug.....	200798	1	All
7-1-4		Cable, Nos. 4, 5 and 6, Spark Plug.....	200799	3	All
		Nipple.....	201171	8	All
7.375 - SPARK PLUG					
1-1-17		Spark Plug (14 M.M.).....	201230	6	All
		Gasket (14 M.M.).....	202939	6	All
7.400 - GENERATOR					
1-1-33		Generator.....	200170	1	All
		Bolt, 5/16" - 24 x 1" Hx. Hd. ....	210	2	All
		Locknut, 5/16" - 24 Hx. ....	326	2	All
7-4-15		Screw, No. 10 - 32 x 5/16" Rd. Hd. Sl. (Ground Terminal).....	201427	1	All
7-4-14		Lockwasher, No. 10.....	200978	1	All
7.402 - GENERATOR ARMATURE					
7-4-33		Armature.....	201444	1	All
7-4-12		Nut, No. 14 - 24 Hx. (Armature Terminal)..	201344	2	All
7-4-11		Lockwasher, No. 14.....	201430	2	All
7-4-13		Nut, No. 10 - 32 (Field Terminal).....	201431	2	All
7-4-14		Lockwasher, No. 10.....	200978	2	All

## ELECTRICAL

7

FIGURE NUMBER	GROUP	PART NAME and DESCRIPTION	PART NUMBER	QTY.	MODELS
7.412 - GENERATOR COMMUTATOR END PLATE					
7-4-7		Plate.....	201432	1	All
7-4-10		Dowel Pin.....	201404	1	All
7-4-18		Thru Bolt.....	201433	2	All
7-4-19		Lockwasher, 1/4".....	200975	2	All
7-4-6		Bearing.....	201434	1	All
		Gasket.....	201442	1	All
7-4-4		Retainer, Bearing.....	201435	1	All
7-4-17		Screw, No. 8 - 32 x 5/16" Fil. Hd. Sl. .	201436	4	All
7-4-8		Lockwasher, No. 8.....	201437	4	All
7-4-5		Gasket.....	201438	1	All
7.420 - GENERATOR BRUSH					
7-4-16		Brush Set.....	201440	1	All
7-4-9		Screw, No. 8 - 32 x 1/4" Rd. Hd. Sl. ...	201441	2	All
		Lockwasher, No. 8.....	201437	2	All
7.426 - GENERATOR COVER BAND					
7-4-3		Band.....	201439	1	All
7-4-2		Screw, No. 10 - 32 x 1 1/2" Rd. Hd. Sl..	201410	1	All
7-4-1		Nut, No. 10 - 32 Sq. ....	201411	1	All
7.428 - GENERATOR DRIVE END PLATE					
7-4-31		Plate.....	201445	1	All
		Oiler.....	201446	1	All
7-4-30		Bearing.....	201447	1	All
7-4-27		Retainer.....	201448	2	All
7-4-28		Seal.....	201451	2	All
7-4-29		Retainer.....	201452	2	All
7-4-32		Screw, No. 10 - 32 x 7/8" Rd. Hd. Sl. ..	201449	3	All
7-4-26		Lockwasher, No. 10.....	200978	3	All
7-4-25		Nut, No. 10 - 32 Hx. ....	201450	3	All
		Slinger.....	201443	1	All
7.434 - GENERATOR DRIVE PULLEY					
7-4-24		Pulley.....	201453	1	All
7-4-20		Key, 1/8" x 5/8" Woodruff No. 5.....	201454	1	All
7-4-23		Lockwasher.....	201456	1	All
7-4-22		Nut.....	201455	1	All
7-4-21		Spacer (used with Cast Iron Pulley only)..	201457	1	All
7.460 - GENERATOR ADJUSTING LINK					
1-1-32		Link.....	200171	1	All
		Bolt, 5/16" - 18 x 3/4"			
		Hx. Hd. .... { to	183	1	All
		Flatwasher, 5/16" Lg. .... { Generator }	300	1	All
		Lockwasher, 5/16" Med. .... }	240	1	All
		Bolt, 3/8" - 16 x 7/8"			
		Hx. Hd. .... { to Water }	268	1	All
		Lockwasher, 3/8" Med. .... { Pump }	192	1	All
		Clip.....	200172	1	All

FIGURE NUMBER	GROUP	PART NAME and DESCRIPTION	PART NUMBER	QTY.	MODELS
7.465 - GENERATOR MOUNTING BRACKET					
1-1-34		Bracket.....	200173	1	All
		Bolt, 3/8" - 16 x 7/8" Hx. Hd. ....	268	2	All
		Lockwasher, 3/8" Med. ....	192	2	All
7.470 - GENERATOR VOLTAGE REGULATOR					
		Regulator.....	201343	1	All
		Screw, No. 12 - 14 x 5/8" Pan Hd. Sl. ..	497	3	All
		Screw, No. 10 - 32 x 5/16" Rd. Hd. Sl. (Terminal).....	266	3	All
		Lockwasher, No. 10 Int. Tooth.....	259	3	All
7-1-27		Harness, Generator to Voltage Regulator...	202727	1	All except F47
7.495 - AMMETER					
		Ammeter.....	201382	1	F47, F47C, F485, F486
		Ammeter (Green).....	201595	1	K100
		Ammeter (Sandtone Beige).....	202789	1	K100, K101, K481, K482
		Gasket.....	201379	1	F47, F47C, F485, F486
		Screw, No. 8 - 32 x 1/4" Rd. Hd. Sl. ...	310	2	F47, F47C, F485, F486
		Screw, No. 8 - 32 x 1/4" Fil. Hd. Sl. ..	357	2	K100, K101, K481, K482
		Ammeter (R.H.D.).....	203496	1	F485
		Ammeter (R.H.D.).....	203497	1	K481
		Nut, No. 10 Int. Tooth (Terminal).....	202	2	All
		Lockwasher, No. 10 Int. Tooth.....	259	2	All
7.500 - STORAGE BATTERY					
		Battery, serviced at any Battery Service Station.			
		Bolt, 3/8" - 16 x 10 7/8".....	201348	2	All
		Flatwasher, 3/8" Sm. ....	247	2	All
		Wing Nut, 3/8" - 16.....	269	2	All
		Retainer.....	201347	1	All
		Support.....	201349	1	All
		Bolt, 5/16" - 24 x 7/8" Hx. Hd. ....	270	4	All
		Flatwasher, 5/16" Lg. ....	300	4	All
		Lockwasher, 5/16" Med. ....	240	4	All
7.510 - BATTERY CABLES					
7-1-30		Cable, Battery Ground.....	201352	1	All
		Bolt, 5/16" - 18 x 1 1/4" { to } Sq. Hd. .... { Battery } ...	201345	1	All
		Nut, 5/16" - 18 Hx. .... { } ...	201346	1	All
		Bolt, 3/8" - 24 x 1" Hx. Hd. ....	327	1	All
		Lockwasher, 3/8" Int. Ext. { to Ground } Tooth..... { Terminal } ..	221	1	All
		Nut, 3/8" - 24 Hx. ....	188	1	All
7-1-25		Cable, Battery to Starter Motor.....	201351	1	All
		Bolt, 5/16" - 18 x 1 1/4" Sq. Hd. ....	201345	1	All
		Nut, 5/16" - 18 Hx. ....	201346	1	All
		Clip (on Steering Column).....	201353	1	All
		Nut, 5/16" - 24 Hx. ....	189	1	All
		Lockwasher, 5/16" Med. ....	240	1	All

FIGURE NUMBER	GROUP	PART NAME and DESCRIPTION	PART NUMBER	QTY.	MODELS		
7.520 - HORNS							
		Horn, High Pitch (Curved Type) Mounted					
		Left.....	201357	1	F47, K100		
		Horn, Low Pitch (Curved Type) Mounted					
		Right.....	201358	1	F47, K100		
		Bolt, 5/16" - 24 x 5/8" Hx. Hd. ....	274	4	F47, K100		
		Lockwasher, 5/16".....	240	4	F47, K100		
		Sleeve.....	200997	2	F47, K100		
7-5-10		Horn, High Pitch (Straight Type) Mounted					
		Left.....	201641	1	All		
7-5-8		Horn, Low Pitch (Straight Type) Mounted					
		Right.....	201642	1	All		
7-5-6		Bolt (Horn to Bracket) 1/4" - 28 x 3/4" Rd. Hd. Sl. ....	386	4	All		
7-5-5		Lockwasher, 1/4" Ext. Tooth.....	370	4	All		
		Screw, No. 8 - 32 x 1/4" Rd. Hd. Sl. (Terminal).....	310	2	All		
		Lockwasher, No. 8 Ext. Tooth.....	447	2	All		
7.522 - HORN MOUNTING BRACKET							
7-5-3		Bracket, Right (for Straight Type Horn)...	202347	1	All		
7-5-9		Bracket, Left (for Straight Type Horn)....	202348	1	All		
7-5-7		Plate.....	202346	4	All		
7-5-4		Bolt, 5/16" - 24 x 3/4" Hx. Hd. ....	224	4	All		
7-5-2		Lockwasher, 5/16" Ext. Tooth.....	348	8	All		
7-5-1		Nut, 5/16" - 24 Hx. ....	189	4	All		
7.525 - HORN RELAY							
		Relay.....(up to Body No. F47-16384, ).....	201359	1	F47, K100		
		Resistor..( K100-23110 ).....	202205	1	F47, K100		
		Relay, after Body No. F47-16384, K100-23110.....	202467	1	All		
		Bolt, 1/4" - 20 x 1/2" Hx. Hd. ....	179	2	All		
		Screw, No. 10 - 12 x 3/8" Pan Hd. Sl. ..	377	2	All		
		Lockwasher, 1/4" Int. Tooth.....	275	2	All		
		Screw, No. 8 - 32 x 5/16" Rd. Hd. Sl. (Terminal).....	251	4	All		
		Lockwasher, No. 8.....	201356	4	All		
7.530 - HORN BUTTON							
		Cable.....	201213	1	F47, K100		
		Spring and Seat, 1 7/16" Diam. ....	} up to Serial	..	201208	1	F47, K100
		Insulator.....					
		Spring and Seat, 7/16" Diam. ....	} K100-5120	..	201212	1	F47, K100
		Terminal.....					
7.531 - HORN MEDALLION (ON STEERING WHEEL)							
7-7-4		Medallion.....	201971	1	F47, F485		
7-7-4		Medallion (Green).....	201972	1	K100		
7-7-4		Medallion (Sandtone Beige).....	202705	1	K100, K101, K481, K482		
7-6-2		Medallion.....	202463	1	F47C, F486		

FIGURE NUMBER	GROUP	PART NAME and DESCRIPTION	PART NUMBER	QTY.	MODELS
7.531 - HORN MEDALLION (ON STEERING WHEEL) (CONT'D.)					
7-6-3		Plate.....	202462	1	F47C, F486
7-6-1		Retainer.....	202461	1	F47C, F486
7-6-10		Screw, No. 6 - 32 x 1/2" Fl. Hd. Cr. Rec. ....	568	4	F47C, F486
7.532 - HORN BLOWING RING KIT					
		Horn Blowing Ring Kit.....	202276	1	F47, F485
		Horn Blowing Ring Kit.....	202277	1	K100, K101, K481, K482
7.533 - HORN BLOWING RING					
7-7-12		Ring.....	201926	1	F47, K100, F485, K481
		Ring.....	203174	1	K101, K482
7-7-3		Screw with L/W, No. 10 - 24 x 3/4" Ov. Hd. Cr. Rec. ....	201974	2	All except F47C, F486
7-6-12		Ring.....	202474	1	F47C, F486
7-6-13		Screw, No. 10 - 32 x 1 13/32" Pan Hd. Sl. ....	202475	3	F47C, F486
7-6-6		Lockwasher, No. 10 Ext. Tooth.....	294	3	F47C, F486
7-6-18		Nut, No. 10 - 32 Hx. ....	202	3	F47C, F486
7-6-14		Washer, Insulating, 17/64" x 1/2" x 1/32".	202725	3	F47C, F486
7-6-15		Sleeve.....	202724	3	F47C, F486
7-6-16		Spring.....	202476	3	F47C, F486
7-6-17		Plate.....	202477	1	F47C, F486
7.534 - HORN BLOWING RING CONTACT PLATE					
7-7-8		Plate.....	202275	1	All except F47C, F486
7-7-5		Screw, No. 6 - 32 x 7/16" Pan Hd. Sl. ..	531	3	All except F47C, F486
7-7-6		Washer, Insulating.....	202250	3	All except F47C, F486
7-7-7		Insulator.....	201973	3	All except F47C, F486
7-7-9		Pad.....	201978	1	All except F47C, F486
7.536 - HORN BLOWING RING CABLE					
7-7-1		Cable.....	201975	1	All except F47C, F486
7-7-2		Retainer.....	202496	1	All except F47C, F486
7-7-11		Terminal.....	201214	1	All except F47C, F486
		Strap (to Dash Brace) (R.H.D.).....	203740	1	F485, K481
		Seal (at Lower End of Steering Column) (R.H.D.).....	203826	1	F485, K481
		Retainer.....	203827	1	F485, K481
7-6-9		Cable.....	202190	1	F47C, F486
7-6-8		Screw, No. 10 - 32 x 1/4" Fl. Hd. Sl. (Terminal).....	569	1	F47C, F486
7-6-6		Lockwasher, No. 10 Ext. Tooth.....	294	2	F47C, F486
7-6-5		Nut, No. 10 - 32 Hx. ....	570	2	F47C, F486
7-6-7		Sleeve.....	202478	1	F47C, F486
7-6-11		Terminal.....	201214	1	F47C, F486
7.538 - HORN WIRING HARNESS					
		Harness (Used with Straight Type Horn) up to Serial F485-1838, K100-46044.....	201757	1	F47, F485, K100

FIGURE NUMBER	GROUP	PART NAME and DESCRIPTION	PART NUMBER	QTY.	MODELS
7.538 - HORN WIRING HARNESS (CONT'D.)					
		Sleeve, 3/16" I.D. x 1".....	200997	1	F47, F485, K100
		Sleeve, 9/64" I.D. x 1".....	200998	1	F47, F485, K100
		Sleeve, 15/64" I.D. x 1".....	200999	1	F47, F485, K100
7.540 - HEADLIGHTS					
		Headlight, Right.....{up to Serial}.....	200804	1	F47, F485
		Headlight, Left.....{ F485-1838 }.....	200805	1	F47, F485
		Headlight, after Serial F485-1838.....	201522	2	All except F47
		Headlight (R.H.D.).....	203828	2	F485, K481
		Screw, No. 10 - 12 x 1/2" Bind. Hd. Tap.	277	10	All
		Lockwasher, No. 10 Ext. Tooth.....	294	10	All
7-8-10		Gasket (to Fender).....	200806	2	All
7-8-1		Door.....	200807	2	All
		Screw, No. 10 - 32 x 1/2" Oval Hd. ....	200808	2	All
7-8-3		Sealed Beam Unit.....	200810	2	All
		Sealed Beam Unit (R.H.D.).....	203829	2	F485, K481
7-8-5		Seat (incl. Screws).....	200811	2	All
7-8-14		Spring.....	200813	4	All
7-8-2		Retaining Ring.....	200812	2	All
		Screw, No. 8 - 32 x 3/8" Rd. Hd. Sl. ....	376	6	F47, F485, K100
7-8-4		Screw, No. 8 - 32 x 5/16" Fil. Hd. Sl. .	603	6	All
7-8-6		Screw, Beam Adjusting, 1/4" - 28 x 1 5/16"	200814	4	All
7-8-7		Nut, 1/4" - 28.....	200815	4	All
7.546 - HEADLIGHT CABLE					
		Cable, Right.....{up to Serial}.....	200816	1	F47, F485
		Cable, Left.....{ F485-1838 }.....	200817	1	F47, F485
		Terminal.....	201214	2	F47, F485
7-8-9		Cable, after Serial F485-1838.....	201524	2	All except F47
7-8-11		Sleeve.....	200998	4	All except F47
7-8-13		Connector.....	200862	2	All
		Terminal, Connector.....	200861	6	All
7-8-12		Screw, Ground.....	202722	2	All
		Grommet, Right and Left Splash Shield.....	200849	2	All
		Grommet, Left Shroud, up to Serial F485-1838, K100-46044.....	200850	1	F47, K100, F485
		Grommet, Right and Left Shroud, after Serial F485-1838, K100-46044.....	200499	1	All except F47
7.550 - HEADLIGHT CABLE TERMINAL BLOCK					
		Block, up to Serial F485-1838.....	201363	1	F47, F485
		Screw, No. 10 - 12 x 5/8" Bind. Hd. Tap.	345	2	F47, F485
		Block, after Serial F485-1838.....	201598	2	All except F47
		Screw, No. 10 - 12 x 3/8" Bind. Hd. Tap.	377	4	All except F47
		Lockwasher, No. 10 Med. ....	254	6	All except F47
		Nut, No. 10 - 32 Hx. ....	202	6	All except F47
7.552 - HEADLIGHT CABLE TERMINAL BLOCK HARNESS					
		Harness, up to Serial K100-46044.....	201597	1	K100
		Harness, after Serial K100-46044.....	202699	1	K100, K101, K481, K482



FIGURE NUMBER	GROUP	PART NAME and DESCRIPTION	PART NUMBER	QTY.	MODELS
7.552 - HEADLIGHT CABLE TERMINAL BLOCK HARNESS (CONT'D.)					
7-1-3		Harness (incl. Horn Cable) after Serial F485-1838.....	202729	1	F47C, K101, F485, F486, K482
		Sleeve, 9/64" x 1".....	200998	*	All
		Sleeve, 15/64" x 1".....	200999	*	All
		Sleeve, 9/64" x 1 1/2".....	201459	*	All
		Terminal.....	201214	*	All except K100, K481
		Terminal.....	201458	*	All except K100, K481
7.553 - HEADLIGHT SWITCH					
		Switch (R.H.D.).....	203830	1	F485, K481
		Nut.....	203625	1	F485, K481
		Nut, No. 10 - 32 Hx. (Terminal) (R.H.D.)..	202	2	F485, K481
		Lockwasher, No. 10 Int. Tooth.....	259	2	F485, K481
		Switch.....	200819	1	All
		Flatwasher, 7/16" x 11/16" x .010.....	200824	1	All
		Lockwasher, 7/16" Int. Tooth.....	305	1	All
		Nut, 7/16" - 28.....	200823	1	F47, F47C, F485, F486
		Nut, 7/16" - 28.....	201603	1	K100, K101, K481, K482
		Nut, No. 10 - 32 Hx. (Terminal).....	202	2	All
		Lockwasher, No. 10 Int. Tooth.....	259	2	All
		Fuse (30 Amp.).....	202899	1	All
		Cap, Fuse.....	202935	1	All
		Circuit Breaker (on Switch with Removable Type Circuit Breaker).....	202938	1	All
		Knob.....	200820	1	F47, F47C, F485, F486
		Knob.....	201604	1	K100, K101, K481, K482
		Set Screw, No. 8 - 32 x 1/8" Hx. Soc. Cup Pt. ....	306	1	All
		Knob (Plastic) (R.H.D.).....	203626	1	F485
		Knob (Chrome) (R.H.D.).....	203627	1	F485
		Knob (Plastic) (R.H.D.).....	203628	1	K481
7.554 - HEADLIGHT DIMMER SWITCH					
		Switch, up to Serial F485-1838.....	200863	1	F47, F485
		Switch, after Serial F485-1838.....	201605	1	All except F47
		Bolt, 1/4" - 20 x 3/8" Rd. Hd. Sl. ....	307	2	All
		Lockwasher, 1/4" Int. Tooth.....	275	2	All
		Screw, No. 8 - 32 x 1/4" Rd. Hd. Sl. (Terminal).....	310	3	All
		Lockwasher, No. 8.....	201356	3	All
		Grommet (thru Carpet).....	202086	1	F47C, K101, F486, K482
7.555 - HEADLIGHT BEAM INDICATOR JEWEL					
19-1-1		Jewel.....	201460	1	F47, F47C, F485, F486
		Retainer.....	201461	1	F47, F47C, F485, F486
7.556 - HEADLIGHT BEAM INDICATOR LIGHT SOCKET					
		Socket.....	200993	1	All
		Spring.....	200995	1	All

FIGURE NUMBER	GROUP	PART NAME and DESCRIPTION	PART NUMBER	QTY.	MODELS
7.556 - HEADLIGHT BEAM INDICATOR LIGHT SOCKET (CONT'D.)					
		Bushing.....	200994	1	All
		Terminal.....	200992	1	All
		Bulb, 6-8V, 1 C.P. ....	201462	1	All
7.560 - PARKING AND DIRECTIONAL LIGHT					
		Light, up to Serial F485-1838.....	200851	2	F47, F485
		Light.....	201525	2	K100, K481
		Nut, No. 10 - 24 Hx. ....	378	8	F47, K100, F485
		Light, after Serial F485-1838.....	202695	2	F47C, K101, F485, F486, K482
7-9-7		Lockwasher, No. 10 Int. Tooth.....	292	8	All except F47
7-9-6		Nut, No. 10 - 32 Hx. ....	202	8	All except F47
		Pad, Right.....	200852	1	All
7-9-1		Pad, Left.....	200853	1	All
7.563 - PARKING AND DIRECTIONAL LIGHT LENS					
7-9-12		Lens.....	200856	2	All
7-9-11		Gasket.....	200857	2	All
7-9-13		Bezel.....	200855	2	All
7-9-14		Screw, No. 8 - 32 x 3/8" Oval Hd. Cr. Rec. Pt. ....	312	4	All
7.564 - PARKING AND DIRECTIONAL LIGHT BULB					
7-9-10		Bulb, 6-8V, 2 1/3 C.P. ....	201361	2	All except K100, K481
7-9-16		Bulb, 6-8V, 3 C.P. ....	201600	2	K100, K481
7.568 - PARKING AND DIRECTIONAL LIGHT CABLE					
		Cable, up to Serial F485-1838.....	200858	2	F47, F485
		Terminal.....	201458	*	F47, F485
		Sleeve, 9/64" I.D. x 1 1/2".....	201459	*	F47, F485
7-9-15		Cable.....	201527	2	K100, K481
7-9-5		Cable, after Serial F485-1838.....	202723	2	All except K100, K481, F47
7-9-2		Terminal.....	201214	*	All except K100, K481, F47
7-9-9		Terminal.....	200992	*	All
7-9-3		Sleeve.....	200998	*	All except K100, F481, F47
7-9-8		Spring.....	200860	2	All
7-9-4		Boot.....	200859	2	All
7.570 - TAIL, STOP AND DIRECTIONAL LIGHT					
		Light, Right.....{up to Serial}	200833	1	F47, F485
		Light, Left.....{ F485-1838 }	200834	1	F47, F485
		Light, Right.....{after Serial}	202693	1	F47C, K101, F485, F486, K482
		Light, Left.....{ F485-1838 }	202694	1	F47C, K101, F485, F486, K482
		Light, Right.....	201528	1	K100, K481
		Light, Left.....	201529	1	K100, K481

\*As required

## ELECTRICAL

FIGURE NUMBER	GROUP	PART NAME and DESCRIPTION	PART NUMBER	QTY.	MODELS
7.570 - TAIL, STOP AND DIRECTIONAL LIGHT (CONT'D.)					
7-10-5		Lockwasher, No. 10 Int. Tooth.....	292	8	All
7-10-4		Nut, No. 10 - 32 Hx. ....	202	8	All
		Nut, No. 10 - 24 Hx. ....	378	8	F47, K100
7-10-1		Pad, Right.....	202009	1	All
		Pad, Left.....	200835	1	All
7.572 - TAIL, STOP AND DIRECTIONAL LIGHT LENS					
7-11-9		Lens, Right.....	200841	1	All except K100, K481
		Lens, Left.....	200842	1	All except K100, K481
7-10-10		Lens, Right.....	201530	1	K100, K481
		Lens, Left.....	201531	1	K100, K481
7-10-9		Gasket.....	200857	2	All
7-10-11		Bezel.....	200855	2	All
7-10-12		Screw, No. 8 - 32 x 3/8" Oval Hd. Cr. Rec. Pt. ....	312	4	All
7.574 - TAIL, STOP AND DIRECTIONAL LIGHT BULB					
7-10-8		Bulb, 6-8V,21/3 C.P. (Tail and Stop).....	201361	2	All
7-11-7		Bulb, 6-8V,21 C.P. (Directional).....	201360	2	All except K100, K481
7.576 - TAIL, STOP AND DIRECTIONAL LIGHT CABLE					
7-10-3		Cable, Tail Light, Right.....	201532	1	K100, K481
		Cable, Tail Light, Left.....	201533	1	K100, K481
		Cable, Tail Light, Right..	200844	1	F47, F485
		Cable, Tail Light, Left...	201820	1	F47, F485
		Cable, Directional Light, Right.....	200845	1	F47, F485
		Cable, Directional Light, Left.....	201821	1	F47, F485
7-11-4		Cable, Tail and Directional Light, Right	202728	1	F47C, K101, F485, F486, K482
		Cable, Tail Light, Left...	201533	1	F47C, K101, F485, F485, K482
7-1-16		Cable, Directional Light, Left.....	201821	1	F47C, K101, F485, F486, K482
7-10-7		Terminal.....	200992	*	All
7-11-2		Terminal.....	201214	*	All
7-10-2		Sleeve.....	200998	*	All
		Boot.....	200859	2	All
7-10-6		Spring.....	200860	2	All
7.578 - TAIL, STOP AND DIRECTIONAL LIGHT CABLE JUNCTION BLOCK					
		Block, after Serial F485-1838.....	201602	1	All except F47
		Screw, No. 10 - 12 x 3/8" Bind. Hd. Sl. Tap. ....	377	2	All except F47

\*As required

FIGURE NUMBER	GROUP	PART NAME and DESCRIPTION	PART NUMBER	QTY.	MODELS
7.578 - TAIL, STOP AND DIRECTIONAL LIGHT CABLE JUNCTION BLOCK (CONT'D.)					
		Lockwasher, No. 10 Med. ....	254	2	All except F47
		Nut, No. 10 - 32 Hx. ....	202	2	All except F47
7.620 - DIRECTIONAL SIGNAL LIGHT SWITCH					
		Switch (incl. Lever) up to Serial F485-1838.....	201467	1	F47, F485
		Switch (incl. Lever) (Prime) (R.H.D.)....	203848	1	F485
		Terminal.....	201214	2	F47, F485
		Switch (incl. Lever).....	202692	1	K101, F485, K482
		Screw, No. 10 - 32 x 5/16" Fil. Hd. Sl..	258	2	F47, K101, F485, K482
		Lockwasher, No. 10 Int. Tooth.....	259	2	F47, K101, F485, K482
		Screw, Cover, No. 8 - 32 x 7/8" Fil. Hd.			
		Cr. Rec. ....	586	2	F47, K101, F485, K482
		Screw, Unit, No. 8 - 32 x 3/8" Fil. Hd. Sl. ....	433	2	F47, K101, F485, K482
		Switch (incl. Lever) (Sandtone Beige)....	202325	1	F47C, F486
		Switch (incl. Lever) (Magenta Maroon)....	202791	1	F47C, F486
		Switch (incl. Lever) (Teal Blue).....	202792	1	F47C, F486
		Switch (incl. Lever) (Broadcast Blue)....	202793	1	F47C, F486
		Switch (incl. Lever) (Jasper Green).....	202794	1	F47C, F486
		Switch (incl. Lever) (Hickory Brown).....	202795	1	F47C, F486
		Switch (incl. Lever) (Wedgewood Blue)....	202796	1	F47C, F486
		Screw, No. 6 - 32 x 1/2" Rd. Hd. Sl. ...	404	4	F47C, F486
		Lockwasher, No. 6 Ext. Tooth.....	518	4	F47C, F486
7.626 - DIRECTIONAL SIGNAL LIGHT SWITCH LEVER					
		Lever (Ball Type).....	201864	1	F47
		Lever (Handle Type).....	201923	1	F47, K101, F485, K482
		Lockwasher, 1/4" Int. Tooth.....	275	1	F47, K101, F485, K482
		Nut, 1/4" - 20 Hx. ....	203	1	F47, K101, F485, K482
		Lever (Handle Type) (Sandtone Beige)....	202738	1	F47C, F486
		Lever (Handle Type) (Magenta Maroon)....	202797	1	F47C, F486
		Lever (Handle Type) (Teal Blue).....	202798	1	F47C, F486
		Lever (Handle Type) (Broadcast Blue)....	202799	1	F47C, F486
		Lever (Handle Type) (Jasper Green).....	202800	1	F47C, F486
		Lever (Handle Type) (Hickory Brown).....	202801	1	F47C, F486
		Lever (Handle Type) (Wedgewood Blue)....	202802	1	F47C, F486
		Lockwasher, 1/4" Med. ....	190	1	F47C, F486
		Nut, 1/4" - 20 Hx. ....	203	1	F47C, F486
7.630 - DIRECTIONAL SIGNAL LIGHT SWITCH CUT-OFF CAM					
		Cam (located on Steering Post).....	201399	1	F47, K101, F485, K482
		Set Screw, No. 10 - 32 x 1/8" Soc. Hd.			
		Cup Pt. ....	349	2	F47, K101, F485, K482
7.635 - DIRECTIONAL SIGNAL LIGHT FLASHER					
		Flasher.....	200986	1	All except K100, K481
		Screw, No. 10 - 32 x 1/2" Fil. Hd. Sl. .	432	1	All except K100, K481
		Flatwasher, No. 10 Sm. ....	248	2	All except K100, K481

FIGURE NUMBER	GROUP	PART NAME and DESCRIPTION	PART NUMBER	QTY.	MODELS
7.635 - DIRECTIONAL SIGNAL LIGHT FLASHER (CONT'D.)					
		Lockwasher, No. 10 Int. Tooth.....	259	1	All except K100, K481
		Nut, No. 10 - 32 Hx, .....	202	1	All except K100, K481
		Screw, No. 8 - 32 x 1/4" Rd. Hd. Sl. (Terminal).....	310	3	All except K100, K481
		Lockwasher.....	201356	3	All except K100, K481
		Flasher (R.H.D.).....	203831	1	F485
		Bracket (R.H.D.).....	203832	1	F485
		Screw, No. 10 - 12 x 3/8" Rd. Hd. Sl. Tap. ....	311	1	F485
		Connector (to Flasher) (R.H.D.).....	200862	1	F485
		Terminal.....	200861	*	F485
7.636 - DIRECTIONAL SIGNAL LIGHT FLASHER FUSE CABLE					
7-1-22		Cable (incl. Fuse Holder Body) up to Serial F485-1838.....	201507	1	F47, F485
		Cable (incl. Fuse Holder Cap) after Serial F485-1838.....	202696	1	All except K100, K481
		Sleeve, 9/64" I.D. x 1".....	200998	1	All except K100, K481
		Body, Fuse Holder.....	202136	1	All except K100, K481
		Spring, Fuse Holder Body.....	202135	1	All except K100, K481
		Cap, Fuse Holder.....	201608	1	All except K100, K481
		Washer.....	202134	1	All except K100, K481
		Bushing.....	201609	1	All except K100, K481
		Ferrule.....	201610	1	All except K100, K481
7-1-23		Fuse (9 Amp.).....	201508	1	All except K100, K481
		Clip (to Dash Brace).....	202735	1	All except K100, K481
7.637 - DIRECTIONAL INDICATOR LIGHT CABLE					
		Cable and Socket, Right..{up to Serial}... Cable and Socket, Left...{ F485-1838 }... Socket.....	201500	1	F47, F485
			201501	1	F47, F485
			200521	2	All except K100, K481
		Spring.....	200995	2	All except K100, K481
		Bushing.....	200994	2	All except K100, K481
		Terminal.....	200992	*	All except K100, K481
		Bulb, 6-8V, 1 C.P. S.C. ....	201462	2	All except K100, K481
7.638 - DIRECTIONAL INDICATOR FLASHER TO INDICATOR LIGHT CABLE					
7-1-13		Cable.....	201499	1	All except K100, K481
		Terminal.....	200996	1	All except K100, K481
		Terminal.....	201214	1	All except K100, K481
		Sleeve, 9/64" I.D. x 1".....	200998	1	All except K100, K481
7.640 - INSTRUMENT PANEL SWITCH					
19-1-43		Switch.....	202715	1	All
		Screw, No. 8 - 32 x 5/16" Rd. Hd. Sl. ..	251	2	All
		Lockwasher, No. 8 Int. Tooth.....	273	2	All
		Screw, No. 8 - 32 x 1/4" Rd. Hd. Sl. (Terminal).....	310	2	All
		Lockwasher, No. 8 Int. Tooth.....	273	2	All

FIGURE NUMBER	GROUP	PART NAME and DESCRIPTION	PART NUMBER	QTY.	MODELS
7.640 - INSTRUMENT PANEL SWITCH (CONT'D.)					
		Switch (R.H.D.).....	203833	1	F485, K481
		Nut.....	203625	1	F485, K481
		Screw, No. 8 - 32 x 1/4" Rd. Hd. Sl. (Terminal).....	310	2	F485, K481
		Lockwasher, No. 8.....	201356	2	F485, K481
		Knob (Plastic) (R.H.D.).....	203626	1	F485
		Knob (Chrome) (R.H.D.).....	203627	1	F485
		Knob (Plastic) (R.H.D.).....	203628	1	K481
7.641 - INSTRUMENT PANEL WIRING HARNESS					
		Harness, up to Serial F485-1838.....	201000	1	F47, F485
		Harness, up to Serial K100-46044.....	201607	1	K100
		Terminal.....	201214	1	F47, K100, F485
		Sleeve, 3/16" I.D. x 1".....	200997	*	F47, K100, F485
		Sleeve, 9/64" I.D. x 1".....	200998	*	F47, K100, F485
		Sleeve, 15/64" I.D. x 1".....	200999	*	F47, K100, F485
		Socket.....	200993	*	F47, K100, F485
		Spring.....	200995	*	F47, K100, F485
		Bushing.....	200994	*	F47, K100, F485
		Terminal.....	200992	*	F47, K100, F485
		Bulb, 6-8V, 2 C.P. S.C. ....	201502	*	F47, K100, F485
7.642 - INSTRUMENT PANEL CLUSTER LIGHT CABLE					
		Cable and Socket, up to Serial F485-1838..	201429	1	F47, F485
		Terminal.....	200992	*	F47, F485
		Socket.....	200993	*	All
		Spring.....	200995	*	All
		Bushing.....	200994	*	All
		Bulb, 6-8V, 2 C.P. ....	201502	*	All
7.643 - INSTRUMENT PANEL WIRING JUNCTION BLOCK					
		Block (on Left Cowl) up to Serial F485- 1838.....	201497	1	F47, F485
		Screw, No. 8 - 18 x 1/2" Rd. Hd. Sl. Tap. ....	314	2	F47, F485
		Flatwasher, No. 8 Sm. ....	315	2	F47, F485
		Block (on Left Cowl) after Serial F485- 1838.....	201602	1	F47C, K101, F485, F486, K482
		Screw, No. 10 - 12 x 3/8" Bind. Hd. Sl..	377	2	F47C, K101, F485, F486, K482
		Screw, No. 10 - 16 x 3/8" Rd. Hd. Cr. Rec. Tap. (R.H.D.).....	532	2	F485
		Lockwasher, No. 10 Med. ....	254	2	F47C, K101, F485, F486, K482
		Nut, No. 10 - 32 Hx. ....	202	2	F47C, K101, F485, F486, K482
		Bracket (R.H.D.).....	203834	1	F485
		Screw, No. 10 - 32 x 3/8" Rd. Hd. Sl....	283	1	F485
		Lockwasher, No. 10 Ext. Tooth.....	294	1	F485
		Nut, No. 10 - 32 Hx. ....	202	1	F485

\*As required

FIGURE NUMBER	GROUP	PART NAME and DESCRIPTION	PART NUMBER	QTY.	MODELS
7.644 - COURTESY (OR MAP) LIGHT SWITCH					
		Switch (in Door Pillar).....	200831	2	F47C, F486
		Screw, No. 6 - 18 x 3/8" Fil. Hd. Cr.			
		Rec. ....	510	4	F47C, F486
19-1-29		Switch (on Inst. Board Control Panel)....	200821	1	F47C, F486
		Screw, No. 8 - 32 x 1 1/4" Pan Hd. Cr.			
		Rec. ....	600	2	F47C, F486
		Lockwasher, No. 8 Int. Tooth.....	273	2	F47C, F486
		Screw, No. 8 - 32 x 1/4" Rd. Hd. Sl.			
		(Terminal).....	310	2	F47C, F486
		Lockwasher, No. 8 Int. Tooth.....	273	2	F47C, F486
		Switch (on Inst. Board) (R.H.D.).....	203662	1	F485, K481
		Nut.....	203625	2	F485, K481
		Screw, No. 8 - 32 x 1/4" Rd. Hd. Sl. ....	310	2	F485, K481
		Lockwasher, No. 8.....	201356	2	F485, K481
		Knob (Plastic) (R.H.D.).....	203626	1	F485
		Knob (Chrome) (R.H.D.).....	203627	1	F485
		Knob (Plastic) (R.H.D.).....	203628	1	K481
7.646 - COURTESY (OR MAP) LIGHT LENS AND BEZEL					
		Lens and Bezel.....	202657	2	F485, F486, K481
		Bulb, 6-8V, 6 C.P. S.C. ....	202658	2	F485, F486, K481
7.648 - COURTESY (OR MAP) LIGHT WIRING HARNESS					
7-1-20		Harness (incl. Sockets).....	202659	1	F486
		Socket.....	203835	2	F485, F486, K481
		Terminal.....	201214	*	F485, F486, K481
		Terminal.....	200996	*	F485, F486, K481
		Sleeve, 9/64" I.D. x 1".....	200998	*	F485, F486, K481
		Sleeve, 3/16" I.D. x 1".....	200997	*	F485, F486, K481
		Sleeve, 15/64" I.D. x 1".....	200999	*	F485, F486, K481
7.650 - STOP LIGHT SWITCH					
		Switch.....	201466	1	All
7.652 - CIGAR LIGHTER					
19-1-23		Lighter.....	201503	1	All
		Lighter (Plastic Knob) (R.H.D.).....	203836	1	F485
		Lighter (Chrome Knob) (R.H.D.).....	203837	1	F485
		Lighter (Plastic Knob) (R.H.D.).....	203838	1	K481
		Lockwasher, No. 8 Int. Tooth.....	273	1	All
		Nut, No. 8 - 32 Hx. ....	272	1	All
		Base and Clamp.....	201504	1	All
		Base and Clamp (R.H.D.).....	203839	1	F485, K481
		Clamp.....	201506	1	All
		Clamp (R.H.D.).....	203840	1	F485, K481
		Knob and Element.....	201505	1	All
		Knob and Element (Plastic) (R.H.D.).....	203737	1	F485
		Knob and Element (Chrome) (R.H.D.).....	203738	1	F485
		Knob and Element (Plastic) (R.H.D.).....	203841	1	K481
		Element.....	202042	1	All

\*As required

FIGURE NUMBER	GROUP	PART NAME and DESCRIPTION	PART NUMBER	QTY.	MODELS
7.700 - CHASSIS WIRING HARNESS					
		Harness, up to Serial F485-1838.....	200987	1	F47, F485
		Harness, up to Serial K100-46044.....	201606	1	K100
		Clip (on Dash Panel).....	200991	1	F47, K100, F485
		Screw, No. 10 - 12 x 3/8" Rd. Hd. Sl.			
		Tap. ....	311	1	F47, K100, F485
		Connector.....	201380	1	F47
7-1-21		Harness, after Serial F485-1838.....	202697	1	F47C, F485, F486
		Harness.....	203173	1	K101, K482
		Harness, after Serial K100-46044.....	202698	1	K100, K481
		Harness, (R.H.D.).....	203842	1	F485
		Harness, (R.H.D.).....	203843	1	K481
		Clip (on Dash Panel).....	202736	1	All except F47
		Screw, No. 10 - 32 x 3/8" Rd. Hd. Sl. ..	419	1	All except F47
		Lockwasher, No. 10 Ext. Tooth.....	294	1	All except F47
		Nut, No. 10 - 32 Hx. ....	202	1	All except F47
		Terminal.....	201214	*	All
		Terminal.....	201458	*	All
		Terminal.....	200996	*	All
		Terminal.....	200992	*	All
		Sleeve, 3/16" I.D. x 1".....	200997	*	All
		Sleeve, 9/64" I.D. x 1".....	200998	*	All
		Sleeve, 15/64" I.D. x 1".....	200999	*	All
		Sleeve, 9/64" I.D. x 1 1/2".....	201459	*	All
		Grommet.....	200989	1	All
		Retainer.....	200510	2	All
		Screw, No. 10 - 12 x 3/8" Rd. Hd. Sl.			
		Tap. ....	311	2	All
7.800 - OVERDRIVE SOLENOID					
9-2-30		Solenoid.....	200911	1	F47, F47C, F485, F486
		Bolt, 5/16" - 18 x 5/8" Hx. Hd. ....	208	2	F47, F47C, F485, F486
		Lockwasher, 5/16" Ext. Tooth.....	348	2	F47, F47C, F485, F486
9-2-29		Oil Seal.....	200914	1	F47, F47C, F485, F486
		Shield.....	202102	1	F47
		Grommet.....	202103	1	F47
7.802 - OVERDRIVE RAIL SWITCH					
9-2-53		Switch.....	200915	1	F47, F47C, F485, F486
		Screw, No. 10 - 24 x 1/2" Rd. Hd. Sl. ..	293	2	F47, F47C, F485, F486
		Lockwasher, No. 10.....	254	2	F47, F47C, F485, F486
9-2-54		Gasket.....	200918	1	F47, F47C, F485, F486
7.804 - OVERDRIVE SOLENOID RELAY					
		Relay.....	201636	1	F47, F47C, F485, F486
		Screw, No. 14 - 10 x 1/2" Rd. Hd. Sl.			
		Tap. ....	383	2	F47, F47C, F485, F486
		Screw, No. 10 - 32 x 1/4" Rd. Hd. Sl.			
		(Terminal).....	334	4	F47, F47C, F485, F486
		Lockwasher, No. 10 Ext. Tooth.....	294	4	F47, F47C, F485, F486
		Fuse (20 Amp.).....	201818	1	F47, F47C, F485, F486
		Holder.....	201819	1	F47, F47C, F485, F486

\*As required



## ELECTRICAL

FIGURE NUMBER	GROUP	PART NAME and DESCRIPTION	PART NUMBER	QTY.	MODELS
<b>7.806 - OVERDRIVE KICKDOWN SWITCH</b>					
		Switch.....	201638	1	F47, F47C, F485, F486
		Lockwasher, 9/16" Ext. Tooth.....	380	1	F47, F47C, F485, F486
		Nut, 9/16" - 18 Hx. ....	201885	2	F47, F47C, F485, F486
		Switch (R.H.D. and Dual Manifold).....	203451	1	F485, F486
		Lockwasher, 7/16" Ext. Tooth.....	637	2	F485, F486
		Nut, 7/16" - 20 Hx. ....	203387	2	F485, F486
		Screw, No. 8 - 32 x 1/4" Rd. Hd. Sl. (Terminal).....	310	4	F47, F47C, F485, F486
		Lockwasher, No. 8.....	201356	4	F47, F47C, F485, F486
		Bracket, up to Serial F47-9514.....	201635	1	F47
		Screw, No. 12 - 11 x 1/2" Rd. Hd. Sl. Tap. ....	382	2	F47
		Bracket (R.H.D.).....	203844	1	F485
		Bolt, 1/4" - 20 x 1/2" Hx. Hd. ....	179	2	F485
		Lockwasher, 1/4".....	370	2	F485
		Nut, 1/4" - 20 Hx. ....	203	2	F485
		Bracket (Dual Manifold).....	203452	1	F486
		Bolt, 1/4" - 20 x 5/8" Hx. Hd. ....	257	1	F486
		Lockwasher, 1/4".....	370	1	F486
		Nut, 1/4" - 20 Hx. ....	203	1	F486
<b>7.810 - OVERDRIVE SOLENOID TO GOVERNOR CABLE</b>					
7-1-18		Cable.....	201615	1	F47, F47C, F485, F486
		Terminal.....	201214	1	F47, F47C, F485, F486
		Sleeve, 9/64" I.D. x 1".....	200998	1	F47, F47C, F485, F486
<b>7.812 - OVERDRIVE WIRING HARNESS</b>					
7-1-19		Harness.....	201612	1	F47, F47C, F485, F486
		Harness (R.H.D.).....	203845	1	F485
		Harness (Dual Manifold).....	203536	1	F486
		Clip (on Transmission).....	201758	1	F47, F47C, F485, F486
		Clip (to Speedometer Cable).....	203018	1	F47, F47C, F485, F486
		Clip (on Dash).....	201614	1	F47, F47C, F485, F486
		Clip (on Dash) (R.H.D.).....	203846	2	F485
		Screw, No. 10 - 12 x 3/8" Rd. Hd. Sl. Tap. ....	311	1	F47, F47C, F485, F486
		Sleeve, 3/16" I.D. x 1".....	200997	*	F47, F47C, F485, F486
		Sleeve, 9/64" I.D. x 1".....	200998	*	F47, F47C, F485, F486

# NOTES