

FIGURE 9-1—TYPICAL TRANSMISSION - EXPLODED VIEW

FIGURE 9-1—TYPICAL TRANSMISSION - EXPLODED VIEW

Key	Part Name	Group	Key	Part Name	Group
1	Cover, Case.....	9.007	33	Gasket, Drive Pinion Bearing Retainer.....	9.117
2	Gasket, Case Cover.....	9.007	34	Bearing, Main Shaft.....	9.140
3	Gear, Sliding - Low and Reverse.....	9.135	35	Snap Ring, Main Shaft Bearing.....	9.140
4	Gear, Sliding - Second Speed Idler.....	9.135	36	Gasket, Main Shaft Bearing Retainer.....	9.145
5	Blocking Ring, Second and High Synchronizer Sleeve.....	9.130	37	Retainer, Main Shaft Bearing.....	9.145
6	Snap Ring, Second and High Synchronizer Hub.....	9.130	38	Lockwasher.....	9.145
7	Hub, Second and High Synchronizer.....	9.125	39	Bolt.....	9.145
8	Plate, Second and High Synchronizer Sleeve.....	9.130	40	Gear, Speedometer Drive.....	9.286
9	Sleeve, Second and High Synchronizer.....	9.130	41	Flange, Propeller Shaft Companion - Front (Universal)	11.004
10	Snap Ring, Second and High Synchronizer.....	9.125	42	Oil Seal, Main Shaft.....	9.145
11	Bearing, Main Shaft Roller.....	9.120	43	Flange, Propeller Shaft Companion - Front (Mechanics)	11.004
12	Shaft, Transmission Main.....	9.120	44	Flatwasher.....	11.004
13	Gear Cluster, Countershaft.....	9.155	45	Lockwasher.....	11.004
14	Thrustwasher, Countershaft Gear Cluster - Front.....	9.155	46	Nut.....	11.004
15	Thrustwasher, Countershaft Gear Cluster - Rear.....	9.155	47	Shoe, Shifting - Low and Reverse.....	9.185
16	Thrustwasher, Countershaft Gear Cluster - Rear.....	9.155	48	Lever and Shaft, Shifting - Inner - Low and Reverse..	9.180
17	Washer, Countershaft Gear Bearing.....	9.160	49	Spring, Shifting Lever Poppet Ball.....	9.190
18	Spacer, Countershaft Gear Bearing.....	9.160	50	Pin, Shifting Lever Poppet Ball.....	9.190
19	Bearing, Countershaft Gear - Roller.....	9.160	51	Lockwasher.....	9.195
20	Synchronizer Unit, Second and High.....	9.125	52	Nut.....	9.195
21	Countershaft.....	9.165	53	Lever Ass'y., Shifting - Outer - Low and Reverse.....	9.195
22	Shaft, Reverse Idler Gear.....	9.175	54	Insulator, Shifting Lever - Outer.....	9.195
23	Lockplate, Reverse Idler Gear Shaft.....	9.175	55	Lever Ass'y., Shifting - Outer - Second and High.....	9.195
24	Bushing, Reverse Idler Gear.....	9.170	56	Oil Seal, Shifting Lever - Inner.....	9.180
25	Gear Ass'y., Reverse Idler.....	9.170	57	Lever and Shaft - Second and High.....	9.180
26	Case Ass'y.	9.005	58	Fork, Shifting - Second and High.....	9.185
27	Retainer, Drive Pinion Bearing.....	9.115	59	Pin.....	9.180
28	Snap Ring, Drive Pinion Bearing.....	9.110	60	Ball, Shifting Lever Poppet.....	9.190
29	Snap Ring, Drive Pinion Bearing.....	9.110	61	Sleeve, Shifting Lever Poppet Ball.....	9.190
30	Bearing, Drive Pinion.....	9.105	62	Plug, Filler and Drain.....	9.005
31	Slinger, Drive Pinion Bearing.....	9.105	63	Plug, Taper.....	9.005
32	Pinion Ass'y., Drive.....	9.100	64	Flatwasher.....	9.195

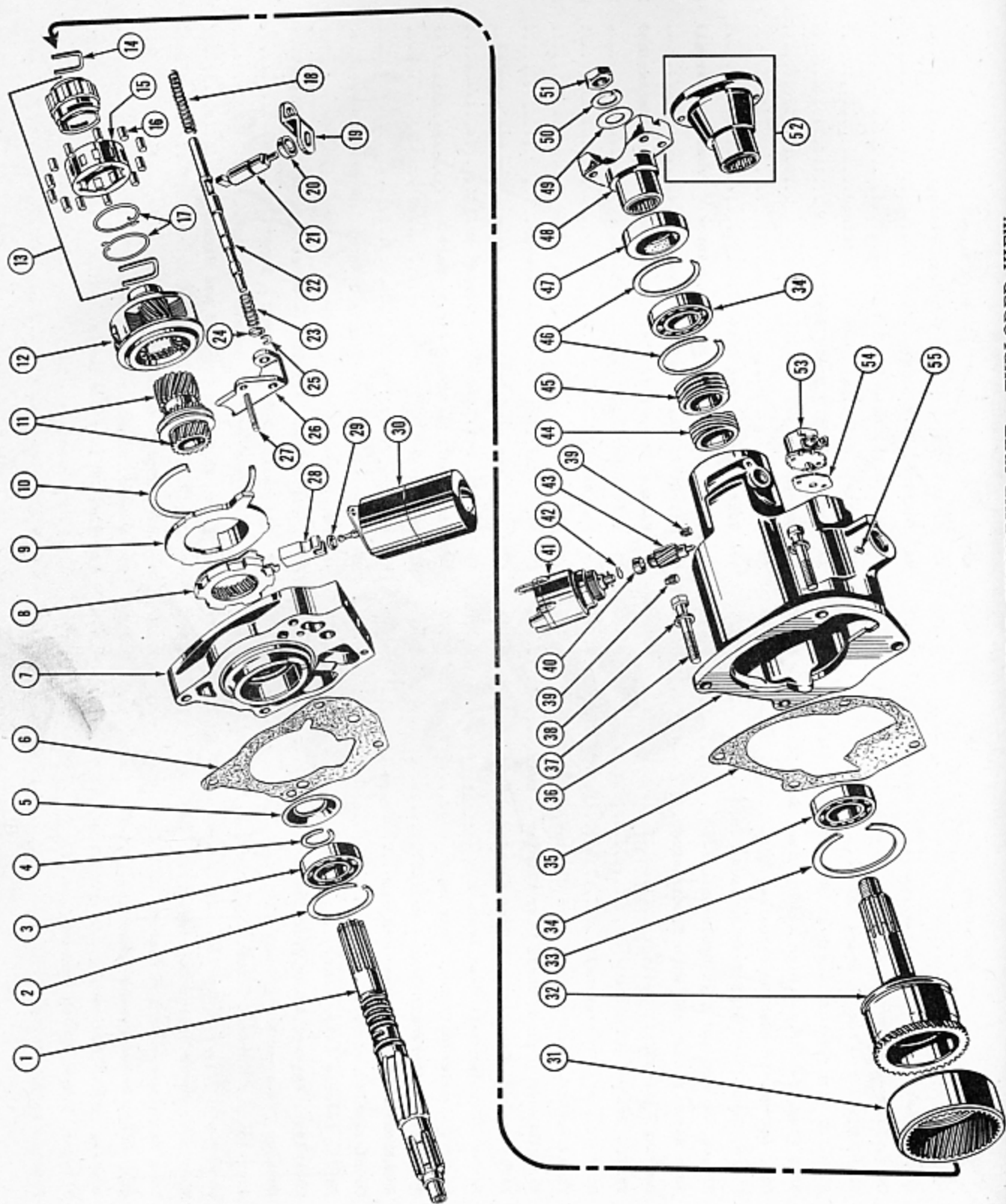


FIGURE 9-2 TYPICAL OVERDRIVE UNIT - EXPLODED VIEW

FIGURE 9-2—TYPICAL OVERDRIVE UNIT - EXPLODED VIEW

Key	Part Name	Group	Key	Part Name	Group
1	Shaft, Overdrive Transmission.....	9.120	29	Oil Seal, Solenoid.....	7.800
2	Snap Ring, Main Shaft Bearing.....	9.140	30	Solenoid.....	7.800
3	Bearing, Main Shaft.....	9.140	31	Ring Gear.....	9.245
4	Snap Ring, Main Shaft Bearing.....	9.140	32	Mainshaft.....	9.235
5	Baffle, Main Shaft Bearing.....	9.140	33	Snap Ring, Ring Gear.....	9.245
6	Gasket, Overdrive Adapter to Housing.....	9.145	34	Bearing, Mainshaft.....	9.240
7	Adapter, Overdrive Housing.....	9.145	35	Gasket, Housing.....	9.200
8	Gear and Plate - Stationary.....	9.205	36	Housing.....	9.200
9	Plate, Stationary Gear Cover.....	9.215	37	Bolt.....	9.200
10	Snap Ring, Stationary Gear Cover Plate.....	9.215	38	Lockwasher.....	9.200
11	Gear, Stationary.....	9.210	39	Plug, Filler and Drain.....	9.200
12	Cage Ass'y., Stationary Gear Pinion.....	9.220	40	Sleeve, Governor Pinion.....	9.265
13	Cam, Free Wheeling.....	9.225	41	Governor.....	9.265
14	Clip, Free Wheeling Cam.....	9.225	42	Retainer, Governor Pinion Sleeve.....	9.265
15	Retainer, Free Wheeling Cam Bearing.....	9.230	43	Pinion, Governor.....	9.265
16	Bearing, Free Wheeling Cam - Roller.....	9.230	44	Gear, Governor.....	9.265
17	Spring, Free Wheeling Cam Bearing Retainer.....	9.230	45	Gear, Speedometer Drive.....	9.286
18	Spring, Shift Control Shaft - Retractor.....	9.255	46	Snap Ring, Mainshaft Bearing.....	9.240
19	Lever, Control Shaft.....	9.260	47	Oil Seal, Mainshaft.....	9.235
20	Oil Seal, Shift Control Shaft.....	9.255	48	Flange, Propeller Shaft Companion - Front (Mechanics)	11.004
21	Shaft, Shift Control.....	9.255	49	Flatwasher.....	11.004
22	Rail, Overdrive Shift Fork.....	9.250	50	Lockwasher.....	11.004
23	Spring, Shift Control Shaft - Lock Up.....	9.255	51	Nut.....	11.004
24	Cup, Shift Control Shaft Lock Up Spring.....	9.250	52	Flange, Propeller Shaft Companion - Front (Universal)	11.004
25	"C" Washer, Shift Fork.....	9.250	53	Switch, Shift Fork Rail.....	7.800
26	Fork, Shift.....	9.250	54	Gasket, Shift Fork Rail Switch.....	7.800
27	Guide, Shift Fork.....	9.250	55	Pin, Shift Control Shaft.....	9.255
28	Pawl, Stationary Gear.....	9.210			

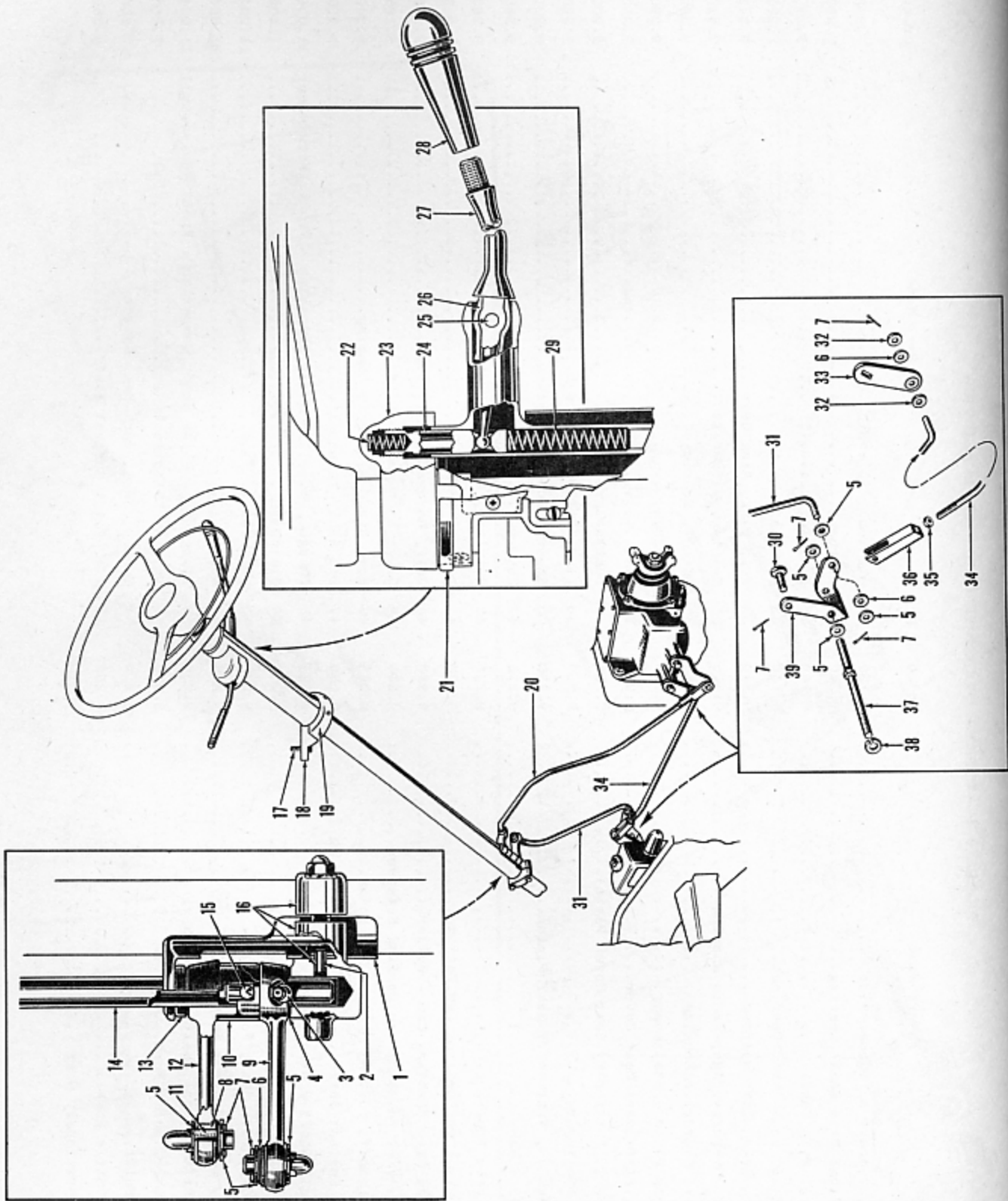


FIGURE 9-3—TYPICAL TRANSMISSION GEAR SHIFT CONTROL - CROSS SECTIONAL AND EXPLODED VIEW

FIGURE 9-3—TYPICAL TRANSMISSION GEAR SHIFT CONTROL - CROSS SECTIONAL AND EXPLODED VIEW

Key	Part Name	Group	Key	Part Name	Group
1	Retainer, Lower Lever.....	9.330	21	Seal, Steering Gear Jacket Cover - Upper...	14.122
2	Dowel Pin, Gear Shift Tube Bracket - Lower	9.335	22	Spring, Gear Shift Lever Guide - Upper.....	9.305
3	Oiler, Lower Lever.....	9.325	23	Bracket, Gear Shift Tube - Upper.....	9.315
4	Spring Washer, Lower Lever.....	9.330	24	Guide, Gear Shift Lever.....	9.305
5	Flatwasher.....	9.340	25	Pin, Gear Shift Lever.....	9.300
6	Spring Washer.....	9.340	26	Sleeve, Gear Shift Lever.....	9.300
7	Cotter Pin.....	9.340	27	Lever, Transmission Gear Shift - Upper.....	9.300
8	Insulator, Lower Lever.....	9.320	28	Knob, Gear Shift Lever.....	9.300
9	Lever, Gear Shift Lower - Second and High.	9.325	29	Spring, Gear Shift Lever Guide - Lower.....	9.305
10	Cover.....	9.325	30	Pin, Clevis.....	9.343
11	Sleeve, Gear Shift Rod.....	9.340	31	Rod, Gear Shift Upper - Second and High...	9.340
12	Lever, Gear Shift Lower - Low and Reverse.	9.320	32	Flatwasher.....	9.343
13	Retainer, Lower Lever Seal.....	9.320	33	Lever.....	9.195
14	Tube, Gear Shift.....	9.310	34	Rod, Gear Shift Lower - Second and High...	9.343
15	Pin, Gear Shift Tube.....	9.310	35	Locknut.....	9.343
16	Bracket Ass'y., Gear Shift Tube - Lower...	9.335	36	Clevis, Gear Shift Rod - Lower.....	9.343
17	Bolt.....	14.120	37	Stud, Gear Shift Rod Bellcrank.....	9.341
18	Bracket, Steering Gear Support.....	14.120	38	Lockwasher.....	9.341
19	Cap, Steering Gear Support Bracket.....	14.120	39	Bellcrank, Gear Shift Rod.....	9.341
20	Rod, Gear Shift - Low and Reverse.....	9.340			

TRANSMISSION

FIGURE NUMBER	GROUP	PART NAME and DESCRIPTION	PART NUMBER	QTY.	MODELS
9.000 - TRANSMISSION					
NOTE: The Companion Flange must be checked and changed to fit the Propeller Shaft used.					
		Transmission, St'd.3.73 Ratio.....	202316	1	All except F47C, F486
		Transmission, St'd.4.09 Ratio.....	201266	1	All except F47C, F486
		Transmission, Overdrive....4.27 Ratio.....	201267	1	F47, F47C, F485, F486
		Bolt, 7/16" - 14 x 1 1/4" Hx. Hd.	265	4	All
		Lockwasher, 7/16".....	193	4	All
9.005 - TRANSMISSION CASE					
9-1-26		Case, St'd.(incl. Plug).....	201268	1	All except F47C, F486
		Case, Overdrive.....(incl. Plug).....	201269	1	F47, F47C, F485, F486
9-1-62		Plug, Filler and Drain.....	201270	2	All
9-1-63		Plug, Taper.....	201271	1	All
9.007 - TRANSMISSION CASE COVER					
9-1-1		Cover.....	201272	1	All
		Bolt, 5/16" - 18 x 5/8" Hx. Hd.	208	6	All
		Lockwasher, 5/16" Med.	240	6	All
9-1-2		Gasket.....	201275	1	All
9.100 - TRANSMISSION DRIVE PINION					
9-1-32		Pinion (incl. Bearing).....	201273	1	All
		Bushing (in Crankshaft).....	200064	1	All
9.105 - TRANSMISSION DRIVE PINION BEARING					
9-1-30		Bearing.....	201274	1	All
9-1-31		Slinger.....	201287	1	All
9.110 - TRANSMISSION DRIVE PINION BEARING SNAP RING					
9-1-29		Snap Ring, .0625 Thick, 2 11/16" I.D.	201286	1	All
9-1-28		Snap Ring, .086 Thick, 1 15/64" I.D.	201282	*	All
9-1-28		Snap Ring, .089 Thick, 1 15/64" I.D.	201283	*	All
9-1-28		Snap Ring, .092 Thick, 1 15/64" I.D.	201284	*	All
9-1-28		Snap Ring, .095 Thick, 1 15/64" I.D.	201285	*	All
9.115 - TRANSMISSION DRIVE PINION BEARING RETAINER					
9-1-27		Retainer.....	201276	1	All
		Bolt.....	201277	3	All
		Lockwasher, 5/16" Med.	240	3	All
9.117 - TRANSMISSION DRIVE PINION BEARING RETAINER GASKET					
9-1-33		Gasket, .009.....	201278	*	All
9-1-33		Gasket, .0135.....	201279	*	All
9-1-33		Gasket, .018.....	201280	*	All
9-1-33		Gasket, .025.....	201281	*	All

*As required

TRANSMISSION

FIGURE NUMBER	GROUP	PART NAME and DESCRIPTION	PART NUMBER	QTY.	MODELS
9.120 - TRANSMISSION MAIN SHAFT					
9-1-12		Shaft, St'd. Trans. (incl. Synchronizer Unit, Second speed idler, Low and Reverse Gear).....	201288	1	All except F47C, F486
9-2-1		Shaft, Overdrive Trans. (incl. Synchronizer Unit, Second Speed Idler, Low and Reverse Gear).....	201289	1	F47, F47C, F485, F486
9-1-11		Shaft, St'd. Trans.	201290	1	All except F47C, F486
		Bearing, Roller.....	201292	14	All
9.125 - TRANSMISSION SECOND AND HIGH SYNCHRONIZER					
9-1-20		Synchronizer Unit (incl. Hub, Sleeve, Shifting Plate and Snap Rings).....	201293	1	All
9-1-7		Hub.....	201294	1	All
9-1-10		Snap Ring.....	201282	1	All
9.130 - TRANSMISSION SECOND AND HIGH SYNCHRONIZER SLEEVE					
9-1-9		Sleeve.....	201295	1	All
9-1-8		Plate, Shifting.....	201296	3	All
9-1-6		Snap Ring.....	201297	2	All
9-1-5		Blocking Ring.....	201298	2	All
9.135 - TRANSMISSION SLIDING GEAR					
9-1-4		Gear, Second Speed Idler (incl. Bushing)..	201299	1	All
9-1-3		Gear, Low and Reverse.....	201300	1	All
9.140 - TRANSMISSION MAIN SHAFT					
9-1-34		Bearing.....	201301	1	All
9-1-35		Snap Ring, .086 Thick, 2 31/32" O.D. ...	201302	*	All
9-1-35		Snap Ring, .089 Thick, 2 31/32" O.D. ...	201303	*	All
9-1-35		Snap Ring, .092 Thick, 2 31/32" O.D. ...	201304	*	All
9-1-35		Snap Ring, .095 Thick, 2 31/32" O.D. ...	201305	*	All
9-2-2		Snap Ring, .086 Thick, 1 15/64" I.D.	} Overdrive Trans. }	201282 * F47, F47C, F485, F486
9-2-2		Snap Ring, .089 Thick, 1 15/64" I.D.			
9-2-2		Snap Ring, .092 Thick, 1 15/64" I.D.			
9-2-2		Snap Ring, .095 Thick, 1 15/64" I.D.			
9-2-5		Baffle.....			
			201283	*	F47, F47C, F485, F486
			201284	*	F47, F47C, F485, F486
			201285	*	F47, F47C, F485, F486
			201306	1	F47, F47C, F485, F486
9.145 - TRANSMISSION MAIN SHAFT BEARING RETAINER AND ADAPTER					
9-1-37		Retainer, St'd. Trans.	201307	1	All except F47C, F486
9-1-39		Bolt, 3/8" - 16 x 7/8" Hx. Hd.	268	2	All except F47C, F486
9-1-39		Bolt, 3/8" - 16 x 1" Hx. Hd.	181	2	All except F47C, F486
9-1-38		Lockwasher, 3/8" Med.	192	4	All except F47C, F486
9-1-36		Gasket, St'd. Trans.	201309	1	All except F47C, F486
9-1-42		Oil Seal, St'd. Trans.	201311	1	All except F47C, F486

*As required

TRANSMISSION

FIGURE NUMBER	GROUP	PART NAME and DESCRIPTION	PART NUMBER	QTY.	MODELS
9.145 - TRANSMISSION MAIN SHAFT BEARING RETAINER AND ADAPTER (CONT'D.)					
9-2-7		Adapter, Overdrive Housing.....	201308	1	F47, F47C, F485, F486
9-2-6		Gasket, Overdrive Housing to Adapter.....	200895	1	F47, F47C, F485, F486
9.155 - TRANSMISSION COUNTERSHAFT GEAR CLUSTER					
9-1-13		Gear Cluster.....	201313	1	All
9-1-14		Thrustwasher, Front.....	201314	1	All
9-1-15		Thrustwasher, Rear, 1 15/16" O.D.	201315	1	All
9-1-16		Thrustwasher, Rear, 1 29/32" O.D.	201316	1	All
9.160 - TRANSMISSION COUNTERSHAFT GEAR BEARINGS					
9-1-19		Bearing (Roller).....	201317	44	All
9-1-18		Spacer.....	201318	1	All
9-1-17		Washer.....	201319	2	All
9.165 - TRANSMISSION COUNTERSHAFT					
9-1-21		Countershaft.....	201312	1	All
9.170 - TRANSMISSION REVERSE IDLER GEAR					
9-1-25		Gear (incl. Bushing).....	201320	1	All
9-1-24		Bushing.....	201321	1	All
9.175 - TRANSMISSION REVERSE IDLER GEAR SHAFT					
9-1-22		Shaft.....	201322	1	All
9-1-23		Lockplate.....	201323	1	All
9.180 - TRANSMISSION SHIFTING LEVER - INNER					
9-1-57		Lever and Shaft, Second and High.....	201328	1	All
9-1-48		Lever and Shaft, Low and Reverse.....	202716	1	All
9-1-59		Pin.....	201327	2	All
9-1-56		Oil Seal.....	200903	2	All
9.185 - TRANSMISSION SHIFTING FORK AND SHOE					
9-1-58		Fork, Second and High.....	201325	1	All
9-1-47		Shoe, Low and Reverse.....	201324	1	All
9.190 - TRANSMISSION SHIFTING LEVER POPPET BALL					
9-1-60		Ball.....	201329	2	All
9-1-49		Spring.....	201330	1	All
9-1-50		Pin.....	203076	1	All
9-1-61		Sleeve (not marked) 1.299 Long.....	201331	*	All
9-1-61		Sleeve (marked "A") 1.295 Long.....	201332	*	All
9-1-61		Sleeve (marked "B") 1.291 Long.....	201333	*	All
9-1-61		Sleeve (marked "C") 1.287 Long.....	201334	*	All

*As required

TRANSMISSION

9

FIGURE NUMBER	GROUP	PART NAME and DESCRIPTION	PART NUMBER	QTY.	MODELS
9.190 - TRANSMISSION SHIFTING LEVER POPPET BALL (CONT'D.)					
9-1-61		Sleeve (marked "D") 1.303 Long.....	201335	* All	
9.195 - TRANSMISSION SHIFTING LEVER - OUTER					
		Lever, Second and High (incl. Insulator) up to Serial F47-6111, K100-10719.....	201338	1	F47, K100
9-1-55		Lever, Second and High (incl. Insulator) after Serial F47-6111, K100-10719.....	202317	1	All
9-1-53		Lever, Low and Reverse (incl. Insulator).. Lever, Low and Reverse (incl. Insulator) (R.H.D.).....	201337	1	All
		Lever, Second and High (incl. Insulator) (R.H.D.).....	203509	1	F485, K481
9-1-64		Flatwasher.....	203510	1	F485, K481
9-1-51		Lockwasher, 5/16" Med.	201339	2	All
9-1-52		Nut, 5/16" - 18 Hx. Lt.	240	2	All
9-1-54		Insulator.....	205	2	All
			201340	2	All
9.200 - TRANSMISSION OVERDRIVE HOUSING					
9-2-36		Housing.....	200865	1	F47, F47C, F485, F486
9-2-37		Bolt.....	200866	4	F47, F47C, F485, F486
9-2-38		Lockwasher, 7/16" Med.	193	4	F47, F47C, F485, F486
9-2-35		Gasket.....	201310	1	F47, F47C, F485, F486
9-2-39		Plug, Filler and Drain, 3/8" Sq. Hd. Pipe.	121	2	F47, F47C, F485, F486
NOTE: For Trans. Main Shaft Bearing Retainer and Adapter see Group 9.145					
9.205 - TRANSMISSION OVERDRIVE GEAR AND PLATE - STATIONARY					
9-2-8		Gear and Plate.....	200870	1	F47, F47C, F485, F486
		Blocking Ring.....	200876	1	F47, F47C, F485, F486
9.210 - TRANSMISSION OVERDRIVE STATIONARY GEAR					
9-2-11		Gear (incl. Shifting Collar and Snap Rings).....	200871	1	F47, F47C, F485, F486
		Snap Ring, 1 15/32" I.D.	200872	2	F47, F47C, F485, F486
		Gear.....	200873	1	F47, F47C, F485, F486
		Collar.....	200874	1	F47, F47C, F485, F486
9-2-28		Pawl.....	200881	1	F47, F47C, F485, F486
9.215 - TRANSMISSION OVERDRIVE STATIONARY GEAR COVER PLATE					
9-2-9		Plate.....	200877	1	F47, F47C, F485, F486
9-2-10		Snap Ring, .0625 Thick.....	200878	*	F47, F47C, F485, F486
9-2-10		Snap Ring, .0705 Thick.....	200879	*	F47, F47C, F485, F486
9-2-10		Snap Ring, .0665 Thick.....	200880	*	F47, F47C, F485, F486

*As required

TRANSMISSION

FIGURE NUMBER	GROUP	PART NAME and DESCRIPTION	PART NUMBER	QTY.	MODELS
		9.220 - TRANSMISSION OVERDRIVE STATIONARY GEAR PINION CAGE			
9-2-12		Cage (incl. Pinions, Shafts, Pins, Oil Ring, Bearing Rollers, and Spacers).....	200882	1	F47, F47C, F485, F486
		9.225 - TRANSMISSION OVERDRIVE FREE WHEELING CAM			
9-2-13		Cam (incl. Rollers, Retainer, Spring and Cage Clips).....	200883	1	F47, F47C, F485, F486
9-2-14		Clip.....	200884	1	F47, F47C, F485, F486
		9.230 - TRANSMISSION OVERDRIVE FREE WHEELING CAM BEARING			
9-2-16		Bearing, Roller.....	200885	12	F47, F47C, F485, F486
9-2-15		Retainer.....	200886	1	F47, F47C, F485, F486
9-2-17		Spring.....	200888	2	F47, F47C, F485, F486
		9.235 - TRANSMISSION OVERDRIVE MAINSHAFT			
9-2-32		Mainshaft (incl. Ring Gear and Snap Rings)	200889	1	F47, F47C, F485, F486
9-2-47		Oil Seal.....	201311	1	F47, F47C, F485, F486
		9.240 - TRANSMISSION OVERDRIVE MAINSHAFT BEARING			
9-2-34		Bearing.....	200893	2	F47, F47C, F485, F486
9-2-46		Snap Ring, .062 Thick.....	201395	*	F47, F47C, F485, F486
9-2-46		Snap Ring, .065 Thick.....	201396	*	F47, F47C, F485, F486
9-2-46		Snap Ring, .068 Thick.....	201397	*	F47, F47C, F485, F486
9-2-46		Snap Ring, .071 Thick.....	201398	*	F47, F47C, F485, F486
		9.245 - TRANSMISSION OVERDRIVE RING GEAR			
9-2-31		Ring Gear.....	200891	1	F47, F47C, F485, F486
9-2-33		Snap Ring, .062 Thick.....	200892	*	F47, F47C, F485, F486
		9.250 - TRANSMISSION OVERDRIVE SHIFT FORK			
9-2-26		Fork.....	200894	1	F47, F47C, F485, F486
9-2-22		Rail.....	200896	1	F47, F47C, F485, F486
9-2-27		Guide.....	200901	1	F47, F47C, F485, F486
9-2-25		"C" Washer.....	200897	1	F47, F47C, F485, F486
9-2-24		Cup.....	200898	1	F47, F47C, F485, F486
		9.255 - TRANSMISSION OVERDRIVE SHIFT CONTROL SHAFT			
9-2-21		Shaft.....	200902	1	F47, F47C, F485, F486
9-2-55		Pin.....	201327	1	F47, F47C, F485, F486
9-2-23		Spring, Lockup.....	200899	1	F47, F47C, F485, F486
9-2-18		Spring, Retractor.....	200900	1	F47, F47C, F485, F486
9-2-20		Oil Seal.....	200903	1	F47, F47C, F485, F486

*As required

TRANSMISSION

9

FIGURE NUMBER	GROUP	PART NAME and DESCRIPTION	PART NUMBER	QTY.	MODELS
9.260 - TRANSMISSION OVERDRIVE CONTROL SHAFT LEVER					
9-2-19		Lever.....	200904	1	F47, F47C, F485, F486
		Lever (R.H.D.).....	203544	1	F485
		Flatwasher.....	201339	1	F47, F47C, F485, F486
		Lockwasher, 5/16" Med.	240	1	F47, F47C, F485, F486
		Nut, 5/16" - 18 Hx. Lt.	205	1	F47, F47C, F485, F486
9.261 - TRANSMISSION OVERDRIVE CONTROL SHAFT LEVER SWIVEL					
		Swivel.....	202189	1	F47, F47C, F485, F486
		Flatwasher, 3/8" Sm.	247	1	F47, F47C, F485, F486
		Cotterpin, 3/32" x 3/4".....	139	1	F47, F47C, F485, F486
		Set Screw, No. 10 - 24 x 3/8" Sq. Hd. Cup. Pt.	517	1	F47, F47C, F485, F486
9.265 - TRANSMISSION OVERDRIVE GOVERNOR					
9-2-41		Governor.....	200908	1	F47, F47C, F485, F486
9-2-43		Pinion, 15 Teeth.....	200909	1	F47, F47C, F485, F486
9-2-44		Gear, 7 Teeth.....	200910	1	F47, F47C, F485, F486
9-2-40		Sleeve.....	200905	1	F47, F47C, F485, F486
9-2-42		Retainer.....	200906	1	F47, F47C, F485, F486
		Boot (Rubber).....	203101	1	F47, F47C, F485, F486
9.270 - TRANSMISSION OVERDRIVE CONTROL					
		Control (incl. Flat Type Knob, Wire and Housing).....	201639	1	F47
19-1-38		Control (incl. Ball Type Knob, Wire and Housing).....	202454	1	F47, F47C, F485, F486
		Lockwasher, 3/8" Int.	201	1	F47, F47C, F485, F486
		Nut, 3/8" - 24 Hx. Lt.	290	1	F47, F47C, F485, F486
		Knob and Wire (Flat Knob).....	202068	1	F47
		Knob and Wire (Ball Type).....	202455	1	F47, F47C, F485, F486
		Clip.....	201637	1	F47, F47C, F485, F486
		Control (incl. Knob, Wire and Housing) (R.H.D.).....	203511	1	F485
		Lockwasher, 1/2" Int. Tooth.....	642	1	F485
		Nut, 1/4" - 28 x 1 1/4" Hx. Hd.	632	1	F485
9.275 - TRANSMISSION OVERDRIVE CONTROL BRACKET (AT DASH PANEL)					
		Bracket (used with Flat Type Knob Control)	201613	1	F47
		Bracket (used with Ball Type Knob Control)	202456	1	F47, F47C, F485, F486
		Bracket (R.H.D.).....	203512	1	F485
		Screw, No. 10 - 24 x 1/2" Rd. Hd. Sl. ..	293	1	F47, F47C, F485, F486
		Flatwasher, No. 10 Sm.	248	1	F47, F47C, F485, F486
		Lockwasher, No. 10 Ext. Tooth.....	294	1	F47, F47C, F485, F486
		Nut, No. 10 - 24 Hx.	378	1	F47, F47C, F485, F486

TRANSMISSION

FIGURE NUMBER	GROUP	PART NAME and DESCRIPTION	PART NUMBER	QTY.	MODELS
9.276 - TRANSMISSION OVERDRIVE CONTROL CABLE BRACKET					
		Bracket (at No. 2 Crossmember).....	202188	1	F47, F47C, F485, F486
		Bolt, 1/4" - 20 x 1" Hx. Hd.	207	1	F47, F47C, F485, F486
		Lockwasher, 1/4" Med.	190	1	F47, F47C, F485, F486
		Nut, 1/4" - 20 Hx.	203	1	F47, F47C, F485, F486
9.280 - SPEEDOMETER					
		Speedometer Head (Miles).....	201378	1	F47, F47C, F485, F486
		Speedometer Head (Kilo.) (Export).....	202845	1	F47, F47C, F485, F486
		Screw, No. 8 - 32 x 1/4" Rd. Hd. Sl. ...	310	4	F47, F47C, F485, F486
		Gasket.....	201379	1	F47, F47C, F485, F486
		Speedometer Head (Miles) (R.H.D.).....	203500	1	F485
		Speedometer Head (Kilo.) (R.H.D.).....	203501	1	F485
		Speedometer Head (Miles) (WO/DS) (R.H.D.)..	203502	1	K481
		Speedometer Head (Kilo.) (WO/DS) (R.H.D.)..	203503	1	K481
		Stud, Upper.....	203516	1	F485, K481
		Stud, Lower.....	203517	1	F485, K481
		Lockwasher, No. 10 Med.	254	2	F485, K481
		Nut.....	203504	2	F485, K481
		Screw, No. 10 - 24 x 7/16" Fil. Hd. Cr. Rec.	643	2	F485, K481
		Lockwasher, No. 10 Med.	254	2	F485, K481
		Speedometer Head (Miles) (Green) (WO/DS)..	201599	1	K100
		Speedometer Head (Miles) (Green) (W/DS) (Export).....	202783	1	K100
		Speedometer Head (Miles) (Sandtone Beige) (WO/DS).....	202784	1	K100
		Speedometer Head (Miles) (Sandtone Beige) (W/DS) (K100 and K481 Export).....	202785	1	K100, K101, K481, K482
		Speedometer Head (Kilo.) (Green) (W/DS) (Export).....	202969	1	K100
		Speedometer Head (Kilo.) (Sandtone Beige) (W/DS) (Export).....	202968	1	K100, K101, K481, K482
		Screw, No. 8 - 32 x 1/4" Fil. Hd. Sl. ..	357	6	K100, K101, K481, K482
9.282 - SPEEDOMETER CABLE					
		Cable and Housing, St'd. Trans.	200922	1	All except F47C, F486
		Cable and Housing, Overdrive Trans.	201640	1	F47, F47C, F485, F486
		Cable and Housing, St'd. Trans. (R.H.D.)..	203520	1	F485, K481
		Cable and Housing, Overdrive Trans. (R.H.D.).....	203521	1	F485
		Bolt, 1/4" - 20 x 9/16" Rd. Hd. Sl.	440	1	All
		Lockwasher, 1/4" Med.	190	1	All
		Gasket.....	200923	1	All
		Seal, Drive Pinion (used with Drive Pinion without Grooves).....	201860	1	F47, K100
9.284 - SPEEDOMETER CABLE CORE					
		Core, St'd. Trans.	200924	1	All except F47C, F486
		Core, Overdrive Trans.	202013	1	F47, F47C, F485, F486
		Core, St'd. Trans. (R.H.D.).....	203522	1	F485, K481
		Core, Overdrive Trans. (R.H.D.).....	203523	1	F485

9.286 - SPEEDOMETER DRIVE GEAR AND PINION

Axle Ratio	Tire Size	Trans. Type	Speedometer Drive Gear			Speedometer Pinion		Models
			Part No.	No. Teeth	Part No.	No. Teeth		
3.73:1	6.50-15	Std.	202315	5	202314	14	All except F47C, F486	
3.73:1	7.10-15	Std.	202315	5	202314	14	All except F47C, F486	
3.73:1	6.50-16	Std.	202315	5	202314	14	All except F47C, F486	
4.09:1	6.50-15	Std.	200919	5	202000	15	All except F47C, F486	
4.09:1	7.10-15	Std.	200919	5	202000	15	All except F47C, F486	
4.09:1	6.50-16	Std.	200919	5	202000	15	All except F47C, F486	
4.27:1	6.50-15	W/OD	200920	5	200921	16	F47, F47C, F485, F486	
4.27:1	7.10-15	W/OD	200920	5	200921	16	F47, F47C, F485, F486	
4.27:1	6.50-16	W/OD	200920	5	200921	16	F47, F47C, F485, F486	
4.27:1	6.50-15	Std.	200919	5	200921	16	All except F47C, F486	
4.27:1	7.10-15	Std.	200919	5	200921	16	All except F47C, F486	
4.27:1	6.50-16	Std.	200919	5	200921	16	All except F47C, F486	

TRANSMISSION.

FIGURE NUMBER	GROUP	PART NAME and DESCRIPTION	PART NUMBER	QTY.	MODELS	FIGURE NUMBER
9.288 - SPEEDOMETER CABLE CLIP TO DASH						
		Clip.....	202098	1	K100, K101, K481, K482	
		Screw, No. 10 - 32 x 5/8" Rd. Hd. Sl. ..	419	1	K100, K101, K481, K482	9-3-
		Lockwasher, No. 10 Ext. Tooth.....	294	1	K100, K101, K481, K482	9-3-
9.300 - TRANSMISSION GEAR SHIFT LEVER						
9-3-27		Lever, Upper.....	201931	1	All	
		Lever, Upper (R.H.D.).....	203518	1	F485, K481	9-3-
9-3-26		Sleeve.....	201243	1	All	
9-3-25		Pin, 1/4" x 1 1/8".....	201242	1	All	9-3-
		Knob (Ball Type).....	201244	1	F47, K100	
9-3-28		Knob (Handle Type) (Sandtone Beige).....	201933	1	All	
9-3-28		Knob (Handle Type) (Magenta Maroon).....	202809	1	F47C, F486	
9-3-28		Knob (Handle Type) (Teal Blue).....	202810	1	F47C, F486	
9-3-28		Knob (Handle Type) (Broadcast Blue).....	202811	1	F47C, F486	9-3-
9-3-28		Knob (Handle Type) (Jasper Green).....	202812	1	F47C, F486	
9-3-28		Knob (Handle Type) (Hickory Brown).....	202813	1	F47C, F486	
9-3-28		Knob (Handle Type) (Wedgewood Blue).....	202814	1	F47C, F486	
9.305 - TRANSMISSION GEAR SHIFT LEVER GUIDE						
9-3-24		Guide.....	201247	1	All	
9-3-22		Spring, Upper.....	201248	1	All	
9-3-29		Spring, Lower.....	201249	1	All	
		Flatwasher.....	201250	1	All	9-3-
9.310 - TRANSMISSION GEAR SHIFT TUBE						
9-3-14		Tube.....	201251	1	All	9-3-
		Tube (R.H.D.).....	203519	1	F485, K481	9-3-
9-3-15		Pin, 9/32" x 1 1/32".....	201511	1	All	9-3-
9.315 - TRANSMISSION GEAR SHIFT TUBE BRACKET - UPPER						
9-3-23		Bracket.....	201245	1	All except F47C, F486	9-3-
		Bracket (R.H.D.).....	203524	1	F485, K481	
		Bolt, 1/4" - 28 x 3/8" Oval Hd. Cr. Rec.	201246	2	All except F47C, F486	
		Bracket.....	202464	1	F47C, F486	
		Bolt, 1/4" - 28 x 1/4" Hx. Hd.	276	2	F47C, F486	
		Lockwasher, 1/4" Ext. Tooth.....	370	2	F47C, F486	
9.320 - TRANSMISSION GEAR SHIFT LEVER - LOWER - LOW AND REVERSE						
9-3-12		Lever.....	201253	1	All	
		Seal.....	201512	1	All	
9-3-13		Retainer.....	201513	1	All	
9-3-8		Insulator.....	201517	1	All	
9.325 - TRANSMISSION GEAR SHIFT LEVER - LOWER - SECOND AND HIGH						
9-3-9		Lever.....	201258	1	All	
		Insulator.....	201517	1	All	

TRANSMISSION

FIGURE NUMBER	GROUP	PART NAME and DESCRIPTION	PART NUMBER	QTY.	MODELS
9.325 - TRANSMISSION GEAR SHIFT LEVER - LOWER - SECOND AND HIGH (CONT'D.)					
9-3-10		Cover.....	201514	1	All
9-3-3		Oiler.....	202121	1	All
9.330 - TRANSMISSION GEAR SHIFT LOWER LEVER RETAINER					
9-3-1		Retainer.....	201516	1	All
		Retainer (R.H.D.).....	203545	1	F485, K481
9-3-4		Spring Washer.....	201515	2	All
9.335 - TRANSMISSION GEAR SHIFT TUBE BRACKET - LOWER					
9-3-16		Bracket (incl. Cap and Pin).....	201260	1	All
		Bracket (incl. Bushing and Pin) (R.H.D.)..	203525	1	F485, K481
		Cap (R.H.D.).....	203526	1	F485, K481
		Bolt, 5/16" - 18 x 1 3/4" Hx. Hd.	587	2	All
		Lockwasher, 5/16" Med.	240	2	All
9-3-2		Dowel Pin, 1/4" x 1/2".....	489	1	All
		Dowel Pin, 1/4" x 7/16" (R.H.D.).....	646	1	F485, K481
9.340 - TRANSMISSION GEAR SHIFT ROD					
9-3-20		Rod (Low and Reverse).....	201261	1	All
		Rod (Second and High) up to Serial F47-6111, K100-10719.....	201262	1	F47, K100
9-3-11		Sleeve.....	201518	1	All
9-3-5		Flatwasher, 3/8" Sm.	247	2	All
9-3-6		Spring Washer.....	201263	1	All
9-3-7		Cotter Pin, 3/32" x 3/4"....	139	1	All
		Clevis.....	201264	1	All
		Nut, 3/8" - 24 Hx.	188	1	All
		Clevis Pin, 1 3/32" Lg.....	201265	1	All
		Cotter Pin, 3/32" x 3/4"....	139	1	All
9-3-31		Rod, Upper (Second and High) to Bellcrank.	202320	1	All
		Sleeve.....	201518	1	All
		Flatwasher, 3/8" Sm.	247	1	All
		Spring Washer.....	201263	1	All
		Cotter Pin, 3/32" x 3/4"....	139	1	All
		Flatwasher, 3/8" Sm.	247	2	All
		Spring Washer.....	201263	1	All
		Cotter Pin, 3/32" x 3/4"....	139	1	All
		Rod, Upper (Low and Reverse) (R.H.D.).....	203527	1	F485, K481
		Rod, Upper (Second and High) (R.H.D.).....	203528	1	F485, K481
		Flatwasher, 3/8" Sm.	247	10	F485, K481
		Spring Washer.....	201263	4	F485, K481
		Cotter Pin, 3/32" x 1/2".....	414	4	F485, K481
		Sleeve (Steering Column End) (R.H.D.).....	201518	2	F485, K481

NOTE: Used up to Serial F47-6111, K100-10719 on Second and High Rods and on all Low and Reverse Rods.

TRANSMISSION

FIGURE NUMBER	GROUP	PART NAME and DESCRIPTION	PART NUMBER	QTY.	MODELS
9.341 - TRANSMISSION GEAR SHIFT ROD BELLCRANK					
9-3-39		Bellcrank (Second and High).....	202321	1	All
9-3-37		Stud (Brake Master Cylinder).....	202322	1	All
		Flatwasher, 3/8" Sm.	247	2	All
9-3-38		Lockwasher, 3/8" Med.	192	1	All
		Cotter Pin, 3/32" x 3/4".....	139	1	All
9.342 - TRANSMISSION GEAR SHIFT ROD CROSS SHAFT R.H.D. ONLY					
		Shaft (Low and Reverse) (incl. Bushings)..	203532	1	F485, K481
		Insulator (incl. Bushing).....	203533	1	F485, K481
		Spring.....	203534	1	F485, K481
		Thrustwasher.....	203535	3	F485, K481
		Bracket (to Frame) up to Serial F485-5878, K481-21823.....	203486	1	F485, K481
		Bolt, 5/16" - 12 x 3/4" Hx. Hd. Tap. ...	445	2	F485, K481
		Shaft (Second and High).....	203537	1	F485, K481
		Bushing.....	203538	2	F485, K481
		Bracket (to Flywheel Housing).....	203539	1	F485, K481
		Bolt, 5/16" - 18 x 5/8" Hx. Hd.	208	2	F485, K481
		Lockwasher, 5/16" Med.	240	2	F485, K481
		Insulator (incl. Bushing).....	203540	1	F485, K481
		Thrustwasher.....	203541	1	F485, K481
		Thrustwasher.....	203535	1	F485, K481
		Lever (Low and Reverse).....	203542	1	F485, K481
		Bolt, 5/16" - 18 x 1 3/4" Hx. Hd.	587	1	F485, K481
		Flatwasher, 5/16" Sm.	225	1	F485, K481
		Lockwasher, 5/16" Med.	240	1	F485, K481
		Nut, 5/16" - 18 Hx. Lt.	205	1	F485, K481
9.343 - TRANSMISSION GEAR SHIFT ROD - LOWER					
9-3-34		Rod (Second and High).....	202324	1	All
9-3-36		Clevis.....	202323	1	All
9-3-35		Nut, 3/8" - 24 Hx. Lt. .	188	1	All
9-3-30		Clevis Pin, 29/32" Lg. .	200239	1	All
		Cotter Pin, 3/32" x 3/4".....	139	1	All
9-3-32		Flatwasher, 1/4" Sm. ..	344	2	All
		Spring Washer.....	201263	1	All
		Cotter Pin, 3/32" x 3/4".....	139	1	All
		Rod (Low and Reverse) (R.H.D.).....	203529	1	F485, K481
		Rod (Second and High) (R.H.D.).....	203530	1	F485, K481
		Flatwasher, 3/8" Sm.	247	4	F485, K481
		Spring Washer.....	201263	2	F485, K481
		Cotter Pin, 3/32" x 3/4".....	139	2	F485, K481
		Clevis (Low and Reverse Rod).....	203531	1	F485, K481
		Clevis (Second and High Rod).....	201264	1	F485, K481
		Nut, 3/8" - 24 Hx. Lt.	188	2	F485, K481
		Clevis Pin.....	203543	1	F485, K481
		Clevis Pin.....	201265	1	F485, K481
		Cotter Pin, 3/32" x 3/4".....	139	2	F485, K481

NOTES