

FIGURE 11-1 PROPELLER SHAFT AND UNIVERSAL JOINTS - MECHANICS TYPE - EXPLODED VIEW

FIGURE 11-1 PROPELLER SHAFT AND UNIVERSAL JOINTS - MECHANICS TYPE - EXPLODED VIEW

Key	Part Name	Group	Key	Part Name	Group
1	Shaft and Joint, Front - Standard		13	Insulator, Center Bearing Support	11.008
	Transmission.....	11.000	14	Flatwasher, Center Bearing	
2	Shield, Center Support Bearing			Support Inner.....	11.008
	Front.....	11.006	15	Flatwasher, Center Bearing	
3	Bearing, Center Support.....	11.006		Support Outer.....	11.008
4	Insulator, Center Bearing.....	11.006	16	Locknut, Center Bearing Support..	11.008
5	Support, Center Bearing.....	11.008	17	Shaft and Joints, Rear.....	11.014
6	Shield, Center Support Bearing Rear.....	11.006	18	Flange, Rear.....	11.020
7	Flange, Center.....	11.012	19	Lockplate.....	11.000
8	Flatwasher, Center Flange.....	11.012	20	Bolt, Propeller Shaft.....	11.000
9	Lockwasher, Center Flange.....	11.012	21	Slip Yolk, Rear Propeller Shaft..	11.018
10	Bolt, Center Flange.....	11.012	22	Oiler, Rear Propeller Shaft.....	11.014
11	Spacer, Center Bearing Support...	11.008	23	Cross and Bearing Kit.....	11.030
12	Bushing, Center Bearing Support..	11.008	24	Washer, Joint Bearing Cup Cork...	11.030
			25	Snap Ring, Joint Bearing Cup.....	11.030

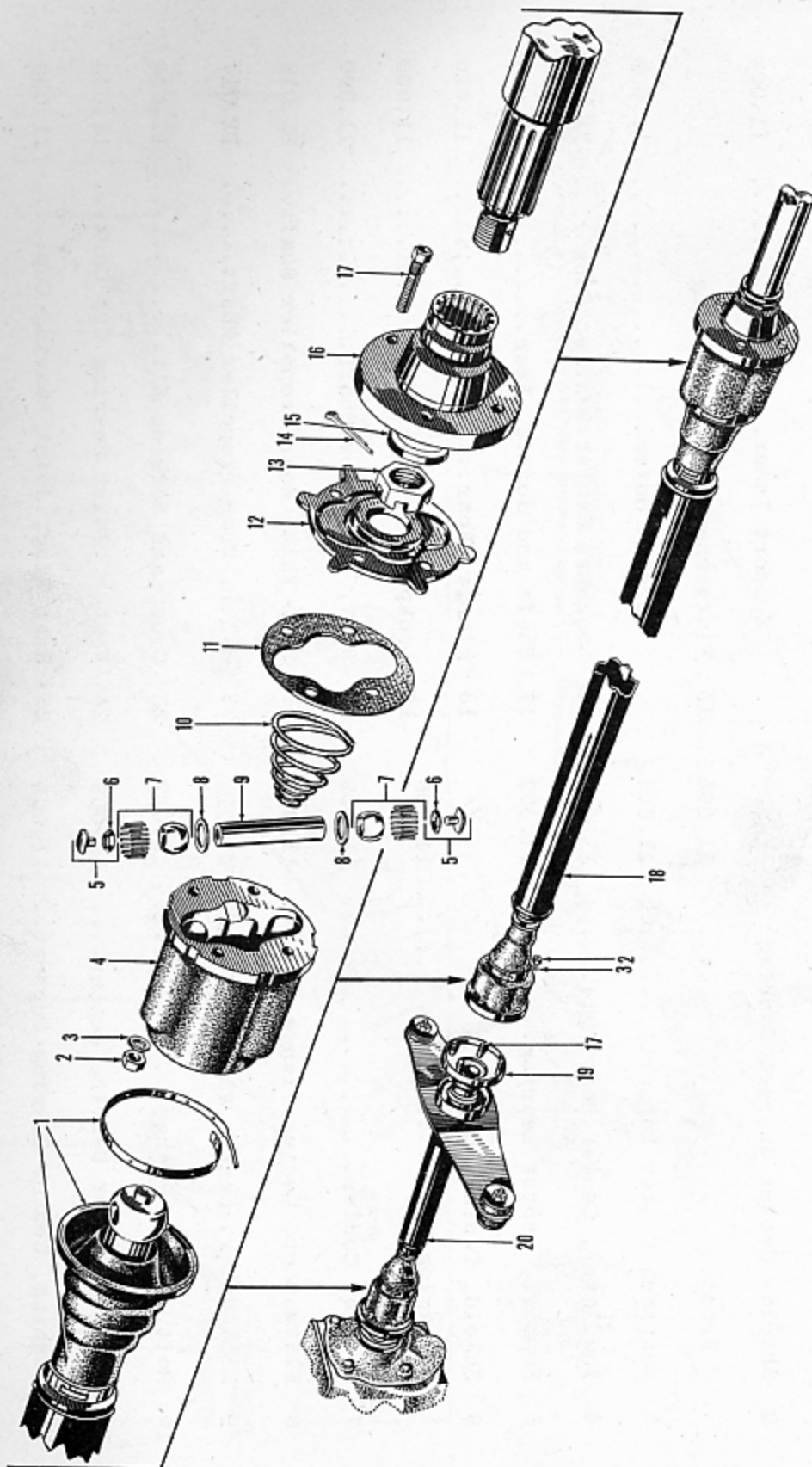


FIGURE 11-2—PROPELLER SHAFT AND UNIVERSAL JOINTS - UNIVERSAL TYPE - EXPLODED VIEW

Key	Part Name	Group	Key	Part Name	Group
1	Boot and Clamps.....	11.045	11	Gasket, Joint Body.....	11.035
2	Nut, Rear Propeller Shaft.....	11.014	12	Cover, Joint Body.....	11.035
3	Lockwasher, Rear Propeller Shaft.....	11.014	13	Nut, Rear Companion Flange.....	11.020
4	Body, Joint.....	11.035	14	Cotter Pin, Rear Companion Flange.....	11.020
5	Button Ass'y., Joint Centering.....	11.038	15	Flatwasher, Rear Companion Flange.....	11.020
6	Spring, Joint Centering Button.....	11.038	16	Flange, Rear.....	11.020
7	Ball and Rollers.....	11.037	17	Bolt, Rear Propeller Shaft.....	11.014
8	Thrustwasher.....	11.037	18	Shaft and Joints, Rear.....	11.014
9	Pin.....	11.037	19	Flange, Center.....	11.014
10	Spring, Companion Flange.....	11.040	20	Shaft and Joints, Forward.....	11.014
			21	Flange, Center.....	11.014
			22	Flange, Center.....	11.014
			23	Flange, Center.....	11.014
			24	Flange, Center.....	11.014
			25	Flange, Center.....	11.014
			26	Flange, Center.....	11.014
			27	Flange, Center.....	11.014
			28	Flange, Center.....	11.014
			29	Flange, Center.....	11.014
			30	Flange, Center.....	11.014
			31	Flange, Center.....	11.014
			32	Flange, Center.....	11.014

FIGURE NUMBER

11-1-1

11-1-20

11-1-19

11-2-20

11-1-2

9-1-43

9-1-41

9-1-44

9-1-44

9-1-44

11-1-

11-1-

11-1-

11-1-

11-1-

11-1-

11-1-

11-1-

PROPELLER or DRIVE SHAFT

FIGURE NUMBER	GROUP	PART NAME and DESCRIPTION	PART NUMBER	QTY.	MODELS
11.000 - PROPELLER SHAFT AND UNIVERSAL JOINT - FRONT					
11-1-1		Shaft and Joint, Std. Trans. (Mechanics)..	201017	1	F47, K100
		Shaft and Joint, Overdrive Trans. (Mechanics).....	201018	1	F47
11-1-20		Bolt, 5/16" - 24 x 3/4" Hx. Hd.	201020	4	F47, K100
11-1-19		Lockplate.....	201021	2	F47, K100
11-2-20		Shaft and Joint, Std. Trans. (Universal)..	201760	1	All except F47C, F486
		Shaft and Joint, Overdrive Trans. (Universal).....	202100	1	F47, F47C, F485, F486
		Bolt, 3/8" - 24 x 1 1/16" Hx. Hd.	201857	4	All
NOTE: A physical check must be made at the Universal Joint before replacing any bolt. If bolt is 1 1/4" long, 4 bolts 1 1/16" must be used.					
		Lockwasher, 3/8" Med.	192	4	All
		Nut, 3/8" - 24 Hx.	201859	4	All
11.002 - PROPELLER SHAFT AND YOKE - FRONT					
11-1-26		Shaft and Yoke, Std. Trans. (Mechanics)...	201025	1	F47, K100
		Shaft and Yoke, Overdrive Trans. (Mechanics).....	201026	1	F47
		Shaft and Yoke, Std. Trans. (Universal)...	201762	1	All except F47C, F486
		Shaft and Yoke, Overdrive Trans. (Universal).....	202101	1	F47, F47C, F485, F486
11.004 - PROPELLER SHAFT COMPANION FLANGE - FRONT					
9-1-43		Flange, Trans. (Mechanics).....	201022	1	F47, K100
9-1-41		Flange, Trans. (Universal).....	201803	1	All
9-1-44		Flatwasher, 49/64" x 1 1/2 x 3/32".....	201342	1	All
9-1-45		Lockwasher, 3/4" Med.	336	1	All
9-1-46		Nut, 3/4" - 16 Hx.	201341	1	All
11.006 - PROPELLER SHAFT CENTER SUPPORT BEARING					
11-1-3		Bearing.....	201038	1	All
11-1-2		Shield, Front.....	201040	1	All
11-1-6		Shield, Rear.....	201041	1	All
11-1-4		Insulator.....	201039	1	All
11.008 - PROPELLER SHAFT CENTER BEARING SUPPORT					
11-1-5		Support.....	201836	1	All
11-1-15		Flatwasher, Outer, 13/32" x 1 1/2" x 3/32"	201037	2	All
11-1-14		Flatwasher, Inner, 1 9/32" x 1 3/4" x 3/32".....	201839	2	All
11-1-13		Insulator (Rubber).....	202297	4	All

PROPELLER or DRIVE SHAFT

FIGURE NUMBER	GROUP	PART NAME and DESCRIPTION	PART NUMBER	QTY.	MODELS
11.008 - PROPELLER SHAFT CENTER BEARING SUPPORT (CONT'D)					
11-1-12		Bushing.....	202299	2	All
11-1-11		Spacer (Used with Stud).....	202298	2	All
		Bolt, 3/8" - 24 x 1 3/4" Hx. Hd. up to Serial ..	484	2	F47, K100
		Lockwasher, 3/8" Med. .. F47-1105 ..	192	2	F47, K100
		Nut, 3/8" - 24 Hx. K100-1104 ..	188	2	F47, K100
11-1-16		Locknut, after Serial F47-1105, K100- 1104.....	202140	2	All
11.012 - PROPELLER SHAFT COMPANION FLANGE - CENTER					
11-1-7		Flange (Mechanics).....	201023	1	F47, K100
11-2-19		Flange (Universal).....	201804	1	All
11-1-10		Bolt, 7/16" - 20 x 1 1/8" Hx. Hd.	331	1	All
11-1-8		Flatwasher, 29/64" x 1 5/16 x 3/16".....	201024	1	All
11-1-9		Lockwasher, 7/16".....	193	1	All
11.014 - PROPELLER SHAFT AND JOINTS - REAR					
11-1-17		Shaft and Joints (Mechanics).....	201019	1	F47, K100
		Bolt, 5/16" - 24 x 3/4" Hx. Hd.	201020	8	F47, K100
		Lockplate.....	201021	4	F47, K100
11-1-22		Oiler.....	202120	1	F47, K100
11-2-18		Shaft and Joints (Universal).....	201761	1	All
11-2-17		Bolt, 3/8" - 24 x 1" Hx. Hd.	201857	8	All
11-2-3		Lockwasher, 3/8" Med.	192	8	All
11-2-2		Nut, 3/8" - 24 Hx.	201859	8	All
11.016 - PROPELLER SHAFT AND YOKE - REAR					
		Shaft and Yoke (Mechanics).....	201027	1	F47, K100
		Shaft and Yoke (Universal).....	201763	1	All
11.018 - PROPELLER SHAFT SLIP YOKE - REAR SHAFT					
11-1-21		Yoke (Mechanics).....	201028	1	F47, K100
		Retainer.....	201032	1	F47, K100
		Oil Seal (Mechanics).....	201030	1	F47, K100
		Retainer.....	201031	1	F47, K100
		Cap.....	201029	1	F47, K100
11.020 - PROPELLER SHAFT COMPANION FLANGE - REAR					
11-1-18		Flange (Incl. Shield) (Mechanics).....	201002	1	F47, K100
11-2-16		Flange (Incl. Shield) (Universal).....	201779	1	All
11-2-15		Flatwasher, 49/64" x 1 1/2" x 1/8".....	200424	1	All
11-2-13		Nut, 3/4" - 16 Hx. Sl.	200423	1	All
11-2-14		Cotterpin, 7/64" x 1 1/2".....	337	1	All

PROPELLER or DRIVE SHAFT

11

FIGURE NUMBER	GROUP	PART NAME and DESCRIPTION	PART NUMBER	QTY.	MODELS
11.030 - UNIVERSAL JOINT REPAIR KIT					
11-1-23		Cross and Bearing Kit (Incl. Cross, Bearings, Washers, Snap Rings, Bolts and Lockplates) (Mechanics).....	201033	3	F47, K100
11-1-24		Washer (Cork) (Mechanics).....	201034	12	F47, K100
11-1-25		Snap Ring (Mechanics).....	201035	6	F47, K100
		Repair Kit, Joint (Incl. Boot and Clamp, Ball and Rollers, Thrustwashers, Pin, Button and Spring, Compensating Spring, Cover and Gasket) (Universal).....	201775	3	All
11.035 - UNIVERSAL JOINT BODY					
11-2-4		Body (Universal).....	201766	3	All
11-2-12		Cover (Universal).....	201774	3	All
11-2-11		Gasket (Universal).....	201773	3	All
11.037 - UNIVERSAL JOINT BALL AND ROLLER					
11-2-7		Ball and Rollers (Universal).....	201769	6	All
11-2-8		Thrustwasher (Universal).....	201768	6	All
11-2-9		Pin (Universal).....	201767	3	All
		Roller Pkg. (consists of 31 Rollers) (Universal).....	201776	6	All
11.038 - UNIVERSAL JOINT CENTERING SPRING AND BUTTON					
11-2-5		Button (Incl. Spring) (Universal).....	201770	6	All
11-2-6		Spring (Universal).....	201771	6	All
11.040 - UNIVERSAL JOINT COMPENSATING SPRING					
11-2-10		Spring (Universal).....	201772	3	All
11.045 - UNIVERSAL JOINT BOOT					
11-2-1		Boot and Clamps (Leather) (Replacement) (Universal).....	201764	3	All
11-2-1		Boot and Clamps (Rubber) (Overhaul) (Universal).....	201765	3	All
		Screw and Washer, No. 6 - 32 x 1 3/8" Rd. Hd. Sl. (Universal).....	201777	6	All
		Nut, No. 6 - 32 Sq. (Universal).....	201778	6	All