

FIGURE 12-1—TYPICAL REAR AXLE AND DIFFERENTIAL - EXPLODED VIEW

FIGURE 12-1—TYPICAL REAR AXLE AND DIFFERENTIAL - EXPLODED VIEW

Key	Part Name	Group	Key	Part Name	Group
1	Plug, Grease Fitting.....	12.005	24	Gear and Pinion Set.....	12.045
2	Housing Ass'y.	12.005	25	Key, Shaft.....	12.080
3	Cotter Pin.....	11.020	26	Nut, Shaft.....	12.080
4	Nut.....	11.020	27	Flatwasher, Shaft.....	12.080
5	Flatwasher.....	11.020	28	Bearing Cup, Shaft.....	12.080
6	Oil Seal, Drive Pinion Bearing.....	12.060	29	Bearing Cone, Shaft.....	12.080
7	Gasket, Drive Pinion Bearing Oil Seal.....	12.060	30	Shaft.....	12.080
8	Oil Slinger, Drive Pinion Bearing.....	12.060	31	Gasket, Housing Cover.....	12.005
9	Bearing Cone, Drive Pinion (Front).....	12.050	32	Cover, Housing.....	12.005
10	Bearing Cup, Drive Pinion (Front).....	12.050	33	Plug, Housing Filler.....	12.005
11	Oil Seal, Shaft Outer.....	12.080	34	Bolt.....	12.005
12	Gasket, Shaft Oil Seal.....	12.080	35	Lockwasher.....	12.005
13	Retainer, Shaft Bearing.....	12.080	36	Thrustwasher, Side Pinion.....	12.020
14	Shim, Shaft Bearing Adjusting.....	12.080	37	Thrust Block, Shaft.....	12.020
15	Oil Seal, Shaft Inner.....	12.080	38	Lockpin, Differential Pinion Gear	
16	Shim, Drive Pinion Bearing Adjusting- Front.....	12.050		Shaft.....	12.020
17	Spacer, Drive Pinion Bearing.....	12.060	39	Shaft, Differential Pinion Gear.....	12.020
18	Plug, Housing Drain.....	12.005	40	Thrustwasher, Side Pinion.....	12.020
19	Shim, Drive Pinion Bearing Adjusting- Rear.....	12.060	41	Gear and Pinion Kit.....	12.020
20	Lockwasher.....	12.015	42	Bearing Cup, Differential.....	12.035
21	Bolt.....	12.015	43	Bearing Cone, Differential.....	12.035
22	Bearing Cup, Drive Pinion.....	12.060	44	Shim, Differential Bearing Adjusting.....	12.035
23	Bearing Cone, Drive Pinion.....	12.060	45	Lockplate.....	12.045
			46	Bolt.....	12.045
			47	Case, Differential.....	12.015

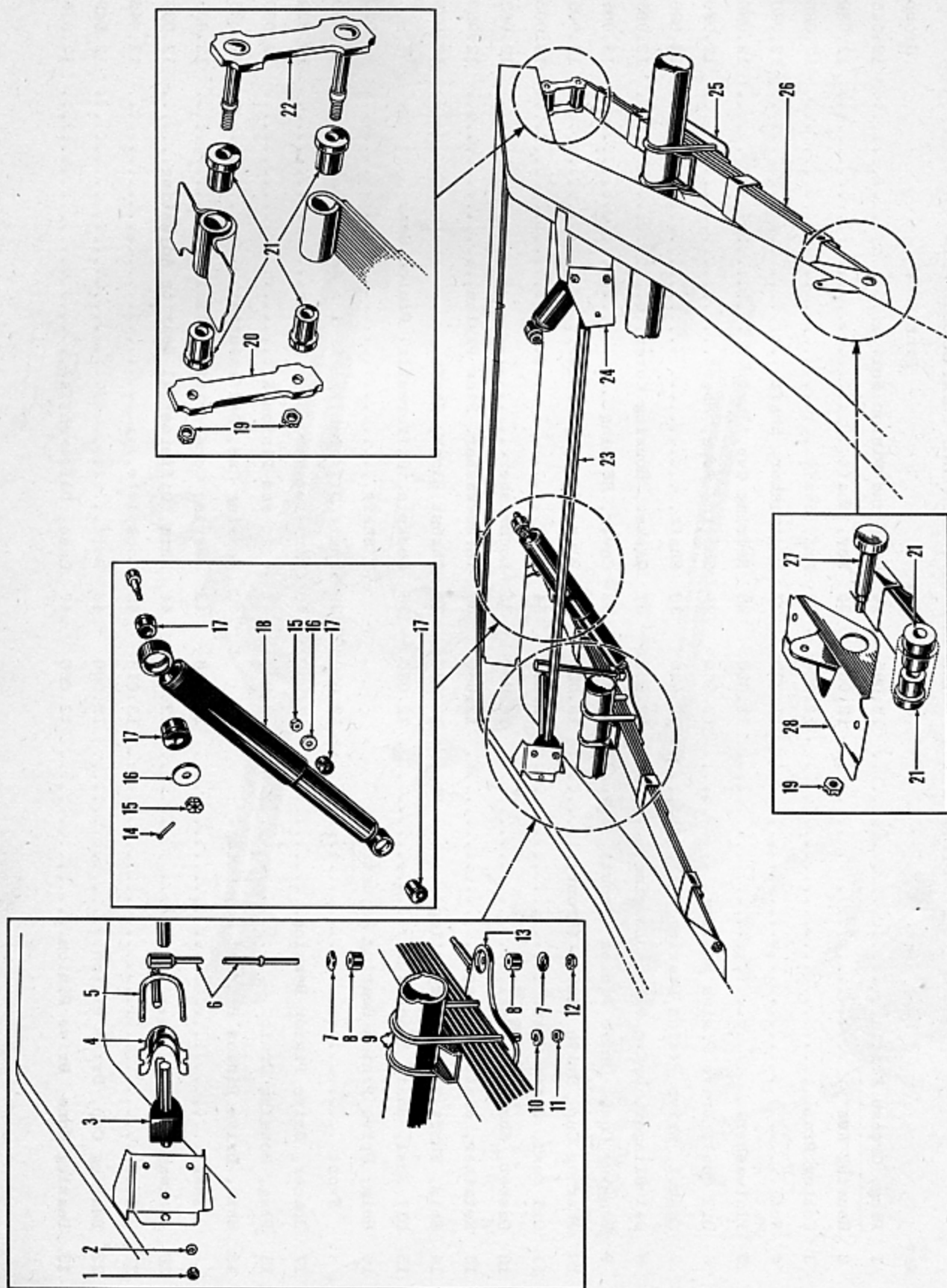


FIGURE 12-2—TYPICAL REAR SUSPENSION - EXPLODED VIEW

FIGURE 12-2—TYPICAL REAR SUSPENSION - EXPLODED VIEW

Key	Part Name	Group	Key	Part Name	Group
1	Nut.....	12.300	14	Cotter Pin.....	20.010
2	Lockwasher.....	12.300	15	Nut.....	20.010
3	Bushing, Rear Sway Eliminator Bar...	12.300	16	Flatwasher.....	20.010
4	Retainer, Rear Sway Eliminator		17	Bushing, Rear Shock Absorber.....	20.010
	Bar Bushing.....	12.300	18	Shock Absorber.....	20.010
5	"U" Bolt, Rear Sway Eliminator Bar..	12.300	19	Locknut.....	12.220
6	Link, Rear Sway Eliminator Bar.....	12.305	20	Link, Rear Spring Shackle.....	12.220
7	Retainer, Rear Sway Eliminator		21	Bushing, Rear Spring Shackle.....	12.220
	Bar Cushion.....	12.305	22	Shackle, Rear Spring.....	12.200
8	Cushion, Rear Sway Eliminator		23	Bar Ass'y., Rear Sway Eliminator....	12.300
	Bar Link.....	12.305	24	Bracket, Rear Brake Hose.....	15.072
9	"U" Bolt, Rear Spring.....	12.215	25	Plate, Rear Spring Mounting - Left..	12.215
10	Lockwasher.....	12.215	26	Spring, Rear.....	12.200
11	Nut.....	12.215	27	Bolt.....	12.225
12	Nut.....	12.305	28	Hanger, Rear Spring Front.....	12.225
13	Plate, Rear Spring Mounting - Right.	12.215			

REAR AXLE and SUSPENSION

FIGURE NUMBER	GROUP	PART NAME and DESCRIPTION	PART NUMBER	QTY.	MODELS
12.000 - REAR AXLE					
Rear Axles as listed are less Brakes and Backing Plates.					
NOTE: The Companion Flange must be checked and changed to fit the Propeller Shaft used.					
		Rear Axle, 4.27 Ratio.....	200367	1	F47, F47C, F485, F486
		Rear Axle, 4.09 Ratio.....	201875	1	K100, K101, K481, K482
		Rear Axle, 3.73 Ratio.....	202312	1	K100, K101, K481, K482
12.005 - REAR AXLE HOUSING					
12-1-2		Housing.....	200368	1	All
12-1-18		Plug, Drain, 3/4" - 14 Hdls. Cts'k.	339	1	All
12-1-1		Plug, Grease Fitting, 1/8" - 27 Pipe Sl. Hdls.	527	2	All
12-1-32		Cover.....	200369	1	All
12-1-34		Bolt, 3/8" - 16 x 5/8" Hx. Hd.	200370	10	All
12-1-35		Lockwasher, 3/8" Med.	192	10	All
12-1-31		Gasket.....	200371	1	All
12-1-33		Plug, Filler, 3/4" - 14 Sq. Hd. Pipe.....	338	1	All
12.015 - REAR AXLE DIFFERENTIAL CASE					
12-1-47		Case.....	200388	1	All
12-1-21		Bolt, 1/2" - 13 x 2 1/4" Hx. Hd.	200396	4	All
12-1-20		Lockwasher.....	200397	4	All
12.020 - REAR AXLE DIFFERENTIAL GEAR AND PINION KIT					
12-1-41		Gear and Pinion Kit (incl. Side Gears, Pinions, Shaft, Thrustblock, Thrust- washer and Lock Pin).....	202052	1	All
12-1-40		Thrustwasher, Side Gear.....	200399	2	All
12-1-36		Thrustwasher, Side Pinion.....	200401	2	All
12-1-39		Shaft, Pinion Gear.....	200402	1	All
12-1-38		Lock Pin.....	200403	1	All
12-1-37		Thrustblock.....	200377	1	All
12.035 - REAR AXLE DIFFERENTIAL BEARING					
12-1-43		Bearing Cone.....	200390	2	All
12-1-42		Bearing Cup.....	200389	2	All
12-1-44		Shim, .003.....	200391	*	All
12-1-44		Shim, .005.....	200392	*	All
12-1-44		Shim, .010.....	200393	*	All
12-1-44		Shim, .030.....	200394	*	All
12.045 - REAR AXLE DRIVE GEAR AND PINION					
12-1-24		Gear and Pinion, 4.27 Ratio (47 T. Gear, 11 T. Pinion).....	200404	1	F47, F47C, F485, F486
12-1-24		Gear and Pinion, 4.09 Ratio (45 T. Gear, 11 T. Pinion).....	202089	1	K100, K101, K481, K482

*As required

REAR AXLE and SUSPENSION

12

FIGURE NUMBER	GROUP	PART NAME and DESCRIPTION	PART NUMBER	QTY.	MODELS
12.045 - REAR AXLE DRIVE GEAR AND PINION (CONT'D.)					
12-1-24		Gear and Pinion, 3.73 Ratio (41 T. Gear, 11 T. Pinion).....	202518	1	K100, K101, K481, K482
12-1-46		Bolt.....	200405	10	All
12-1-45		Lockplate.....	200406	5	All
12.050 - REAR AXLE DRIVE PINION BEARING - FRONT					
12-1-9		Bearing Cone.....	200418	1	All
12-1-10		Bearing Cup.....	200417	1	All
12-1-16		Shim, .003.....	200413	*	All
12-1-16		Shim, .005.....	200414	*	All
12-1-16		Shim, .010.....	200415	*	All
12-1-16		Shim, .030.....	200416	*	All
12.060 - REAR AXLE DRIVE PINION BEARING - REAR					
12-1-23		Bearing Cone.....	200411	1	All
12-1-22		Bearing Cup.....	200410	1	All
12-1-19		Shim, .003.....	200407	*	All
12-1-19		Shim, .005.....	200408	*	All
12-1-19		Shim, .010.....	200409	*	All
12-1-6		Oil Seal.....	200420	1	All
12-1-8		Slinger.....	200419	1	All
12-1-7		Gasket.....	200421	1	All
12-1-17		Spacer.....	200412	1	All
12.080 - REAR AXLE SHAFT					
12-1-30		Shaft.....	200373	2	All
12-1-25		Key.....	200374	2	All
12-1-27		Flatwasher, 1 1/32" x 1 5/16" x 1/8"....	200376	2	All
12-1-26		Nut, 1" - 14 Hx. Sl.	200375	2	All
		Cotter Pin, 1/8" x 1 1/2".....	341	2	All
12-1-15		Oil Seal, Inner.....	200378	2	All
12-1-37		Thrustblock.....	200377	1	All
12-1-29		Bearing Cone.....	200380	2	All
12-1-28		Bearing Cup.....	200379	2	All
12-1-14		Shim, .003.....	200381	*	All
12-1-14		Shim, .005.....	200382	*	All
12-1-14		Shim, .010.....	200383	*	All
12-1-14		Shim, .030.....	200384	*	All
12-1-13		Retainer, Bearing.....	200385	2	All
12-1-12		Gasket, Bearing Retainer.....	200435	2	All
12-1-11		Oil Seal, Outer.....	200386	2	All
		Bolt, 3/8" - 24 x 1 1/4" Hx. Hd.	200387	12	All
		Lockwasher, 3/8" Hy.	340	12	All
		Nut, 3/8" - 24 Hx.	188	12	All
12-1-12		Gasket, Outer Oil Seal.....	200435	2	All

*As required

FIGURE NUMBER	GROUP	PART NAME and DESCRIPTION	PART NUMBER	QTY.	MODELS
12.200 - REAR SPRING					
NOTE: Spring 201144 must be ordered in pairs. Heavy duty Rear Shock Absorber Part No. 203462 must be used with heavy duty Rear Spring Part No. 203364.					
12-2-26		Spring.....	201144	2	All
		Spring, Heavy Duty.....	203364	2	All
		Insulator (Spring to Plate).....	202246	4	All
12.215 - REAR SPRING MOUNTING PLATE					
12-2-13		Plate, Right.....	200426	1	All
12-2-25		Plate, Left.....	200427	1	All
12-2-9		"U" Bolt, up to Serial F47-7278, K100-13057.....	200428	4	F47, K100
		"U" Bolt, after Serial F47-7278, K100-13057.....	202573	4	All
12-2-10		Lockwasher, 9/16" Med.	342	8	All
12-2-11		Nut, 9/16" - 18 Hx.	200429	8	All
		Insulator.....	202246	4	All
12.220 - REAR SPRING SHACKLE					
12-2-22		Shackle.....	200433	2	All
		Locknut, 13/32" - 20 Hx.	200432	4	F47, F47C, K100, K101
12-2-19		Locknut, 3/8" - 24 Hx.	203311	4	All
		Link (Round End).....	200434	2	F47, F47C, K100, K101
12-2-20		Link (Square End).....	202772	2	All
12-2-21		Bushing.....	200430	8	All
12.225 - REAR SPRING FRONT HANGER					
12-2-28		Hanger.....	202683	2	All
12-2-27		Bolt.....	200431	2	All
		Locknut, 13/32" - 20 Hx.	200432	2	F47, F47C, K100, K101
12-2-19		Locknut, 3/8" - 24 Hx.	203311	2	All
		Bushing.....	200430	4	All
12.230 - REAR SPRING (OR AXLE) BUMPER					
		Bumper, up to Serial F47-4561, K100-7051..	200372	2	F47, K100
		Bumper, after Serial F47-4561, K100-9051..	201925	2	All
		Bolt, 1/4" - 20 x 1" Hx. Hd. Tap.....	343	4	All
12.300 - REAR SWAY ELIMINATOR BAR					
12-2-23		Bar (incl. Bushings and Links).....	201010	1	F47, F47C, K100
12-2-5		"U" Bolt, 5/16" - 24.	201013	2	F47, F47C, K100
12-2-2		Lockwasher, 5/16" Med.	240	4	F47, F47C, K100
12-2-1		Nut, 5/16" - 24 Hx.	189	4	F47, F47C, K100
12-2-3		Bushing.....	201011	2	F47, F47C, K100
12-2-4		Retainer.....	201012	2	F47, F47C, K100

FIGURE NUMBER	GROUP	PART NAME and DESCRIPTION	PART NUMBER	QTY.	MODELS
12.305 - REAR SWAY ELIMINATOR BAR LINK					
12-2-6		Link.....	up to Serial } . 202090	2	F47, F47C, K100
12-2-8		Cushion.....	F47-26608, } . 201014	4	F47, F47C, K100
12-2-7		Retainer.....	F47C-1,010,145, } . 201015	4	F47, F47C, K100
12-2-12		Locknut, 3/8" - 24....	K100-35236 } . 202257	2	F47, F47C, K100