

FIGURE 3-1 — INTAKE AND EXHAUST MANIFOLDS (DUAL TYPE)

FIGURE 3-1 — INTAKE AND EXHAUST MANIFOLDS (DUAL TYPE)

KEY	PART NAME	GROUP
1	Lockwasher, Carburetor Mounting Nut.....	3.660
2	Nut, Carburetor Mounting.....	3.660
3	Gasket, Intake and Exhaust Manifold to Block.....	3.000
4	Stud, Exhaust Manifold to Block, Center.....	5.000
5	Stud, Exhaust and Intake Manifold to Block.....	5.000
6	Stud, Exhaust Manifold to Block, Ends.....	5.000
7	Stud, Carburetor and Intake and Exhaust Manifold Mounting.....	3.660
8	Manifold Assembly, Intake.....	3.000
9	Gasket, Intake to Exhaust Manifold.....	3.000
10	Valve, Heat Control.....	5.010
11	Bushing, Heat Control Shaft.....	5.010
12	Flatwasher, Exhaust Manifold to Block Center Stud.....	5.000
13	Nut, Intake and Exhaust Manifold to Block.....	5.000
14	Retainer, Intake and Exhaust Manifold to Block.....	5.000
15	Flatwasher, Exhaust Manifold End Stud.....	5.000
16	Counterweight, Heat Control Valve.....	5.020
17	Nut, Counterweight to Shaft.....	5.020
18	Key, Counterweight to Shaft.....	5.020
19	Screw, Counterweight to Shaft.....	5.020
20	Thermostat, Heat Control.....	5.010
21	Shaft, Heat Control Valve.....	5.010
22	Manifold Assembly, Exhaust (incl. Studs and Heat Valve).....	5.000
23	Stud, Exhaust Pipe to Manifold.....	5.040
24	Nut, Intake to Exhaust Manifold.....	3.000
25	Flatwasher, Intake to Exhaust Manifold.....	3.000

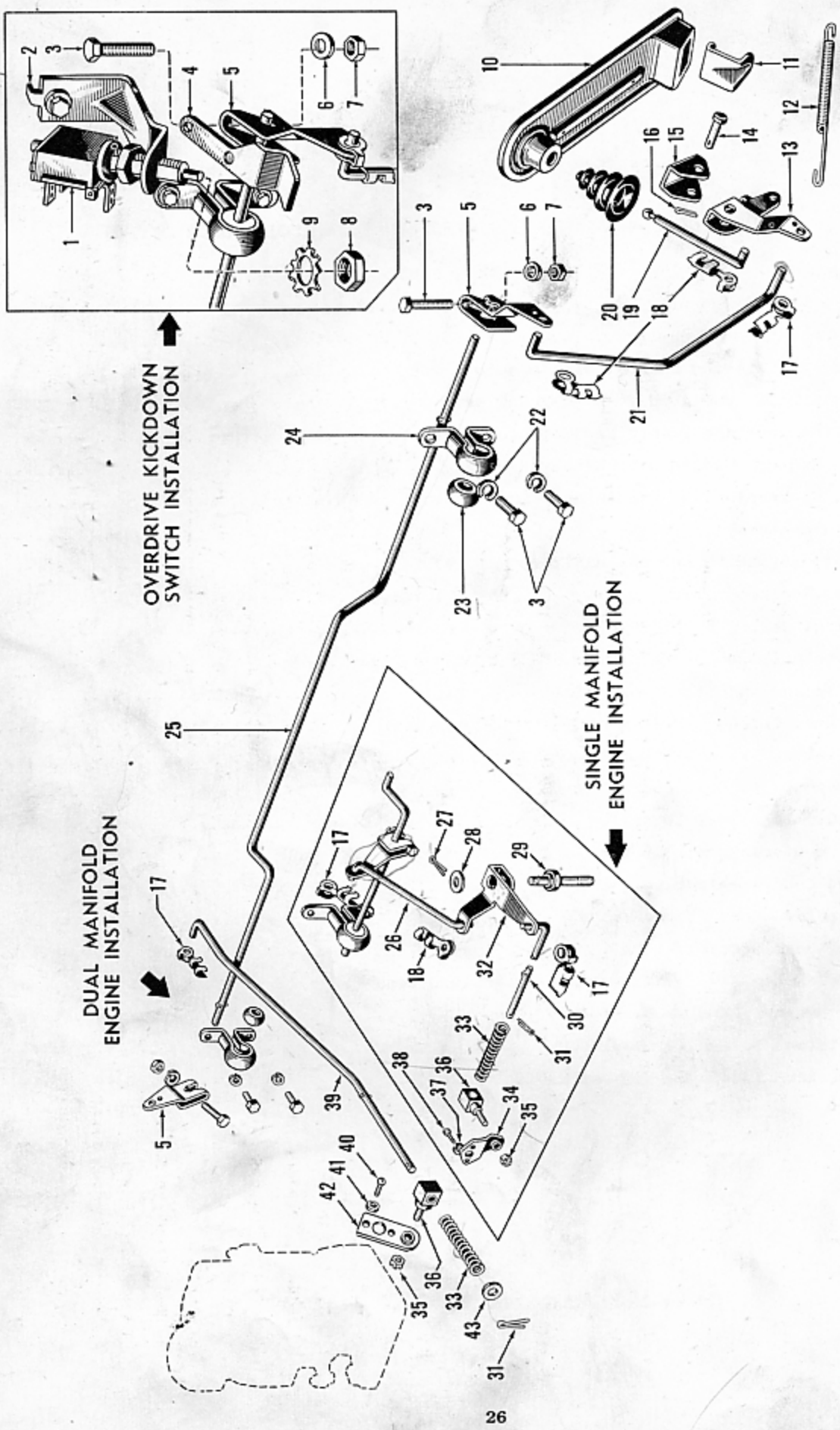


FIGURE 3-2 — ACCELERATOR LINKAGE - EXPLODED VIEW

FIGURE 3-2 — ACCELERATOR LINKAGE - EXPLODED VIEW

KEY	PART NAME	GROUP	KEY	PART NAME	GROUP
1	Switch, Overdrive Kickdown.....	7.806	23	Bearing, Cross Shaft.....	3.430
2	Bracket, Overdrive Kickdown Switch.....	7.806	24	Bracket, Cross Shaft Mounting.....	3.430
3	Bolt, Lever to Cross Shaft.....	3.410	25	Cross Shaft.....	3.430
4	Lever, Overdrive Kickdown Switch.....	3.410	26	Rod, Cross Shaft to Bell Crank.....	3.450
5	Lever, Cross Shaft.....	3.410	27	Cotter Pin, Bell Crank to Cylinder Head Stud.....	3.450
6	Flatwasher, Lever to Cross Shaft Nut.....	3.410	28	Flatwasher, Bell Crank to Cylinder Head Stud.....	3.450
7	Nut, Lever to Cross Shaft.....	3.410	29	Stud, Bell Crank to Cylinder Head.....	3.450
8	Nut, Overdrive Kickdown Switch Mounting.....	7.806	30	Rod, Bell Crank to Connector.....	3.450
9	Lockwasher, Overdrive Kickdown Switch Nut.....	7.806	31	Cotter Pin, Spring to Rod.....	3.450
10	Pedal, Accelerator.....	3.070	32	Bell Crank.....	3.450
11	Bracket, Pedal to Floor.....	3.070	33	Spring, Extension Shaft.....	3.450
12	Spring, Linkage Tension.....	3.400	34	Connector, Extension Shaft to Carburetor.....	3.460
13	Bell Crank.....	3.090	35	Locknut, Swivel to Connector.....	3.450
14	Clevis Pin, Bell Crank to Bracket.....	3.090	36	Swivel, Extension Shaft to Connector.....	3.450
15	Bracket, Bell Crank, Lower.....	3.090	37	Lockwasher, Connector to Carburetor.....	3.460
16	Cotter Pin, Bell Crank Clevis Pin.....	3.090	38	Screw, Connector to Carburetor.....	3.460
17	Clip.....	3.410	39	Shaft, Extension.....	3.450
18	Clip.....	3.080	40	Screw, Connector to Carburetor.....	3.460
19	Rod, Pedal to Bell Crank.....	3.080	41	Lockwasher, Connector to Carburetor.....	3.460
20	Boot, Pedal.....	3.070	42	Connector, Extension Shaft to Carburetor.....	3.460
21	Rod, Bell Crank Link.....	3.410	43	Flatwasher, Spring to Extension Shaft.....	3.450
22	Lockwasher, Cross Shaft Bracket Mounting.....	3.430			

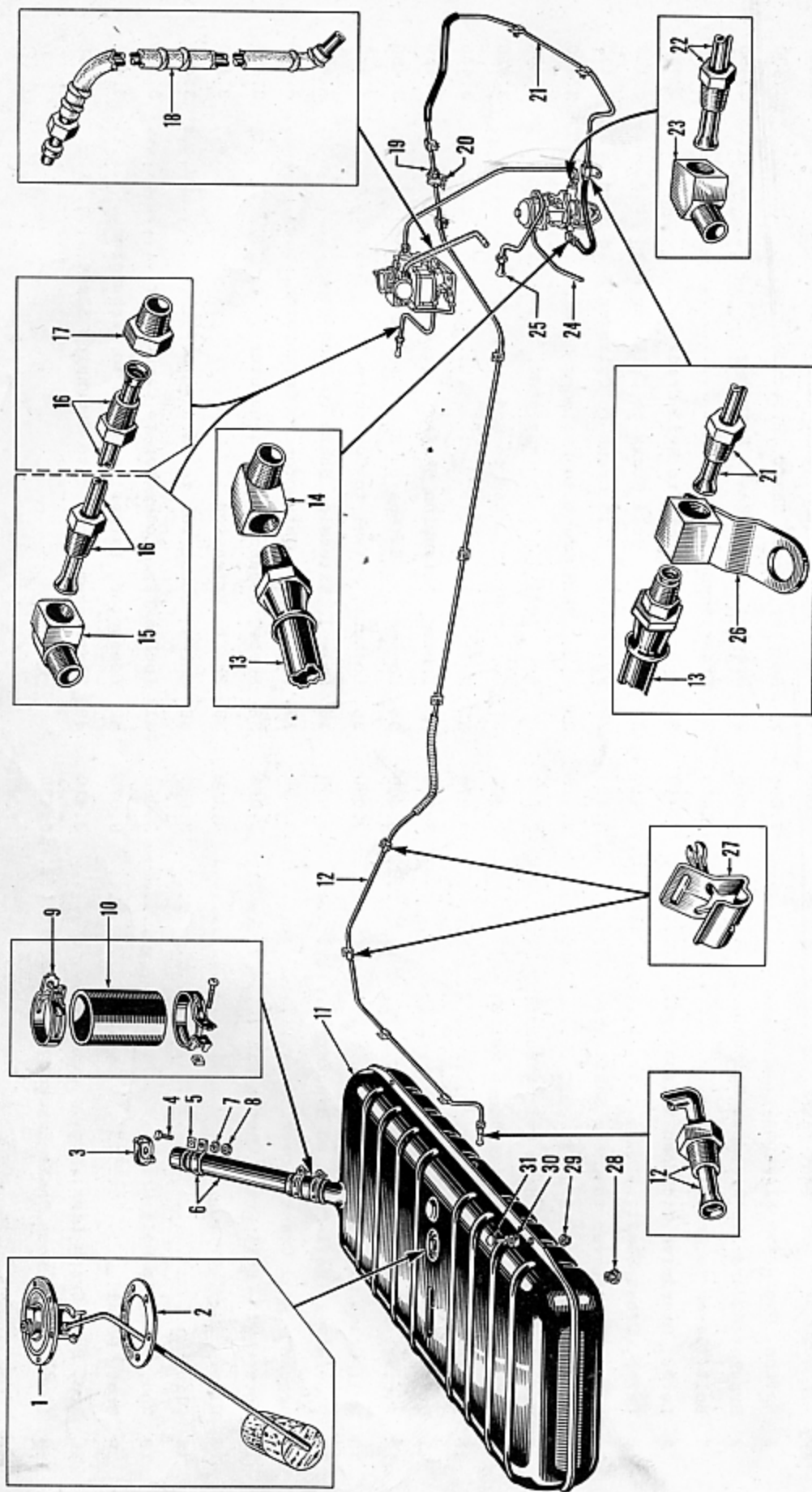


FIGURE 3-3 — CHASSIS FUEL AND VACUUM LINES - INSTALLED VIEW

FIGURE 3-3 — CHASSIS FUEL AND VACUUM LINES - INSTALLED VIEW

KEY	PART NAME	GROUP	KEY	PART NAME	GROUP
1	Gauge, Fuel, Tank Unit.....	3.580	17	Connector, Distributor Vacuum Chamber Tube to Carburetor.....	7.340
2	Gasket, Fuel Gauge Tank Unit.....	3.580	18	Tube, Carburetor Choke.....	3.010
3	Cap, Fuel Tank Filler Tube.....	3.520	19	Union, Tank to Fuel Pump Line.....	3.550
4	Bolt, Filler Tube to Quarter Panel.....	3.530	20	Clip, Union to Frame.....	3.550
5	Insulator, Filler Tube to Quarter Panel.....	3.530	21	Tube, Union to Fuel Pump.....	3.550
6	Tube, Filler.....	3.530	22	Tube, Pump to Carburetor.....	3.560
7	Lockwasher, Filler Tube to Quarter Panel.....	3.530	23	Elbow, Pump to Carburetor Tube.....	3.560
8	Nut, Filler Tube to Quarter Panel.....	3.530	24	Tube, Vacuum Pump to Windshield Wiper Hose.....	3.560
9	Clamp, Filler Tube Hose Connector.....	3.530	25	Tube, Vacuum Pump to Manifold.....	3.560
10	Hose, Filler Tube Connector.....	3.530	26	Fitting, Tank to Fuel Pump Line.....	3.550
11	Tank, Fuel.....	3.520	27	Clip, Fuel Lines to Frame.....	3.550
12	Tube, Tank to Union.....	3.550	28	Plug, Tank Drain.....	3.520
13	Tube, Frame Fitting to Fuel Pump (Flexible).....	3.550	29	Locknut, Tank Mounting.....	3.520
14	Elbow, Fuel Pump Flexible Tube to Fuel Pump.....	3.550	30	Spacer, Tank Mounting.....	3.520
15	Elbow, Distributor Vacuum Chamber Tube to Distributor.....	7.340	31	Bolt, Tank Mounting.....	3.520
16	Tube, Distributor Vacuum Chamber.....	7.340			

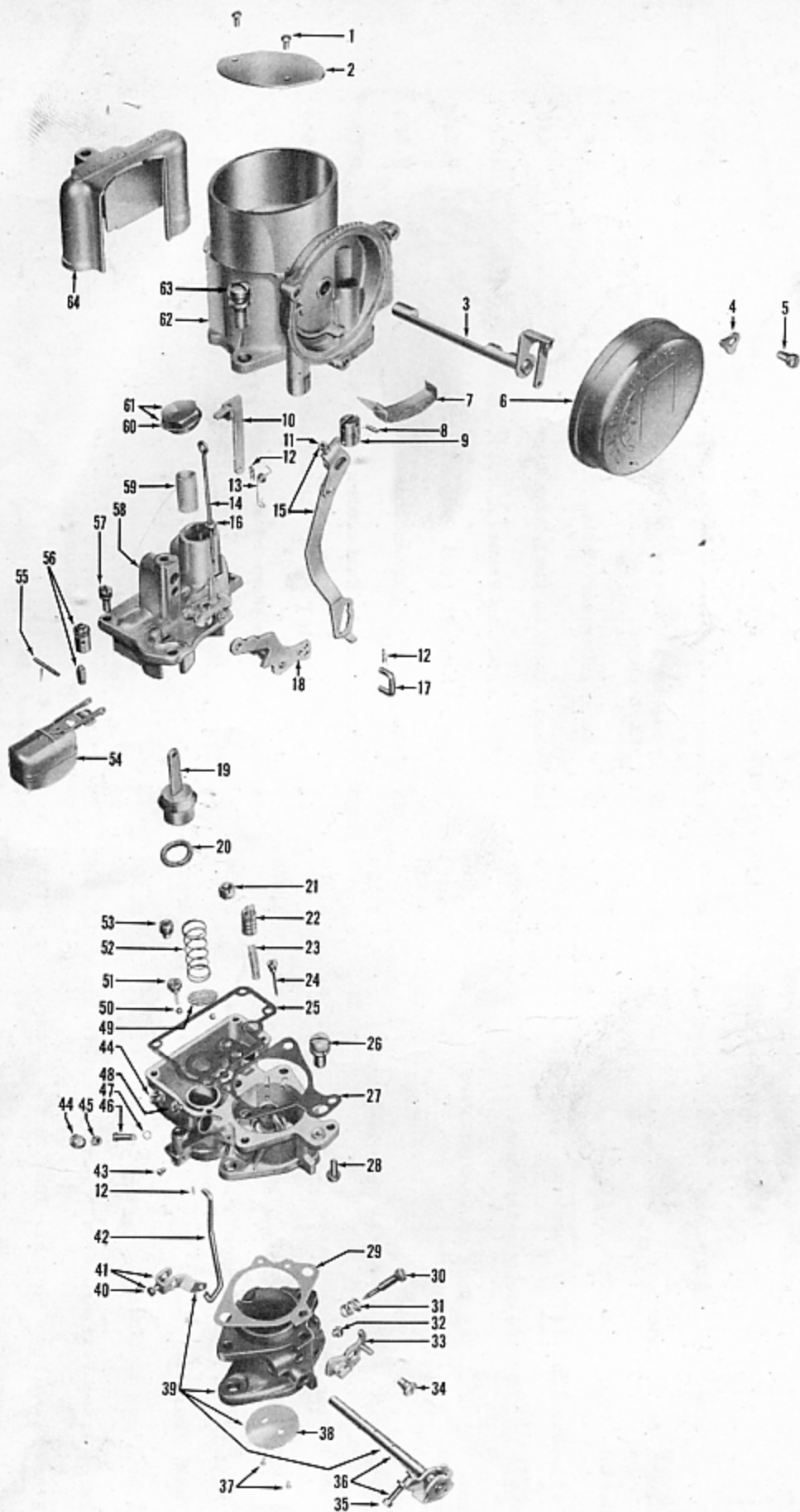


FIGURE 3-4 — CARBURETOR, CARTER MODEL WA1-622SB, PART NO. 204108, SINGLE MANIFOLD ENGINES

Group 3.640

FIGURE 3-4 — CARBURETOR, CARTER MODEL WA1-622SB, PART NO. 204108, SINGLE MANIFOLD ENGINES

KEY	PART NAME	PART NO.	QTY.
1	Screw, Choke Valve.....	201670	2
2	Valve, Choke.....	201669	1
3	Piston, Link and Shaft Assembly, Choke.....	201659	1
4	Retainer, Climatic Control Housing.....	201656	3
5	Screw, Climatic Control.....	201657	3
6	Housing and Coil, Climatic Control.....	201655	1
7	Screen, Climatic Control Housing.....	201658	1
8	Pin, Choke Piston.....	201661	1
9	Piston, Choke.....	201660	1
10	Link and Spring, Pump Operating.....	201747	1
11	Screw, Choke Lever Clamp.....	201663	1
12	Pin Spring.....	201687	3
13	Spring, Metering Rod.....	201685	1
14	Metering Rod, Standard.....	204107	1
	Metering Rod, 1st Lean.....	204158	1
	Metering Rod, 2nd Lean.....	204159	1
	Metering Rod Kit (consists of (1) 1st Lean and (1) 2nd Lean Metering Rod.....	204247	1
15	Lever, Link and Screw Assembly, Choke.....	201731	1
16	Disc, Metering Rod.....	201696	1
17	Link, Pump.....	201744	1
18	Lever and Countershaft, Pump Operating.....	201746	1
19	Rod and Plunger Assembly, Accelerating Pump.....	201742	1
20	Spring, Accelerating Pump Piston.....	201701	1
21	Jet and Gasket Assembly, Metering Rod.....	201737	4
22	Piston and Pin, Vacuum.....	201714	1
23	Spring, Vacuum Piston.....	201749	1
24	Jet Assembly, Low Speed.....	204106	1
25	Gasket, Bowl Cover.....	201674	1
26	Screw and Washer, Main Body to Throttle Body.....	201649	2
27	Gasket, Main Body.....	201650	1
28	Screw and Washer, Choke Body to Main Body.....	201654	1
29	Gasket, Throttle Body to Main Body.....	201648	1
30	Screw, Idle Adjusting.....	201667	1
31	Spring, Idle Adjusting Screw.....	201668	1
32	Rivet Plug.....	201751	1
33	Cam and Pin Assembly, Fast Idle.....	201732	1
34	Screw, Fast Idle Cam.....	201666	1
35	Adjusting Screw, Throttle Lever.....	201647	1
36	Shaft Assembly, Throttle Valve.....	201728	1
37	Screw, Throttle Valve.....	201645	2
38	Valve, Throttle.....	201727	1
39	Body Flange Assembly.....	201726	1
40	Set Screw, Throttle Shaft Arm.....	201718	1
41	Arm and Screw Assembly, Throttle Shaft.....	201717	1
42	Rod, Throttle Connector.....	201716	1
43	Rivet Plug.....	201723	5
44	Plug and Gasket Assembly.....	201691	2
45	Plug, Main Discharge Nozzle Retaining.....	201740	1
46	Nozzle, Main Discharge.....	201739	1
47	Gasket, Main Discharge Nozzle.....	201689	1
48	Jet, Pump.....	201748	1
49	Strainer, Accelerating Pump.....	201703	1
50	Ball, Accelerating Pump Check.....	201704	2
51	Plug and Gasket Assembly, Pump Check Ball.....	201705	1
52	Spring, Accelerating Pump.....	201743	1
53	Plug and Gasket Assembly, Idle Passage.....	201693	1
54	Float and Lever Assembly.....	202371	1
55	Pin, Float Lever Fulcrum.....	201682	1
56	Needle and Seat Assembly, Float.....	202372	1
57	Screw and Washer, Dust and Bowl Cover.....	201672	5
58	Cover, Bowl.....	201735	1
59	Strainer, Bowl.....	201575	1
60	Gasket, Bowl Strainer Plug.....	201677	1
61	Plug and Gasket Assembly, Bowl Strainer.....	201676	1
62	Air Horn Assembly.....	201730	1
	Air Horn and Climatic Control Assembly.....	201729	1
63	Screw and Washer, Choke Body to Main Body.....	201653	2
64	Cover, Dust.....	201733	1
	Rivet Plug.....	201750	1
	Rivet Plug, Idle Passage.....	201724	1
	Gasket, Float Needle Seat.....	201679	3
	Gasket, Metering Rod Jet.....	201684	3
	Spring, Throttle Connector Rod.....	201720	1
	Retainer, Throttle Connector Rod Spring.....	202383	1
	Spring, Anti-Percolator Rocker Arm.....	201699	1
	Pin, Anti-Percolator Rocker Arm.....	201698	1
	Arm and Cap Assembly, Anti-Percolator Rocker.....	201697	1
60-20	Gasket Assortment.....	201756	1
60-19	Repair Kit.....	204105	1
	Stud, Carburetor Mounting.....	200322	2
	Lockwasher, Carburetor Mounting.....	291	2
	Nut, Carburetor Mounting.....	290	2
	Gasket, Carburetor to Manifold.....	200437	1

†For component parts see Group 60.3

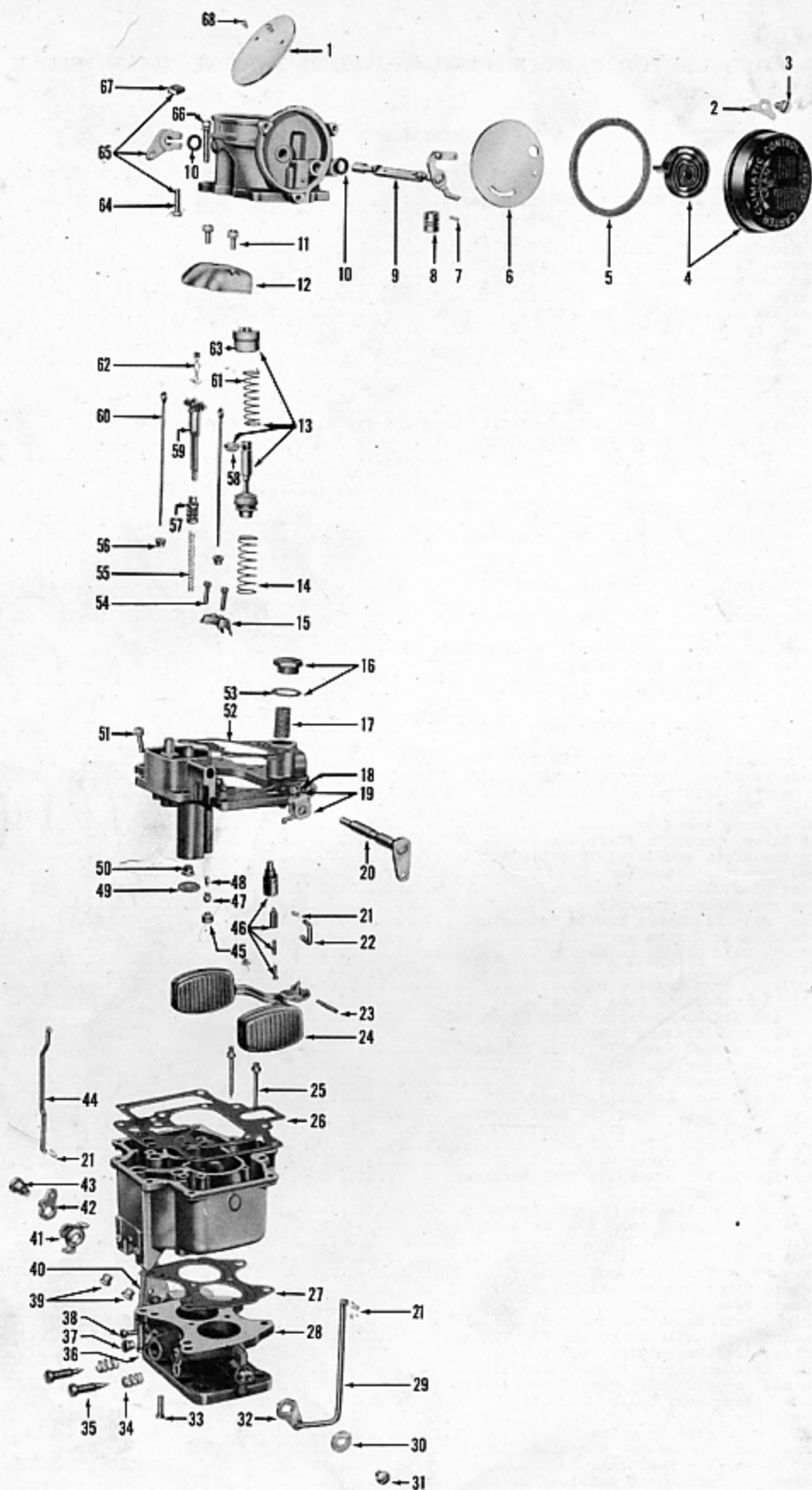


FIGURE 3-5 — CARBURETOR, CARTER MODEL WCD-685SA, PART NO. 203354, DUAL MANIFOLD ENGINES

Group 3.660

FIGURE 3-5 — CARBURETOR, CARTER MODEL WCD-685SA, PART NO. 203354, DUAL MANIFOLD ENGINES

KEY	PART NAME	PART NO.	QTY.
1	Valve, Choke.....	203758	1
2	Retainer, Climatic Control Housing.....	203779	3
3	Screw, Climatic Control Housing.....	203815	3
4	Housing and Coil Assembly, Climatic Control.....	203807	1
5	Gasket, Climatic Control Housing.....	203821	1
6	Baffle Plate, Climatic Control.....	203809	1
7	Pin, Choke Piston.....	201661	1
8	Piston, Choke.....	201660	1
9	Lever, Link and Shaft Assembly, Choke Piston.....	203763	1
10	Washer, Choke Shaft.....	203820	2
11	Screw and Washer, Dust Cover.....	203789	2
12	Cover, Dust.....	203787	1
13	Plunger, Rod, Spring and Retainer Assembly, Pump.....	203782	1
14	Spring, Pump, Lower.....	203776	1
15	Jet and Housing Assembly, Pump.....	203771	1
16	Plug and Gasket Assembly, Strainer.....	201676	1
17	Strainer, Bowl.....	201675	1
18	Screw, Metering Rod Arm Clamp.....	203790	1
19	Arm Assembly, Pump and Metering Rod.....	203792	1
20	Lever and Countershaft Assembly, Pump Operating.....	203812	1
21	Pin Spring.....	201687	3
22	Link, Pump.....	203795	1
23	Pin, Float Lever Fulcrum.....	203767	1
24	Float and Lever Assembly.....	203766	1
25	Jet Assembly, Low Speed.....	203759	2
26	Gasket, Bowl Cover.....	203801	1
27	Gasket, Body Flange.....	203799	1
28	Body Flange Assembly.....	203754	1
29	Connector Rod, Throttle.....	203819	1
30	Washer, Throttle Shaft Dog.....	203805	1
31	Screw, Throttle Shaft Dog.....	203785	1
32	Dog, Throttle Lever.....	203793	1
33	Screw, Fast Idle Adjustment.....	203786	1
34	Spring, Idle Adjustment Screw.....	201668	2
35	Screw, Idle Adjustment.....	203770	2
36	Screw and Washer, Body Flange to Main Body.....	203787	4
37	Rivet Plug, Idle Port.....	201724	2
38	Screw, Throttle Lever Adjustment.....	203211	1
39	Plug, Nozzle Passage.....	203761	2
40	Shaft and Lever Assembly, Throttle.....	203756	1
41	Cam Assembly, Fast Idle.....	203808	1
42	Trip Lever, Cam.....	203764	1
43	Screw, Fast Idle Cam.....	203816	1
44	Connector Rod, Fast Idle.....	203794	1
45	Plug and Gasket Assembly, Pump Discharge Passage.....	203760	1
46	Needle and Seat Assembly.....	203768	1
47	Plug, Pump Discharge Check.....	203802	1
48	Check Needle, Pump Discharge.....	203811	1
49	Strainer, Pump.....	203769	1
50	Disc Check Assembly, Intake.....	203803	1
51	Screw and Washer, Bowl Cover.....	203818	6
52	Gasket, Air Horn.....	203800	1
53	Gasket, Bowl Strainer Plug.....	201677	1
54	Screw and Washer, Pump Jet.....	203788	2
55	Spring, Vacuum Piston.....	203777	1
56	Jet and Gasket Assembly, Metering Rod.....	203798	2
57	Piston and Pin Assembly, Vacuum.....	201714	1
58	Retainer, Pump Spring.....	203780	1
59	Link, Vacuum Piston.....	203796	1
60	Metering Rod, Standard.....	203783	2
	Metering Rod, 1st Lean.....	203851	2
	Metering Rod, 2nd Lean.....	203852	2
61	Spring, Pump, Upper.....	203778	1
62	Spring, Metering Rod.....	203773	1
63	Guide, Pump Plunger.....	203810	1
64	Screw, Choke Lever Clamp.....	203784	1
65	Lever and Screw Assembly, Choke.....	203762	1
66	Screw and Washer, Air Horn to Bowl Cover.....	203817	4
67	Nut, Choke Lever Clamp.....	203791	1
68	Screw, Choke Valve.....	201670	2
	Throttle Valve.....	203755	2
	Screw, Throttle Valve.....	203814	4
	Air Horn and Climatic Control Assembly.....	203757	1
	Rivet Plug.....	201750	2
	Rivet Plug.....	201723	3
	Gasket, Needle Seat.....	201679	1
	Gasket, Pump Discharge Passage Plug.....	201684	1
	Gasket, Metering Rod Jet.....	203765	2
	Spring, Fast Idle Cam.....	203774	1
	Spring, Plunger.....	203775	1
	Retainer, Connector Rod Spring.....	202383	1
	Retaining Ring, Throttle Shaft.....	203781	1
	Screw, Pump Retainer.....	203813	1
	Washer, Connector Rod.....	203804	1
60-21†	Gasket Assortment.....	203849	1
60-22†	Repair Kit.....	203850	1
	Stud, Carburetor Mounting.....	203448	4
	Lockwasher, Carburetor Mounting.....	240	4
	Nut, Carburetor Mounting.....	189	4
	Gasket, Carburetor to Manifold.....	203355	1

†For component parts see Group 60.3

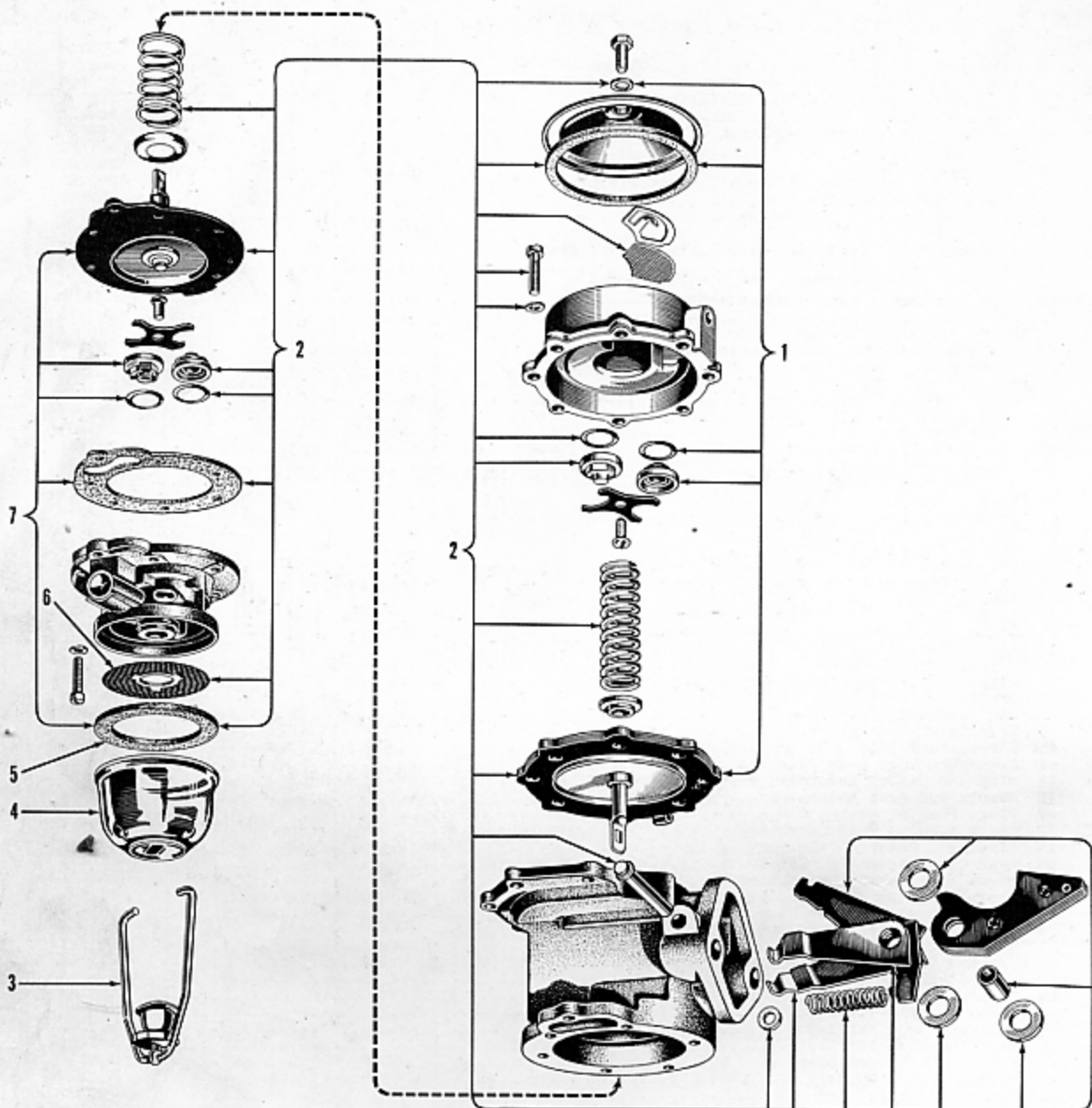


FIGURE 3-6 — TYPICAL FUEL AND VACUUM PUMP - EXPLODED VIEW

KEY	PART NAME	GROUP	KEY	PART NAME	GROUP
1	Diaphragm Kit (Vacuum).....	3.500	5	Gasket.....	3.490
2	Repair Kit.....	3.480	6	Screen.....	3.490
3	Bail.....	3.490	7	Diaphragm Kit (Fuel).....	3.500
4	Bowl.....	3.490			

FUEL

3

FIGURE NUMBER	GROUP, PART NAME and DESCRIPTION	PART NUMBER	MODELS	BODY STYLES				
				4-DR. SEDAN	CONV.	VIRGINIAN	UTILITY	TAXICAB
				1	2	3	5	6
3.000 - INTAKE MANIFOLD								
3-1-8	Manifold (Dual)	203351	All	1	1	1	1	1
	Manifold (Single).....	200274	491,495	1			1	
3-1-5	Stud (to Block).....	203611	All	8	8	8	8	8
	Stud (to Exhaust Manifold) (Dual Manifold).....	203448	All	4	4	4	4	4
	Stud (to Exhaust Manifold) (Single Manifold).....	200276	491,495	4			4	
	Retainer (Dual Manifold).....	203352	All	8	8	8	8	8
	Retainer (Single Manifold).....	200277	491,495	8			8	
3-1-25	Flatwasher (to Intake Manifold).....	200059	All	4	4	4	4	4
3-1-24	Nut (to Exhaust Manifold) (Dual Manifold).....	203353	All	4	4	4	4	4
	Nut (to Exhaust Manifold) (Single Manifold).....	200278	491,495	12			12	
3-1-3	Gasket (to Block).....	200279	All	1	1	1	1	1
3-1-9	Gasket (to Exhaust Manifold) (Dual Manifold).....	203376	All	1	1	1	1	1
	Gasket (to Exhaust Manifold) (Single Manifold).....	200319	491,495	1			1	
3.010 - CARBURETOR CHOKE TUBE								
3-3-18	Tube (used with Dual Manifold).....	203356	All	1	1	1	1	1
	Tube (used with Single Manifold).....	202413	491,495	1			1	
	Sleeve, 1/4" Tube.....	202130	All	1	1	1	1	1
	Nut, 7/16"-24 Hx. x 1/4" Tube.....	202131	All	1	1	1	1	1
3.070 - ACCELERATOR PEDAL								
3-2-10	Pedal (Black).....	201907	All	1	1	1	1	1
3-2-10	Pedal (Hickory Brown).....	204797	All	1	1	1	1	1
3-2-10	Pedal (Solar Gray).....	204798	All	1	1	1	1	1
3-2-10	Pedal (Emblem Blue).....	204799	492,495,496	1		1		
3-2-10	Pedal (Maroon).....	204800	492,495,496	1				
3-2-10	Pedal (Crystal Green).....	204801	All	1	1	1	1	1
3-2-10	Pedal (Teal Blue).....	204802	492,495,496	1		1		
3-2-11	Bracket (to Floor).....	203307	All	1	1	1	1	1
3-2-20	Boot.....	201908	All	1	1	1	1	1
3.075 - ACCELERATOR LINKAGE REPAIR KIT								
†	Repair Kit (Single Manifold).....	206400	491,495	1			1	
60-6 †	Repair Kit (Dual Manifold).....	206401	492,495,496	1	1	1	1	1
3.080 - ACCELERATOR PEDAL TO BELL CRANK ROD								
3-2-19	Rod.....	203357	All	1	1	1	1	1
3-2-18	Clip.....	203445	All	1	1	1	1	1
3.090 - ACCELERATOR BELL CRANK								
3-2-13	Bell Crank (Dual Manifold).....	203358	All	1	1	1	1	1
	Bell Crank (Single Manifold).....	203593	491,495	1			1	
3-2-14	Clevis Pin, 5/16" x 31/32".....	416	All	1	1	1	1	1
3-2-16	Cotter Pin, 3/32" x 1/2".....	414	All	1	1	1	1	1
3-2-15	Bracket, Lower.....	206086	All	1	1	1	1	1
3.400 - ACCELERATOR LINKAGE TENSION SPRING								
3-2-12	Spring.....	201902	All	1	1	1	1	1

† For Component Parts SEE Group 60.3

FUEL

FIGURE NUMBER	GROUP, PART NAME and DESCRIPTION	PART NUMBER	MODELS	BODY STYLES					
				4-DR. SEDAN	CONV.	VIRGINIAN	UTILITY	TAMICAB	
				1	2	3	5	6	
3.410 - ACCELERATOR BELL CRANK LINK ROD									
3-2-21	Rod (L.H.D.).....	204803	All	1	1	1	1	1	
3-2-18	Clip, Upper.....	203445	All	1	1	1	1	1	
3-2-17	Clip, Lower.....	200484	All	1	1	1	1	1	
	Rod (R.H.D.).....	203594	491,495	1					
	Clip.....	203445	491,495	2					
3-2-4	Lever (W/OD) (L.H.D.).....	203359	492,495,496	1	1	1	1		
3-2-5	Lever.....	203365	All	1	1	1	1	1	
3-2-3	Bolt, 1/4"-28 x 1 1/4" Hx. Hd.....	634	All	1	1	1	1	1	
3-2-6	Flatwasher, 1/4" Sm.....	243	All	2	2	2	2	2	
3-2-7	Nut, 1/4"-28 Hx.....	261	All	1	1	1	1	1	
3.430 - ACCELERATOR CROSS SHAFT									
3-2-25	Shaft (L.H.D.).....	204804	All	1	1	1	1	1	
	Shaft (R.H.D.).....	203595	491,495	1					
3-2-23	Bearing.....	203362	All	2	2	2	2	2	
3-2-24	Bracket (less Bearing).....	203363	All	2	2	2	2	2	
3-2-3	Bolt, 1/4"-20 x 1/2" Hx. Hd.....	179	All	4	4	4	4	4	
3-2-22	Lockwasher, 1/4" Med.....	190	All	4	4	4	4	4	
	Spring (between Bearing and Lever).....	206022	All	1	1	1	1	1	
	Lever, Overdrive Kickdown Switch (R.H.D.).....	203596	491,495	1					
	Bolt, 1/4"-28 x 1 1/4" Hx. Hd.....	634	491,495	1					
	Flatwasher, 1/4" Sm.....	243	491,495	1					
	Nut, 1/4"-28 Hx. Lt.....	261	491,495	1					
3.440 - ACCELERATOR CROSS SHAFT TO CARBURETOR EXTENSION SHAFT LEVER									
3-2-5	Lever.....	203365	All	1	1	1	1	1	
3-2-3	Bolt, 1/4"-28 x 1 1/4" Hx. Hd.....	634	All	1	1	1	1	1	
3-2-6	Flatwasher, 1/4" Sm.....	243	All	2	2	2	2	2	
3-2-7	Nut, 1/4"-28 Hx. Lt.....	261	All	1	1	1	1	1	
3.450 - CARBURETOR EXTENSION SHAFT									
3-2-39	Shaft (Dual Manifold).....	203366	All	1	1	1	1	1	
3-2-17	Clip.....	200484	All	1	1	1	1	1	
3-2-36	Swivel (Dual Manifold).....	203367	All	1	1	1	1	1	
3-2-35	Locknut, 1/4"-28 Hx.....	635	All	1	1	1	1	1	
3-2-33	Spring (Dual Manifold).....	203368	All	1	1	1	1	1	
3-2-43	Flatwasher, 1/4" Sm.....	243	All	1	1	1	1	1	
3-2-31	Cotter Pin, 1/16" x 7/16".....	452	All	1	1	1	1	1	
3-2-26	Rod (Cross Shaft Lever to Bell Crank) (Single Manifold) (L.H.D.).....	204805	491	1			1		
	Rod (Cross Shaft Lever to Bell Crank) (Single Manifold) (R.H.D.).....	204806	491,495	1					
3-2-18	Clip (to Bell Crank).....	203445	491,495	1			1		
3-2-17	Clip (to Cross Shaft Lever).....	200484	491,495	1			1		
3-2-32	Bell Crank (Single Manifold) (L.H.D.).....	204807	491	1			1		
	Bell Crank (Single Manifold) (R.H.D.).....	204808	491,495	1					
3-2-29	Stud, Pivot.....	204809	491,495	1			1		
3-2-28	Flatwasher, 3/8" Sm.....	247	491,495	1			1		
3-2-27	Cotter Pin, 3/32" x 3/4".....	139	491,495	1			1		

FUEL

3

FIGURE NUMBER	GROUP, PART NAME and DESCRIPTION	PART NUMBER	MODELS	BODY STYLES				
				4-DR. SEDAN	CONV.	VIRGINIAN	UTILITY	TAXICAB
				1	2	3	5	6
3.450 - CARBURETOR EXTENSION SHAFT (Cont'd)								
3-2-30	Rod (Bell Crank to Connector) (Single Manifold).....	204810	491,495	1			1	
3-2-17	Clip.....	200484	491,495	1			1	
3-2-36	Swivel (Single Manifold).....	203367	491,495	1			1	
3-2-35	Locknut, 1/4"-28 Hx.....	635	491,495	1			1	
3-2-33	Spring (Single Manifold).....	203368	491,495	1			1	
	Flatwasher, 1/4" Sm.....	243	491,495	1			1	
3-2-31	Cotter Pin, 1/16" x 7/16".....	452	491,495	1			1	
3.460 - CARBURETOR EXTENSION SHAFT CONNECTOR								
3-2-42	Connector (used with Dual Manifold).....	203369	All	1	1	1	1	1
3-2-40	Screw, No. 10-32 x 3/8" Rd. Hd. Sl.....	283	All	2	2	2	2	2
3-2-41	Lockwasher, No. 10 Med.....	254	All	2	2	2	2	2
3-2-34	Connector (used with Single Manifold).....	204811	491,495	1			1	
3-2-38	Screw, No. 8-32 x 5/16" Rd. Hd. Sl.....	251	491,495	2			2	
3-2-37	Lockwasher, No. 8 Med.....	253	491,495	2			2	
3.470 - FUEL PUMP								
1-1-61	Pump, Fuel and Vacuum.....	202319	All	1	1	1	1	1
	Stud, 5/16"-18 x 1 3/4".....	202010	All	2	2	2	2	2
	Lockwasher, 5/16" Hy.....	191	All	2	2	2	2	2
	Nut, 5/16"-18 Hx.....	205	All	2	2	2	2	2
1-1-60	Gasket (Pump to Block).....	200283	All	1	1	1	1	1
3.480 - FUEL PUMP REPAIR KIT								
3-6-2 †	Repair Kit.....	202877	All	*	*	*	*	*
3.490 - FUEL PUMP BOWL								
3-6-4	Bowl.....	201577	All	1	1	1	1	1
3-6-5	Gasket.....	201578	All	1	1	1	1	1
3-6-6	Screen.....	201579	All	1	1	1	1	1
3-6-3	Bail (incl. Screw, Nut and Seat).....	203260	All	1	1	1	1	1
3.500 - FUEL PUMP DIAPHRAGM KIT								
3-6-7 †	Diaphragm Kit (Fuel Side).....	201785	All	*	*	*	*	*
3-6-1 †	Diaphragm Kit (Vacuum Side).....	202876	All	*	*	*	*	*
60-11 †	Diaphragm Kit (Export only) (for use with Alcohol Base Fuel).....	203345	All	*	*	*	*	*
3.520 - FUEL TANK								
3-3-11	Tank.....	200457	All	1	1	1	1	1
3-3-31	Bolt, 3/8"-24 x 1 1/4" Carriage.....	200446	All	3	3	3	3	3
3-3-30	Spacer.....	200458	All	3	3	3	3	3
3-3-29	Locknut, 3/8"-24 Hx.....	202257	All	3	3	3	3	3
3-3-28	Plug, Drain, 1/4" Pipe Hx. Hd.....	256	All	1	1	1	1	1
3-3-3	Cap.....	200460	All	1	1	1	1	1

* As required † For Component Parts SEE Group 60.3

FUEL

FIGURE NUMBER	GROUP, PART NAME and DESCRIPTION	PART NUMBER	MODELS	BODY STYLES					
				4-DR. SEDAN	CONV.	VIRGINIAN	UTILITY	TAXICAB	
				1	2	3	5	6	
	3.530 - FUEL TANK FILLER TUBE								
3-3-6	Tube (incl. Clamp).....	200461	All	1	1	1	1	1	
3-3-4	Bolt, 1/4"-28 x 7/8" Hx. Hd.....	303	All	1	1	1	1	1	
3-3-7	Lockwasher, 1/4" Med.....	190	All	1	1	1	1	1	
3-3-8	Nut, 1/4"-28 Hx.....	261	All	1	1	1	1	1	
3-3-5	Insulator.....	201924	All	1	1	1	1	1	
3-3-10	Hose, 2 1/4" Diam. x 3".....	200462	All	1	1	1	1	1	
3-3-9	Clamp, 2 5/8" Diam.....	202129	All	2	2	2	2	2	
	3.535 - FUEL TANK FILLER VENT ALARM								
	Alarm.....	205814	491						1
	3.550 - FUEL TANK TO FUEL PUMP LINE								
3-3-12	Tube (148" Roll) (incl. Nuts).....	205384	All	1	1	1	1	1	
3-3-21	Tube (54" Roll) (incl. Nuts).....	205385	All	1	1	1	1	1	
3-3-19	Union, 1/2"-20 Pipe x 5/16" Inv. Fl. Tube..	205391	All	1	1	1	1	1	
	Nut, 1/2"-20 Hx. x 5/16" Inv. Fl. Tube....	202133	All	2	2	2	2	2	
3-3-20	Clip (Union to Frame).....	205311	All	1	1	1	1	1	
	Bolt, 5/16"-12 x 5/8" Hx. Hd.....	284	All	1	1	1	1	1	
3-3-27	Clip, 5/16" Tube.....	201544	All	7	7	7	7	7	
3-3-26	Fitting (on Frame).....	200464	All	1	1	1	1	1	
	Clip.....	205311	All	1	1	1	1	1	
	Bolt, 5/16"-12 x 5/8" Hx. Hd.....	284	All	1	1	1	1	1	
	Lockwasher, 5/16" Med.....	240	All	1	1	1	1	1	
3-3-13	Tube, Fitting to Fuel Pump (Flexible).....	205254	All	1	1	1	1	1	
3-3-14	Elbow, 1/8" Pipe.....	201823	All	1	1	1	1	1	
	3.560 - FUEL PUMP LINES								
	Tube, Pump to Carb. (incl. Nuts) (Single Manifold).....	202878	491,495	1			1		
3-3-22	Tube, Pump to Carb. (incl. Nuts) (Dual Manifold).....	203370	All	1	1	1	1	1	
	Nut, 1/2"-20 Hx. x 5/16" Inv. Fl. Tube....	202133	All	2	2	2	2	2	
3-3-23	Elbow (Pump Outlet).....	202137	All	1	1	1	1	1	
	Connector (Carb. Inlet) 1/2"-20 x 1/8" Pipe 45° x 5/16" Inv. Fl. Tube.....	202880	All	1	1	1	1	1	
	Tube, Vacuum Pump to Manifold (Single Manifold).....	202879	491,495	1			1		
3-3-25	Tube, Vacuum Pump to Manifold (Dual Manifold).....	203371	All	1	1	1	1	1	
	Nut, 1/2"-20 Hx. x 5/16" Inv. Fl. Tube....	202133	All	2	2	2	2	2	
	Elbow (Pump Outlet) 7/16"-24 x 1/8" Pipe 90° x 1/4" Inv. Fl. Tube.....	202123	All	1	1	1	1	1	
	Connector (Manifold Outlet) 7/16"-24 x 1/8" Pipe 1/4" Inv. Fl. Tube.....	202125	All	1	1	1	1	1	
3-3-24	Tube, Vacuum Pump to W/S Wiper (incl. Nuts) (10 1/2" Long).....	203568	All	1	1	1	1	1	
	Nut, 1/2"-20 Hx. x 5/16" Inv. Fl. Tube....	202133	All	2	2	2	2	2	
	Connector, 7/16"-24 x 1/8" Pipe 1/4" Inv. Fl. Tube.....	202125	All	1	1	1	1	1	
	Clip.....	200317	All	1	1	1	1	1	
	Tube, Vacuum Pump to W/S Wiper (incl. Nuts) (28" Long).....	205694	All	1	1	1	1	1	

FUEL

FIGURE NUMBER	GROUP, PART NAME and DESCRIPTION	PART NUMBER	MODELS	BODY STYLES				
				4-DR. SEDAN	CONV.	VIRGINIAN	UTILITY	TAXICAB
				1	2	3	5	6
3.560 - FUEL PUMP LINES (Cont'd)								
	Nut, 1/2"-20 Hx. x 5/16" Inv. Fl. Tube.....	202133	A11	1	1	1	1	1
	Connector, 7/16"-24 x 1/8" Pipe 1/4" Inv. Fl. Tube.....	202125	A11	1	1	1	1	1
	Clip (to Manifold End Stud).....	205697	A11	1	1	1	1	1
	Lockwasher, 3/8" Ext. tooth.....	291	A11	1	1	1	1	1
	Nut, 3/8"-16 Hx.....	204	A11	1	1	1	1	1
3.580 - FUEL GAUGE-TANK UNIT								
3-3-1	Gauge (L.H.D.).....	205507	495,496	1	1			
	Gauge (L.H.D.).....	201546	491,492	1	1	1	1	1
	Gauge (R.H.D.).....	201546	491,495	1				
	Screw, No. 10-32 x 7/16" Rd. Hd. Cr. Rec...	539	A11	6	6	6	6	6
	Flatwasher, No. 10.....	200469	A11	6	6	6	6	6
	Screw, Terminal, No. 8-32 x 1/4" Rd. Hd. Sl..	310	A11	1	1	1	1	1
	Lockwasher, No. 8 Int. Tooth.....	273	A11	1	1	1	1	1
	Nut, No. 8-32 Hx.....	272	A11	1	1	1	1	1
3-3-2	Gasket.....	200470	A11	1	1	1	1	1
3.590 - FUEL GAUGE COVER								
	Cover (in Rear Floor Pan).....	200544	A11	1	1	1	1	1
	Screw, No. 14-10 x 1/2" Rd. Hd. Sl.....	383	A11	2	2	2	2	2
	Gasket.....	202709	A11	1	1	1	1	1
	Filler (Rubber).....	202414	A11	1	1	1	1	1