

FIGURE 12-1 — TYPICAL REAR AXLE AND DIFFERENTIAL - EXPLODED VIEW

FIGURE 12-1 — TYPICAL REAR AXLE AND DIFFERENTIAL - EXPLODED VIEW

KEY	PART NAME	GROUP	KEY	PART NAME	GROUP
1	Plug, Grease Fitting.....	12.005	25	Key, Shaft.....	12.080
2	Housing Assembly.....	12.005	26	Nut, Shaft.....	12.080
3	Cotter Pin.....	11.020	27	Flatwasher, Shaft.....	12.080
4	Nut.....	11.020	28	Bearing Cup, Shaft.....	12.080
5	Flatwasher.....	11.020	29	Bearing Cone, Shaft.....	12.080
6	Oil Seal, Drive Pinion Bearing.....	12.060	30	Shaft.....	12.080
7	Gasket, Drive Pinion Bearing Oil Seal.....	12.060	31	Gasket, Housing Cover.....	12.005
8	Oil Slinger, Drive Pinion Bearing.....	12.060	32	Cover, Housing.....	12.005
9	Bearing Cone, Drive Pinion, Front.....	12.050	33	Plug, Housing Filler.....	12.005
10	Bearing Cup, Drive Pinion, Front.....	12.050	34	Bolt.....	12.005
11	Oil Seal, Shaft Outer.....	12.080	35	Lockwasher.....	12.005
12	Gasket, Shaft Oil Seal.....	12.080	36	Thrustwasher, Side Gear.....	12.020
13	Retainer, Shaft Bearing.....	12.080	37	Thrust Block, Shaft.....	12.020
14	Shim, Shaft Bearing Adjusting.....	12.080	38	Lockpin, Differential Pinion Gear Shaft.....	12.020
15	Oil Seal, Shaft Inner.....	12.080	39	Shaft, Differential Pinion Gear.....	12.020
16	Shim, Drive Pinion Bearing Adjusting, Front.....	12.050	40	Thrustwasher, Side Pinion.....	12.020
17	Spacer, Drive Pinion Bearing.....	12.060	41	Gear and Pinion Kit.....	12.020
18	Plug, Housing Drain.....	12.005	42	Bearing Cup, Differential.....	12.035
19	Shim, Drive Pinion Bearing Adjusting, Rear.....	12.060	43	Bearing Cone, Differential.....	12.035
20	Lockwasher.....	12.015	44	Shim, Differential Bearing Adjusting.....	12.035
21	Bolt.....	12.015	45	Lockplate.....	12.045
22	Bearing Cup, Drive Pinion.....	12.060	46	Bolt.....	12.045
23	Bearing Cone, Drive Pinion.....	12.060	47	Case, Differential.....	12.015
24	Gear and Pinion Set.....	12.045			

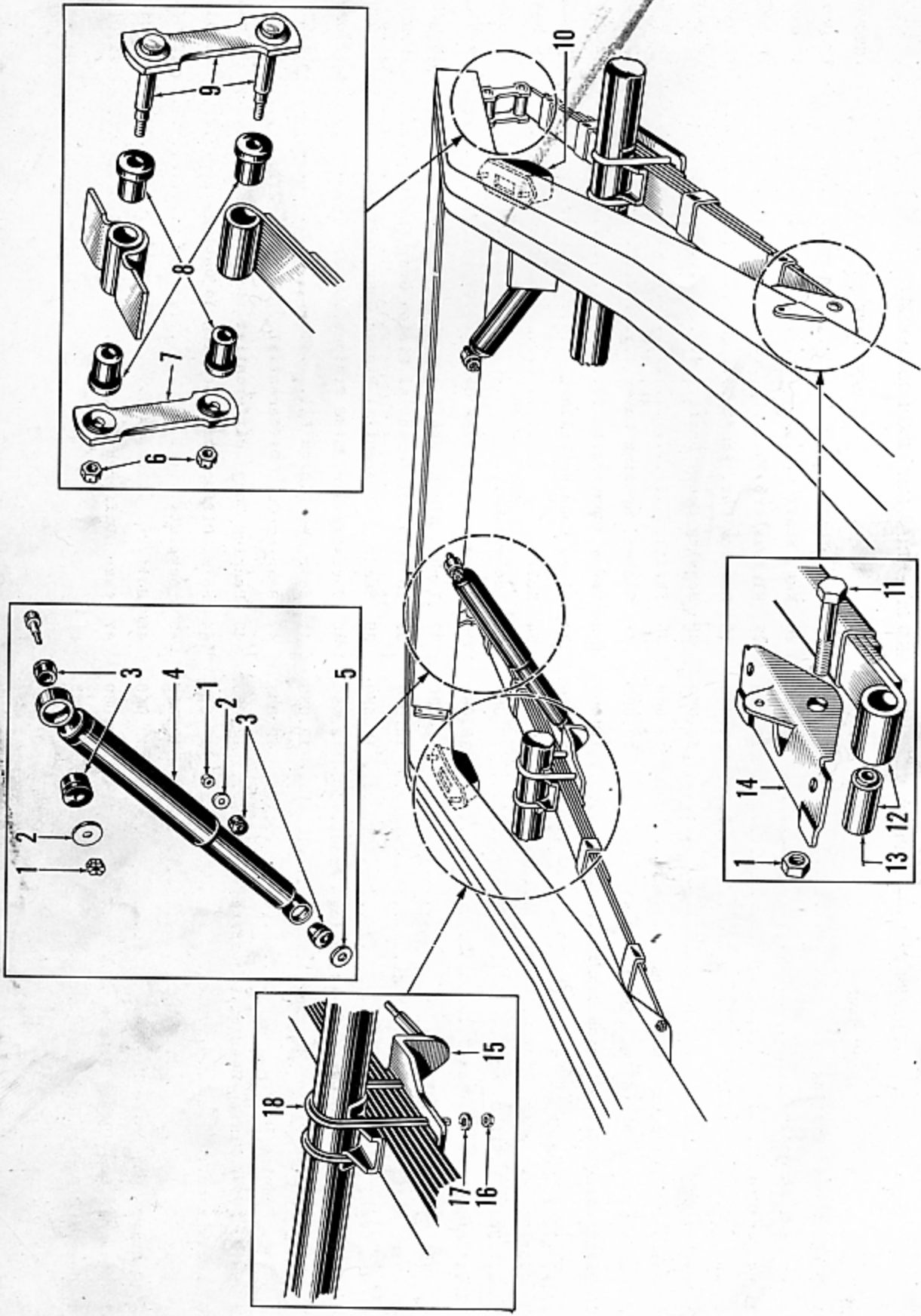


FIGURE 12-2 — TYPICAL REAR SUSPENSION

FIGURE 12-2 — TYPICAL REAR SUSPENSION

KEY	PART NAME	GROUP	KEY	PART NAME	GROUP
1	Locknut, Rear Shock Absorber.....	20.010	10	Bumper, Rear Spring (or Axle).....	12.230
2	Flatwasher, Rear Shock Absorber, Inner.....	20.010	11	Bolt, Rear Spring Front.....	12.200
3	Bushing, Rear Shock Absorber.....	20.010	12	Spring Assembly, Rear.....	12.200
4	Shock Absorber, Rear.....	20.010	13	Bushing, Rear Spring Front Hanger.....	12.200
5	Flatwasher, Rear Shock Absorber, Outer.....	20.010	14	Hanger, Rear Spring Front.....	12.200
6	Locknut, Rear Spring Shackle.....	12.220	15	Plate, Rear Spring Mounting, Right.....	12.215
7	Link (Serviced Only in Shackle and Link Kit)....	12.220	16	Nut, Rear Spring "U" Bolt.....	12.215
8	Bushing, Rear Spring Shackle.....	12.220	17	Lockwasher, Rear Spring "U" Bolt.....	12.215
9	Shackle (Serviced Only in Shackle and Link Kit).	12.220	18	"U" Bolt.....	12.215

## REAR AXLE and SUSPENSION

FIGURE NUMBER	GROUP, PART NAME and DESCRIPTION	PART NUMBER	MODELS	BODY STYLES					
				4-DR. SEDAN	CONV.	VIRGINIAN	UTILITY	TAXICAB	
				1	2	3	5	6	
	<b>12.000 - REAR AXLE</b>								
	Rear Axles as listed are less Brakes and Backing Plates.								
	Rear Axle, 3.73 Ratio (60" Tread).....	202312	All	1					
	Rear Axle, 3.91 Ratio (60" Tread).....	204368	All	1	1	1		1	
	Rear Axle, 3.91 Ratio (58 3/4" Tread).....	206383	All	1	1	1	1	1	
	Rear Axle, 4.09 Ratio (60" Tread).....	201875	All	1	1	1		1	
	Rear Axle, 4.09 Ratio (58 3/4" Tread).....	206378	All	1	1	1	1	1	
	Rear Axle, 4.27 Ratio (60" Tread).....	200367	All	1	1	1		1	
	Rear Axle, 4.27 Ratio (58 3/4" Tread).....	206384	All	1	1	1	1	1	
	Rear Axle, 4.55 Ratio (60" Tread).....	205562	All	1	1	1		1	
	Rear Axle, 4.55 Ratio (58 3/4" Tread).....	206555	All	1	1	1	1	1	
	<b>12.005 - REAR AXLE HOUSING</b>								
	12-1-2 Housing (60" Axle).....	200368	All	1	1	1		1	
	12-1-2 Housing (58 3/4" Axle).....	206379	All	1	1	1	1	1	
	12-1-18 Plug, Drain, 3/4"-14 Hd'ls. Ct'sk.....	339	All	1	1	1	1	1	
	12-1-1 Plug, Grease Fitting, 1/8"-27 Pipe Sl. Hd'ls.	527	All	2	2	2	2	2	
	12-1-32 Cover.....	200369	All	1	1	1	1	1	
	12-1-34 Bolt, 3/8"-16 x 5/8" Hx. Hd.....	200370	All	10	10	10	10	10	
	12-1-35 Lockwasher, 3/8" Med.....	192	All	10	10	10	10	10	
	12-1-31 Gasket.....	200371	All	1	1	1	1	1	
	12-1-33 Plug, Filler.....	338	All	1	1	1	1	1	
	<b>12.015 - REAR AXLE DIFFERENTIAL CASE</b>								
	12-1-47 Case.....	200388	All	1	1	1	1	1	
	12-1-47 Case (4.55 Axle Only).....	205654	All	1	1	1	1	1	
	12-1-21 Bolt, 1/2"-13 x 2 1/4" Hx. Hd.....	200396	All	4	4	4	4	4	
	12-1-20 Lockwasher, 1/2" Int..Tooth.....	528	All	4	4	4	4	4	
	<b>12.020 - REAR AXLE DIFFERENTIAL GEAR AND PINION KIT</b>								
	12-1-41† Gear and Pinion Kit.....	202052	All	1	1	1	1	1	
	12-1-36 Thrustwasher, Side Gear.....	200399	All	2	2	2	2	2	
	12-1-40 Thrustwasher, Side Pinion.....	200401	All	2	2	2	2	2	
	12-1-39 Shaft, Pinion Gear.....	200402	All	1	1	1	1	1	
	12-1-38 Lockpin.....	200403	All	1	1	1	1	1	
	12-1-37 Thrustblock.....	200377	All	1	1	1	1	1	
	<b>12.035 - REAR AXLE DIFFERENTIAL BEARING</b>								
	12-1-43 Bearing Cone.....	200390	All	2	2	2	2	2	
	12-1-42 Bearing Cup.....	200389	All	2	2	2	2	2	
	12-1-44 Shim, .003.....	200391	All	*	*	*	*	*	
	12-1-44 Shim, .005.....	200392	All	*	*	*	*	*	
	12-1-44 Shim, .010.....	200393	All	*	*	*	*	*	
	12-1-44 Shim, .030.....	200394	All	*	*	*	*	*	

\* As required

† For Component Parts See Group 60.12

# REAR AXLE and SUSPENSION

FIGURE NUMBER	GROUP, PART NAME and DESCRIPTION	PART NUMBER	MODELS	BODY STYLES					
				4-DR. SEDAN	CONV.	VIRGINIAN	UTILITY	TAXICAB	
				1	2	3	5	6	
<b>12.045 - REAR AXLE DRIVE GEAR AND PINION</b>									
12-1-24	Gear and Pinion, 3.73 Ratio (41 T. Gear, 11 T. Pinion).....	202518	All	1					
12-1-24	Gear and Pinion, 3.91 Ratio (43 T. Gear, 11 T. Pinion).....	204367	All	1	1	1	1	1	1
12-1-24	Gear and Pinion, 4.09 Ratio (45 T. Gear, 11 T. Pinion).....	202089	All	1	1	1	1	1	1
12-1-24	Gear and Pinion, 4.27 Ratio (47 T. Gear, 11 T. Pinion).....	200404	All	1	1	1	1	1	1
12-1-24	Gear and Pinion, 4.55 Ratio (50 T. Gear, 11 T. Pinion).....	205655	All	1	1	1	1	1	1
12-1-46	Bolt.....	200405	All	10	10	10	10	10	10
12-1-45	Lockplate.....	200406	All	5	5	5	5	5	5
<b>12.050 - REAR AXLE DRIVE BEARING-FRONT</b>									
12-1-9	Bearing Cone.....	200418	All	1	1	1	1	1	1
12-1-10	Bearing Cup.....	200417	All	1	1	1	1	1	1
12-1-16	Shim, .003.....	200413	All	*	*	*	*	*	*
12-1-16	Shim, .005.....	200414	All	*	*	*	*	*	*
12-1-16	Shim, .010.....	200415	All	*	*	*	*	*	*
12-1-16	Shim, .030.....	200416	All	*	*	*	*	*	*
<b>12.060 - REAR AXLE DRIVE PINION BEARING-REAR</b>									
12-1-23	Bearing Cone.....	200411	All	1	1	1	1	1	1
12-1-22	Bearing Cup.....	200410	All	1	1	1	1	1	1
12-1-19	Shim, .003.....	200407	All	*	*	*	*	*	*
12-1-19	Shim, .005.....	200408	All	*	*	*	*	*	*
12-1-19	Shim, .010.....	200409	All	*	*	*	*	*	*
12-1-6	Oil Seal.....	200420	All	1	1	1	1	1	1
12-1-8	Slinger.....	200419	All	1	1	1	1	1	1
12-1-7	Gasket.....	200421	All	1	1	1	1	1	1
12-1-17	Spacer.....	200412	All	1	1	1	1	1	1
<b>12.080 - REAR AXLE SHAFT</b>									
12-1-30	Shaft (31 5/8" Long).....	200373	All	2	2	2			2
12-1-30	Shaft (31" Long).....	206380	All	2	2	2	2	2	2
12-1-25	Key.....	200374	All	2	2	2	2	2	2
12-1-27	Flatwasher, 1 1/32" x 1 5/16" x 1/8".....	200376	All	2	2	2	2	2	2
12-1-26	Nut, 1"-14 Hx. Sl.....	200375	All	2	2	2	2	2	2
12-1-3	Cotter Pin, 1/8" x 1 1/2".....	341	All	2	2	2	2	2	2
12-1-15	Oil Seal, Inner.....	200378	All	2	2	2	2	2	2
12-1-37	Thrustblock.....	200377	All	1	1	1	1	1	1
12-1-29	Bearing Cone.....	200380	All	2	2	2	2	2	2
12-1-28	Bearing Cup.....	200379	All	2	2	2	2	2	2
12-1-14	Shim, .003.....	200381	All	*	*	*	*	*	*
12-1-14	Shim, .005.....	200382	All	*	*	*	*	*	*
12-1-14	Shim, .010.....	200383	All	*	*	*	*	*	*
12-1-14	Shim, .030.....	200384	All	*	*	*	*	*	*
12-1-13	Retainer, Bearing.....	200385	All	2	2	2	2	2	2

\* As required

## REAR AXLE and SUSPENSION

FIGURE NUMBER	GROUP, PART NAME and DESCRIPTION	PART NUMBER	MODELS	BODY STYLES						
				4-DR. SEDAN	CONV.	VIRGINIAN	UTILITY	TAXICAB		
				1	2	3	5	6		
	12.080 - REAR AXLE SHAFT (Cont'd)									
12-1-12	Gasket, Bearing Retainer.....	200435	All	2	2	2	2	2		
12-1-11	Oil Seal, Outer.....	200386	All	2	2	2	2	2		
	Bolt, 3/8"-24 x 1 1/4" Hx. Hd.....	200387	All	12	12	12	12	12		
	Lockwasher, 3/8" Hy.....	340	All	12	12	12	12	12		
	Nut, 3/8"-24 Hx.....	188	All	12	12	12	12	12		
12-1-12	Gasket, Oil Seal, Outer.....	200435	All	2	2	2	2	2		
	12.200 - REAR SPRING									
12-2-12	Spring (incl. Bushing) (8 Leaf).....	204366	All	2						
12-2-12	Spring (incl. Bushing) (Heavy Duty) (Yellow)∅	204365	All	2						
12-2-12	Spring (incl. Bushing) (Yellow) ∅ (9 Leaf)...	204365	491							2
12-2-12	Spring (incl. Bushing) (Orange) ∅ (8 Leaf)...	205649	492,496			2	2			
12-2-12	Spring (incl. Bushing) (Blue) ∅ (9 Leaf).....	206264	491,492							2
12-2-11	Bolt, Front, 7/16"-20 x 3" Hx. Hd.....	673	All	2	2	2	2	2		2
	Locknut, 7/16"-20 Hx.....	658	All	2	2	2	2	2		2
12-2-13	Bushing, Front.....	204364	All	2	2	2	2	2		2
12-2-14	Hanger, Front.....	204933	All	2	2	2	2	2		2
	12.215 - REAR SPRING MOUNTING PLATE									
12-2-15	Plate, Right.....	205554	All	1	1	1	1	1		1
	Plate, Left.....	205555	All	1	1	1	1	1		1
12-2-18	"U" Bolt.....	202573	All	2	2	2	2	2		2
12-2-17	Lockwasher, 9/16" Med.....	342	All	8	8	8	8	8		8
12-2-16	Nut, 9/16"-18 Hx.....	200429	All	8	8	8	8	8		8
	Insulator.....	202246	All	4	4	4	4	4		4
	12.220 - REAR SPRING SHACKLE									
60-34 †	Shackle and Link Kit.....	205746	All	1	1	1	1	1		1
12-2-6	Locknut, 13/32"-20 Hx.....	200432	All	4	4	4	4	4		4
12-2-8	Bushing.....	204361	All	8	8	8	8	8		8
	12.230 - REAR SPRING (OR AXLE) BUMPER									
12-2-10	Bumper.....	201925	All	2	2	2	2	2		2
	Bolt, 1/4"-20 x 1" Hx. Hd. Tap.....	343	All	4	4	4	4	4		4

† For Component Parts SEE Group 60.12

∅ Paint daub on side of Spring

