

FIGURE 15-1 — TYPICAL REAR WHEEL  
BRAKE - EXPLODED VIEW

KEY	PART NAME	GROUP
1	Cylinder.....	15.012
2	Spring, Pull Back, Cylinder End.....	15.004
3	Link, Hand Brake Operating Lever.....	15.008
4	Lever, Hand Brake Operating.....	15.008
5	Spring, Pull Back, Anchor End.....	15.004
6	Lining.....	15.006
7	Clip.....	15.004
8	Cam, Adjusting.....	15.002
9	Plate.....	15.002
10	Lockwasher.....	15.002
11	Nut, Adjusting.....	15.002
12	Bolt with L/W.....	15.012
13	Retainer, Hand Brake.....	15.008
14	Springwasher.....	15.008
15	Shoe.....	15.004

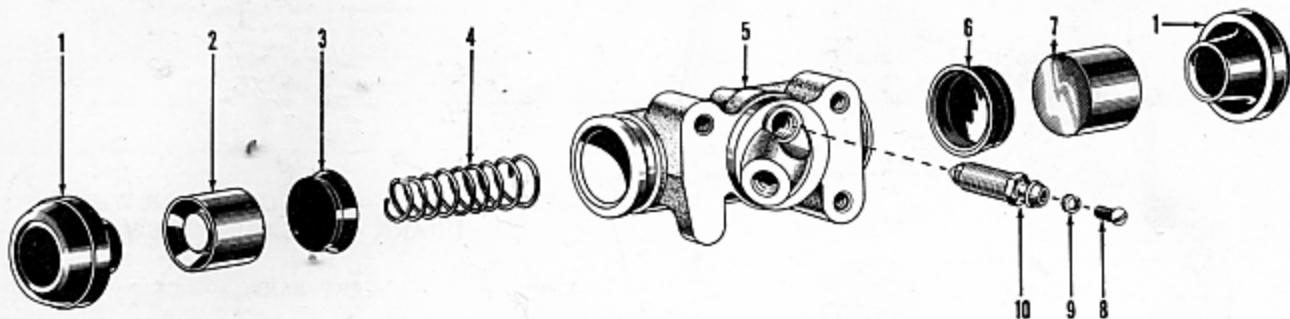


FIGURE 15-2 — TYPICAL FRONT WHEEL BRAKE CYLINDER - EXPLODED VIEW

KEY	PART NAME	GROUP	KEY	PART NAME	GROUP
1	Boot.....	15.020	6	Cup, Front.....	15.020
2	Piston, Rear.....	15.020	7	Piston, Front.....	15.020
3	Cup, Rear.....	15.020	8	Screw.....	15.016
4	Spring, Return.....	15.020	9	Lockwasher.....	15.016
5	Body.....	15.016	10	Bleeder Valve.....	15.016

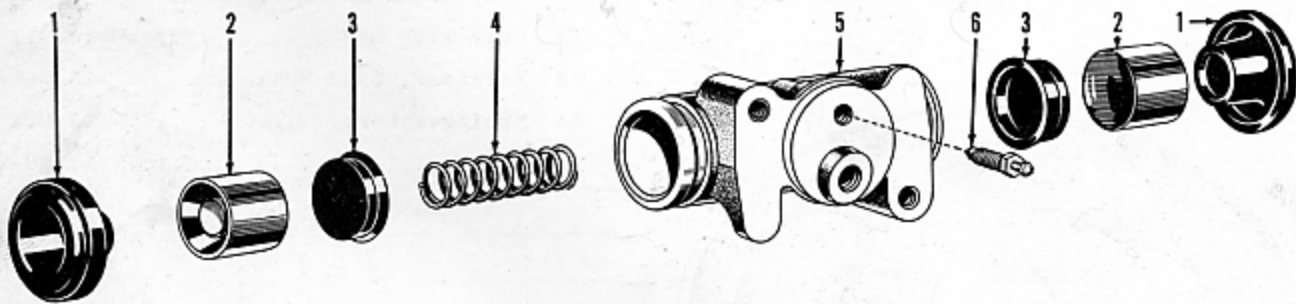


FIGURE 15-3 — TYPICAL REAR WHEEL BRAKE CYLINDER - EXPLODED VIEW

KEY	PART NAME	GROUP	KEY	PART NAME	GROUP
1	Boot.....	15.030	4	Spring, Return.....	15.030
2	Piston.....	15.030	5	Body.....	15.018
3	Cup.....	15.030	6	Bleeder Valve.....	15.018

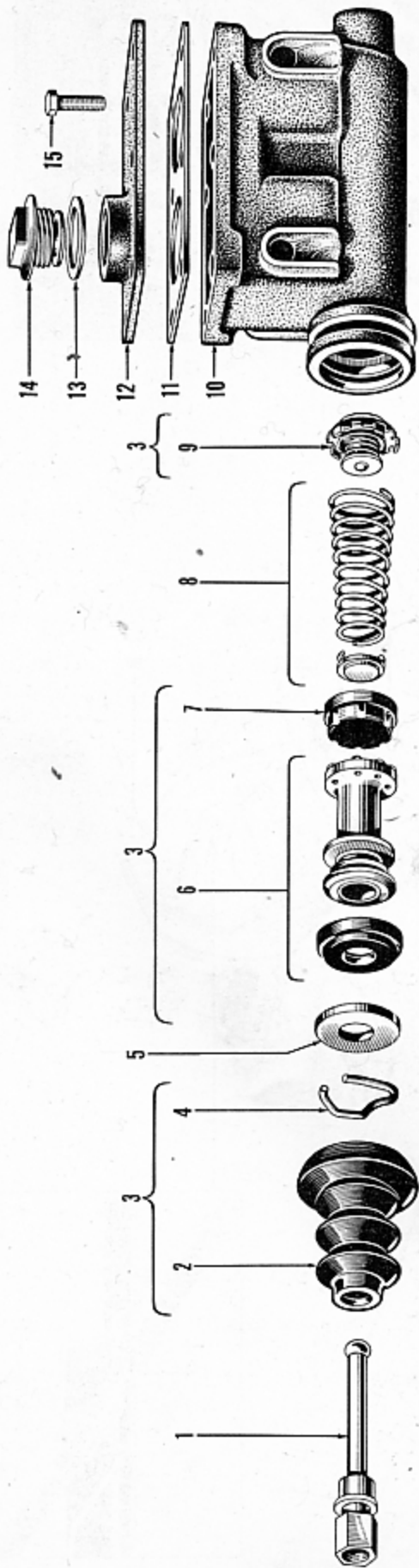


FIGURE 15-4 — TYPICAL MASTER BRAKE CYLINDER - EXPLODED VIEW

KEY	PART NAME	GROUP	KEY	PART NAME	GROUP
1	Rod, Piston Push.....	15.035	9	Valve, Check.....	15.035
2	Boot.....	15.035	10	Serviced Only in Master Cylinder Assembly.....	
3	Repair Kit.....	15.040	11	Gasket, Cover.....	15.035
4	Retainer, Piston Stop.....	15.035	12	Cover.....	15.035
5	Plate, Piston Stop.....	15.035	13	Gasket, Filler Hole Plug.....	15.035
6	Piston Assembly.....	15.035	14	Plug, Filler Hole.....	15.035
7	Cup, Piston.....	15.035	15	Bolt.....	15.035
8	Spring Assembly.....	15.035			

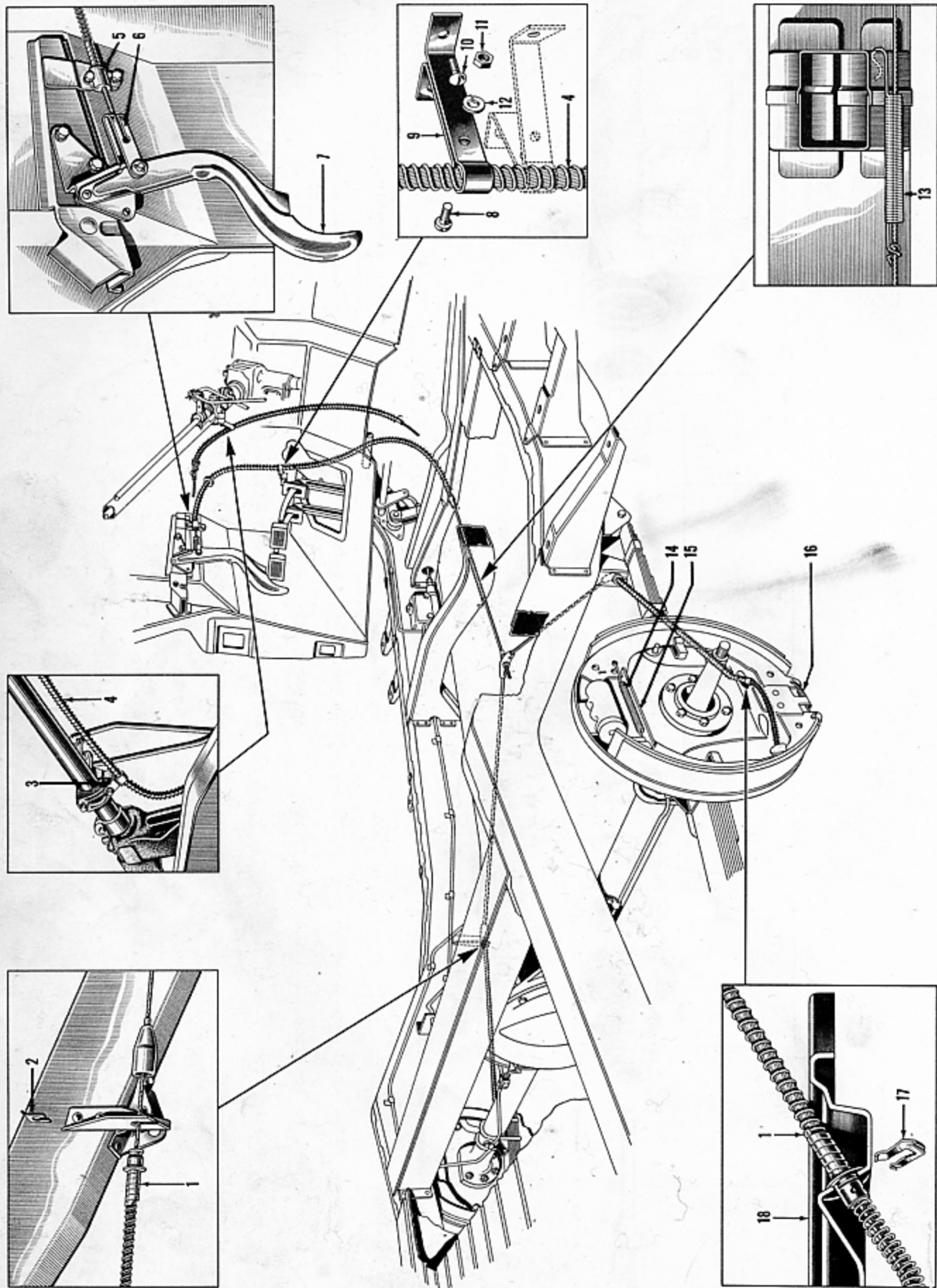


FIGURE 15-5 — HAND BRAKE LEVER AND LINKAGE - EXPLODED VIEW



FIGURE 15-5 — HAND BRAKE LEVER AND LINKAGE - EXPLODED VIEW

KEY	PART NAME	GROUP	KEY	PART NAME	GROUP
1	Cable, Hand Brake, Rear.....	15.236	10	Screw.....	15.228
2	Clip, Hand Brake Rear Cable.....	15.236	11	Nut.....	15.228
3	Clip.....	15.228	12	Lockwasher.....	15.228
4	Cable, Hand Brake, Front.....	15.218	13	Spring.....	15.218
5	Clamp.....	15.226	14	Spring, Cylinder End.....	15.004
6	Yoke.....	15.220	15	Link.....	15.008
7	Lever.....	15.200	16	Spring, Anchor End.....	15.004
8	Screw.....	15.228	17	Clip.....	15.236
9	Clamp.....	15.228	18	Plate, Brake Support.....	15.002

## BRAKES and CONTROLS

FIGURE NUMBER	GROUP, PART NAME and DESCRIPTION	PART NUMBER	MODELS	BODY STYLES					
				4-DR. SEDAN	CONV.	VIRGINIAN	UTILITY	TAXICAB	
				1	2	3	5	6	
	<b>15.000 - BRAKE SUPPORT PLATE-FRONT</b>								
	Plate, Right (incl. Adjusting Cam).....	200176	All	1	1	1	1	1	
	Plate, Left (incl. Adjusting Cam).....	200177	All	1	1	1	1	1	
	Bolt, 3/8"-24 x 7/8" Hx. Hd.....	201042	All	8	8	8	8	8	
	Lockwasher, 3/8" Med.....	192	All	8	8	8	8	8	
	Nut, 3/8"-24 Hx.....	188	All	8	8	8	8	8	
	Adjusting Cam.....	203284	All	4	4	4	4	4	
	Lockwasher, 3/8" Med.....	192	All	4	4	4	4	4	
	Nut, 3/8"-24 Hx.....	203285	All	4	4	4	4	4	
	<b>15.002 - BRAKE SUPPORT PLATE-REAR</b>								
15-1-9	Plate, Right (incl. Adjusting Cam).....	200178	All	1	1	1	1	1	
	Plate, Left (incl. Adjusting Cam).....	200179	All	1	1	1	1	1	
	Bolt, 3/8"-24 x 1 1/4" Hx. Hd.....	200387	All	12	12	12	12	12	
	Lockwasher, 3/8" Hy.....	340	All	12	12	12	12	12	
	Nut, 3/8"-24 Hx.....	188	All	12	12	12	12	12	
15-1-8	Adjusting Cam.....	203284	All	4	4	4	4	4	
15-1-10	Lockwasher, 3/8" Med.....	192	All	4	4	4	4	4	
15-1-11	Nut, 3/8"-24 Hx.....	203285	All	4	4	4	4	4	
	<b>15.004 - BRAKE SHOES</b>								
15-1-15†	Shoe Set, Std.....	200180	All	2	2	2	2	2	
15-1-15†	Shoe Set, .030 Oversize.....	203090	All	*	*	*	*	*	
15-1-7	Clip (Hold Down).....	200187	All	8	8	8	8	8	
15-1-2	Spring, Pull Back (Cylinder End).....	200188	All	4	4	4	4	4	
15-1-5	Spring, Pull Back (Anchor End).....	200189	All	4	4	4	4	4	
	<b>15.006 - BRAKE LINING SET</b>								
15-1-6 †	Lining Set, Std.....	200181	All	2	2	2	2	2	
15-1-6 †	Lining Set, .030 Oversize.....	203091	All	*	*	*	*	*	
	<b>15.008 - HAND BRAKE OPERATING LEVER (IN REAR BRAKE)</b>								
15-1-4	Lever, Right.....	200190	All	1	1	1	1	1	
	Lever, Left.....	200191	All	1	1	1	1	1	
15-1-13	Retainer.....	200192	All	2	2	2	2	2	
15-1-14	Springwasher.....	200193	All	2	2	2	2	2	
15-1-3	Link.....	200194	All	2	2	2	2	2	
	<b>15.010 - BRAKE CYLINDER-FRONT</b>								
	Cylinder, Right.....	200197	All	1	1	1	1	1	
	Cylinder, Left.....	200198	All	1	1	1	1	1	
	Bolt with L/W, 5/16"-18 x 7/16" Hx. Hd.....	200196	All	4	4	4	4	4	
	<b>15.012 - BRAKE CYLINDER-REAR</b>								
15-1-1	Cylinder.....	200199	All	2	2	2	2	2	
15-1-12	Bolt with L/W, 5/16"-18 x 7/16" Hx. Hd.....	200196	All	4	4	4	4	4	

\* As required † For Component Parts SEE Group 60.15

# BRAKES and CONTROLS

15

FIGURE NUMBER	GROUP, PART NAME and DESCRIPTION	PART NUMBER	MODELS	BODY STYLES					
				4-DR. SEDAN	CONV.	VIRGINIAN	UTILITY	TAXICAB	
				1	2	3	5	6	
<b>15.014 - BRAKE CYLINDER REPAIR KIT</b>									
60-46 †	Repair Kit, Front.....	201044	All	*	*	*	*	*	
60-46 †	Repair Kit, Rear.....	201043	All	*	*	*	*	*	
<b>15.016 - BRAKE CYLINDER BODY-FRONT</b>									
15-2-5	Body, Right.....	201045	All	1	1	1	1	1	
15-2-5	Body, Left.....	201046	All	1	1	1	1	1	
15-2-10	Bleeder Valve.....	201616	All	2	2	2	2	2	
15-2-8	Screw, No. 10-32 x 1/4" Rd. Hd. Sl.....	334	All	2	2	2	2	2	
15-2-9	Lockwasher, No. 10 Med.....	254	All	2	2	2	2	2	
<b>15.018 - BRAKE CYLINDER BODY-REAR</b>									
15-3-5	Body.....	201047	All	2	2	2	2	2	
15-3-6	Bleeder Valve.....	201048	All	2	2	2	2	2	
<b>15.020 - BRAKE CYLINDER PISTON-FRONT WHEEL</b>									
15-2-7	Piston, Front.....	201050	All	2	2	2	2	2	
15-2-2	Piston, Rear.....	201049	All	2	2	2	2	2	
15-2-6	Cup, Front.....	201052	All	2	2	2	2	2	
15-2-3	Cup, Rear.....	201051	All	2	2	2	2	2	
15-2-4	Spring, Return.....	201054	All	2	2	2	2	2	
15-2-1	Boot.....	201617	All	4	4	4	4	4	
<b>15.030 - BRAKE CYLINDER PISTON-REAR WHEEL</b>									
15-3-2	Piston.....	201049	All	4	4	4	4	4	
15-3-3	Cup.....	201051	All	4	4	4	4	4	
15-3-4	Spring, Return.....	201055	All	2	2	2	2	2	
15-3-1	Boot.....	201053	All	4	4	4	4	4	
<b>15.035 - MASTER BRAKE CYLINDER</b>									
	Cylinder (less Fittings).....	201056	All	1	1	1	1	1	
8-4-32	Bolt, 3/8"-24 x 3 1/4" Hx. Hd. (L.H.D.)....	644	All	2	2	2	2	2	
8-4-33	Lockwasher, 3/8" Int. Tooth (L.H.D.).....	201	All	2	2	2	2	2	
	Bolt, 3/8"-24 x 6 5/16" Hx. Hd. (R.H.D.)....	203546	491,495	1					
	Spacer, 25/64" I.D. x 3/4" O.D. x 21/32" Long (R.H.D.).....	203547	491,495	1					
	Nut, 3/8"-24 Hx. (R.H.D.).....	645	491,495	1					
	Bolt, 3/8"-24 x 3 1/4" Hx. Hd. (R.H.D.)....	644	491,495	1					
	Lockwasher, 3/8" Med. (R.H.D.).....	192	491,495	2					
	Spacer, 25/64" I.D. x 3/4" O.D. x 7/32" Long (R.H.D.).....	203548	491,495	1					
8-4-34	Fitting, Outlet.....	203549	All	1	1	1	1	1	
	Gasket, 33/64" I.D.....	201059	All	1	1	1	1	1	
	Bolt, 1/2"-20 x 1 5/32" Hx. Hd.....	201058	All	1	1	1	1	1	
	Gasket, Bolt.....	201060	All	1	1	1	1	1	
15-4-12	Cover.....	203329	All	1	1	1	1	1	
15-4-11	Gasket.....	203330	All	1	1	1	1	1	
15-4-15	Bolt, 1/4"-20 x 5/8" Hx. Hd. (used where Cylinder has Tapped Cover Mtg. Holes)....	257	All	6					
15-4-15	Bolt, 1/4"-20 x 3/4" Hx. Hd. Tap.....	701	All	6	6	6	6	6	
15-4-14	Plug, Filler Hole.....	203333	All	1	1	1	1	1	

\* As required † For Component Parts SEE Group 60.15

## BRAKES and CONTROLS

FIGURE NUMBER	GROUP, PART NAME and DESCRIPTION	PART NUMBER	MODELS	BODY STYLES					
				4-DR. SEDAN	CONV.	VIRGINIAN	UTILITY	TAXICAB	
				1	2	3	5	6	
	<b>15.035 - MASTER BRAKE CYLINDER (Cont'd)</b>								
15-4-13	Gasket.....	203334	All	1	1	1	1	1	
15-4-9	Valve, Check.....	201622	All	1	1	1	1	1	
15-4-6	Piston.....	203335	All	1	1	1	1	1	
15-4-7	Cup, Piston.....	201624	All	1	1	1	1	1	
15-4-8	Spring.....	201623	All	1	1	1	1	1	
15-4-5	Plate, Piston Stop.....	201626	All	1	1	1	1	1	
15-4-4	Retainer.....	201627	All	1	1	1	1	1	
15-4-1	Rod, Piston Push.....	203336	All	1	1	1	1	1	
15-4-2	Boot.....	203337	All	1	1	1	1	1	
	<b>15.036 - MASTER BRAKE CYLINDER ACCESS HOLE COVER (IN FLOOR PAN)</b>								
	Cover.....	204109	All	1	1	1	1	1	
	Gasket.....	204110	All	1	1	1	1	1	
	Screw, No. 10-12 x 3/8" Rd. Hd. Cr. Rec. Tap.....	609	All	4	4	4	4	4	
	<b>15.040 - MASTER BRAKE CYLINDER REPAIR KIT AND FLUID</b>								
15-4-3 †	Repair Kit.....	203338	All	*	*	*	*	*	
	Hydraulic Brake Fluid (12 oz.).....	202154	All	*	*	*	*	*	
	Hydraulic Brake Fluid (Qt.).....	202152	All	*	*	*	*	*	
	Hydraulic Brake Fluid (Gal.).....	202153	All	*	*	*	*	*	
	Hydraulic Brake Fluid (5 Gal.).....	202155	All	*	*	*	*	*	
	<b>15.060 - MASTER BRAKE CYLINDER TUBE (CYLINDER TO FRAME TEE)</b>								
	Tube (incl. Nuts).....	204416	All	1		1	1	1	
	Tube (incl. Nuts).....	204417	492,496		1				
	Clip.....	201841	All	1	1	1	1	1	
	Tube (incl. Nuts) (R.H.D.).....	203550	491,495	1					
	Clip.....	203280	491,495	1					
	Nut, 3/8"-24 Hx. x 3/16" Inv. Fl. Tube.....	202142	All	2	2	2	2	2	
	<b>15.062 - MASTER BRAKE CYLINDER FRAME TEE</b>								
	Tee.....	201084	All	1	1	1	1	1	
	Bolt, 5/16"-12 x 5/8" Hx. Hd. Tap.....	284	All	1	1	1	1	1	
	<b>15.064 - FRONT BRAKE TUBE</b>								
	Tube, Right (incl. Nuts)(Frame Tee to Front Brake Hose)(L.H.D.).....	204419	All	1	1	1	1	1	
	Tube, Right (incl. Nuts)(Master Cyl. to Front Brake Hose)(R.H.D.).....	203551	491,495	1					
	Tube, Left (incl. Nuts)(Frame Tee to Front Brake Hose)(R.H.D.).....	201085	491,495	1					
	Clip.....	201841	All	*	*	*	*	*	
	Tube, Left (incl. Nuts)(Frame Tee to Front Brake Hose)(L.H.D.).....	204418	All	1	1	1	1	1	
	Clip.....	201544	All	1	1	1	1	1	
	Nut, 3/8"-24 x 3/16" Inv. Fl. Tube.....	202142	All	4	4	4	4	4	

\* As required † For Component Parts SEE Group 60.15



# BRAKES and CONTROLS

15

FIGURE NUMBER	GROUP, PART NAME and DESCRIPTION	PART NUMBER	MODELS	BODY STYLES				
				4-DR. SEDAN	CONV.	VIRGINIAN	UTILITY	TAXICAB
				1	2	3	5	6
<b>15.068 - FRONT BRAKE HOSE</b>								
	Hose.....	201006	All	2	2	2	2	2
	Clip, Spring.....	201071	All	2	2	2	2	2
	Gasket.....	201087	All	2	2	2	2	2
<b>15.070 - REAR BRAKE TUBE (FRAME TEE TO REAR HOSE)</b>								
	Tube (incl. Nuts)(73" Roll)(L.H.D.).....	205387	All	1	1	1	1	1
	Clip, Spring, 3/16" Tube.....	201841	All	7	7	7	7	7
	Tube (incl. Nuts)(106" Roll)(R.H.D.).....	205386	491,495	1				
	Nut, 3/8"-24 Hx. x 3/16" Inv. Fl. Tube.....	202142	All	2	2	2	2	2
<b>15.074 - REAR BRAKE HOSE (BRAKE TUBE TO AXLE TEE)</b>								
	Hose (L.H.D.).....	201086	All	1	1	1	1	1
	Hose (R.H.D.).....	201089	491,495	1				
	Clip, Spring.....	201071	All	1	1	1	1	1
	Gasket.....	201087	All	1	1	1	1	1
<b>15.076 - REAR AXLE BRAKE TUBE TEE</b>								
	Tee.....	201091	All	1	1	1	1	1
	Bolt, 1/4"-28 x 7/8" Hx. Hd.....	303	All	1	1	1	1	1
	Lockwasher, 1/4" Lt.....	410	All	1	1	1	1	1
<b>15.078 - REAR AXLE BRAKE TUBE (AXLE TEE TO WHEEL CYLINDER)</b>								
	Tube, Right (incl. Nuts)(60" Axle).....	201092	All	1	1	1		1
	Tube, Left (incl. Nuts)(60" Axle).....	201093	All	1	1	1		1
	Tube, Right (incl. Nuts)(58 3/4" Axle).....	206381	All	1	1	1	1	1
	Tube, Left (incl. Nuts)(58 3/4" Axle).....	206382	All	1	1	1	1	1
	Clip.....	201842	All	*	*	*	*	*
	Stud, 3/8"-24 x 3/8"-16 x 1 1/4".....	201095	All	2	2	2	2	2
	Nut, 3/8"-24 Hx.....	188	All	2	2	2	2	2
	Bolt, 3/8"-16 x 5/8" Hx. Hd.....	411	All	1	1	1	1	1
	Lockwasher, 3/8" Int. Tooth.....	201	All	3	3	3	3	3
	Nut, 3/8"-24 Hx. x 3/16" Inv. Fl. Tube.....	201094	All	4	4	4	4	4
<b>15.100 - MASTER CYLINDER OPERATING ROD (PEDAL TO CYLINDER)</b>								
8-4-29	Rod (L.H.D.).....	204422	All	1		1	1	1
	Rod (L.H.D.).....	204423	492,496		1			
	Rod (R.H.D.).....	203552	491,495	1				
8-4-27	Clevis Pin, 7/16".....	203558	All	1	1	1	1	1
8-4-28	Cotter Pin, 3/32" x 3/4".....	139	All	1	1	1	1	1
	Jamnut, 7/16"-20 Hx.....	412	All	1	1	1	1	1
<b>15.102 - BRAKE PEDAL</b>								
8-4-4	Pedal (incl. Bushing and Oiler)(L.H.D.).....	204424	All	1	1	1	1	1
8-4-11	Bushing (L.H.D.).....	204425	All	1	1	1	1	1
	Oiler, Straight (L.H.D.).....	202120	All	1	1	1	1	1

\* As required

## BRAKES and CONTROLS

FIGURE NUMBER	GROUP, PART NAME and DESCRIPTION	PART NUMBER	MODELS	BODY STYLES					
				4-DR. SEDAN	CONV.	VIRGINIAN	UTILITY	TAXICAB	
				1	2	3	5	6	
	<b>15.102 - BRAKE PEDAL (Cont'd)</b>								
8-4-10	Washer (L.H.D.).....	204287	All	2	2	2	2	2	
8-4-12	Lock Ring (L.H.D.).....	204426	All	1	1	1	1	1	
8-4-3	Dust Seal (L.H.D.).....	203473	All	2	2	2	2	2	
8-4-1	Pad (Black)(L.H.D.).....	204232	All	1	1	1	1	1	
8-4-1	Pad (Hickory Brown)(L.H.D.).....	204427	All	1	1	1	1	1	
8-4-1	Pad (Solar Gray)(L.H.D.).....	204428	All	1	1	1	1	1	
8-4-1	Pad (Emblem Blue)(L.H.D.).....	204429	492,495,496	1	1	1	1	1	
8-4-1	Pad (Maroon)(L.H.D.).....	204430	492,495,496	1	1	1	1	1	
8-4-1	Pad (Crystal Green)(L.H.D.).....	204431	All	1	1	1	1	1	
8-4-1	Pad (Teal Blue)(L.H.D.).....	204432	492,495,496	1	1	1	1	1	
8-4-1	Pedal (incl. Bushing and Oiler)(R.H.D.).....	203553	491,495	1	1	1	1	1	
	Bushing (R.H.D.).....	203554	491,495	1	1	1	1	1	
	Thrustwasher (R.H.D.).....	203470	491,495	2	2	2	2	2	
	Lock Ring (R.H.D.).....	203471	491,495	1	1	1	1	1	
	Oiler, Straight (R.H.D.).....	202120	491,495	1	1	1	1	1	
	Pad (Black)(R.H.D.).....	203472	491,495	1	1	1	1	1	
	Pad (Hickory Brown)(R.H.D.).....	205911	491,495	1	1	1	1	1	
	Pad (Emblem Blue)(R.H.D.).....	205912	491,495	1	1	1	1	1	
	Pad (Maroon)(R.H.D.).....	205913	491,495	1	1	1	1	1	
	Pad (Crystal Green)(R.H.D.).....	205914	491,495	1	1	1	1	1	
	Pad (Teal Blue)(R.H.D.).....	205915	491,495	1	1	1	1	1	
	<b>15.104 - BRAKE AND CLUTCH PEDAL SHAFT</b>								
8-4-25	Shaft (incl. Lever)(thru Frame)(L.H.D.).....	204235	All	1	1	1	1	1	
	Bushing (L.H.D.).....	204236	All	2	2	2	2	2	
	Shaft (R.H.D.).....	203474	491,495	1	1	1	1	1	
	Bolt, 3/8"-24 x 1" Hx. Hd.....	327	491,495	1	1	1	1	1	
	Lockwasher, 3/8" Med.....	192	491,495	1	1	1	1	1	
	<b>15.108 - BRAKE PEDAL RETURN SPRING</b>								
8-4-26	Spring (L.H.D.).....	204433	All	1	1	1	1	1	
	Spring (R.H.D.).....	200224	491,495	1	1	1	1	1	
	<b>15.112 - BRAKE PEDAL FLOOR PLATE</b>								
	Plate, Upper (L.H.D.).....	204245	All	1	1	1	1	1	
	Plate, Lower (L.H.D.).....	204246	All	1	1	1	1	1	
	Gasket.....	205499	All	1	1	1	1	1	
	Screw, Washer Head.....	205680	All	5	5	5	5	5	
	Plate, Upper (R.H.D.).....	203481	491,495	1	1	1	1	1	
	Plate, Lower (R.H.D.).....	203482	491,495	1	1	1	1	1	
	Gasket.....	203483	491,495	1	1	1	1	1	
	Screw, Washer Head.....	205680	491,495	5	5	5	5	5	
	<b>15.200 - HAND BRAKE LEVER (PRIME)</b>								
	Lever (with Flat Mtg. Sector).....	201850	All	1	1	1	1	1	
	Bolt, 3/8"-16 x 3/4" Hx. Hd.....	220	All	2	2	2	2	2	
	Lockwasher, 3/8" Med.....	192	All	2	2	2	2	2	
	Spacer (use only with 201850 Lever).....	201849	All	1	1	1	1	1	
15-5-7	Lever (with Offset Mtg. Sector).....	204434	All	1	1	1	1	1	
	Bolt, 3/8"-16 x 1 1/8" Hx. Hd.....	182	All	2	2	2	2	2	
	Lockwasher, 3/8" Med.....	192	All	2	2	2	2	2	

