

FIGURE 3-1 — INTAKE AND EXHAUST MANIFOLDS - EXPLODED VIEW



FIGURE 3-1 — INTAKE AND EXHAUST MANIFOLDS - EXPLODED VIEW

KEY	PART NAME	GROUP
1	Lockwasher, Carburetor Mounting . . . . .	3.680
2	Nut, Carburetor Mounting . . . . .	3.680
3	Gasket, Intake and Exhaust Manifold to Block . . . . .	3.000
4	Stud, Exhaust Manifold to Block, Center . . . . .	5.000
5	Stud, Exhaust and Intake Manifold to Block . . . . .	5.000
6	Stud, Exhaust Manifold to Block, Ends . . . . .	5.000
7	Stud, Carburetor and Intake and Exhaust Manifold Mounting . . . . .	3.680
8	Manifold Assembly, Intake . . . . .	3.000
9	Gasket, Intake to Exhaust Manifold . . . . .	3.000
10	Valve, Heat Control . . . . .	5.010
11	Bushing, Heat Control Shaft . . . . .	5.010
12	Flatwasher, Exhaust Manifold to Block Center Stud . . . . .	5.000
13	Nut, Intake and Exhaust Manifold to Block . . . . .	5.000
14	Retainer, Intake and Exhaust Manifold to Block . . . . .	5.000
15	Flatwasher, Exhaust Manifold End Stud . . . . .	5.000
16	Counterweight, Heat Control Valve . . . . .	5.020
17	Nut, Counterweight to Shaft . . . . .	5.020
18	Key, Counterweight to Shaft . . . . .	5.020
19	Screw, Counterweight to Shaft . . . . .	5.020
20	Thermostat, Heat Control . . . . .	5.010
21	Shaft, Heat Control Valve . . . . .	5.010
22	Manifold Assembly, Exhaust . . . . .	5.000
23	Stud, Exhaust Pipe to Manifold . . . . .	5.040
24	Nut, Intake to Exhaust Manifold . . . . .	3.000
25	Flatwasher, Intake to Exhaust Manifold . . . . .	3.000

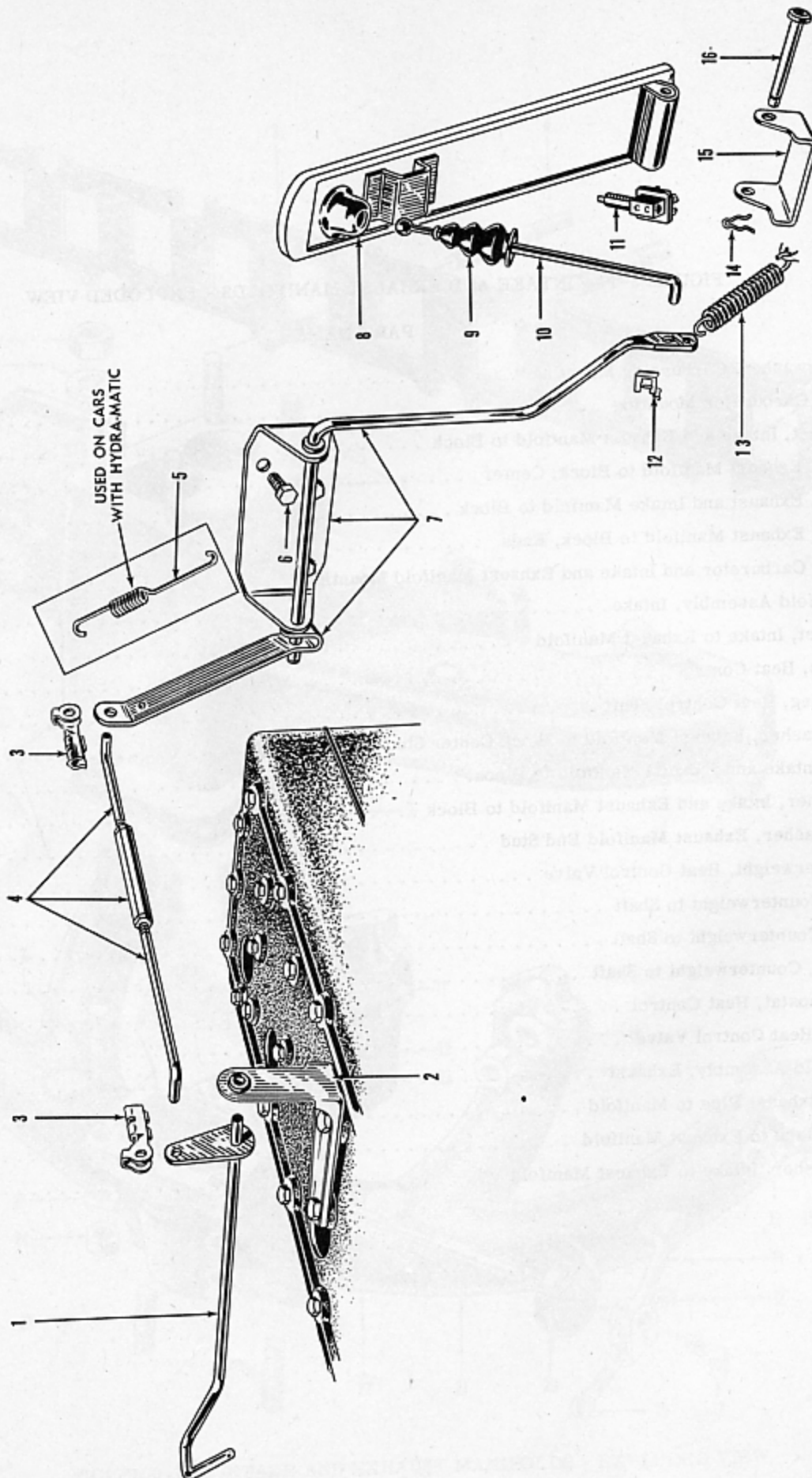


FIGURE 3-2 — ACCELERATOR LINKAGE - EXPLODED VIEW

FIGURE 3-2 - ACCELERATOR LINKAGE - EXPLODED VIEW

FIGURE 3-2 - ACCELERATOR LINKAGE - EXPLODED VIEW

KEY	PART NAME	GROUP	KEY	PART NAME	GROUP
1	Shaft Assembly, Extension	3.450	9	Boot, Pedal	3.070
2	Bracket, Extension Shaft	3.450	10	Rod, Pedal	3.085
3	Clip, Adjusting Rod	3.435	11	Switch, Overdrive Kickdown	7.806
4	Rod Assembly, Adjusting	3.435	12	Clip, Pedal Rod	3.085
5	Spring, Linkage Tension	3.400	13	Spring, Linkage Tension	3.400
6	Bolt, Cross Shaft Assembly	3.430	14	Clip, Pedal Pivot Pin	3.070
7	Shaft Assembly, Cross	3.430	15	Bracket, Pedal	3.070
8	Pedal, Accelerator	3.070	16	Pin, Pedal Pivot	3.070

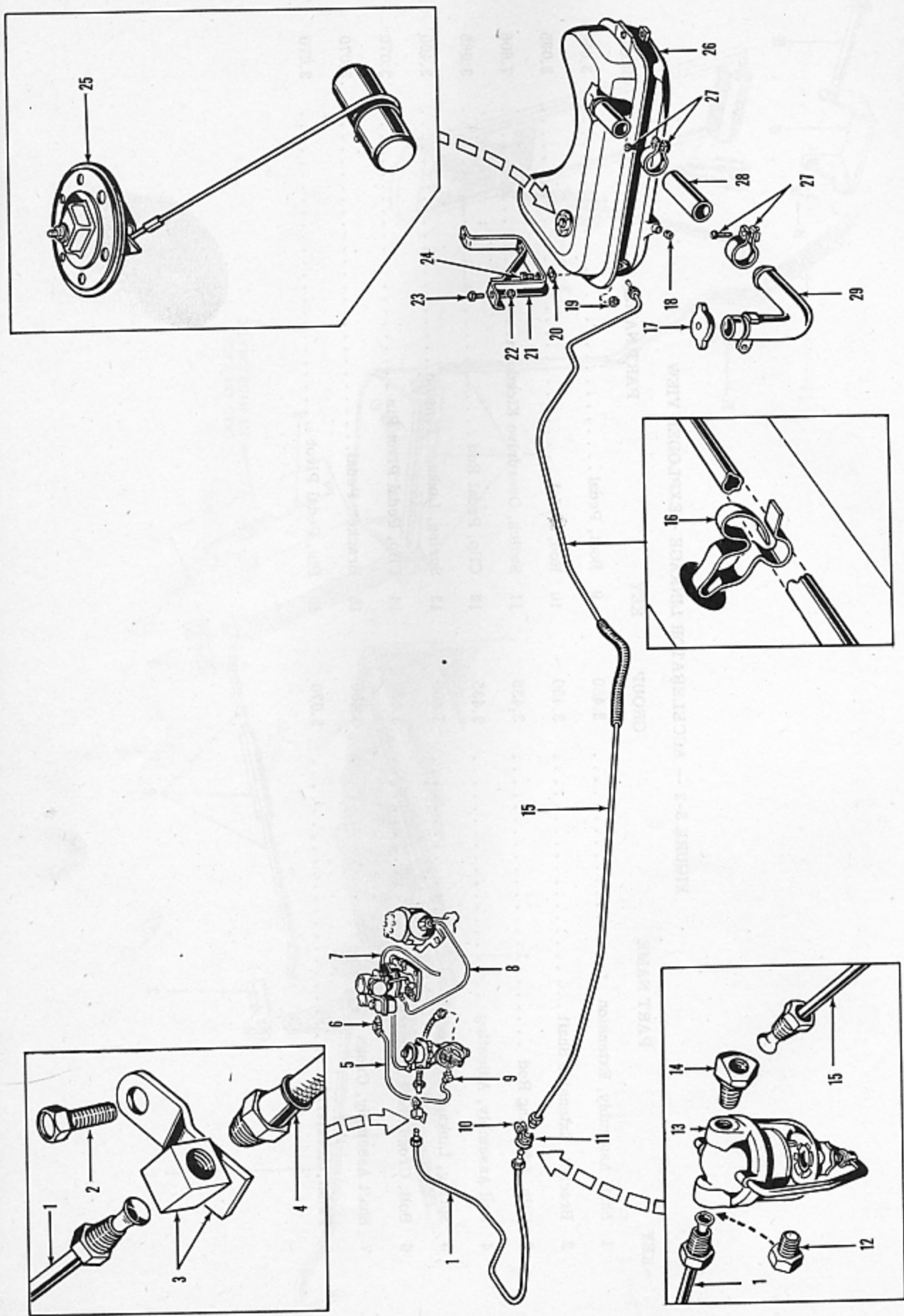


FIGURE 3-3 — CHASSIS FUEL AND VACUUM LINES - INSTALLED VIEW

FIGURE 3-3 — CHASSIS FUEL AND VACUUM LINES - INSTALLED VIEW

KEY	PART NAME	GROUP	KEY	PART NAME	GROUP
1	Tube Assembly, Union to Frame Fitting . . . . .	3.550	16	Clip, Fuel Tank Lines to Frame . . . . .	3.550
2	Bolt, Fitting to Frame . . . . .	3.550	17	Cap, Fuel Tank . . . . .	3.520
3	Fitting, Fuel Line . . . . .	3.550	18	Plug, Fuel Tank Drain . . . . .	3.520
4	Tube Assembly, Fitting to Fuel Pump . . . . .	3.550	19	Locknut, Fuel Tank to Bracket . . . . .	3.520
5	Tube Assembly, Fuel Pump to Carburetor . . . . .	3.560	20	Anti-Squeak, Fuel Tank to Bracket . . . . .	3.520
6	Elbow, Fuel Pump Line to Carburetor . . . . .	3.560	21	Bracket, Fuel Tank to Frame . . . . .	3.520
7	Tube Assembly, Vacuum Pump to Windshield Wiper . . . . .	3.560	22	Locknut, Fuel Tank Bracket to Frame . . . . .	3.520
8	Tube Assembly, Spark Advance . . . . .	7.340	23	Bolt, Fuel Tank Bracket to Frame . . . . .	3.520
9	Elbow, Fuel Pump Line to Fuel Pump . . . . .	3.560	24	Bolt, Fuel Tank to Bracket . . . . .	3.520
10	Clip, Fuel Tank Line Union to Frame . . . . .	3.550	25	Gauge, Tank Unit . . . . .	3.580
11	Union, Fuel Tank Line . . . . .	3.550	26	Tank, Fuel . . . . .	3.520
12	Connector, Fuel Line to Filter . . . . .	3.555	27	Clamp, Fuel Tank Filler Tube Hose . . . . .	3.530
13	Filter, Fuel . . . . .	3.555	28	Hose, Fuel Tank Filler Tube . . . . .	3.530
14	Elbow, Fuel Line to Filter . . . . .	3.555	29	Tube, Fuel Tank Filler . . . . .	3.530
15	Tube Assembly, Fuel Tank to Filter . . . . .	3.550			

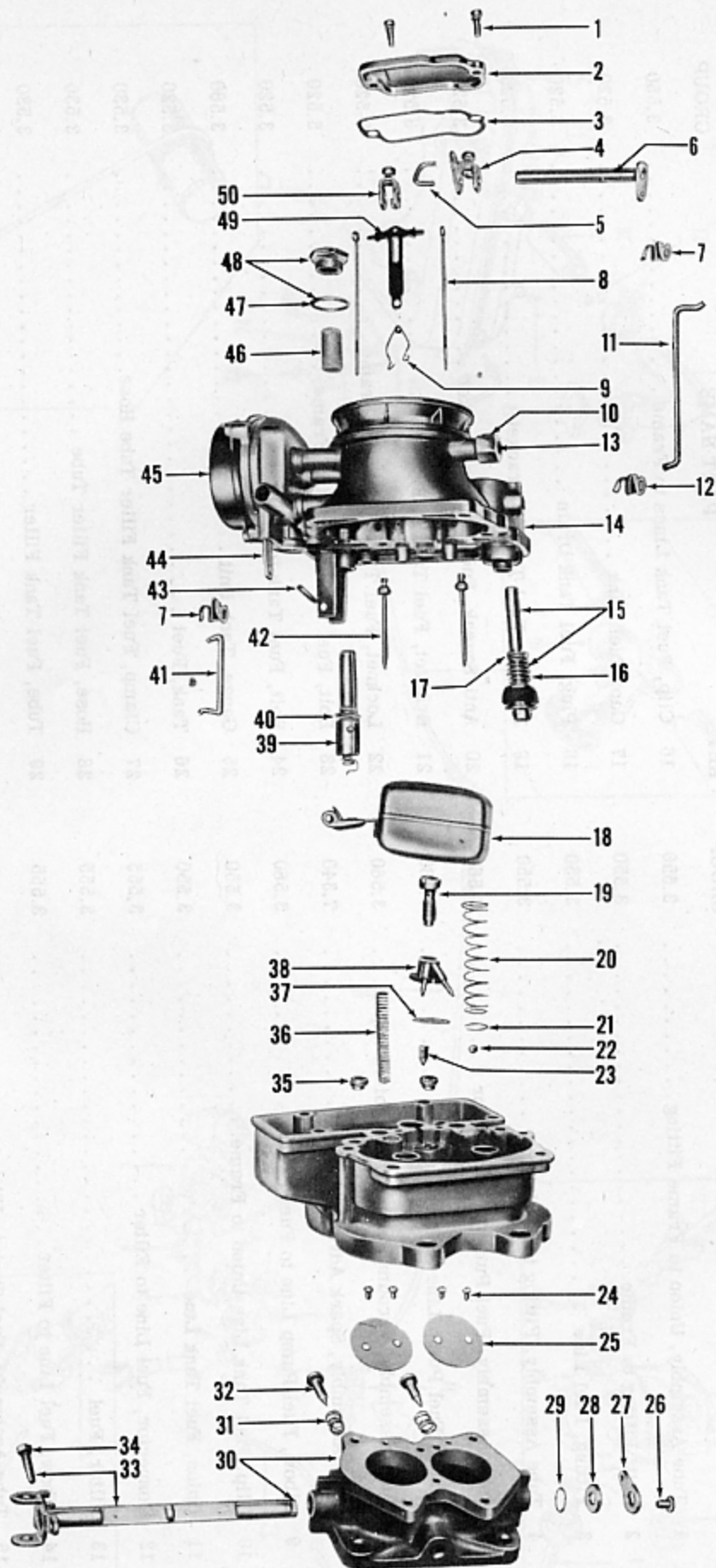


FIGURE 3-4 — CARBURETOR - CARTER MODEL WGD-781S

# Group 3.680

FIGURE 3-4 — CARBURETOR - CARTER MODEL WGD-781S

KEY	PART NAME	PART NO.	QTY.
	Carburetor . . . . .	208582	1
1	Screw and Washer Assembly, Dust Cover Attaching . . . . .	208994	2
2	Dust Cover . . . . .	208996	1
3	Gasket, Dust Cover . . . . .	209503	1
4	Arm and Screw Assembly, Pump . . . . .	208970	1
5	Link, Pump Arm . . . . .	203795	1
6	Lever and Countershaft Assembly, Pump Operating . . . . .	208969	1
7	Retainer, Throttle and Choke Connector Rod . . . . .	206653	2
8	Metering Rod . . . . .	208980	2
	Metering Rod, 1st Lean . . . . .	208981	2
	Metering Rod, 2nd Lean . . . . .	208982	2
9	Spring, Metering Rod . . . . .	208974	1
10	Retainer, Choke Shaft . . . . .	208978	1
11	Connector Rod, Throttle . . . . .	208992	1
12	Retainer, Throttle Connector Rod . . . . .	206654	1
13	Lever, Link and Shaft Assembly, Choke Piston . . . . .	208961	1
14	Air Horn and Climatic Control Assembly . . . . .	208957	1
15	Plunger, Rod, Spring and Retainer Assembly . . . . .	208979	1
16	Spring, Upper Pump . . . . .	203778	1
17	Retainer, Pump Spring . . . . .	203780	1
18	Float and Lever Assembly . . . . .	208964	1
19	Screw, Pump Jet Housing Attaching . . . . .	208988	1
20	Spring, Pump Lower . . . . .	208975	1
21	Retaining Ring, Pump Check Ball . . . . .	208977	1
22	Check Ball, Pump Intake . . . . .	201704	1
23	Needle, Pump Check . . . . .	208962	1
24	Screw, Throttle Valve Attaching . . . . .	203814	4
25	Throttle Valve . . . . .	203755	2
26	Screw, Throttle Shaft Arm Attaching . . . . .	203785	1
27	Arm, Throttle Shaft . . . . .	208991	1
28	Washer, Throttle Shaft . . . . .	203805	1
29	Retaining Ring, Throttle Shaft . . . . .	203781	1
30	Body Flange Assembly . . . . .	208995	1
31	Lock Spring, Idle Adjusting Screw . . . . .	201668	2
32	Screw, Idle Adjustment . . . . .	203770	1
33	Shaft and Lever Assembly, Throttle . . . . .	208956	1
34	Screw, Throttle Lever Adjustment . . . . .	203211	1
35	Jet, Metering Rod . . . . .	208997	2
36	Spring, Vacuum Piston . . . . .	208973	1
37	Gasket, Pump Jet . . . . .	209501	1
38	Jet and Housing Assembly, Pump . . . . .	208968	1
39	Needle and Seat Assembly . . . . .	212631	1
40	Gasket, Needle Seat . . . . .	201679	1
41	Connecting Rod, Choke . . . . .	208993	1
42	Jet Assembly, Low Speed . . . . .	208959	2
43	Pin, Float Lever . . . . .	203767	1
44	Link, Fast Idle . . . . .	208995	1
45	Housing and Coil Assembly, Thermostatic . . . . .	209507	1
46	Strainer, Bowl Cover . . . . .	201675	1
47	Gasket, Bowl Strainer . . . . .	201677	1
48	Nut and Gasket Assembly, Strainer . . . . .	201676	1
49	Link, Vacuumeter Piston . . . . .	208994	1
50	Arm and Screw Assembly, Metering Rod . . . . .	208990	1
	Air Horn and Piston Housing Assembly . . . . .	208958	1
	Valve, Choke . . . . .	203758	1
	Rivet Plug . . . . .	201722	2
	Rivet Plug . . . . .	201750	4
	Rivet Plug . . . . .	201723	1
	Rivet Plug, Idle Port . . . . .	201724	2
	Rivet Plug, Nozzle . . . . .	203761	2
	Lever and Pin Assembly, Choke Trip . . . . .	208960	1
	Gasket, Piston Housing . . . . .	208963	1
	Strainer, Pump . . . . .	208966	1
	Screw, Choke Valve Attaching . . . . .	201670	2
	Welsh Plug, Choke Cylinder . . . . .	208967	1
	Spring, Plunger . . . . .	208971	1
	Spring, Intake Needle . . . . .	208972	1
	Spring, Fast Idle Cam . . . . .	208976	1
	Retainer, Coil Housing . . . . .	203779	3
	Screw, Metering Rod Arm Clamp . . . . .	208983	2
	Screw and Washer Assembly, Air Horn Attaching . . . . .	208985	8
	Screw and Washer Assembly, Body Flange Attaching . . . . .	208986	4
	Screw, Coil Housing Attaching . . . . .	208987	3
	Screw, Piston Housing Attaching . . . . .	208989	3
	Gasket, Body Flange . . . . .	208998	1
	Gasket, Air Horn . . . . .	209502	1
	Gasket, Coil Housing . . . . .	209504	1
	Retainer Washer, Choke Shaft . . . . .	209505	1
	Pin, Choke Piston . . . . .	201661	1
	Pin, Intake Needle . . . . .	209506	1
	Pin Spring . . . . .	201687	1
	Piston, Choke . . . . .	201660	1
	Piston and Pin Assembly, Vacuum . . . . .	201714	1
	Cam Assembly, Fast Idle . . . . .	209508	1
	Baffle Plate . . . . .	209509	1
	Gasket Assortment . . . . .	209510	1
	Repair Kit . . . . .	209511	1
3-1-7	Stud, Mounting . . . . .	205510	4
3-1-1	Lockwasher, 5/16" Med . . . . .	240	4
3-2-2	Nut, 5/16"-24 Hx . . . . .	189	4
1-1-101	Gasket (to Manifold) . . . . .	203355	1



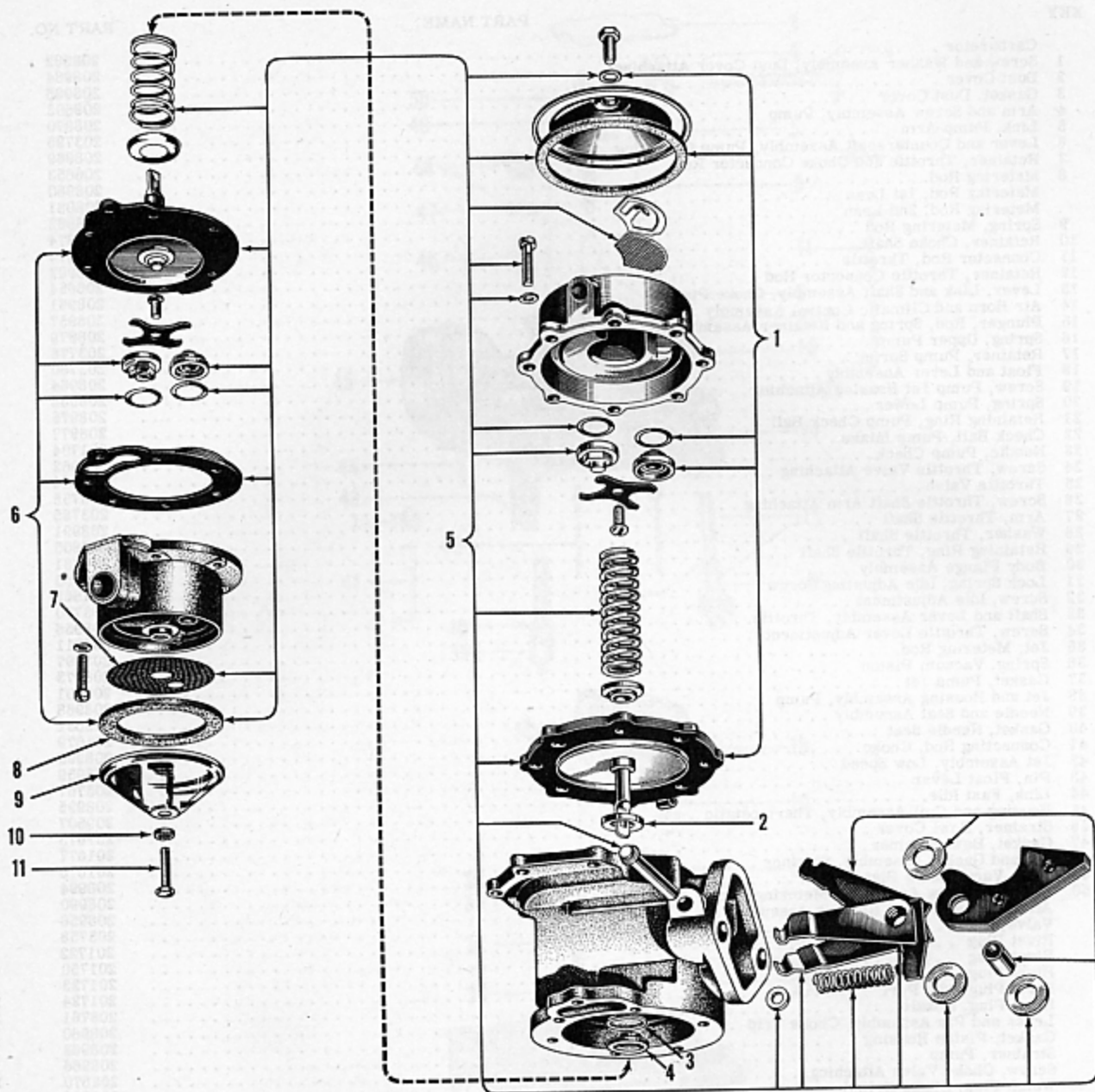


FIGURE 3-5 — TYPICAL FUEL AND VACUUM PUMP - EXPLODED VIEW

KEY	PART NAME	GROUP
1	Diaphragm Kit (Vacuum) . . . . .	3.500
2	Oil Seal, Body (Vacuum Side) . . . . .	3.505
3	Gasket, Body Oil Seal (Fuel Side) . . . . .	3.505
4	Oil Seal, Body (Fuel Side) . . . . .	3.505
5	Repair Kit . . . . .	3.480
6	Diaphragm Kit (Fuel) . . . . .	3.500
7	Screen . . . . .	3.490
8	Gasket . . . . .	3.490
9	Cover . . . . .	3.490
10	Gasket, Bolt . . . . .	3.490
11	Bolt . . . . .	3.490



## FUEL

FIGURE NUMBER	GROUP, PART NAME and DESCRIPTION	PART NUMBER	USED PER CAR MODEL	
			511	512
	<b>3.470 - FUEL PUMP</b>			
1-1-50	Pump, Fuel and Vacuum (use with Vacuum Windshield Wiper) . . . . .	207446	1	1
	Pump, Fuel (use with Electric Windshield Wiper). <i>use 215127</i> . . . . .	209963	1	1
	Stud, 5/16"-18 x 1 3/4" . . . . .	202010	2	2
	Lockwasher, 5/16" Hy. . . . .	191	2	2
	Nut, 5/16"-18 Hx. . . . .	205	2	2
1-1-49	Gasket (to Block) . . . . .	200283	1	1
	Gasket, Cover Plate (Vacuum Side) . . . . .	206858	1	1
	<b>3.480 - FUEL PUMP REPAIR KIT</b>			
3-5-5	Repair Kit (use for 207446 Pump) . . . . .	208659	*	*
	Repair Kit (use for 209963 Pump) . . . . .	212671	*	*
	<b>3.490 - FUEL PUMP BOWL COVER</b>			
3-5-9	Cover. . . . .	208576	1	1
3-5-8	Gasket . . . . .	208577	1	1
3-5-11	Bolt, 1/4"-28 x 7/8" Hx. Hd. . . . .	303	1	1
3-5-10	Gasket, Bolt . . . . .	208578	1	1
3-5-7	Screen . . . . .	208579	1	1
	<b>3.500 - FUEL PUMP DIAPHRAGM KIT</b>			
3-5-6	Diaphragm Kit (Fuel Side) (use for 207446 Pump) . . . . .	208580	*	*
	Diaphragm Kit (use for 209963 Pump) . . . . .	212672	*	*
3-5-1	Diaphragm Kit (Vacuum Side) . . . . .	202876	*	*
	Diaphragm Kit (Export only) (use for 207446 Pump) (for use with Alcohol Base Fuel) . . . . .	203345	*	*
	Diaphragm Kit (Export only) (use for 209963 Pump) (for use with Alcohol Base Fuel) . . . . .	212673	*	*
	<b>3.505 - FUEL PUMP OIL SEAL</b>			
3-5-4	Oil Seal (Fuel Side) . . . . .	206699	1	1
3-5-3	Gasket, Oil Seal (Fuel Side) . . . . .	206700	1	1
3-5-2	Oil Seal (Vacuum Side) . . . . .	206701	1	1
	<b>3.520 - FUEL TANK</b>			
3-3-26	Tank . . . . .	207463	1	1
3-3-24	Bolt, 3/8"-24 x 1" Hx. Hd. . . . .	327	3	3
3-3-20	Anti-Squeak . . . . .	200459	3	3
3-3-19	Locknut, 3/8"-24 Hx. . . . .	202257	3	3
3-3-21	Bracket (to Frame). . . . .	209720	1	1
3-3-23	Bolt, 3/8"-24 x 1" Hx. Hd. . . . .	327	2	2
3-3-22	Locknut, 3/8"-24 Hx. . . . .	202257	2	2
3-3-17	Cap . . . . .	200460	1	1
	Panel, Stone Deflector . . . . .	207465	1	1
	Bumper (Rubber) . . . . .	207314	2	2
3-3-18	Plug, Drain, 1/4" Pipe Hx. Hd. . . . .	256	1	1

\*As Required

# FUEL

3

FIGURE NUMBER	GROUP, PART NAME and DESCRIPTION	PART NUMBER	USED PER CAR MODEL	
			511	512
<b>3.530 - FUEL TANK FILLER TUBE</b>				
3-3-29	Tube . . . . .	207466	1	1
	Bolt, 1/4"-20 x 7/8" Hx. Hd. . . . .	303	1	1
	Lockwasher, 1/4" Ext. Tooth . . . . .	370	1	1
	Nut, 1/4"-20 Hx. . . . .	203	1	1
	Insulator . . . . .	201924	1	1
3-3-28	Hose, 2 1/4" Dia. x 3" . . . . .	200462	1	1
3-3-27	Clamp, 2 5/8" Dia. . . . .	202129	2	2
<b>3.550 - FUEL TANK TO FUEL PUMP LINE</b>				
3-3-15	Tube (148" Roll) (incl. Nuts) . . . . .	205384	1	1
3-3-1	Tube (35" Roll) (incl. Nuts) . . . . .	206050	1	1
3-3-11	Union, 1/2"-20 Pipe x 5/16" Inv. Fl. Tube . . . . .	205391	1	1
	Nut, 1/2"-20 Hx. x 5/16" Inv. Fl. Tube . . . . .	202133	2	2
3-3-10	Clip (Union to Frame) . . . . .	205311	1	1
	Bolt, 5/16"-12 x 5/8" Hx. Hd. Tap . . . . .	284	1	1
3-3-16	Clip (to Frame) . . . . .	207470	4	4
3-3-3	Fitting (on Frame) . . . . .	200464	1	1
	Clip . . . . .	205311	1	1
3-3-2	Bolt, 5/16"-12 x 5/8" Hx. Hd. Tap . . . . .	284	1	1
	Lockwasher, 5/16" Med. . . . .	240	1	1
3-3-4	Tube, Fitting to Fuel Pump (Flexible) . . . . .	205254	1	1
	Elbow (Pump End) . . . . .	201823	1	1
<b>3.555 - FUEL FILTER</b>				
3-3-13	Filter . . . . .	212642	1	1
3-3-12	Connector, 1/2"-20 x 1/8" Pipe 5/16" Inv. Fl. Tube . . . . .	202880	1	1
3-3-14	Elbow, 1/2"-20 x 1/8" Pipe x 45° 5/16" Inv. Fl. Tube . . . . .	202137	1	1
	Element (incl. Gaskets) . . . . .	212643	1	1
	Gasket (Paper) . . . . .	212645	1	1
	Bowl . . . . .	212644	1	1
	Gasket (Rubber) . . . . .	212646	1	1
<b>3.560 - FUEL PUMP LINES</b>				
3-3-5	Tube, Pump to Carburetor . . . . .	207467	1	1
	Nut, 1/2"-20 Hx. x 5/16" Inv. Fl. Tube . . . . .	202133	2	2
3-3-6	Elbow (Carb. End) 1/2"-20 x 1/8" Pipe 90° x 5/16" Inv. Fl. Tube . . . . .	202132	1	1
3-3-9	Elbow (Pump End) 1/2"-20 x 1/8" Pipe 45° x 5/16" Inv. Fl. Tube . . . . .	202137	1	1
	Tube, Pump to Carburetor Vacuum . . . . .	207468	1	1
	Nut, 7/16"-24 Hx. x 1/4" Inv. Fl. Tube . . . . .	202143	2	2
	Elbow (Pump and Carburetor) 7/16"-24 x 1/8" Pipe 90° x 1/4" Inv. Fl. Tube . . . . .	202123	2	2
3-3-7	Tube, Vacuum Pump to Windshield Wiper . . . . .	205694	1	1
	Nut, 7/16"-24 Hx. x 1/4" Inv. Fl. Tube . . . . .	202143	1	1
	Connector, 7/16"-24 x 1/8" Pipe 1/4" Inv. Fl. Tube . . . . .	202125	1	1
	Clip (to Manifold End Stud) . . . . .	205697	1	1
	Lockwasher, 3/8" Ext. Tooth . . . . .	291	1	1
	Nut, 3/8"-16 Hx. . . . .	204	1	1

