

FIGURE 7-1 — ELECTRICAL WIRING - INSTALLED VIEW

FIGURE 7-1 — ELECTRICAL WIRING - INSTALLED VIEW

KEY	PART NAME	GROUP	KEY	PART NAME	GROUP
1	Cable, Headlight	7.546	11	Harness, Overdrive Wiring	7.812
2	Cable, Horn Relay to Horn	7.525	12	Cable, Overdrive Rail Switch to Governor	7.810
3	Cable, Primary, Low Tension	7.360	13	Harness, Body Wiring	30.702
4	Cable, No. 4, 5 and 6, Spark Plug	7.360	14	Harness, Chassis Wiring	7.700
5	Cable, No. 3, Spark Plug	7.360	15	Cable, Horn Blowing Ring	7.536
6	Cable, No. 2, Spark Plug	7.360	16	Cable, Starting Motor to Solenoid	7.265
7	Cable, No. 1, Spark Plug	7.360	17	Harness, Generator to Voltage Regulator	7.470
8	Cable, Secondary, High Tension	7.360	18	Cable, Battery to Solenoid	7.510
9	Cable and Socket, Glove Compartment	30.710	19	Strap, Battery Ground	7.510
10	Harness, Clock Wiring	40.136	20	Cable, Parking Light	7.568

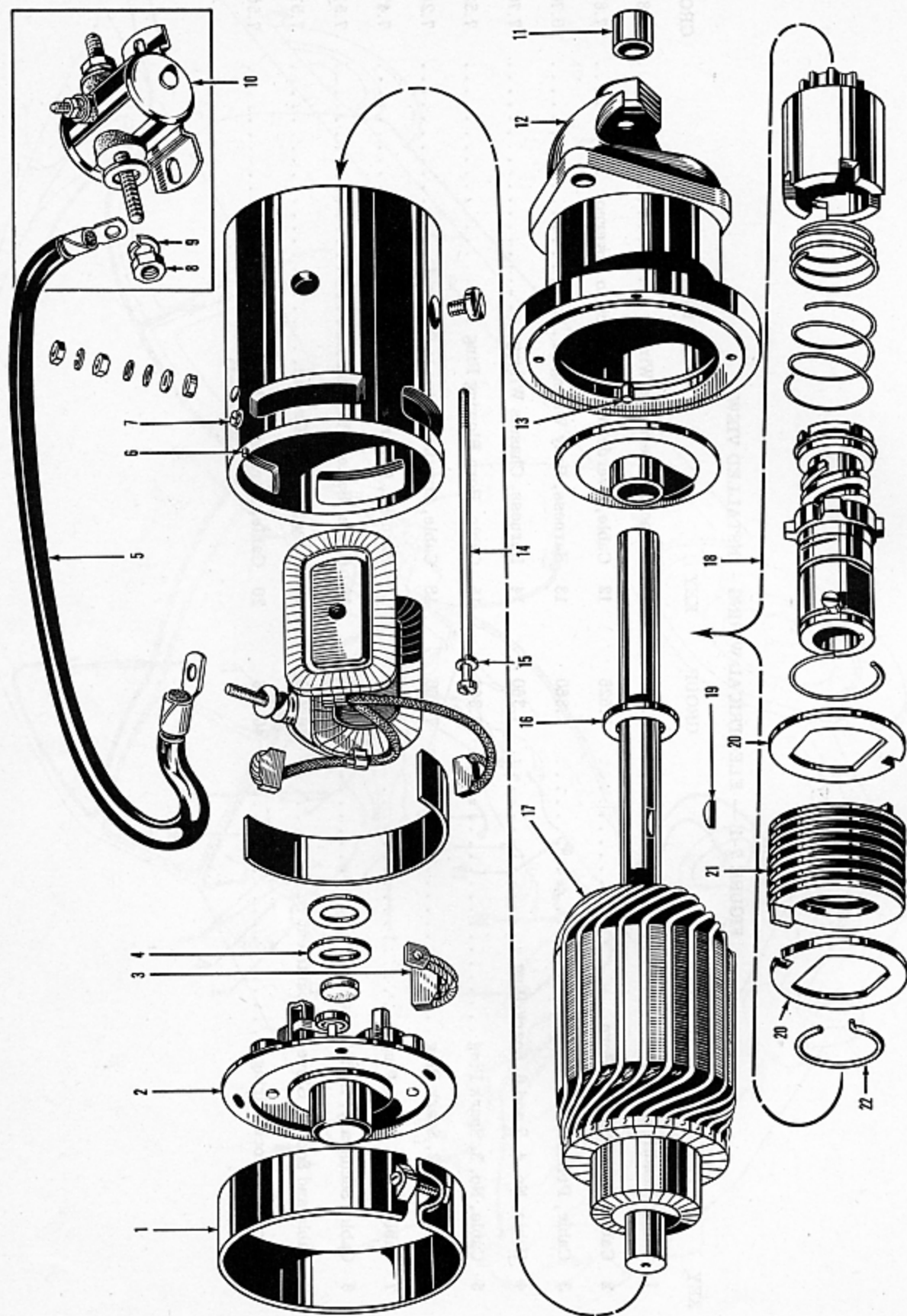


FIGURE 7-2 — TYPICAL STARTER - EXPLODED VIEW

FIGURE 7-2 — TYPICAL STARTER - EXPLODED VIEW

KEY	PART NAME	GROUP	KEY	PART NAME	GROUP
1	Band, Cover . . . . .	7.238	12	Housing, Drive . . . . .	7.242
2	Plate, Commutator End . . . . .	7.234	13	Dowel Pin, Drive Housing . . . . .	7.242
3	Brush, Motor . . . . .	7.236	14	Bolt, Thru. . . . .	7.234
4	Thrustwasher, Commutator End . . . . .	7.224	15	Lockwasher. . . . .	7.234
5	Cable, Solenoid to Starter Motor . . . . .	7.265	16	Thrustwasher, Drive End . . . . .	7.224
6	Dowel Pin, Commutator End Plate . . . . .	7.234	17	Armature . . . . .	7.224
7	Screw, Brush. . . . .	7.236	18	Drive, Bendix . . . . .	7.244
8	Nut . . . . .	7.265	19	Key . . . . .	7.244
9	Lockwasher . . . . .	7.265	20	Plate, Bendix Drive Spring Anchor . . . . .	7.244
10	Solenoid . . . . .	7.265	21	Spring, Bendix Drive. . . . .	7.244
11	Bushing, Drive Housing . . . . .	7.242	22	Lock Ring, Spring Anchor Plate . . . . .	7.244

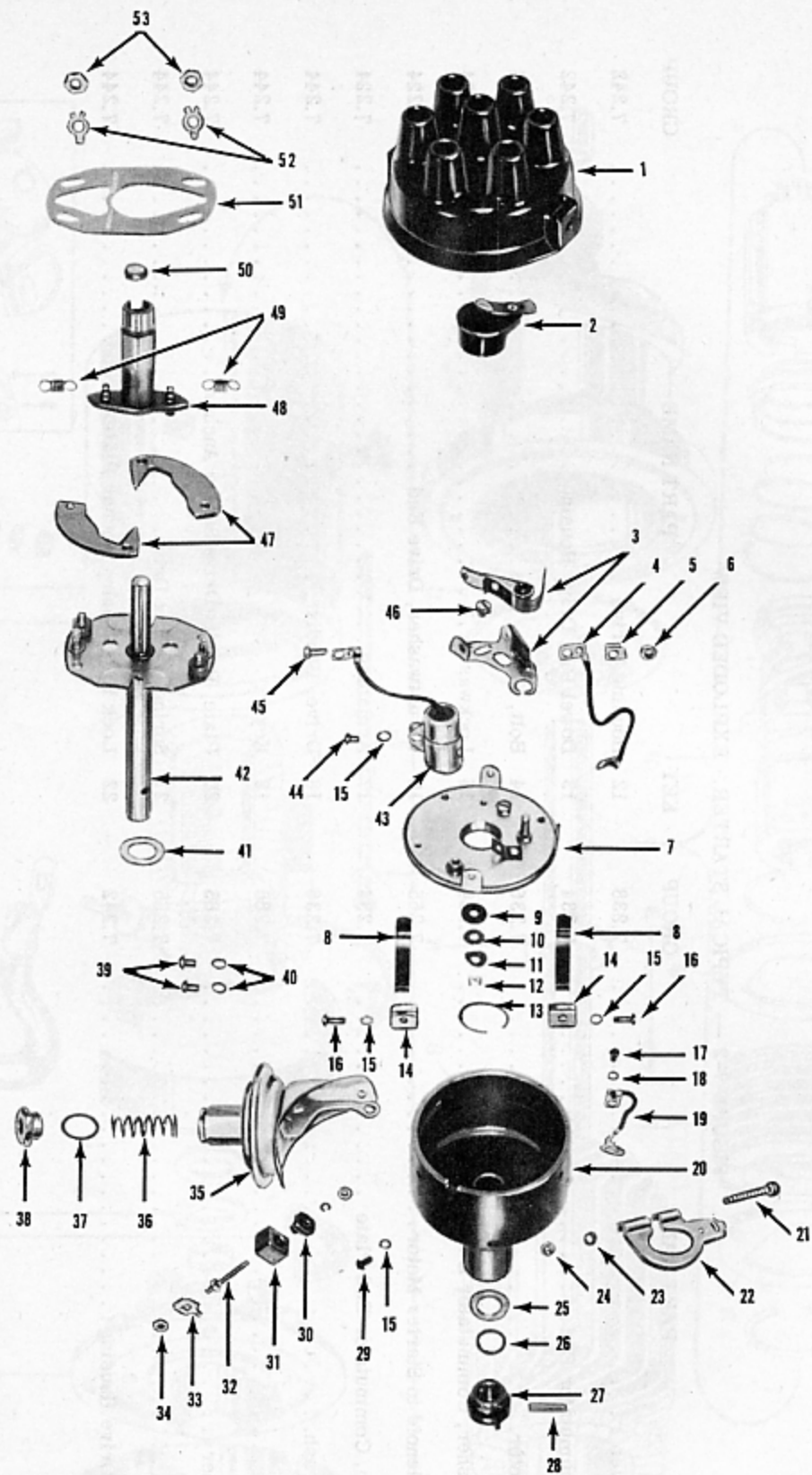


FIGURE 7-3 — TYPICAL DISTRIBUTOR - EXPLODED VIEW

FIGURE 7-3 — TYPICAL DISTRIBUTOR - EXPLODED VIEW

KEY	PART NAME	GROUP
1	Cap, Distributor . . . . .	7.302
2	Rotor, Distributor . . . . .	7.332
3	Point Set, Breaker . . . . .	7.316
4	Lead, Terminal Connector . . . . .	7.310
5	Lock Clip, Breaker Point Set . . . . .	7.316
6	Nut, Breaker Point Set . . . . .	7.316
7	Plate, Distributor Breaker . . . . .	7.310
8	Spring, Distributor Base . . . . .	7.302
9	Washer (Fiber) Breaker Plate . . . . .	7.310
10	Springwasher, Breaker Plate . . . . .	7.310
11	Shim, Breaker Plate . . . . .	7.310
12	Washer, Breaker Plate . . . . .	7.310
13	Retainer, Breaker Plate . . . . .	7.310
14	Support, Spring . . . . .	7.302
15	Lockwasher, Spring Support . . . . .	7.302
16	Screw, Spring Support . . . . .	7.302
17	Screw, Vacuum Chamber to Arm . . . . .	7.334
18	Lockwasher, Vacuum Chamber to Arm . . . . .	7.334
19	Lead, Ground . . . . .	7.310
20	Base, Distributor . . . . .	7.302
21	Bolt, Advance Arm . . . . .	7.308
22	Arm, Advance . . . . .	7.308
23	Lockwasher, Advance Arm Bolt . . . . .	7.308
24	Nut, Advance Arm Bolt . . . . .	7.308
25	Spacer, Drive Shaft Coupling . . . . .	7.330
26	Shim, Drive Shaft Coupling . . . . .	7.330
27	Coupling, Drive Shaft . . . . .	7.330
28	Pin, Drive Shaft Coupling . . . . .	7.330
29	Screw, Breaker Plate . . . . .	7.310
30	Bushing, Terminal Stud, Inner . . . . .	7.300
31	Bushing, Terminal Stud, Outer . . . . .	7.300
32	Stud, Terminal . . . . .	7.300
33	Lock Clip, Distributor Terminal . . . . .	7.300
34	Nut, Distributor Terminal . . . . .	7.300
35	Chamber, Vacuum . . . . .	7.334
36	Spring, Vacuum Chamber . . . . .	7.338
37	Gasket, Vacuum Chamber . . . . .	7.338
38	Coupling, Vacuum Chamber . . . . .	7.338
39	Screw, Vacuum Chamber to Base . . . . .	7.334
40	Lockwasher, Vacuum Chamber to Base . . . . .	7.334
41	Spacer, Breaker Plate to Base . . . . .	7.324
42	Shaft and Plate, Distributor . . . . .	7.324
43	Condenser, Distributor . . . . .	7.318
44	Screw, Condenser . . . . .	7.318
45	Screw, Breaker Arm Spring . . . . .	7.316
46	Screw, Breaker Point to Contact Plate . . . . .	7.316
47	Governor Weight, Drive Shaft . . . . .	7.324
48	Cam and Shaft, Distributor . . . . .	7.332
49	Spring, Shaft and Governor Weight . . . . .	7.324
50	Wick, Cam and Shaft . . . . .	7.332
51	Plate, Governor Weight Hold Down . . . . .	7.324
52	Lockwasher, Weight Hold Down Plate . . . . .	7.324
53	Nut, Weight Hold Down Plate . . . . .	7.324

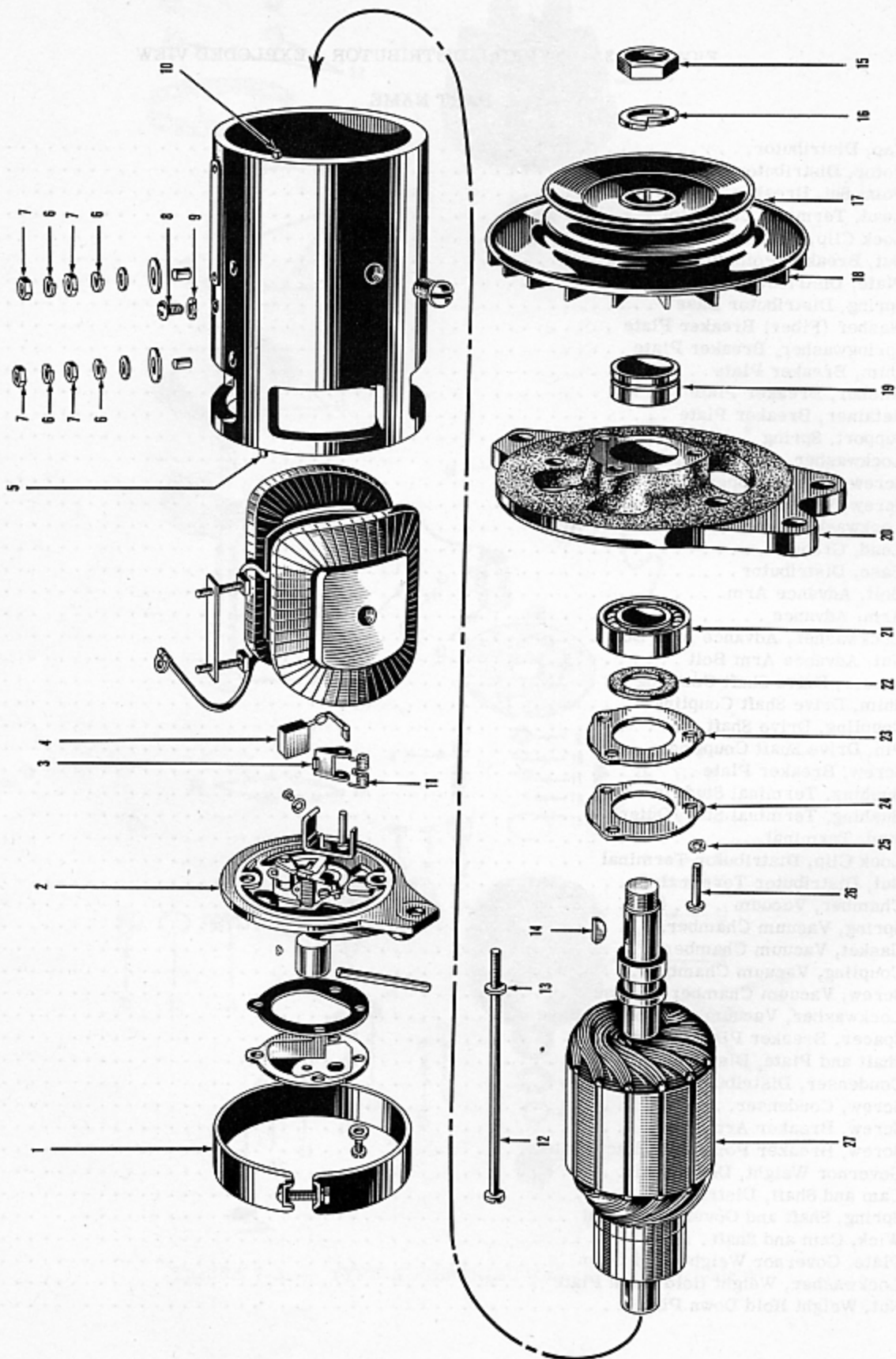


FIGURE 7-4 — TYPICAL GENERATOR - EXPLODED VIEW

FIGURE 7-4 — TYPICAL GENERATOR - EXPLODED VIEW

KEY	PART NAME	GROUP	KEY	PART NAME	GROUP
1	Band, Generator Cover	7.426	15	Nut	7.434
2	Plate, Commutator End	7.412	16	Lockwasher	7.434
3	Arm, Generator Brush	7.420	17	Pulley, Drive	7.434
4	Brush, Generator	7.420	18	Fan, Pulley	7.434
5	Dowel Pin	7.412	19	Collar, Outer	7.428
6	Lockwasher	7.402	20	Plate, Drive End	7.428
7	Nut	7.402	21	Bearing, Drive End	7.428
8	Screw	7.400	22	Spacer, Inner	7.428
9	Lockwasher	7.400	23	Gasket, Bearing Retainer Plate	7.428
10	Dowel Pin	7.428	24	Plate, Bearing Retainer	7.428
11	Spring, Generator Brush	7.420	25	Lockwasher, Bearing Retainer Plate	7.428
12	Bolt, Thru	7.412	26	Screw, Bearing Retainer Plate	7.428
13	Lockwasher, Thru Bolt	7.412	27	Armature	7.402
14	Key	7.434			



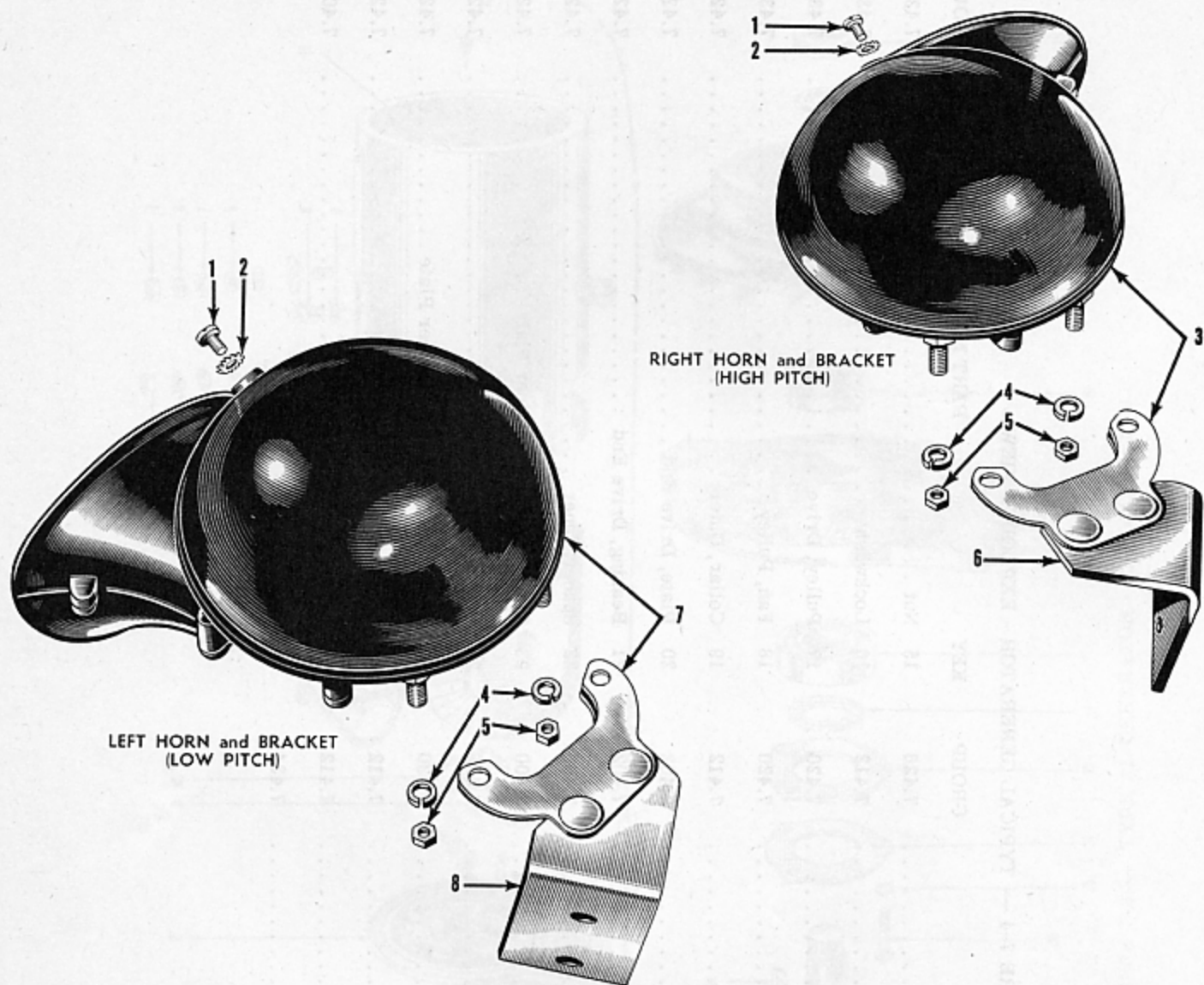


FIGURE 7-5 — TYPICAL HORNS

KEY	PART NAME	GROUP
1	Screw, Horn Cable Terminal . . . . .	7.520
2	Lockwasher, Horn Cable Terminal . . . . .	7.520
3	Horn Assembly, Right, High Pitch . . . . .	7.520
4	Lockwasher, Horn to Bracket . . . . .	7.520
5	Nut, Horn to Bracket . . . . .	7.520
6	Bracket, Horn Mounting, Right . . . . .	7.520
7	Horn Assembly, Left, Low Pitch . . . . .	7.520
8	Bracket, Horn Mounting, Left . . . . .	7.520

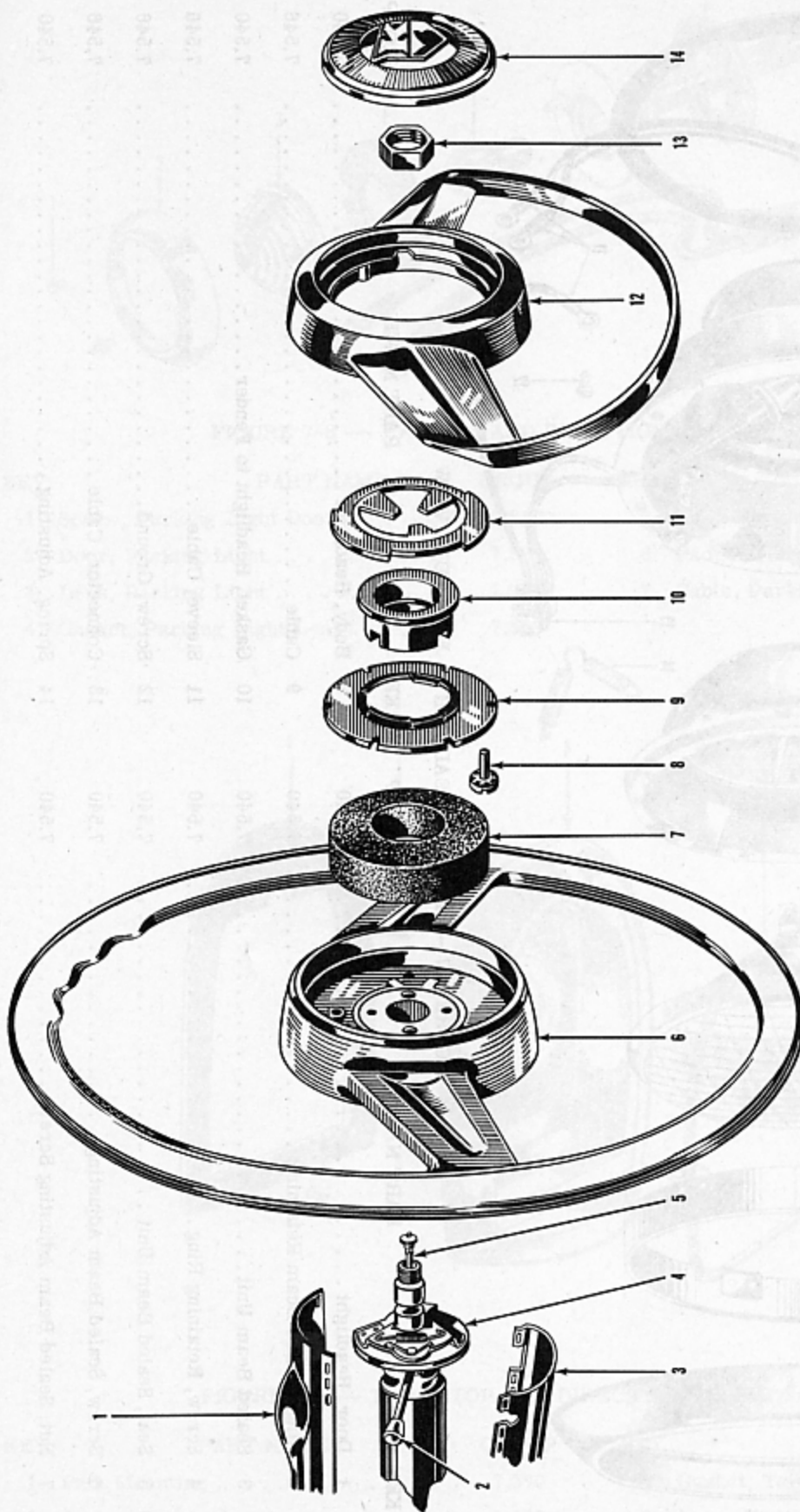


FIGURE 7-6 — HORN BLOWING MECHANISM - EXPLODED VIEW

KEY	PART NAME	GROUP	KEY	PART NAME	GROUP
1	Cover, Steering Gear Jacket, Upper . . . . .	14.122	8	Screw with L/W, Spacer to Horn Blowing Ring. . . . .	7.527
2	Lever, Direction Signal Light Switch . . . . .	7.626	9	Spacer, Horn Blowing Plate . . . . .	7.527
3	Cover, Steering Gear Jacket, Lower . . . . .	14.122	10	Cup, Horn Blowing Ground . . . . .	7.527
4	Switch, Directional Signal Light . . . . .	7.620	11	Plate, Horn Blowing Contact . . . . .	7.527
5	Cable, Horn Blowing . . . . .	7.536	12	Ring, Horn Blowing . . . . .	7.527
6	Wheel Assembly, Steering . . . . .	14.126	13	Nut, Wheel to Steering Gear Shaft . . . . .	14.126
7	Pad, Contact (Rubber) . . . . .	7.527	14	Medallion . . . . .	7.527

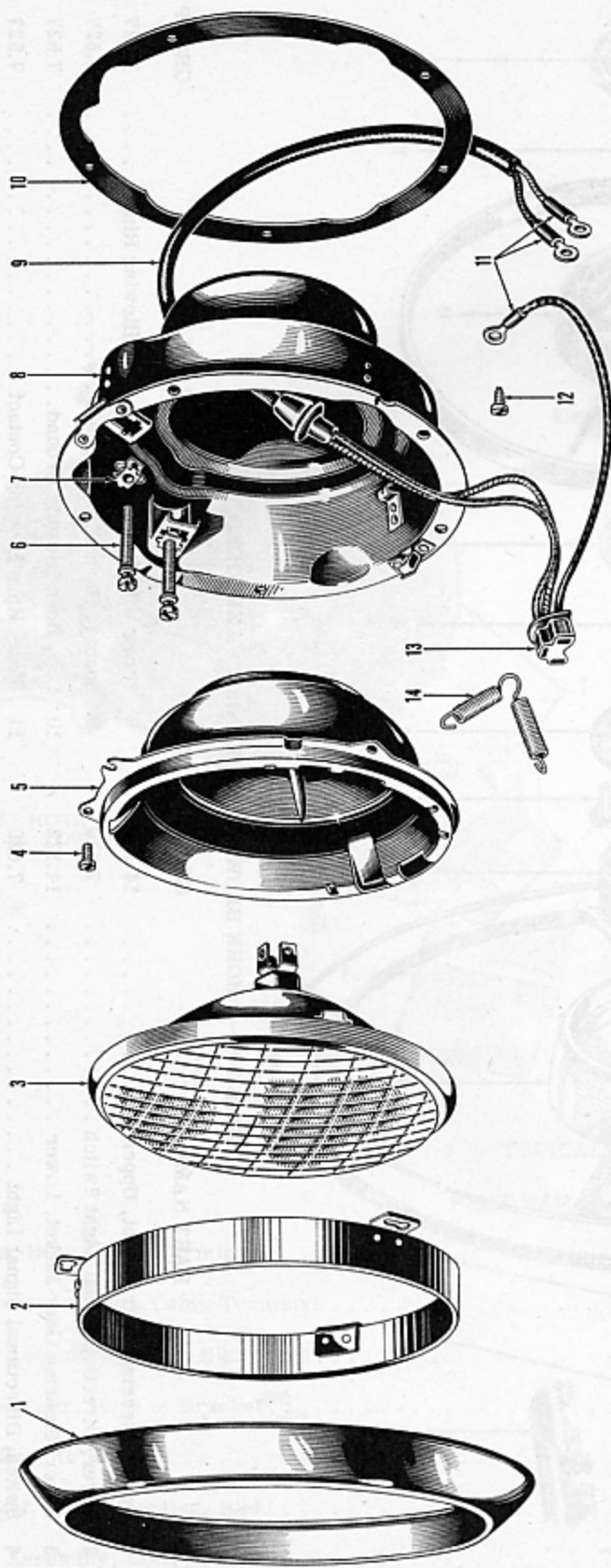


FIGURE 7-7 — TYPICAL HEADLIGHT - EXPLODED VIEW

KEY	PART NAME	GROUP	KEY	PART NAME	GROUP
1	Door, Headlight . . . . .	7.540	8	Body, Headlight . . . . .	7.540
2	Ring, Sealed Beam Retaining . . . . .	7.540	9	Cable . . . . .	7.546
3	Sealed Beam Unit . . . . .	7.540	10	Gasket, Headlight to Fender . . . . .	7.540
4	Screw, Retaining Ring . . . . .	7.540	11	Sleeve, Cable . . . . .	7.546
5	Seat, Sealed Beam Unit . . . . .	7.540	12	Screw, Ground . . . . .	7.546
6	Screw, Sealed Beam Adjusting . . . . .	7.540	13	Connector, Cable . . . . .	7.546
7	Nut, Sealed Beam Adjusting Screw . . . . .	7.540	14	Spring, Adjusting . . . . .	7.540

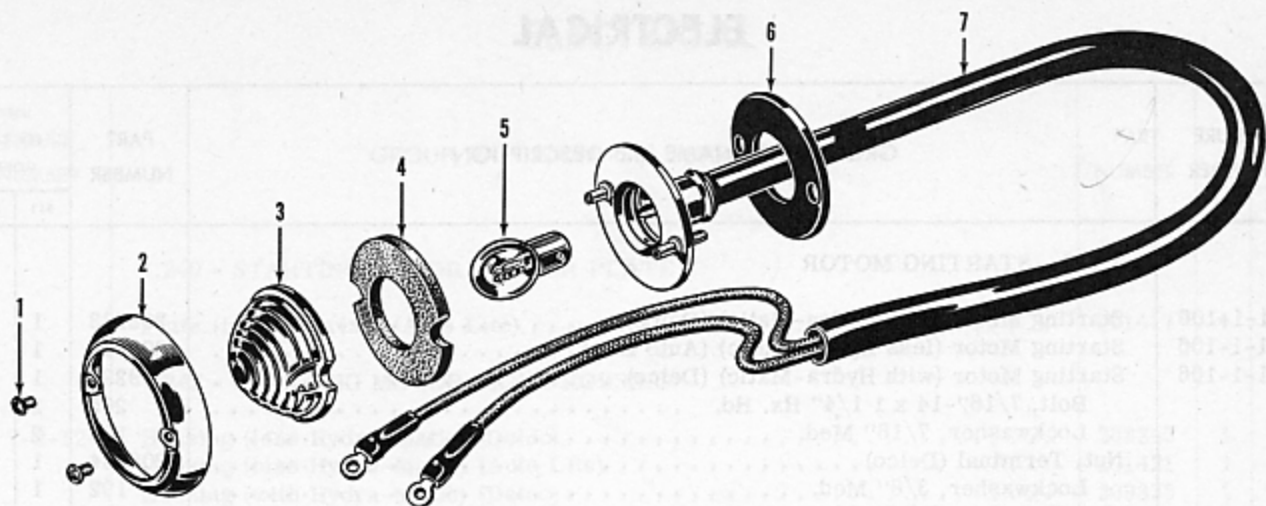


FIGURE 7-8 — PARKING AND DIRECTIONAL LIGHT - EXPLODED VIEW

KEY	PART NAME	GROUP	KEY	PART NAME	GROUP
1	Screw, Parking Light . . . . .	7.563	5	Bulb, Parking and Directional Light. .	7.564
2	Door, Parking Light . . . . .	7.563	6	Pad, Parking Light Mounting . . . . .	7.560
3	Lens, Parking Light . . . . .	7.563	7	Cable, Parking Light . . . . .	7.568
4	Gasket, Parking Light Lens . . . . .	7.563			

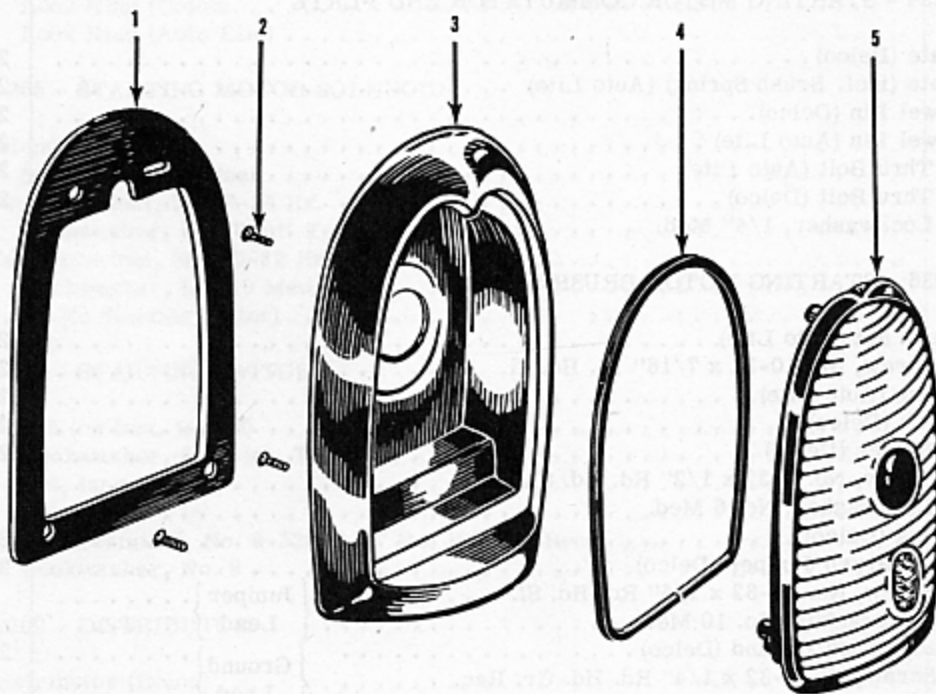


FIGURE 7-9 — TAIL, STOP AND DIRECTIONAL LIGHT - EXPLODED VIEW

KEY	PART NAME	GROUP	KEY	PART NAME	GROUP
1	Pad, Mounting . . . . .	7.570	4	Gasket, Tail Light Lens . . . . .	7.572
2	Screw, Tail Light Lens . . . . .	7.572	5	Lens, Tail Light, Left. . . . .	7.572
3	Body, Tail Light, Left. . . . .	7.571			

## ELECTRICAL

FIGURE NUMBER	GROUP, PART NAME and DESCRIPTION	PART NUMBER	USED PER CAR MODEL	
			511	512
	<b>7.222 - STARTING MOTOR</b>			
1-1-106	Starting Motor (less Hydra-Matic) (Delco) . . . . .	208233	1	1
1-1-106	Starting Motor (less Hydra-Matic) (Auto Lite) . . . . .	204753	1	1
1-1-106	Starting Motor (with Hydra-Matic) (Delco) . . . . .	209293	1	1
	Bolt, 7/16"-14 x 1 1/4" Hx. Hd. . . . .	265	2	2
	Lockwasher, 7/16" Med. . . . .	193	2	2
	Nut, Terminal (Delco) . . . . .	208234	1	1
	Lockwasher, 3/8" Med. . . . .	192	1	1
	Nut, Terminal, 5/16"-24 Hx. (Auto Lite) . . . . .	189	1	1
	Lockwasher, 5/16" Med. . . . .	240	1	1
	<b>7.224 - STARTING MOTOR ARMATURE</b>			
7-2-17	Armature (Delco) . . . . .	208235	1	1
	Armature (Auto Lite) . . . . .	201412	1	1
7-2-4	Thrustwasher (Commutator End) (Delco) . . . . .	208236	1	1
7-2-16	Thrustwasher (Drive End) (Delco) . . . . .	208237	1	1
	Thrustwasher, 1/64" Thick (Auto Lite) . . . . .	201415	1	1
	Thrustwasher, 1/32" Thick (Auto Lite) . . . . .	201414	1	1
	Thrustwasher, 3/64" Thick (Auto Lite) . . . . .	201416	1	1
	Thrustwasher (Commutator End) (Auto Lite) . . . . .	201413	1	1
	<b>7.234 - STARTING MOTOR COMMUTATOR END PLATE</b>			
7-2-2	Plate (Delco) . . . . .	208238	1	1
	Plate (incl. Brush Spring) (Auto Lite) . . . . .	201403	1	1
7-2-6	Dowel Pin (Delco) . . . . .	208301	1	1
	Dowel Pin (Auto Lite) . . . . .	201404	2	2
	Thru Bolt (Auto Lite) . . . . .	201405	2	2
7-2-14	Thru Bolt (Delco) . . . . .	208240	2	2
7-2-15	Lockwasher, 1/4" Med. . . . .	190	2	2
	<b>7.236 - STARTING MOTOR BRUSH SET</b>			
	Brush Set (Auto Lite) . . . . .	201406	1	1
	Screw, No. 10-32 x 7/16" Fl. Hd. Sl. . . . .	201408	2	2
	Spring (Auto Lite) . . . . .	201407	4	4
7-2-3	Brush (Delco) . . . . .	208594	4	4
	Holder (Delco) . . . . .	208241	4	4
7-2-7	Screw, No. 6-32 x 1/2" Rd. Hd. Sl. . . . .	404	4	4
	Lockwasher, No. 6 Med. . . . .	774	4	4
	Spring (Delco) . . . . .	208242	4	4
	Lead, Brush Jumper (Delco) . . . . .	208243	1	1
	Screw, No. 10-32 x 1/4" Rd. Hd. Sl. . . . .	334	1	1
	Lockwasher, No. 10 Med. . . . .	254	1	1
	Lead, Brush Ground (Delco) . . . . .	212974	2	2
	Screw, No. 8-32 x 1/4" Rd. Hd. Cr. Rec. . . . .	357	2	2
	Lockwasher, No. 8 Med. . . . .	253	2	2
	<b>7.238 - STARTING MOTOR COVER BAND</b>			
7-2-1	Band (Delco) . . . . .	208244	1	1
	Band (Auto Lite) . . . . .	201409	1	1
	Screw, No. 10-32 x 1 1/2" Rd. Hd. Sl. . . . .	201410	1	1
	Nut, No. 10-32 Sq. . . . .	201411	1	1

## ELECTRICAL

7

FIGURE NUMBER	GROUP, PART NAME and DESCRIPTION	PART NUMBER	USED PER CAR MODEL	
			511	512
	<b>7.240 - STARTING MOTOR CENTER PLATE</b>			
	Plate (incl. Bearing) (Auto Lite) . . . . .	201417	1	1
	<b>7.242 - STARTING MOTOR DRIVE HOUSING</b>			
7-2-12	Housing (less Hydra-Matic) (Delco) . . . . .	208245	1	1
	Housing (less Hydra-Matic) (Auto Lite) . . . . .	201421	1	1
	Housing (with Hydra-Matic) (Delco) . . . . .	209335	1	1
7-2-13	Dowel Pin (Delco) . . . . .	208309	1	1
	Dowel Pin (Auto Lite) . . . . .	201422	1	1
7-2-11	Bushing (Delco) . . . . .	208247	1	1
	Bearing (Auto Lite) . . . . .	201423	1	1
	<b>7.244 - STARTING MOTOR BENDIX DRIVE</b>			
7-2-18	Bendix Drive Complete (Delco) . . . . . <i>USE 201418</i>	208248	1	1
	Bendix Drive Complete (Auto Lite) . . . . .	201418	1	1
7-2-19	Key, 5/32" x 5/8" Woodruff No. 6 . . . . .	823	1	1
7-2-21	Spring, Drive (Delco) . . . . . <i>USE 201419</i>	208249	1	1
	Spring, Drive (Auto Lite) . . . . .	201419	1	1
7-2-20	Plate, Drive Spring Anchor (Delco) . . . . .	208250	2	2
	Plate, Drive Spring Anchor (Auto Lite) . . . . .	206272	2	2
7-2-22	Lock Ring (Delco) . . . . . <i>USE 206273</i>	208251	1	1
	Lock Ring (Auto Lite) . . . . .	206273	1	1
	<b>7.265 - STARTING MOTOR SOLENOID</b>			
7-2-10	Solenoid . . . . .	204752	1	1
	Screw, Washer Head . . . . .	207542	2	2
7-2-8	Nut, Terminal, 5/16"-24 Hx. . . . .	189	2	2
7-2-9	Lockwasher, 5/16" Int. Tooth . . . . .	200	2	2
	Nut, Terminal, No. 10-32 Hx. . . . .	202	1	1
	Lockwasher, No. 10 Med. . . . .	254	1	1
7-2-5	Cable (to Starting Motor) . . . . .	208586	1	1
	<b>7.270 - STARTING SWITCH</b>			
19-1-1	Switch (on Inst. Board) . . . . .	201464	1	1
	Lockwasher, 5/8" Int. Tooth . . . . .	308	1	1
	Nut, Inner . . . . .	201465	1	1
	Nut, Outer . . . . .	207758	1	1
	Screw, Terminal, No. 8-32 x 1/2" Rd. Hd. Cr. Rec. . . . .	357	2	2
	Lockwasher, No. 8 . . . . .	201356	2	2
	<b>7.300 - DISTRIBUTOR</b>			
1-1-110	Distributor (Delco) . . . . .	208252	1	1
1-1-110	Distributor (Auto Lite) . . . . .	204757	1	1
	Bolt with L/W, 1/4"-20 x 5/8" Hx. Hd. . . . .	206334	1	1
	Flatwasher, 1/4" Sm. . . . .	243	1	1
7-3-32	Stud, Terminal(Delco) . . . . .	213070	1	1
7-3-30	Bushing, Terminal, Inner(Delco) . . . . .	213071	1	1
7-3-31	Bushing, Terminal, Outer (Delco) . . . . .	213072	1	1

## ELECTRICAL

FIGURE NUMBER	GROUP, PART NAME and DESCRIPTION	PART NUMBER	USED PER CAR MODEL	
			511	512
	<b>7.300 - DISTRIBUTOR (Cont'd)</b>			
7-3-33	Lock Clip (Delco) . . . . .	208253	1	1
7-3-34	Nut, Terminal, No. 8-32 Hx. (Delco) . . . . .	272	1	1
	Screw, Terminal (Auto Lite) . . . . .	200977	1	1
	Lockwasher, No. 10 Med. . . . .	254	1	1
	<b>7.302 - DISTRIBUTOR CAP</b>			
7-3-1	Cap (Delco) . . . . .	208254	1	1
	Cap (Auto Lite) . . . . .	200970	1	1
	Plug (Delco) . . . . .	208255	1	1
	Plug (Auto Lite) . . . . .	200971	1	1
7-3-8	Spring (to Base) (Delco) . . . . .	208256	2	2
7-3-14	Support (Spring to Cap) (Delco) . . . . .	208257	2	2
7-3-16	Screw, No. 8-32 x 3/8" Rd. Hd. Cr. Rec. . . . .	599	2	2
7-3-15	Lockwasher, No. 8 Med. . . . .	253	2	2
7-3-20	Base (Housing) (Delco) . . . . .	208258	1	1
	Base (Auto Lite) . . . . .	200937	1	1
	Plug, Pipe, 1/8" Pipe Thd. Hd'ls. Sl. (Delco) . . . . .	527	1	1
	Bushing (Delco) . . . . .	208259	1	1
	Bushing (Auto Lite) . . . . .	200938	2	2
	Oiler (Auto Lite) . . . . .	200941	1	1
	Wick (Auto Lite) . . . . .	200940	1	1
	<b>7.308 - DISTRIBUTOR ADVANCE ARM</b>			
7-3-22	Arm (Delco) . . . . .	208260	1	1
7-3-21	Bolt, 1/4"-20 x 2" Fil. Hd. Sl. . . . .	907	1	1
7-3-23	Lockwasher, 1/4" Med. . . . .	190	1	1
7-3-24	Nut, 1/4"-20 Hx. . . . .	203	1	1
7-3-24	Nut, 1/4"-20 Notched Hd. . . . .	213065	1	1
	Arm (Auto Lite) . . . . .	200972	1	1
	Bolt, 1/4"-20 x 5/8" Hx. Hd. . . . .	257	1	1
	Flatwasher, 1/4" . . . . .	243	1	1
	Lockwasher, 1/4" . . . . .	190	1	1
	<b>7.310 - DISTRIBUTOR BREAKER PLATE</b>			
	Plate Complete (Auto Lite) . . . . .	204758	1	1
	Screw, No. 10-32 x 5/16" Fil. Hd. Sl. . . . .	258	2	2
	Lockwasher, No. 10 . . . . .	259	2	2
	Clamp, Upper Plate . . . . .	200952	2	2
7-3-7	Plate (Delco) . . . . .	208261	1	1
7-3-29	Screw, No. 8-32 x 5/16" Rd. Hd. Cr. Rec. . . . .	581	1	1
	Lockwasher, No. 8 Med. . . . .	253	1	1
7-3-9	Washer (Fiber) (Delco) . . . . .	208262	1	1
7-3-10	Springwasher (Delco) . . . . .	208263	1	1
7-3-11	Shim, .010 Thick (Delco) . . . . .	208264	*	*
7-3-12	Washer, Clamp (Delco) . . . . .	208265	1	1
7-3-13	Retainer (Delco) . . . . .	208266	*	*
7-3-19	Lead, Ground (incl. Terminals) (Delco) . . . . .	208267	1	1
7-3-4	Lead, Terminal Connector (incl. Terminals) (Delco) . . . . .	208268	1	1
	Lead (incl. Terminals) (Auto Lite) . . . . .	204030	1	1

\* As Required

## ELECTRICAL

7

FIGURE NUMBER	GROUP, PART NAME and DESCRIPTION	PART NUMBER	USED PER CAR MODEL	
			511	512
	<b>7.310 - DISTRIBUTOR BREAKER PLATE (Cont'd)</b>			
	Lead (incl. Terminals) (Auto Lite) . . . . .	200961	1	1
	Screw, No. 6-32 x 5/32" Fil. Hd. Sl. . . . .	200962	3	3
	Lockwasher, No. 6 . . . . .	204031	3	3
	Cover, Terminal Slot (Auto Lite) . . . . .	200964	1	1
	<b>7.316 - DISTRIBUTOR BREAKER POINT SET</b>			
7-3-3	Point Set (Delco) . . . . .	208520	1	1
7-3-45	Screw . . . . .	208271	1	1
7-3-6	Nut . . . . .	208272	1	1
7-3-5	Clip . . . . .	208273	1	1
7-3-46	Screw, Contact Plate. . . . .	208274	1	1
	Point Set (Auto Lite) . . . . .	200953	1	1
	Screw, No. 8-32 x 3/16" Fil. Hd. Sl. . . . .	200955	1	1
	Lockwasher, No. 8 . . . . .	315	1	1
	Clip (Auto Lite) . . . . .	200954	1	1
	Screw, No. 6-32 x 5/16" Rd. Hd. Sl. . . . .	200958	1	1
	Flatwasher, No. 6 . . . . .	200957	1	1
	<b>7.318 - DISTRIBUTOR CONDENSER</b>			
7-3-43	Condenser (Delco) . . . . .	208275	1	1
7-3-44	Screw, No. 8-32 x 3/16" Rd. Hd. Sl. . . . .	908	1	1
	Lockwasher, No. 8 Med. . . . .	253	1	1
	Condenser (Auto Lite) . . . . .	200959	1	1
	Screw, No. 6-32 x 5/32" Fil. Hd. Sl. . . . .	200962	1	1
	Lockwasher, No. 6 . . . . .	204031	1	1
	<b>7.324 - DISTRIBUTOR DRIVE SHAFT AND GOVERNOR</b>			
7-3-42	Shaft and Plate (Delco) . . . . .	208276	1	1
	Shaft (Auto Lite) . . . . .	204759	1	1
7-3-47	Governor Weight (Delco) . . . . .	208277	2	2
	Governor Weight (Auto Lite) . . . . .	204760	2	2
	Thrustwasher, Upper (Auto Lite) . . . . .	200944	1	1
	Thrustwasher, Lower (Auto Lite) . . . . .	200943	1	1
	Spring Set, Governor Weight (Auto Lite) . . . . .	204761	1	1
	Spring, Anti-Rattle (Auto Lite) . . . . .	200948	1	1
7-3-49	Spring (Delco) . . . . .	208278	2	2
7-3-51	Plate, Weight Hold Down (Delco) . . . . .	208279	1	1
7-3-41	Spacer (Plate to Base) (Delco) . . . . .	208280	1	1
7-3-52	Lockwasher. . . . .	208281	2	2
7-3-53	Nut, No. 10-32 Hx. . . . .	202	2	2
	<b>7.330 - DISTRIBUTOR DRIVE SHAFT COUPLING</b>			
7-3-27	Coupling (Delco) . . . . .	208282	1	1
	Coupling (Auto Lite) . . . . .	204762	1	1
	Pin (Auto Lite) . . . . .	200946	1	1
7-3-28	Pin (Delco) . . . . .	208283	1	1
7-3-25	Spacer (Delco) . . . . .	208280	1	1
	Shim (.005 Thick) (Delco) . . . . .	208284	*	*
7-3-26	Shim (.010 Thick) (Delco) . . . . .	208285	*	*

\* As Required



## ELECTRICAL

FIGURE NUMBER	GROUP, PART NAME and DESCRIPTION	PART NUMBER	USED PER CAR MODEL	
			511	512
	<b>7.332 - DISTRIBUTOR CAM</b>			
7-3-48	Cam and Shaft (Delco) . . . . .	208286	1	1
	Cam and Shaft (Auto Lite) . . . . .	204763	1	1
	Spacer (Auto Lite) . . . . .	200966	1	1
	Snap Ring (Auto Lite) . . . . .	200967	1	1
	Felt (Auto Lite) . . . . .	200968	1	1
7-3-50	Wick (in Cam) (Delco) . . . . .	208287	1	1
7-3-2	Rotor (Delco) . . . . .	208288	1	1
	Rotor (Auto Lite) . . . . .	200969	1	1
	<b>7.334 - DISTRIBUTOR VACUUM CHAMBER</b>			
	Chamber (Auto Lite) . . . . .	200976	1	1
	Screw, No. 10-32 x 1/4" Fil. Hd. Sl. . . . .	200977	1	1
	Lockwasher, No. 10 . . . . .	259	1	1
7-3-35	Chamber (Delco) . . . . .	208289	1	1
7-3-39	Screw, No. 10-32 x 1/4" Rd. Hd. Sl. . . . .	334	2	2
7-3-40	Lockwasher, No. 10 Med. . . . .	254	2	2
7-3-17	Screw, No. 6-32 x 1/4" Rd. Hd. Cr. Rec. . . . .	671	1	1
7-3-18	Lockwasher, No. 6 Med. . . . .	774	1	1
	<b>7.338 - DISTRIBUTOR VACUUM CHAMBER SPRING</b>			
7-3-36	Spring (Delco) . . . . .	208290	1	1
	Spring (Black) (Auto Lite) . . . . .	204764	1	1
	Washer, .010 . . . . .	202744	*	*
	Washer, .032 . . . . .	202743	*	*
	Washer, .065 . . . . .	202745	*	*
7-3-38	Coupling (Plug) (Delco) . . . . .	208291	1	1
7-3-37	Gasket (Delco) . . . . .	208292	1	1
	Plug (Auto Lite) . . . . .	202746	1	1
	Gasket, .031 (Auto Lite) . . . . .	202747	*	*
	Gasket, .072 (Auto Lite) . . . . .	202748	*	*
	<b>7.340 - DISTRIBUTOR VACUUM CHAMBER TUBE</b>			
3-3-8	Tube (Delco) . . . . .	207759	1	1
	Tube (Auto Lite) . . . . .	209519	1	1
	Nut, 3/8"-24 Hx. x 3/16" Inv. Fl. Tube . . . . .	202142	2	2
	Elbow (at Distributor) 3/8"-24 x 1/8" Pipe 90° x 3/16" Inv. Fl. Tube . . . . .	202126	1	1
	Connector (Carb. End) 3/8"-24 x 1/8" Pipe 3/16" Inv. Fl. Tube . . . . .	202127	*	*
	<b>7.342 - DISTRIBUTOR MOUNTING ADAPTER</b>			
1-1-107	Adapter . . . . .	207356	1	1
	Stud, 3/8"-16 x 1 3/8" . . . . .	200164	1	1
	Lockwasher, 3/8" Med. . . . .	192	1	1
	Nut, 3/8"-16 Hx. . . . .	204	1	1
	<b>7.344 - DISTRIBUTOR MAIN DRIVE SHAFT</b>			
	Shaft and Coupling . . . . .	200165	1	1

\* As Required

FIGURE NUMBER	GROUP, PART NAME and DESCRIPTION	PART NUMBER	USED PER CAR MODEL	
			511	512
			7.346 - IGNITION COIL	
1-1-109	Coil (Delco) . . . . .	208293	1	1
1-1-109	Coil (Auto Lite) . . . . .	204932	1	1
	Bolt, 1/4"-20 x 5/8" Hx. Hd. . . . .	257	2	2
	Lockwasher, 1/4" Int. Ext. Tooth . . . . .	400	2	2
	Nut, 1/4"-20 Hx. . . . .	203	2	2
	Nut, Terminal, No. 10-32 Hx. . . . .	202	2	2
	Lockwasher, No. 10 Ext. Tooth . . . . .	294	2	2
	Clamp, Terminal (Delco) . . . . .	208294	2	2
	Strap, Mounting (Delco) . . . . .	208295	1	1
	Screw, Clamp . . . . .	208296	1	1
	Bracket, Mounting . . . . .	209645	1	1
	Bracket, Mounting (used with Hydra-Matic) . . . . .	213085	1	1
	Bolt, 5/16"-18 x 1/2" Hx. Hd. . . . .	322	2	2
	Lockwasher, 5/16" Ext. Tooth . . . . .	348	2	2
7.350 - IGNITION SWITCH				
19-1-4	Switch . . . . .	207760	1	1
	Lockwasher, No. 10 Ext. Tooth . . . . .	294	2	2
	Nut, No. 10-32 Hx. . . . .	202	2	2
	Spring, Cylinder Ignition Switch Lock . . . . .	212826	1	1
	Bezel . . . . .	207761	1	1
	Nut, Terminal, No. 10-32 Hx. . . . .	202	2	2
	Lockwasher, No. 10 Ext. Tooth . . . . .	294	2	2
	Bracket . . . . .	207762	1	1
7.352 - IGNITION SWITCH LOCK CYLINDER AND KEY				
	Cylinder and Keys . . . . .	207343	1	1
	Key, Blank for Code No. K.F. 501 to 750 . . . . .	203882	*	*
	Key, Cut, Code No. K.F. 501 to 750 . . . . .	203887	*	*
	Cylinder and Key Kit . . . . .	207347	1	1
NOTE: Cylinder and Key Kit includes (1) Ignition Lock Cylinder, (1) Right Front Door Lock Cylinder, (1) Left Front Door Lock Cylinder and (2) Keys.				
7.360 - IGNITION CABLES				
	Cable, Primary (Low Tension) (Delco) . . . . .	208587	1	1
	Cable, Primary (Low Tension) (Auto Lite) . . . . .	200802	1	1
1-1-111	Cable, Secondary (High Tension) (Delco) . . . . .	208588	1	1
1-1-111	Cable, Secondary (High Tension) (Auto Lite) . . . . .	205325	1	1
	Nipple (at Coil) . . . . .	208589	1	1
	Nipple . . . . .	201171	1	1
1-1-1	Cable, No. 1 Spark Plug . . . . .	200796	1	1
1-1-2	Cable, No. 2 Spark Plug . . . . .	200797	1	1
1-1-3	Cable, No. 3 Spark Plug . . . . .	200798	1	1
1-1-112	Cable, No. 4, 5 and 6 Spark Plug . . . . .	200799	3	3
	Nipple . . . . .	201171	6	6

\* As Required

## ELECTRICAL

FIGURE NUMBER	GROUP, PART NAME and DESCRIPTION	PART NUMBER	USED PER CAR MODEL	
			511	512
	<b>7.375 - SPARK PLUG</b>			
1-1-11	Spark Plug (14MM) . . . . .	201230	6	6
	Gasket (14MM) . . . . .	202939	6	6
	<b>7.400 - GENERATOR</b>			
1-1-22	Generator (Auto Lite) . . . . .	212852	1	1
1-1-22	Generator (Delco) . . . . .	208297	1	1
	Bolt (Front Mounting) 5/16"-24 x 2 3/4" Hx. Hd. . . . .	889	1	1
	Bolt (Rear Mounting) 5/16"-24 x 1" Hx. Hd. . . . .	210	1	1
	Spacer . . . . .	208590	1	1
	Locknut, 5/16"-24 Hx. . . . .	326	2	2
7-4-8	Screw, Ground Terminal, 1/4"-20 x 5/16" Fil. Hd. Sl. (Delco) . . . . .	890	1	1
7-4-9	Lockwasher, 1/4" . . . . .	190	1	1
	Screw, Ground Terminal, No. 10-32 x 5/16" Rd. Hd. Sl. (Auto Lite). . . . .	266	1	1
	Lockwasher, No. 10 Med. . . . .	254	1	1
	<b>7.402 - GENERATOR ARMATURE</b>			
	Armature (Auto Lite) . . . . .	212559	1	1
7-4-27	Armature (Delco) . . . . .	208298	1	1
7-4-7	Nut, Terminal, No. 12-24 Hx. (Delco) . . . . .	502	2	2
7-4-6	Lockwasher . . . . .	208299	2	2
	<b>7.412 - GENERATOR COMMUTATOR END PLATE</b>			
7-4-2	Plate (Delco) . . . . .	208300	1	1
	Dowel Pin . . . . .	208301	1	1
7-4-12	Thru Bolt . . . . .	208302	2	2
7-4-13	Lockwasher, 5/16" Hy. . . . .	191	2	2
	Oiler (Hinge Lid) 1/4" . . . . .	208603	1	1
	<b>7.420 - GENERATOR BRUSH</b>			
	Brush Set (Auto Lite). . . . .	205857	1	1
7-4-4	Brush (Delco) . . . . .	208595	2	2
7-4-11	Spring . . . . .	208303	2	2
	Screw, No. 6-32 x 1/4" Rd. Hd. Cr. Rec. . . . .	671	2	2
	Lockwasher . . . . .	208304	2	2
7-4-3	Arm, Brush (Delco) . . . . .	208305	2	2
	Spacer . . . . .	208306	2	2
	<b>7.426 - GENERATOR COVER BAND</b>			
7-4-1	Band (Delco) . . . . .	208307	1	1
	Band (Auto Lite). . . . .	212561	1	1
	<b>7.428 - GENERATOR DRIVE END PLATE (DELCO)</b>			
7-4-20	Plate . . . . .	208308	1	1
7-4-10	Dowel Pin . . . . .	208309	1	1
	Oiler (Hinge Lid) 3/16" . . . . .	208604	1	1
7-4-21	Bearing . . . . .	208310	1	1

# ELECTRICAL

FIGURE NUMBER	GROUP, PART NAME and DESCRIPTION	PART NUMBER	USED PER CAR MODEL	
			511	512
	<b>7.428 - GENERATOR DRIVE END PLATE (DELCO) (Cont'd)</b>			
7-4-22	Spacer, Inner . . . . .	208311	1	1
7-4-19	Collar, Outer . . . . .	208312	1	1
	Seal . . . . .	208313	1	1
	Retainer . . . . .	208314	1	1
7-4-24	Plate, Bearing Retainer . . . . .	208315	1	1
7-4-23	Gasket . . . . .	208316	1	1
7-4-26	Screw . . . . .	208317	3	3
7-4-25	Lockwasher . . . . .	208318	3	3
	<b>7.434 - GENERATOR DRIVE PULLEY</b>			
7-4-17	Pulley (Delco) . . . . .	208605	1	1
	Pulley (Auto Lite) . . . . .	212855	1	1
7-4-18	Fan (Delco) . . . . .	208319	1	1
7-4-14	Key, 1/8" x 5/8" Woodruff No. 5 . . . . .	201454	1	1
7-4-15	Nut . . . . .	208320	1	1
7-4-16	Lockwasher . . . . .	208321	1	1
	<b>7.460 - GENERATOR ADJUSTING LINK</b>			
1-1-21	Link . . . . .	207447	1	1
	Bolt, 5/16"-18 x 7/8" Hx. Hd. . . . .	209	1	1
	Lockwasher, 5/16" Ext. Tooth . . . . .	348	1	1
	Bolt, 3/8"-16 x 7/8" Hx. Hd. . . . .	268	1	1
	Lockwasher, 3/8" Int. Tooth . . . . .	201	1	1
	Clip . . . . .	200172	1	1
	<b>7.465 - GENERATOR MOUNTING BRACKET</b>			
1-1-23	Bracket (Auto Lite) . . . . .	212877	1	1
1-1-23	Bracket (Delco) . . . . .	207448	1	1
	Bolt, 3/8"-16 x 7/8" Hx. Hd. . . . .	268	2	2
	Lockwasher, 3/8" Med. . . . .	192	2	2
	<b>7.470 - GENERATOR VOLTAGE REGULATOR</b>			
	Regulator (Auto Lite) . . . . .	201343	1	1
	Regulator (Delco) . . . . .	208322	1	1
	Bracket (Auto Lite) . . . . .	212854	1	1
	Screw, No. 14-10 x 3/4" Washer Hd. . . . .	207542	3	3
	Screw, Terminal, No. 10-32 x 5/16" Rd. Hd. Sl. (Auto Lite) . . . . .	266	3	3
	Lockwasher, No. 10 Int. Tooth . . . . .	259	3	3
	Screw, Terminal (Delco) . . . . .	208323	3	3
	Clamp . . . . .	208324	3	3
7-1-17	Harness, Generator to Voltage Regulator (Delco) . . . . .	208596	1	1
	Harness, Generator to Voltage Regulator (Auto Lite) . . . . .	212853	1	1
	<b>7.500 - STORAGE BATTERY</b>			
	Battery, serviced at any Battery Service Station.			
	Retainer . . . . .	207763	1	1
	Clip . . . . .	207764	2	2
	Bolt, 3/8"-16 x 6" Rd. Hd. Carriage . . . . .	892	2	2
	Wing Nut, 3/8"-16 . . . . .	269	2	2

## ELECTRICAL

FIGURE NUMBER	GROUP, PART NAME and DESCRIPTION	PART NUMBER	USED PER CAR MODEL	
			511	512
			7.510 - BATTERY CABLES	
7-1-19	Cable, Battery Ground . . . . .	212108	1	1
7-1-18	Cable, Battery to Starter Solenoid . . . . .	207766	1	1
	Bolt, 5/16"-18 x 1 5/16" Sq. Hd. . . . . { to . . . . .	201345	2	2
	Nut, 5/16"-18 Hx. . . . . { Battery } . . . . .	201346	2	2
	Bolt, 5/16"-18 x 1 5/16" Sq. Hd. . . . . { Battery Ground } . . . . .	201345	1	1
	Lockwasher, 5/16" Int. Ext. Tooth . . . . . { to Engine Front } . . . . .	226	1	1
	Nut, 5/16"-18 Hx. . . . . { End Plate } . . . . .	205	1	1
7.520 - HORNS				
7-5-3	Horn, Right, High Pitch (incl. Bracket) . . . . .	208597	1	1
7-5-7	Horn, Left, Low Pitch (incl. Bracket) . . . . .	208598	1	1
7-5-4	Lockwasher, 1/4" Med. . . . . { to . . . . .	190	4	4
7-5-5	Nut, 1/4"-28 Hx. . . . . { Bracket } . . . . .	261	4	4
7-5-6	Bracket, Right . . . . .	208599	1	1
7-5-8	Bracket, Left . . . . .	208600	1	1
7-5-1	Screw, Terminal, No. 8-32 x 1/4" Rd. Hd. Cr. Rec. . . . .	357	2	2
7-5-2	Lockwasher, No. 8 Ext. Tooth . . . . .	447	2	2
7.525 - HORN RELAY				
	Relay . . . . .	208521	1	1
	Screw, No. 14-10 x 3/4" Washer Hd. . . . .	207542	2	2
	Screw, Terminal, No. 8-32 x 1/4" Rd. Hd. Cr. Rec. . . . .	357	3	3
	Lockwasher, No. 8 Int. Tooth . . . . .	273	3	3
7-1-2	Harness, Relay to Horn . . . . .	208522	1	1
7.527 - HORN BLOWING MECHANISM				
7-6-14	Medallion (incl. Backing Plate) . . . . .	207767	1	1
	Bezel, Horn Medallion (Round Bosses) . . . . .	207769	1	
	Screw with L/W . . . . .	205269	3	
	Ring, Horn (Round Bosses) . . . . .	207770		1
4-7-12	Ring, Horn (Oval Bosses) . . . . .	212653	1	1
7-6-8	Screw with L/W . . . . .	205269		3
9-12-22	Ring, Trim (at Base of Steering Wheel) . . . . . { Hydra-Matic } . . . . .	207771	1	1
9-12-23	Screw, No. 10-12 x 3/8" Rd. Hd. Cr. Rec. . . . . { only on } . . . . .			
	Tap. (Chrome) . . . . . { 512 Models } . . . . .	875	3	3
	Ring, Contact . . . . .	207772	1	1
	Spacer, Contact Ring (3.812 Dia.) . . . . .	207773	1	1
7-6-9	Spacer, Contact Ring (3.438 Dia.) . . . . .	212088	1	1
	Plate, Contact (to Steering Column) . . . . .	207774	1	1
7-6-11	Plate, Horn Blowing Contact . . . . .	212087	1	1
	Spring, Ground . . . . .	209517	1	1
	Plate, Ground Spring . . . . .	209518	1	1
	Pad, Contact (Black Rubber) . . . . .	207775	1	
7-6-7	Pad, Contact (Red Rubber) . . . . .	207776		1
7-6-10	Cup, Horn Blowing Ground . . . . .	212086	1	1
	Washer, Contact Horn Blowing Terminal . . . . .	212775	1	1
7.536 - HORN BLOWING RING CABLE				
7-6-5	Cable (incl. Terminals) . . . . .	207777	1	1

# ELECTRICAL

7

FIGURE NUMBER	GROUP, PART NAME and DESCRIPTION	PART NUMBER	USED PER CAR MODEL	
			511	512
	<b>7.536 - HORN BLOWING RING CABLE (Cont'd)</b>			
	Washer, Terminal . . . . .	207778	1	1
	Terminal, Plug Type, 14-16 Gauge Wire . . . . .	201214	1	1
	Plate, Terminal . . . . .	207779	1	1
	<b>7.540 - HEADLIGHT</b>			
	Headlight . . . . .	207780	2	2
7-7-8	Body, Headlight . . . . .	201523	2	2
	Screw, No. 12-11 x 1/2" Pan Hd. Cr. Rec. Tap. . . . .	765	10	10
	Lockwasher, 1/4" Ext. Tooth . . . . .	370	10	10
7-7-10	Gasket (to Fender) . . . . .	200806	2	2
7-7-1	Door . . . . .	200807	2	2
	Screw, No. 10-32 x 1/2" Ov. Hd. . . . .	200808	2	2
7-7-3	Sealed Beam Unit . . . . .	200810	2	2
7-7-5	Seat (incl. Screws) . . . . .	200811	2	2
7-7-14	Spring . . . . .	200813	4	4
7-7-2	Retaining Ring . . . . .	200812	2	2
7-7-4	Screw, No. 8-32 x 5/16" Fil. Hd. Sl. . . . .	201436	6	6
7-7-6	Screw, Beam Adjusting . . . . .	200814	4	4
7-7-7	Nut, 1/4"-28 . . . . .	200815	4	4
	<b>7.546 - HEADLIGHT CABLE</b>			
7-7-9	Cable . . . . .	207781	2	2
7-7-11	Sleeve, 9/64" I.D. x 1" . . . . .	200998	*	*
7-7-13	Connector . . . . .	206899	2	2
7-7-12	Screw, Ground . . . . .	202722	2	2
	Clip (to Radiator Shroud) (Snap On Type) . . . . .	209516	2	2
	Clip (to Radiator Shroud) . . . . .	200991	2	2
	Screw, No. 14-10 x 3/4" Washer Hd. . . . .	207540	2	2
	<b>7.550 - HEADLIGHT CABLE TERMINAL BLOCK</b>			
	Block, Right (4 Post) . . . . .	204540	1	1
	Block, Left (5 Post) . . . . .	204541	1	1
	Bolt, No. 14-10 x 3/4" Rd. Hd. Cr. Rec. Tap. . . . .	710	2	2
	Speednut, "J" Type . . . . .	204795	2	2
	Nut, Terminal, No. 10-32 Hx. . . . .	202	*	*
	Lockwasher, No. 10 Med. . . . .	254	*	*
	<b>7.553 - HEADLIGHT SWITCH</b>			
	Switch . . . . .	207782	1	1
	Nut . . . . .	207783	1	1
	Nut, Terminal, No. 10-32 Hx. . . . .	202	2	2
	Lockwasher, No. 10 Ext. Tooth . . . . .	294	2	2
	Screw, Terminal, No. 8-32 x 1/4" Rd. Hd. Cr. Rec. . . . .	357	2	2
	Lockwasher, No. 8 Int. Tooth . . . . .	273	2	2
	Circuit Breaker . . . . .	202938	1	1
	Bezel . . . . .	207784	1	1
	Spacer . . . . .	207785	1	1
19-1-2	Knob . . . . .	207786	1	1

\* As Required

## ELECTRICAL

FIGURE NUMBER	GROUP, PART NAME and DESCRIPTION	PART NUMBER	USED PER CAR MODEL	
			511	512
	<b>7.554 - HEADLIGHT DIMMER SWITCH</b>			
	Switch . . . . .	204545	1	1
	Bolt, 1/4"-20 x 3/8" Rd. Hd. Cr. Rec. . . . .	474	2	2
	Lockwasher, 1/4" Ext. Tooth . . . . .	370	2	2
	Screw, Terminal, No. 8-32 x 1/4" Rd. Hd. Cr. Rec. . . . .	357	3	3
	Lockwasher, No. 8 Int. Tooth . . . . .	273	3	3
	Grommet (Black) . . . . .	202086		1
	<b>7.556 - HEADLIGHT BEAM INDICATOR LIGHT SOCKET</b>			
	Socket . . . . .	207787	1	1
	Spring . . . . .	200995	1	1
	Bushing . . . . .	200994	1	1
	Terminal, Button Type, 14-18 Gauge Wire . . . . .	200992	1	1
	Bulb, 6-8V, 1 C.P., S.C. . . . .	201462	1	1
	Lens and Retainer . . . . .	207788	1	1
	<b>7.560 - PARKING LIGHT</b>			
	Light, Parking and Directional . . . . .	207367	2	2
	Lockwasher, No. 10 Ext. Tooth . . . . .	294	4	4
	Nut, No. 10-32 Hx. . . . .	202	4	4
7-8-6	Pad, Mounting . . . . .	207368	2	2
	<b>7.563 - PARKING LIGHT LENS</b>			
7-8-3	Lens . . . . .	207369	2	2
7-8-4	Gasket . . . . .	207370	2	2
7-8-2	Bezel (Door) . . . . .	207371	2	2
7-8-1	Screw . . . . .	207372	4	4
	<b>7.564 - PARKING LIGHT BULB</b>			
7-8-5	Bulb (Parking and Directional) 6-8V, 21/3 C.P., D.C. . . . .	204579	2	2
	<b>7.568 - PARKING LIGHT CABLE</b>			
7-8-7	Cable (incl. Body and Studs) (Parking and Directional) . . . . .	207374	2	2
	Clip (to Radiator Shroud) . . . . .	200991	2	2
	Screw, No. 14-10 x 3/4" Washer Hd. . . . .	207540	2	2
	Grommet . . . . .	200849	2	2
	<b>7.570 - TAIL LIGHT</b>			
30-2-8	Light, Right (less Bulb and Cable) . . . . .	207375	1	1
30-2-18	Light, Left (less Bulb and Cable) . . . . .	207376	1	1
	Lockwasher, No. 10 Ext. Tooth . . . . .	294	8	8
	Nut, No. 10-32 Hx. . . . .	202	8	8
7-9-1	Pad (to Quarter Panel) . . . . .	207377	2	2
	<b>7.571 - TAIL LIGHT BODY</b>			
7-9-3	Body, Right (incl. Mounting Studs) . . . . .	207378	1	1
	Body, Left (incl. Mounting Studs) . . . . .	207379	1	1
	Stud . . . . .	207380	8	8

# ELECTRICAL

FIGURE NUMBER	GROUP, PART NAME and DESCRIPTION	PART NUMBER	USED PER CAR MODEL	
			511	512
	<b>7.572 - TAIL LIGHT LENS</b>			
	Lens, Right (incl. Reflex Lens) . . . . .	207381	1	1
7-9-5	Lens, Left (incl. Reflex Lens) . . . . .	207382	1	1
7-9-2	Screw, No. 8-32 x 3/4" Fil. Hd. Sl. . . . .	851	6	6
7-9-4	Gasket . . . . .	207383	2	2
	Lens, Reflex (Red Plastic) . . . . .	204520	2	2
	<b>7.574 - TAIL LIGHT BULB</b>			
	Bulb, 6-8V, 21/3 C.P., D.C. . . . .	204579	2	2
	<b>7.620 - DIRECTIONAL SIGNAL LIGHT SWITCH</b>			
7-6-4	Switch (less Lever) (less Hydra-Matic) . . . . .	207789	1	1
	Switch (less Lever) (with Hydra-Matic) . . . . .	209294	1	1
	Screw with L/W, No. 6-32 x 3/8" Rd. Hd. Cr. Rec. . . . .	205269		4
	Screw, No. 8-32 x 3/8" Rd. Hd. Cr. Rec. . . . .	599	2	2
	Lockwasher, No. 8 Ext. Tooth. . . . .	447	2	2
	Nut, No. 8-32 Hx. . . . .	272	2	2
	Nut, No. 8-32 Hx. (Elastic Stop) . . . . .	213069	2	2
	<b>7.623 - DIRECTIONAL SIGNAL LIGHT SWITCH WIRING COVER</b>			
	Cover (less Hydra-Matic) . . . . .	207790	1	
	Cover (with Hydra-Matic) . . . . .	209295	1	1
	Retainer Spring . . . . .	207791	1	1
	Clip (on Inst. Board Brace) . . . . .	212697	1	1
	<b>7.626 - DIRECTIONAL SIGNAL LIGHT SWITCH LEVER</b>			
7-6-2	Lever (Starlight Pearl) . . . . .	207792	1	1
	Lockwasher, 1/4". . . . .	190	1	1
	Nut, 1/4"-20 Hx. . . . .	203	1	1
	<b>7.630 - DIRECTIONAL SIGNAL LIGHT SWITCH CUT-OFF</b>			
	Pin (on Steering Wheel) . . . . .	204560	2	2
	<b>7.635 - DIRECTIONAL SIGNAL LIGHT FLASHER</b>			
	Flasher . . . . .	203831	1	1
	Bracket . . . . .	203832	1	1
	Screw, No. 10-12 x 5/8" Rd. Hd. Cr. Rec. Tap. . . . .	622	1	1
	Connector . . . . .	206899	1	1
	<b>7.637 - DIRECTIONAL INDICATOR LIGHT SOCKET</b>			
	Socket . . . . .	207793	2	2
	Spring . . . . .	200995	2	2
	Bushing . . . . .	200994	2	2
	Terminal, Cap Type, 14-16 Gauge Wire . . . . .	200992	2	2
	Bulb, 6-8V, 1 C.P., S.C. . . . .	201462	2	2
	Lens and Retainer . . . . .	207794	2	2



## ELECTRICAL

FIGURE NUMBER	GROUP, PART NAME and DESCRIPTION	PART NUMBER	USED PER CAR MODEL	
			511	512
	<b>7.642 - INSTRUMENT PANEL WIRING JUNCTION BLOCK</b>			
	Block (4 Post) . . . . .	204540	1	1
	Screw, No. 14-10 x 1/2" Rd. Hd. Cr. Rec. Tap . . . . .	619	2	2
	Nut, Terminal, No. 10-32 Hx. . . . .	202	4	4
	Lockwasher, No. 10 . . . . .	254	4	4
	<b>7.643 - INSTRUMENT LIGHTS SOCKET</b>			
	Socket . . . . .	200993	3	3
	Spring . . . . .	200995	3	3
	Bushing . . . . .	200994	3	3
	Terminal, Cap Type, 14-16 Gauge Wire . . . . .	200992	3	3
	Bulb, 6-8V, 2 C.P., S.C. . . . .	201502	3	3
	<b>7.650 - STOP LIGHT SWITCH</b>			
	Switch . . . . .	201466	1	1
	<b>7.652 - CIGAR LIGHTER</b>			
30-14-25	Lighter (Inst. Panel) . . . . .	212178	1	1
	Lighter (Seat Back) . . . . .	207339		1
	Nut, Terminal, No. 8-32 Hx. . . . .	272	1	1
	Lockwasher, No. 8 Int. Tooth . . . . .	273	1	1
19-1-5	Knob and Element (Inst. Panel) . . . . .	207918	1	1
	Knob and Element (Seat Back) . . . . .	207141		1
	Base and Clamp . . . . .	201504	1	1
	Element . . . . .	202042	1	1
	<b>7.657 - CIGAR LIGHTER CABLE (SEAT BACK)</b>			
	Cable, Feed . . . . .	205275		1
	Terminal, Plug Type, 12 Gauge Wire . . . . .	200996		1
	Terminal, Eyelet Type, 10-12 Gauge Wire . . . . .	799		1
	Sleeve, 3/16" I.D. x 1" . . . . .	200997		1
	Grommet (in Ash Receiver Back Plate) . . . . .	200499		1
	Cable, Fuse (10" Long) . . . . .	208523		1
	Terminal, Eyelet, No. 10 Hole, 10-12 Gauge Wire . . . . .	799		1
	Sleeve, 3/16" I.D. x 1" . . . . .	200997		1
	Cable, Fuse (55" Long) . . . . .	208524		1
	Terminal, Socket Type, 14-16 Gauge Wire . . . . .	201458		1
	Fuse (30 Amp.) . . . . .	202899		1
	<b>7.660 - FUEL GAUGE TANK UNIT CABLE</b>			
	Cable . . . . .	206259	1	1
	Terminal, Plug Type, 14-16 Gauge Wire . . . . .	201214	1	1
	Terminal, Eyelet Type, No. 10 Hole, 14-16 Gauge Wire . . . . .	798	1	1
	Sleeve, 9/64" I.D. x 1" . . . . .	200998	1	1
	Clip (on Frame Rear Crossmember) . . . . .	205693	1	1
	Grommet . . . . .	204305	1	1
	<b>7.700 - CHASSIS WIRING HARNESS</b>			
	Harness (with Hydra-Matic) . . . . .	209292	1	1

## ELECTRICAL

7

FIGURE NUMBER	GROUP, PART NAME and DESCRIPTION	PART NUMBER	USED PER CAR MODEL	
			511	512
	<b>7.700 - CHASSIS WIRING HARNESS (Cont'd)</b>			
7-1-14	Harness (less Hydra-Matic) . . . . .	207919	1	1
	Terminal, Eyelet Type, No. 10 Hole, 10-12 Gauge Wire . . . . .	819	4	4
	Terminal, Eyelet Type, No. 8 Hole, 10-14 Gauge Wire . . . . .	845	1	1
	Terminal, Eyelet Type, 5/16" Hole, 8 Gauge Wire . . . . .	846	1	1
	Terminal, Eyelet Type, No. 10 Hole, 10-12 Gauge Wire . . . . .	799	6	6
	Terminal, Eyelet Type, No. 10 Hole, 14-16 Gauge Wire . . . . .	798	13	13
	Terminal, Eyelet Type, No. 8 Hole, 14-16 Gauge Wire . . . . .	860	5	5
	Terminal, Socket Type, 14-16 Gauge Wire . . . . .	201458	3	3
	Terminal, Plug Type, 12 Gauge Wire . . . . .	200996	1	1
	Sleeve, 15/64" I.D. x 1" . . . . .	200999	6	6
	Sleeve, 9/64" I.D. x 1" . . . . .	200998	18	18
	Sleeve, 3/16" I.D. x 1" . . . . .	200997	9	9
	Clip (on Radiator Shroud) . . . . .	209516	1	1
	Clip (to Left Front Fender Mounting Bolts) . . . . .	207920	2	2
	Clip (Oil Gauge Engine Unit Wire to Dash Panel) . . . . .	204515	1	1
	Clip (on Cowl below Vent. Duct) . . . . .	201614	1	1
	Screw, No. 10-12 x 3/8" Rd. Hd. Cr. Rec. Tap . . . . .	609	1	1
	Grommet (on Cowl) . . . . .	207921	1	1
	Grommet (on Radiator Splash Panel) . . . . .	207922	1	1
	<b>7.800 - OVERDRIVE SOLENOID</b>			
9-2-30	Solenoid . . . . .	212518	1	1
	Bolt, 5/16"-18 x 5/8" Hx. Hd. . . . .	208	2	2
	Lockwasher, 5/16" Ext. Tooth . . . . .	348	2	2
9-2-29	Oil Seal . . . . .	200914	1	1
	<b>7.802 - OVERDRIVE RAIL SWITCH</b>			
9-2-52	Switch . . . . .	200915	1	1
	Screw, No. 10-24 x 1/2" Rd. Hd. Cr. Rec. . . . .	473	2	2
	Lockwasher, No. 10 Med. . . . .	254	2	2
9-2-53	Gasket . . . . .	200918	1	1
	<b>7.804 - OVERDRIVE SOLENOID RELAY</b>			
	Relay . . . . .	207923	1	1
	Screw, No. 14-10 x 1/2" Rd. Hd. Cr. Rec. Tap . . . . .	619	2	2
	Fuse (20 Amp.) . . . . .	201818	1	1
	<b>7.806 - OVERDRIVE KICKDOWN SWITCH</b>			
3-2-11	Switch . . . . .	207924	1	1
	Lockwasher, 7/16" Ext. Tooth . . . . .	637	1	1
	Nut, 7/16"-20 Hx. . . . .	203387	1	1
	Screw, Terminal, No. 8-32 x 1/4" Rd. Hd. Cr. Rec. . . . .	357	4	4
	Lockwasher, No. 8 . . . . .	201356	4	4
	Button Plug, Overdrive Kickdown Switch Mounting Hole (for use only when Overdrive is not specified) . . . . .	212739	1	1
	<b>7.810 - OVERDRIVE RAIL SWITCH TO GOVERNOR CABLE</b>			
7-1-12	Cable . . . . .	203324	1	1
	Sleeve, 9/64" I.D. x 1" . . . . .	200998	2	2
	Terminal, Eyelet Type, No. 10 Hole, 14-16 Gauge Wire . . . . .	798	2	2

ELECTRICAL

FIGURE NUMBER	GROUP, PART NAME and DESCRIPTION	PART NUMBER	USED PER CAR MODEL	
			511	512
7-1-11	7.812 - OVERDRIVE WIRING HARNESS			
	Harness . . . . .	207925	1	1
	Connector (to Overdrive Relay) (incl. 6" of Cables) . . . . .	209997	1	1
	Terminal, Eyelet Type, No. 10 Hole, 10-12 Gauge Wire. . . . .	799	1	1
	Terminal, Eyelet Type, No. 10 Hole, 14-16 Gauge Wire. . . . .	798	3	3
	Terminal, Eyelet Type, No. 8 Hole, 14-16 Gauge Wire . . . . .	860	5	5
	Sleeve, 9/64" I.D. x 1" . . . . .	200998	8	8
	Sleeve, 3/16" LD. x 1" . . . . .	200997	2	2
	Clip (on Cowl at Accelerator Pedal). . . . .	201637	1	1
Clip (at Steering Column Opening). . . . .	205693	1	1	
Clip (at Accelerator Bracket and Flywheel Housing). . . . .	205336	2	2	