

FIGURE 9-1 — TYPICAL TRANSMISSION - CONVENTIONAL - EXPLODED VIEW

FIGURE 9-1 — TYPICAL TRANSMISSION - CONVENTIONAL - EXPLODED VIEW

KEY	PART NAME	GROUP	KEY	PART NAME	GROUP
1	Cover, Case	9.007	34	Retainer, Main Shaft Bearing	9.145
2	Gasket, Cover	9.007	35	Bushing, Main Shaft Bearing Retainer	9.145
3	Gear, Sliding, Low and Reverse	9.135	36	Oil Seal, Main Shaft	9.145
4	Gear, Sliding, Second Speed Idler	9.135	37	Shoe, Shifting, Low and Reverse	9.185
5	Blocking Ring, Second and High	9.130	38	Lever and Shaft, Shifting, Inner, Low and Reverse	9.180
6	Snap Ring, Shifting Plate	9.130	39	Spring, Shifting Lever Poppet Ball	9.190
7	Hub, Second and High Synchronizer	9.125	40	Pin, Shifting Lever Poppet Ball	9.190
8	Plate, Second and High Synchronizer Shifting	9.130	41	Flatwasher	9.195
9	Sleeve, Second and High Synchronizer	9.130	42	Lockwasher	9.195
10	Synchronizer Unit, Second and High	9.125	43	Nut	9.195
11	Bearing, Main Shaft Roller	9.120	44	Lever Assembly, Shifting, Outer, Low and Reverse	9.195
12	Shaft, Transmission Main	9.120	45	Ball, Shifting Lever Poppet	9.190
13	Key, Speedometer Drive Gear to Shaft	9.286	46	Sleeve, Shifting Lever Poppet Ball	9.190
14	Snap Ring, Second and High Synchronizer	9.125	47	Insulator, Shifting Lever, Outer	9.195
15	Thrustwasher, Countershaft Gear Cluster, Front	9.155	48	Lever Assembly, Shifting, Outer, Second and High	9.195
16	Gear Cluster, Countershaft	9.155	49	Oil Seal, Shifting Lever, Inner	9.180
17	Thrustwasher, Countershaft Gear Cluster, Rear	9.155	50	Lever and Shaft, Second and High	9.180
18	Thrustwasher, Countershaft Gear Cluster, Rear	9.155	51	Fork, Shifting, Second and High	9.185
19	Washer, Countershaft Gear Bearing	9.160	52	Pin	9.180
20	Spacer, Countershaft Gear Bearing	9.160	53	Case Assembly	9.005
21	Bearing (Roller) Countershaft Gear	9.160	54	Plug, Expansion	9.005
22	Countershaft	9.165	55	Retainer, Drive Pinion Bearing	9.115
23	Bolt, Retainer to Case	9.145	56	Snap Ring, Drive Pinion Bearing	9.110
24	Lockwasher, Retainer to Case	9.145	57	Snap Ring, Drive Pinion Bearing	9.110
25	Lockplate, Reverse Idler Gear Shaft	9.175	58	Bearing, Drive Pinion	9.105
26	Shaft, Reverse Idler Gear	9.175	59	Slinger, Drive Pinion Bearing	9.105
27	Bushing, Reverse Idler Gear	9.170	60	Not serviced separately (see Item 63)	
28	Gear Assembly, Reverse Idler	9.170	61	Gasket, Drive Pinion Bearing Retainer	9.117
29	Snap Ring, Main Shaft Bearing	9.140	62	Plug, Filler and Drain	9.005
30	Bearing, Main Shaft	9.140	63	Pinion Assembly, Drive	9.100
31	Gear, Speedometer Drive	9.286			
32	Snap Ring, Speedometer Gear to Shaft	9.286			
33	Gasket, Retainer to Case	9.145			

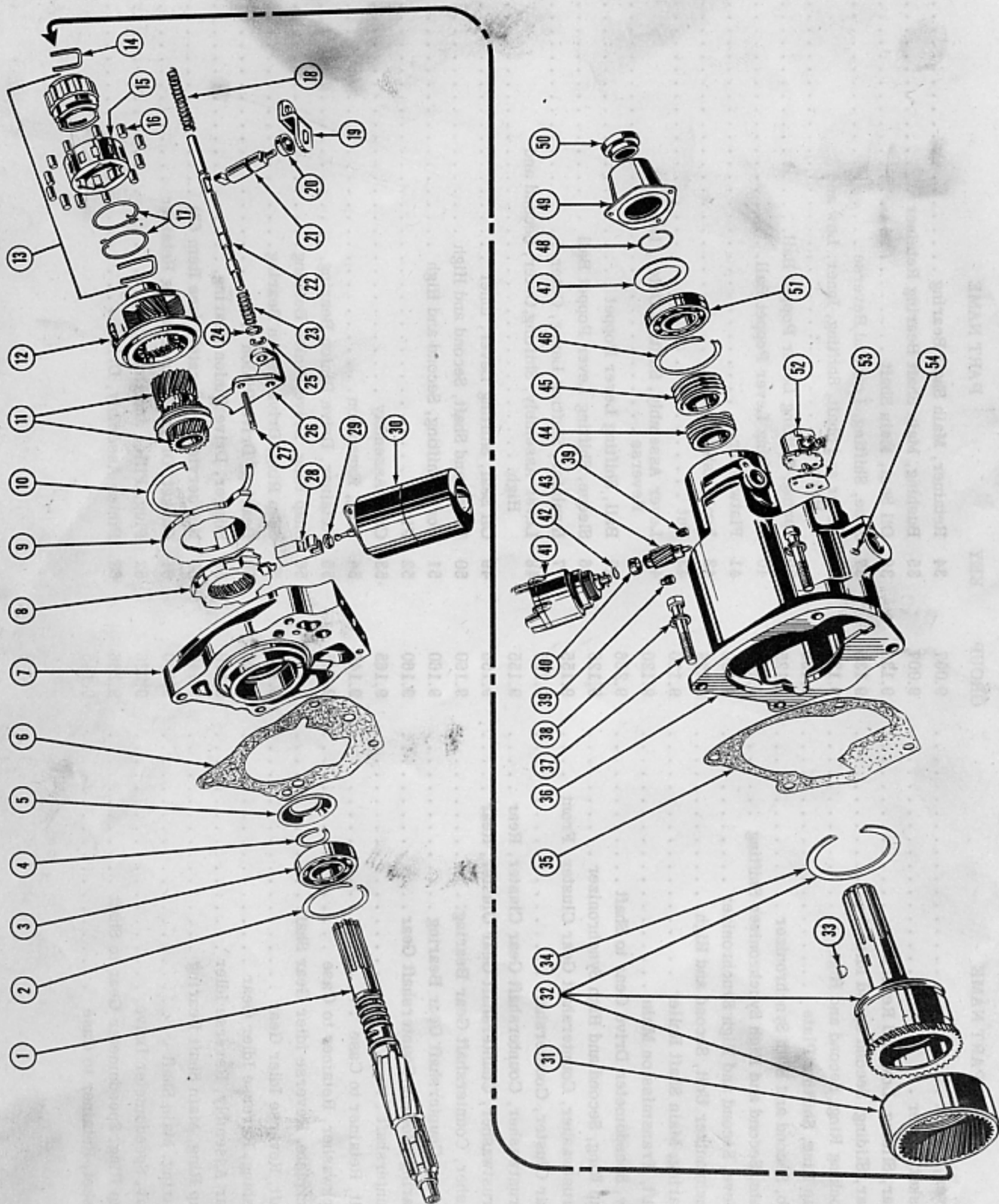


FIGURE 9-2 — TYPICAL OVERDRIVE UNIT - EXPLODED VIEW

FIGURE 9-2 — TYPICAL OVERDRIVE UNIT - EXPLODED VIEW

KEY	PART NAME	GROUP	KEY	PART NAME	GROUP
1	Shaft, Overdrive Transmission	9.120	28	Pawl, Stationary Gear	9.210
2	Snap Ring, Main Shaft Bearing	9.140	29	Oil Seal, Solenoid	7.800
3	Bearing, Main Shaft	9.140	30	Solenoid	7.800
4	Snap Ring, Main Shaft Bearing	9.140	31	Ring Gear	9.245
5	Baffle, Main Shaft Bearing	9.140	32	Main Shaft Assembly	9.235
6	Gasket, Overdrive Adapter to Transmission Case	9.145	33	Key, Governor and Speedometer Gear to Shaft	9.265
7	Adapter, Overdrive Housing	9.145	34	Snap Ring, Ring Gear	9.245
8	Gear and Blocking Ring, Stationary	9.205	35	Gasket, Housing to Adapter	9.200
9	Plate, Stationary Gear Cover	9.215	36	Housing	9.200
10	Snap Ring, Stationary Gear Cover Plate	9.215	37	Bolt	9.200
11	Gear Assembly, Stationary	9.210	38	Lockwasher	9.200
12	Cage Assembly, Stationary Gear Pinion	9.220	39	Plug, Filler and Drain	9.200
13	Cam Assembly, Free Wheeling	9.225	40	Sleeve, Governor Pinion	9.265
14	Clip, Free Wheeling Cam	9.225	41	Governor	9.265
15	Retainer, Free Wheeling Cam Bearing	9.230	42	Retainer, Governor Pinion Sleeve	9.265
16	Bearing, Free Wheeling Cam, Roller	9.230	43	Pinion, Governor	9.265
17	Spring, Free Wheeling Cam Bearing Retainer	9.230	44	Gear, Governor	9.265
18	Spring, Shift Control Shaft, Retractor	9.255	45	Gear, Speedometer Drive	9.286
19	Lever, Control Shaft	9.260	46	Snap Ring, Main Shaft Bearing to Housing	9.240
20	Oil Seal, Shift Control Shaft	9.255	47	Washer, Main Shaft Bearing	9.240
21	Shaft, Shift Control	9.255	48	Snap Ring, Main Shaft Bearing to Shaft	9.240
22	Rail, Overdrive Shift Fork	9.250	49	Housing, Main Shaft Slip Joint	9.247
23	Spring, Shift Control Shaft, Lock-Up	9.255	50	Oil Seal, Main Shaft	9.235
24	Cup, Shift Control Shaft Lock-Up Spring	9.250	51	Bearing, Main Shaft	9.240
25	"C" Washer, Shift Fork	9.250	52	Switch, Shift Fork Rail	7.802
26	Fork, Shift	9.250	53	Gasket, Shift Fork Rail Switch	7.802
27	Guide, Shift Fork	9.250	54	Pin, Shift Control Shaft	9.255

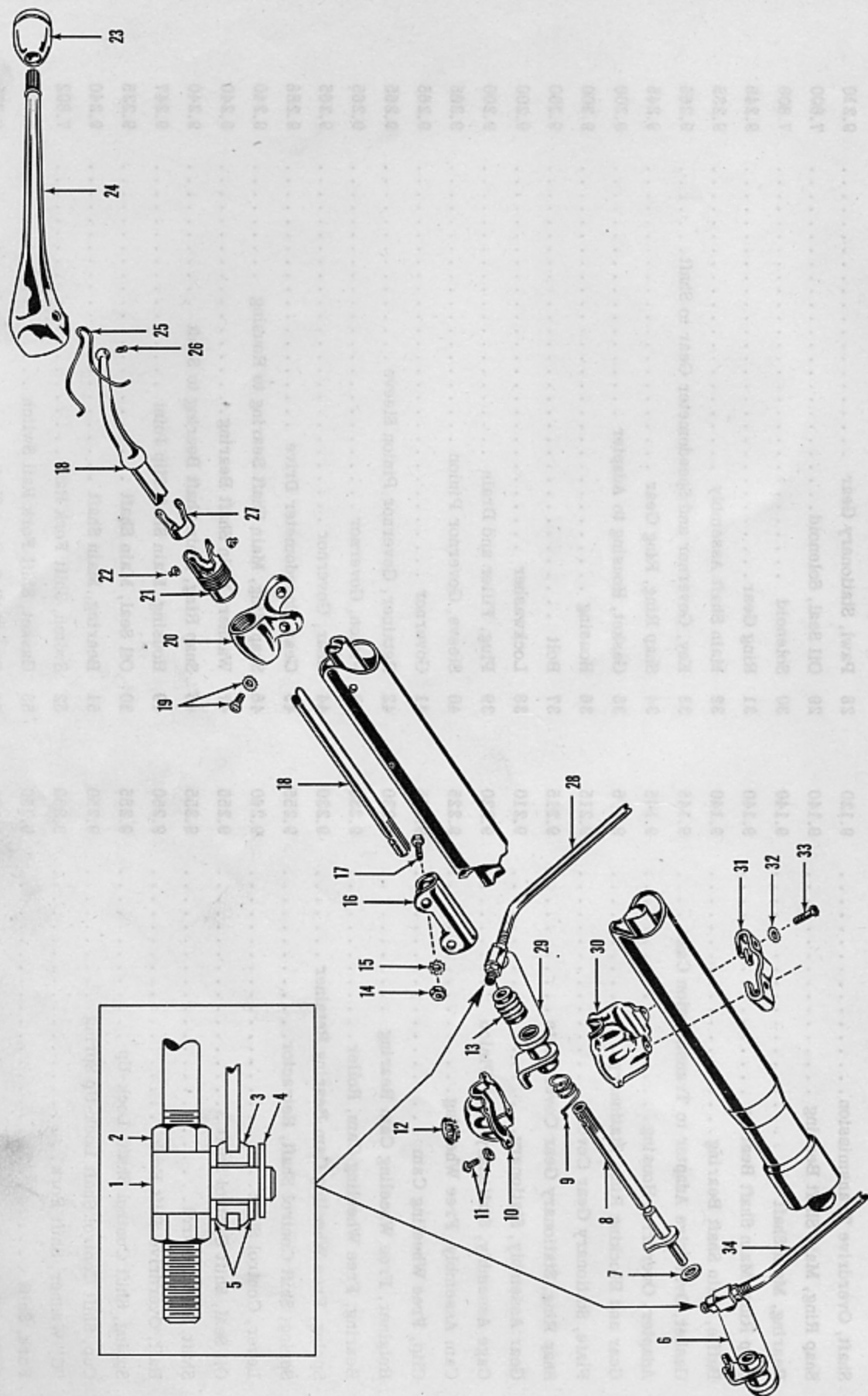


FIGURE 9-3 — CONVENTIONAL TRANSMISSION GEAR SHIFT CONTROL - EXPLODED VIEW

FIGURE 9-3 — CONVENTIONAL TRANSMISSION GEAR SHIFT CONTROL - EXPLODED VIEW

KEY	PART NAME	GROUP	KEY	PART NAME	GROUP
1	Pivot, Gear Shift Rod	9.340	18	Shaft, Upper	9.310
2	Jamnut, Gear Shift Rod Pivot	9.340	19	Bolt with L/W, Upper Shaft Bracket	9.310
3	Insulator, Lower Lever	9.320	20	Bracket, Upper Shaft	9.310
4	Clip, Lower Lever to Pivot	9.340	21	Guide, Upper Shaft	9.310
5	Flatwasher, Lower Lever to Pivot	9.340	22	Pivot Pin, Upper Lever	9.300
6	Lever Assembly, Lower (Second and High)	9.320	23	Knob, Upper Lever	9.300
7	Washer, Lower Lever to Shaft (Second and High)	9.320	24	Lever, Upper	9.300
8	Shaft Assembly, Lower	9.310	25	Spring, Upper Lever Pivot Pin	9.300
9	Spring, Lower Lever to Cam (Low and Reverse)	9.320	26	Spring, Shaft to Upper Lever	9.310
10	Cover, Lever Housing	9.320	27	Retainer, Upper Shaft	9.300
11	Bolt with L/W, Lever Housing Cover	9.320	28	Rod, Low and Reverse	9.340
12	Plug, Lever Housing Cover	9.320	29	Lever, Low and Reverse	9.320
13	Dust Seal, Upper Shaft to Lower Lever	9.320	30	Housing, Lower Lever	9.320
14	Nut, Upper to Lower Shaft Clamp	9.310	31	Clamp, Housing to Steering Gear Jacket	9.320
15	Lockwasher, Upper to Lower Shaft Clamp	9.310	32	Lockwasher, Clamp to Housing	9.320
16	Clamp, Upper to Lower Shaft	9.310	33	Bolt, Clamp to Housing	9.320
17	Bolt, Upper to Lower Shaft Clamp	9.310	34	Rod, Second and High	9.340

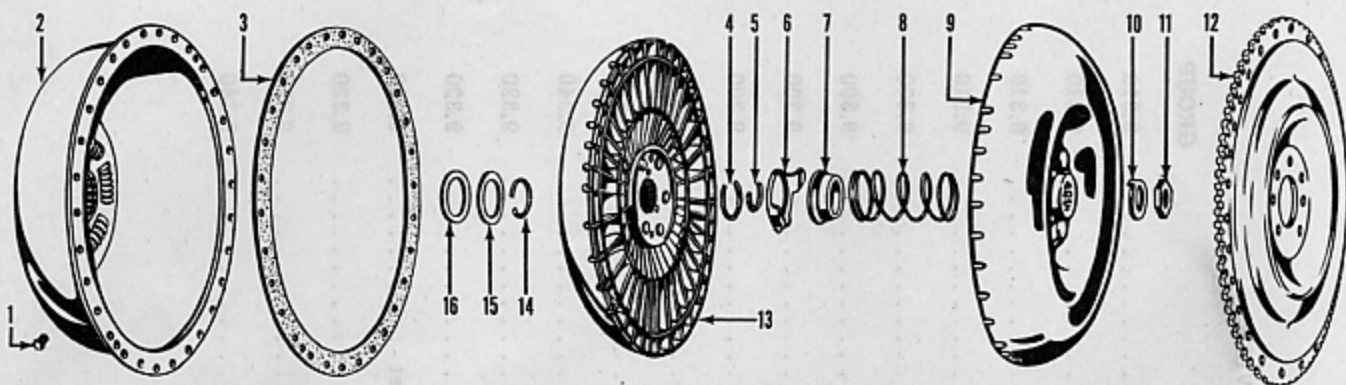


FIGURE 9-4 — FLYWHEEL, TORUS MEMBERS AND COVER - HYDRA-MATIC

KEY	PART NAME	GROUP	KEY	PART NAME	GROUP
1	Plug, Torus Cover	9.505	10	Locking Washer, Driven Torus	9.505
2	Cover, Torus	9.505	11	Nut, Driven Torus	9.505
3	Gasket, Torus Cover to Flywheel	9.505	12	Flywheel	1.360
4	Snap Ring, Driving Torus	9.505	13	Torus, Driving (Rear)	9.505
5	Ring, Driven Torus Retaining	9.505	14	Snap Ring, Front Drive Gear	9.560
6	Retainer, Torus Check Valve	9.505	15	Thrustwasher, Front Drive Gear (Steel)	9.560
7	Check Valve, Torus	9.505	16	Thrustwasher, Front Drive Gear (Bronze)	9.560
8	Spring, Torus Check Valve	9.505			
9	Torus, Driven (Front)	9.505			

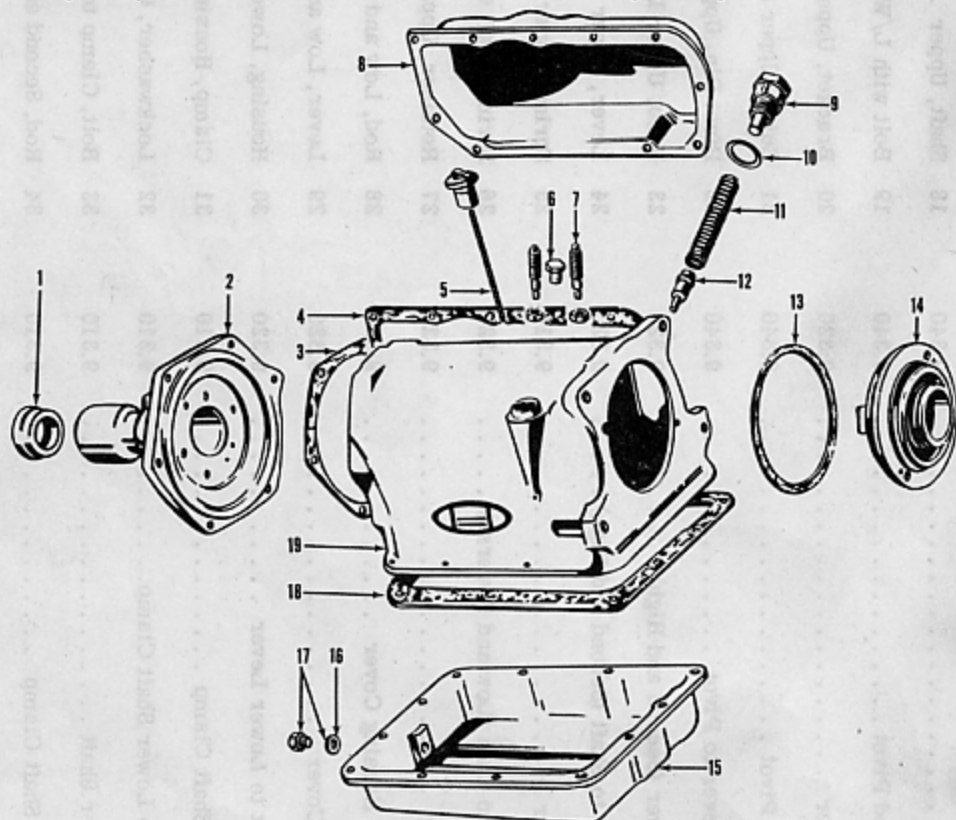


FIGURE 9-5 — CASE, COVERS AND REAR BEARING RETAINER - HYDRA-MATIC

KEY	PART NAME	GROUP	KEY	PART NAME	GROUP
1	Oil Seal, Rear Bearing	9.525	11	Spring, Oil Pressure Regulator Valve	9.555
2	Retainer Assembly, Rear Bearing	9.525	12	Plug Assembly, Oil Pressure Regulator Valve	9.555
3	Gasket, Rear Bearing Retainer	9.525	13	Gasket, Front Oil Pump Cover to Case	9.535
4	Gasket, Case Side Cover	9.510	14	Pump, Front Oil	9.530
5	Indicator Assembly, Oil Level	9.520	15	Oil Pan	9.515
6	Plug, Case	9.510	16	Gasket, Oil Pan Plug	9.515
7	Screw, Clutch Servo Band Adjusting	9.580	17	Plug and Gasket, Oil Pan	9.515
8	Cover, Case Side	9.510	18	Gasket, Oil Pan	9.515
9	Valve, Oil Pressure Regulator	9.555	19	Case	9.510
10	Gasket, Oil Pressure Regulator Plug	9.555			

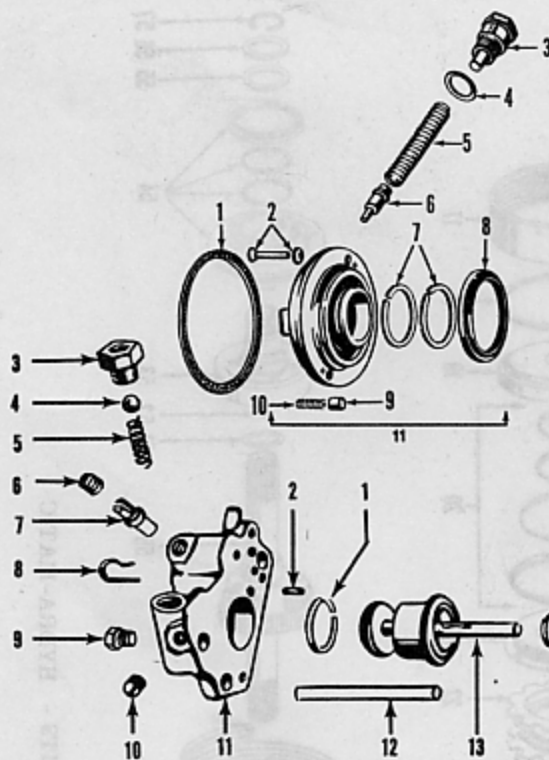


FIGURE 9-6 — FRONT OIL PUMP - HYDRA-MATIC

KEY	PART NAME	GROUP
1	Gasket, Front Oil Pump Cover to Case	9.535
2	Serviced in Front Oil Pump Screw and Washer Package	9.535
3	Valve, Oil Pressure Regulator	9.555
4	Gasket, Oil Pressure Regulator Plug	9.555
5	Spring, Oil Pressure Regulator Plug	9.555
6	Plug Assembly, Oil Pressure Regulator Valve	9.555
7	Ring, Front Oil Pump Cover Oil Seal	9.540
8	Oil Seal, Front Oil Pump Cover	9.540
9	Valve, Front Oil Pump Relief	9.550
10	Spring, Front Oil Pump Relief Valve	9.550
11	Pump, Front Oil	9.530

FIGURE 9-7 — FRONT SERVO - HYDRA-MATIC

KEY	PART NAME	GROUP	KEY	PART NAME	GROUP
1	Ring, Front Servo Band Apply Piston	9.595	9	Plug, Front Servo Body	9.585
2	Dowel, Front Servo Body	9.585	10	Plug, Front Servo Body	9.585
3	Seat, Rear Pump Discharge Check Valve	9.605	11	Body, Front Servo	9.585
4	Ball, Rear Pump Discharge Check Valve	9.605	12	Pipe, Front Oil Pump to Front Servo	9.545
5	Spring, Rear Pump Discharge Check Valve	9.605	13	Piston Assembly, Front Servo Band Apply	9.595
6	Plug, Front Servo Downshift 4th to 3rd Valve	9.600	14	Spring, Front Servo Retracting	9.595
7	Valve, Front Servo Downshift 4th to 3rd	9.600	15	Retainer, Front Servo Retracting Spring	9.595
8	Retainer, Front Servo Downshift 4th to 3rd Valve	9.600	16	Spring, Front Servo Booster	9.595
			17	Piston, Front Servo Band Release	9.595
			18	Ring, Front Servo Band Release Piston	9.595
			19	Cylinder, Front Servo	9.590

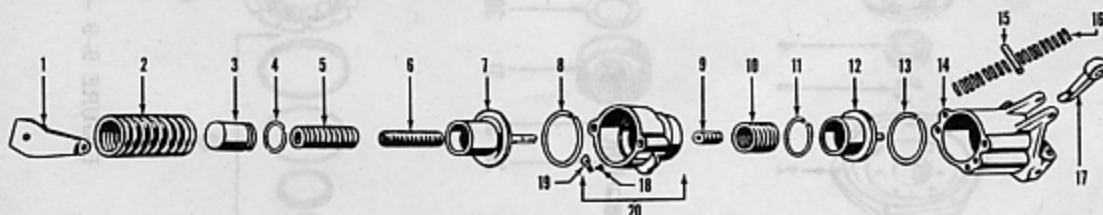


FIGURE 9-8 — REAR SERVO - HYDRA-MATIC

KEY	PART NAME	GROUP	KEY	PART NAME	GROUP
1	Retainer, Rear Servo Compensator Piston Spring	9.650	11	Ring, Rear Servo Booster Piston	9.635
2	Spring, Rear Servo Accumulator Piston Main	9.645	12	Piston, Rear Servo Booster	9.635
3	Piston, Rear Servo Compensator	9.650	13	Ring, Rear Servo Booster Piston	9.635
4	Ring, Rear Servo Compensator Piston	9.650	14	Body Assembly, Rear Servo	9.630
5	Spring, Rear Servo Compensator Piston Outer	9.650	15	Pin, Rear Clutch Servo Band Actuating Lever	9.625
6	Spring, Rear Servo Compensator Piston Inner	9.650	16	Bearing, Rear Clutch Servo Band Actuating Lever	9.625
7	Piston, Rear Servo Accumulator	9.645	17	Lever, Rear Clutch Servo Band Actuating	9.625
8	Ring, Rear Servo Accumulator Piston	9.645	18	Plunger, Rear Servo Accumulator Check Valve	9.640
9	Spring, Rear Servo Accumulator Piston Apply	9.645	19	Check Valve and Rivet, Rear Servo Accumulator	9.640
10	Spring, Rear Servo Booster Piston	9.635	20	Body Assembly, Rear Servo Accumulator	9.640

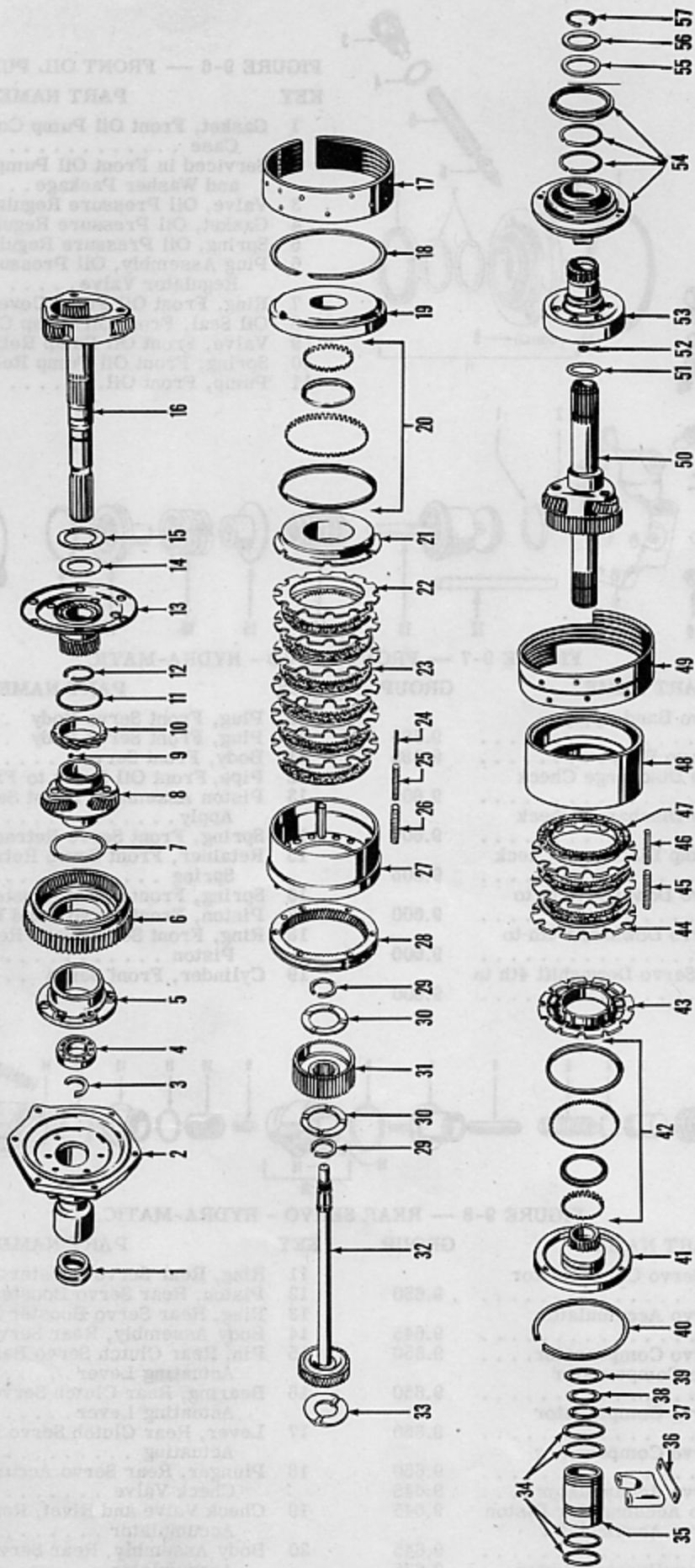


FIGURE 9-9 — FRONT, REAR AND REVERSE UNITS - HYDRA-MATIC

FIGURE 9-9 — FRONT, REAR AND REVERSE UNITS - HYDRA-MATIC

KEY	PART NAME	GROUP	KEY	PART NAME	GROUP
1	Oil Seal, Rear Bearing	9.525	30	Thrustwasher, Rear Clutch Hub	9.620
2	Retainer Assembly, Rear Bearing	9.525	31	Hub, Rear Clutch	9.620
3	Snap Ring, Reverse Unit Bearing	9.685	32	Shaft and Gear, Main	9.660
4	Bearing, Reverse Unit Shaft	9.685	33	Thrustwasher, Main Shaft	9.660
5	Support, Reverse Unit Internal Gear	9.685	34	Ring, Oil Delivery Sleeve Oil Seal	9.575
6	Gear, Reverse Unit Internal	9.685	35	Sleeve, Front Drum Oil Delivery	9.575
7	Snap Ring, Reverse Unit Internal Gear	9.685	36	Lockplate, Oil Delivery Sleeve Cap Bolt	9.575
8	Planet Carrier, Reverse Unit	9.680	37	Snap Ring, Front Clutch Drum, Rear	9.565
9	Ball, Oil Pump and Governor Drive Gear	9.670	38	Thrustwasher, Front Clutch Drum, Rear (Steel)	9.565
10	Gear, Oil Pump and Governor Drive	9.670	39	Thrustwasher, Front Clutch Drum, Rear (Bronze)	9.565
11	Snap Ring, Oil Pump and Governor Drive	9.670	40	Snap Ring, Front Clutch Control Annular Piston	9.570
12	Snap Ring, Reverse Unit Planet Carrier	9.680	41	Drum Assembly, Front Clutch	9.565
13	Gear Assembly, Reverse Unit Center (Steel)	9.675	42	Serviced in Front Clutch Control Piston Expander and Seal Package	9.570
14	Thrustwasher, Reverse Unit Center Gear	9.675	43	Piston, Front Clutch Control Annular	9.570
15	Thrustwasher, Reverse Unit Center Gear (Bronze)	9.665	44	Plate, Front Clutch Drive (Steel)	9.570
16	Shaft and Planet Gears Assembly, Reverse Output	9.625	45	Spring, Front Clutch Release, Outer	9.570
17	Band and Lining, Rear Clutch Servo	9.615	46	Spring, Front Clutch Release, Inner	9.570
18	Snap Ring, Rear Clutch Control Annular Piston	9.615	47	Plate Assembly, Front Clutch Drive	9.570
19	Drum Assembly, Rear Clutch	9.610	48	Drum Assembly, Front Brake	9.565
20	Serviced in Rear Clutch Control Piston Expander and Seal Package	9.615	49	Band and Lining, Front Clutch Servo	9.580
21	Piston, Rear Clutch Control Annular	9.615	50	Carrier Assembly, Front Planet	9.560
22	Plate, Rear Clutch (Steel)	9.615	51	Thrustwasher, Front Drive Gear, Rear (Bronze)	9.560
23	Plate Assembly, Rear Clutch	9.615	52	Washer, Front Oil Pump Cover Locating	9.535
24	Pin, Rear Clutch Release Spring Guide	9.615	53	Gear Assembly, Front Unit Drive	9.560
25	Spring, Rear Clutch Release, Inner	9.615	54	Pump, Front Oil	9.530
26	Spring, Rear Clutch Release, Outer	9.615	55	Thrustwasher, Front Drive Gear (Bronze)	9.560
27	Drum Assembly, Rear Brake	9.610	56	Thrustwasher, Front Drive Gear (Steel)	9.560
28	Gear, Rear Drum Internal	9.610	57	Snap Ring, Front Drive Gear	9.560
29	Snap Ring, Rear Clutch Hub	9.620			

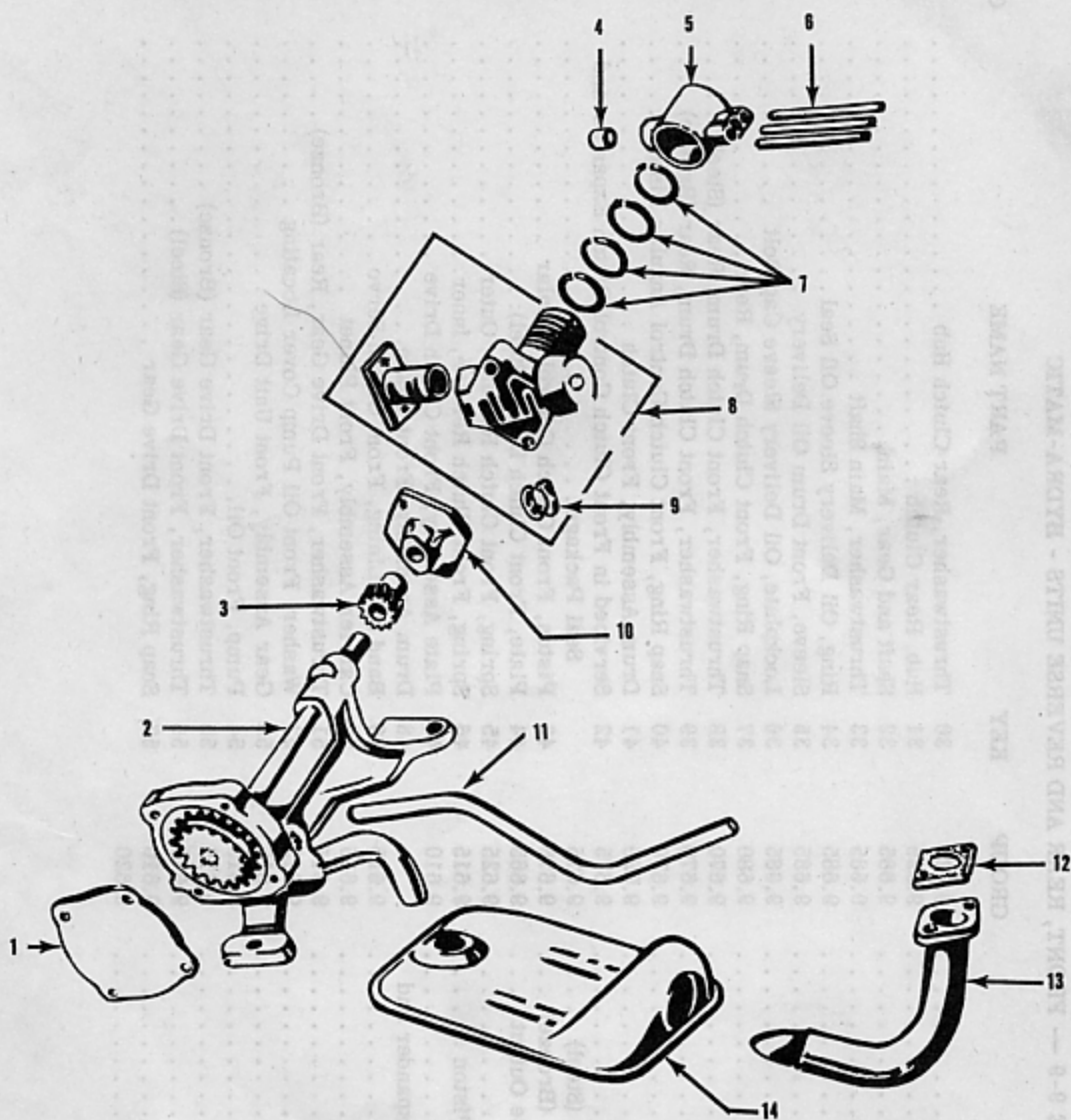


FIGURE 9-10 — REAR OIL PUMP AND GOVERNOR - HYDRA-MATIC

KEY	PART NAME	GROUP	KEY	PART NAME	GROUP
1	Cover, Rear Oil Pump	9.700	9	Stop, Governor Plunger	9.705
2	Oil Pump Assembly, Rear	9.700	10	Serviced in Governor Flange and Pin Package	9.705
3	Gear and Pin Package, Rear Oil Pump	9.700	11	Pipe, Rear Oil Pump to Front Servo Discharge	9.655
4	Plug, Governor Oil Delivery Sleeve . .	9.705	12	Gasket, Front Oil Pump Inlet Pipe Flange	9.545
5	Sleeve, Governor Oil Delivery	9.705	13	Pipe Assembly, Front Oil Pump Inlet	9.545
6	Pipe, Control Valve to Governor Oil Delivery.	9.710	14	Screen, Oil Pump Intake	9.545
7	Ring, Governor Oil Seal	9.705			
8	Governor Assembly	9.705			

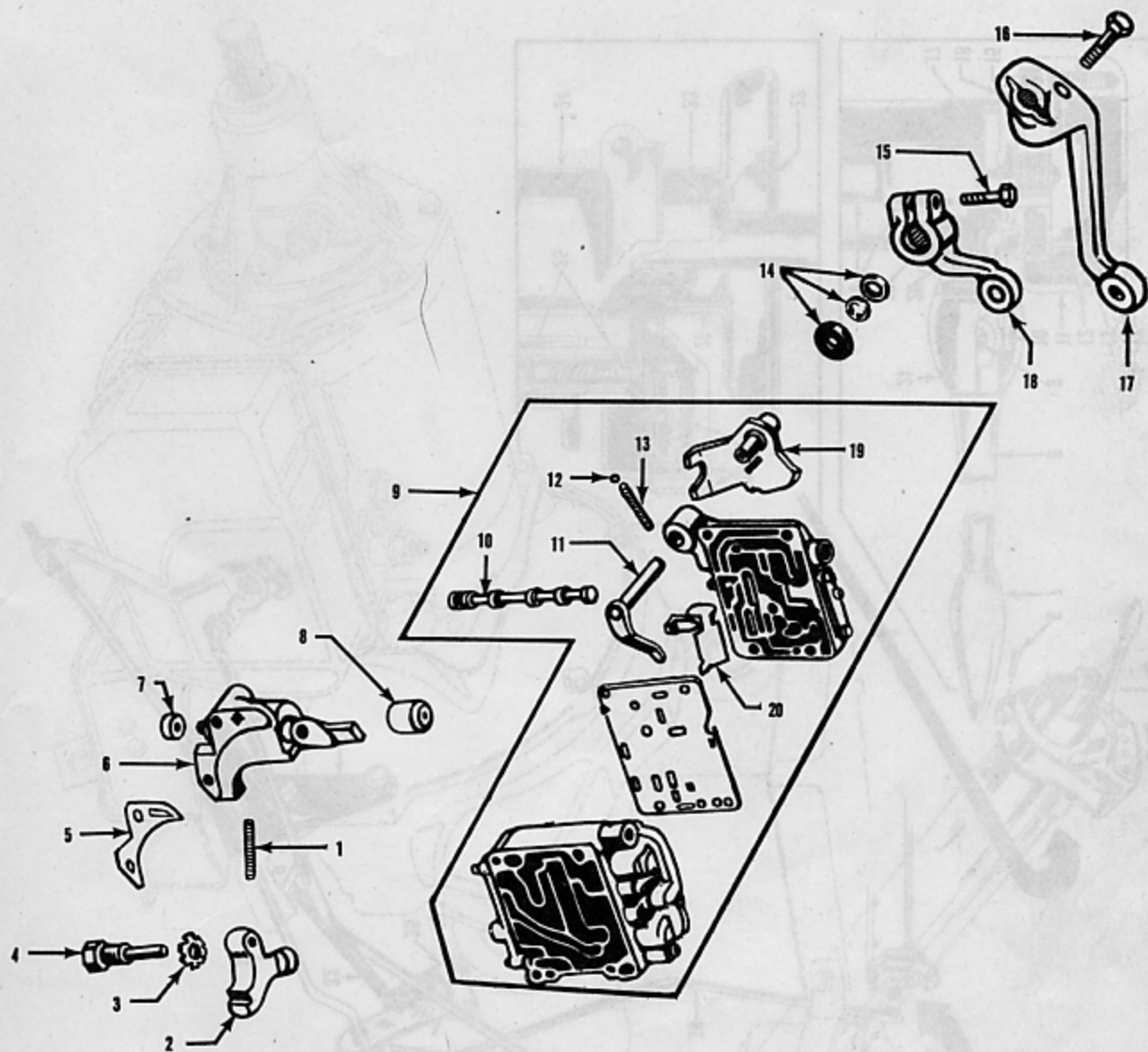


FIGURE 9-11 — OIL CONTROL VALVE AND RELATED PARTS - HYDRA-MATIC

KEY	PART NAME	GROUP	KEY	PART NAME	GROUP
1	Spring, Reverse Anchor Retracting . .	9.695	12	Ball, Manual Control Valve Detent . .	9.715
2	Anchor, Reverse	9.695	13	Spring, Manual Control Valve Detent Ball	9.715
3	Lock, Reverse Anchor Bolt	9.695	14	Serviced in Inner Control Lever Seal and Washer Package	9.720
4	Bolt, Reverse Anchor	9.695	15	Bolt, Outer Shift Lever Clamp	9.725
5	Shim, Reverse Shifter Bracket to Case	9.695	16	Bolt, Throttle Control Outer Lever Clamp	9.720
6	Bracket and Crank, Reverse Shifter . .	9.695	17	Lever, Throttle Control Outer	9.720
7	Roller, Reverse Shifter Crank	9.695	18	Lever, Outer Shift	9.725
8	Piston, Reverse Shifter Bracket Blocker	9.695	19	Lever Assembly, Manual Control Detent	9.715
9	Control Valve Assembly, Oil	9.710	20	Retainer, Manual Control Valve Detent Ball	9.715
10	Valve, Manual Control.	9.715			
11	Lever and Shaft, Throttle Control, Inner	9.720			

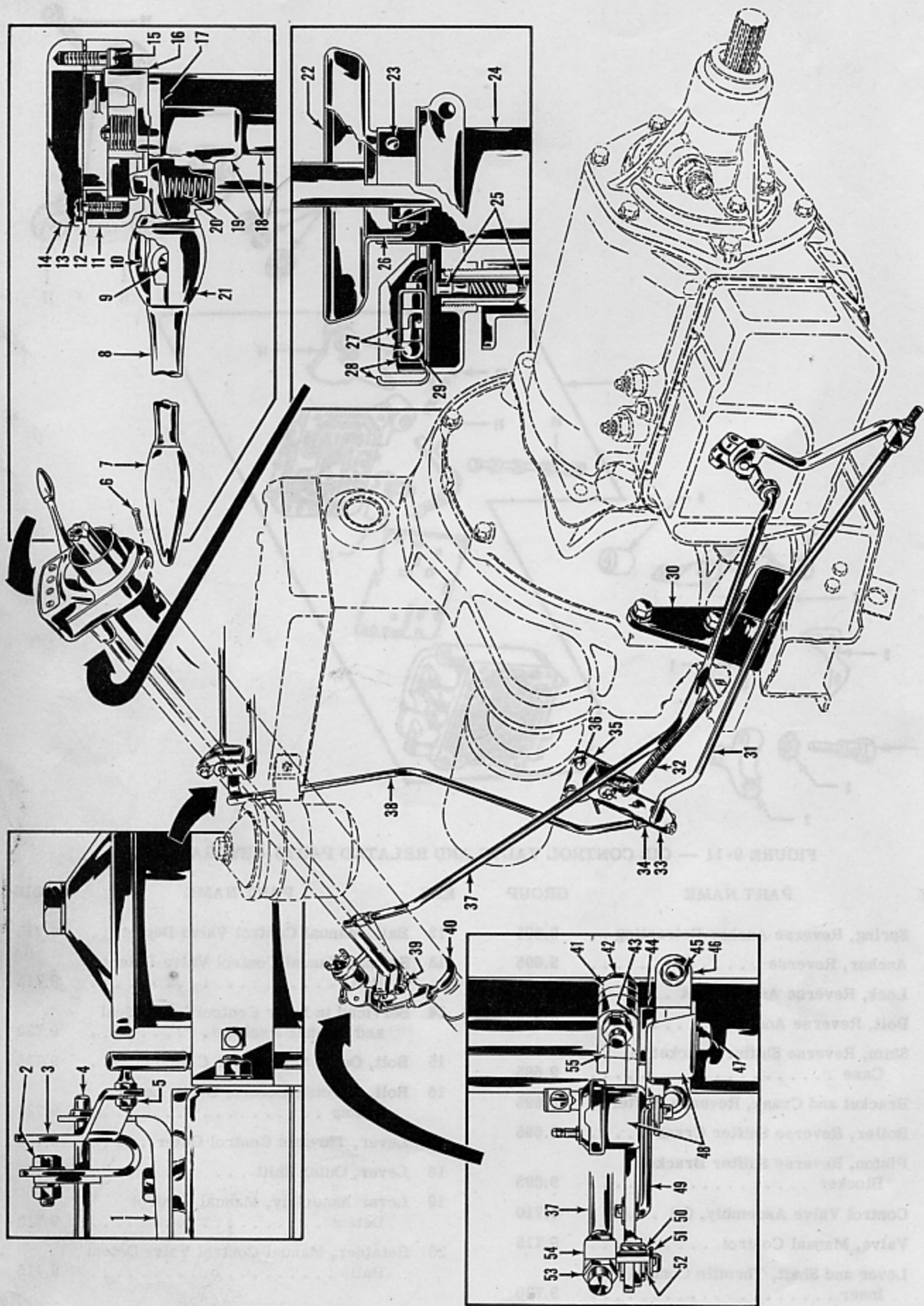


FIGURE 9-12 — GEAR SHIFT AND THROTTLE CONTROLS - HYDRA-MATIC

FIGURE 9-12 — GEAR SHIFT AND THROTTLE CONTROLS - HYDRA-MATIC

KEY	PART NAME	GROUP	KEY	PART NAME	GROUP
1	Bracket, Carb. Extension Shaft to Cylinder Head	3.450	29	Bulb, Gear Shift Lever Indicator Light	9.745
2	Bolt, Throttle Control Upper Bellcrank	9.795	30	Insulator, Engine Support Rear, Left	1.020
3	Bellcrank, Throttle Control Upper	9.795	31	Rod Assembly, Throttle Control Lower Bellcrank to Trans.	9.810
4	Shaft, Carburetor Extension	3.450	32	Spring, Throttle Control Pull Back	9.805
5	Nut, Throttle Control Upper to Lower Bellcrank Rod	9.800	33	Bellcrank, Throttle Control Lower	9.805
6	Bolt, Gear Shift Shaft Upper Bracket	9.755	34	Swivel, Throttle Control Upper to Lower Bellcrank Rod	9.800
7	Knob, Gear Shift Upper Lever	9.735	35	Bracket Assembly, Throttle Control Lower Bellcrank	9.805
8	Lever, Gear Shift Upper	9.735	36	Bolt, Throttle Control Lower Bellcrank Bracket	9.805
9	Pin, Gear Shift Upper Lever	9.735	37	Rod, Gear Shift Lower Lever to Trans.	9.775
10	Retainer, Gear Shift Lever Anti-Rattle Washer	9.735	38	Rod, Throttle Control Upper to Lower Bellcrank	9.800
11	Bracket, Gear Shift Shaft Upper	9.755	39	Spring, Gear Shift Lower Bracket Anti-Rattle	9.760
12	Plate, Gear Shift Shaft Upper Bracket	9.755	40	"U" Bolt, Gear Shift Lower Bracket	9.760
13	Screw with L/W, Gear Shift Shaft Upper Bracket Plate	9.755	41	Lever Assembly, Gear Shift Shaft Lower	9.770
14	Cover and Lens, Gear Shift Lever Indicator	9.750	42	Bolt, Gear Shift Shaft Lower Lever	9.770
15	Screw with L/W, Gear Shift Lever Indicator Cover and Lens	9.750	43	Washer, Gear Shift Lower Bracket Seal	9.760
16	Link Block Assembly, Gear Shift Lever Indicator	9.745	44	Seal, Gear Shift Lower Bracket to Lever	9.760
17	Screw with L/W, Gear Shift Lever Indicator Link Block	9.745	45	Nut, Gear Shift Lower Bracket "U" Bolt	9.760
18	Shaft Assembly, Gear Shift	9.740	46	Bracket, Gear Shift Lower	9.760
19	Retainer, Gear Shift Upper Lever Spring	9.735	47	Bolt, Gear Shift Neutralizer Switch	9.765
20	Spring, Gear Shift Upper Lever	9.735	48	Switch, Gear Shift Neutralizer	9.765
21	Cover, Gear Shift Upper Lever	9.735	49	Rod, Gear Shift Neutralizer Switch to Lever	9.765
22	Ring, Horn Blowing Ring Trim	7.527	50	Bushing, Gear Shift Shaft Lower Lever	9.770
23	Screw, Horn Blowing Ring Trim Ring	7.527	51	Washer, Gear Shift Lower Lever to Trans. Rod	9.775
24	Jacket, Steering Column	14.106	52	Springwasher, Gear Shift Lower Lever to Trans. Rod	9.775
25	Cable Assembly, Gear Shift Lever Indicator Light	9.745	53	Jam Nut, Gear Shift Lower Lever to Trans. Rod Trunion	9.775
26	Retainer, Steering Column Jacket Bearing	14.108	54	Trunion, Gear Shift Lower Lever to Trans. Rod	9.775
27	Light and Shield Assembly, Gear Shift Lever Indicator	9.745	55	Key, Gear Shift Shaft Lower Lever	9.770
28	Indicator and Light Assembly, Gear Shift Lever	9.745			

TRANSMISSION and CONTROLS

FIGURE NUMBER	GROUP, PART NAME and DESCRIPTION	PART NUMBER	USED PER CAR MODEL	
			511	512
	NOTE: For Hydra-Matic Transmission see Group 9.500.			
	9.000 - TRANSMISSION - STANDARD AND OVERDRIVE			
	Transmission, Standard	207955	1	1
	Transmission, Overdrive.	207956	1	1
	Bolt, 7/16"-14 x 1 1/4" Hx. Hd.	265	4	4
	Lockwasher, 7/16" Med.	193	4	4
	9.004 - TRANSMISSION FLOOR PAN COVER			
	Cover, Oil Filler Access Hole (4" Dia.)	208066	1	1
	Gasket	208067	1	1
	Screw, No. 12-11 x 1/2" Pan Hd. Cr. Rec. Tap	765	*	*
	Cover, Oil Filler Access Hole (4 1/2" Sq.)	208068	1	1
	Gasket	208069	1	1
	Cover, Adjustment Hole (7" Long)	208070	1	1
	Gasket	208071	1	1
	Bolt, 1/4"-20 x 1/2" Rd. Hd. Cr. Rec.	759	*	*
	Lockwasher, 1/4" Int. Ext. Tooth	400	*	*
	9.005 - TRANSMISSION CASE			
9-1-53	Case, Standard (incl. Plug)	207957	1	1
	Case, Overdrive (incl. Plug)	201269	1	1
9-1-54	Plug, Expansion, 13/16" Dia., 1/16" Thick	672	1	1
9-1-62	Plug, Filler and Drain, 1/2" Sq. Hd.	201270	2	2
	9.007 - TRANSMISSION CASE COVER			
9-1-1	Cover	201272	1	1
	Bolt, 5/16"-18 x 5/8" Hx. Hd.	208	6	6
	Lockwasher, 5/16" Med.	240	6	6
9-1-2	Gasket	201275	1	1
	9.100 - TRANSMISSION DRIVE PINION			
9-1-63	Pinion (incl. Bearing)	201273	1	1
	Bushing (in Crankshaft)	200064	1	1
	9.105 - TRANSMISSION DRIVE PINION BEARING			
9-1-58	Bearing	201274	1	1
9-1-59	Slinger	201287	1	1
	9.110 - TRANSMISSION DRIVE PINION BEARING SNAP RING			
9-1-57	Snap Ring, .0625 Thick, 2 11/16" I. D.	201286	1	1
9-1-56	Snap Ring, .086 Thick, 1 15/64" I. D.	201282	*	*
9-1-56	Snap Ring, .089 Thick, 1 15/64" I. D.	201283	*	*
9-1-56	Snap Ring, .092 Thick, 1 15/64" I. D.	201284	*	*
9-1-56	Snap Ring, .095 Thick, 1 15/64" I. D.	201285	*	*
	9.115 - TRANSMISSION DRIVE PINION BEARING RETAINER			
9-1-55	Retainer	201276	1	1
	Bolt, 5/16"-18 x 7/8" Hx. Hd.	201277	3	3

* As Required

TRANSMISSION and CONTROLS

9

FIGURE NUMBER	GROUP, PART NAME and DESCRIPTION	PART NUMBER	USED PER CAR MODEL	
			511	512
	9.115 - TRANSMISSION DRIVE PINION BEARING RETAINER (Cont'd)			
	Lockwasher, 5/16"	240	3	3
	9.117 - TRANSMISSION DRIVE PINION BEARING RETAINER GASKET			
9-1-61	Gasket, .009	201278	*	*
9-1-61	Gasket, .0135	201279	*	*
9-1-61	Gasket, .018	201280	*	*
9-1-61	Gasket, .025	201281	*	*
	9.120 - TRANSMISSION MAIN SHAFT			
	Shaft, Standard Trans. { incl. Synchronizer Unit, Second	212318	1	1
	Shaft, Overdrive Trans. { Speed Idler, Low and Reverse Gear }	201289	1	1
9-1-12	Shaft, Standard Trans.	212319	1	1
9-2-1	Shaft, Overdrive Trans.	201291	1	1
9-1-11	Bearing, Roller	201292	14	14
	9.125 - TRANSMISSION SECOND AND HIGH SYNCHRONIZER			
9-1-10	Synchronizer Unit (incl. Hub, Sleeve, Shifting Plate and Snap Rings).	201293	1	1
9-1-7	Hub	201294	1	1
9-1-14	Snap Ring	201282	1	1
	9.130 - TRANSMISSION SECOND AND HIGH SYNCHRONIZER SLEEVE			
9-1-9	Sleeve	201295	1	1
9-1-8	Plate, Shifting	201296	3	3
9-1-6	Snap Ring	201297	2	2
9-1-5	Blocking Ring	201298	2	2
	9.135 - TRANSMISSION SLIDING GEAR			
9-1-4	Gear, Second Speed Idler (incl. Bushing).	201299	1	1
9-1-3	Gear, Low and Reverse	201300	1	1
	9.140 - TRANSMISSION MAIN SHAFT BEARING			
9-1-30	Bearing (Standard Trans.)	201274	1	1
9-2-3	Bearing (Overdrive Trans.)	201301	1	1
9-1-29	Snap Ring, .086 Thick, 2 31/32" O. D.	201302	*	*
9-1-29	Snap Ring, .089 Thick, 2 31/32" O. D.	201303	*	*
9-1-29	Snap Ring, .092 Thick, 2 31/32" O. D.	201304	*	*
9-1-29	Snap Ring, .095 Thick, 2 31/32" O. D.	201305	*	*
9-2-4	Snap Ring, .086 Thick, 1 15/64" I. D.	201282	*	*
9-2-4	Snap Ring, .089 Thick, 1 15/64" I. D.	201283	*	*
9-2-4	Snap Ring, .092 Thick, 1 15/64" I. D.	201284	*	*
9-2-4	Snap Ring, .095 Thick, 1 15/64" I. D.	201285	*	*
9-2-5	Baffle.	201306	1	1
	9.145 - TRANSMISSION MAIN SHAFT BEARING RETAINER AND ADAPTER			
9-1-34	Retainer, Standard Trans.	208712	1	1
9-1-23	Bolt, 3/8"-16 x 7/8" Hx. Hd.	268	3	3

* As Required

TRANSMISSION and CONTROLS

FIGURE NUMBER	GROUP, PART NAME and DESCRIPTION	PART NUMBER	USED PER CAR MODEL	
			511	512
	9.145 - TRANSMISSION MAIN SHAFT BEARING RETAINER AND ADAPTER (Cont'd)			
	Bolt, 3/8"-16 x 1" Hx. Hd	181	1	1
9-1-24	Lockwasher, 3/8" Ext. Tooth	291	4	4
9-1-33	Gasket, Standard Trans	201309	1	1
9-1-36	Oil Seal, Standard Trans	207960	1	1
9-1-35	Bushing, Standard Trans. (in Retainer).	207961	1	1
9-2-7	Adapter, Overdrive Housing	201308	1	1
9-2-6	Gasket, Overdrive Adapter to Trans. Case	200895	1	1
	9.155 - TRANSMISSION COUNTERSHAFT GEAR CLUSTER			
9-1-16	Gear Cluster	201313	1	1
9-1-15	Thrustwasher, Front (Bronze)	201314	1	1
9-1-17	Thrustwasher, Rear (1 15/16" O. D.)	201315	1	1
9-1-18	Thrustwasher, Rear (1 29/32" O. D.)	201316	1	1
	9.160 - TRANSMISSION COUNTERSHAFT GEAR BEARINGS			
9-1-21	Bearing (Roller).	201317	44	44
9-1-20	Spacer	201318	1	1
9-1-19	Washer	201319	2	2
	9.165 - TRANSMISSION COUNTERSHAFT			
9-1-22	Countershaft	201312	1	1
	9.170 - TRANSMISSION REVERSE IDLER GEAR			
9-1-28	Gear (incl. Bushing)	201320	1	1
9-1-27	Bushing	201321	1	1
	9.175 - TRANSMISSION REVERSE IDLER GEAR SHAFT			
9-1-26	Shaft	201322	1	1
9-1-25	Lockplate	201323	1	1
	9.180 - TRANSMISSION SHIFTING LEVER - INNER			
9-1-50	Lever and Shaft, Second and High	204845	1	1
9-1-38	Lever and Shaft, Low and Reverse	204844	1	1
9-1-52	Pin	201327	2	2
9-1-49	Oil Seal	200903	2	2
	9.185 - TRANSMISSION SHIFTING FORK AND SHOE			
9-1-51	Fork, Second and High	201325	1	1
9-1-37	Shoe, Low and Reverse	201324	1	1
	9.190 - TRANSMISSION SHIFTING LEVER POPPET BALL			
9-1-45	Ball	201329	2	2
9-1-39	Spring	201330	1	1

TRANSMISSION and CONTROLS

9

FIGURE NUMBER	GROUP, PART NAME and DESCRIPTION	PART NUMBER	USED PER CAR MODEL	
			511	512
			9.190 - TRANSMISSION SHIFTING LEVER POPPET BALL (Cont'd)	
9-1-40	Pin (Grooved)	204846	1	1
9-1-46	Sleeve (not marked) 1.299 Long.	201331	*	*
9-1-46	Sleeve (marked "A") 1.295 Long	201332	*	*
9-1-46	Sleeve (marked "B") 1.291 Long	201333	*	*
9-1-46	Sleeve (marked "C") 1.287 Long	201334	*	*
9-1-46	Sleeve (marked "D") 1.303 Long	201335	*	*
9.195 - TRANSMISSION SHIFTING LEVER - OUTER				
9-1-48	Lever, Second and High (incl. Insulator)	207962	1	1
9-1-44	Lever, Low and Reverse (incl. Insulator)	207963	1	1
9-1-41	Flatwasher, 5/16"	201339	2	2
9-1-42	Lockwasher, 5/16" Med.	240	2	2
9-1-43	Nut, 5/16"-18 Hx	205	2	2
9-1-47	Insulator.	201340	2	2
9.200 - TRANSMISSION OVERDRIVE HOUSING				
9-2-36	Housing	208065	1	1
9-2-37	Bolt	200866	4	4
9-2-38	Lockwasher.	193	4	4
9-2-35	Gasket (to Adapter)	201310	1	1
9-2-39	Plug, Filler and Drain	121	2	2
NOTE: For Transmission Main Shaft Bearing Retainer and Adapter see Group 9.145.				
9.205 - TRANSMISSION OVERDRIVE GEAR AND BLOCKING RING - STATIONARY				
9-2-8	Gear and Blocking Ring	200870	1	1
	Blocking Ring	200876	1	1
9.210 - TRANSMISSION OVERDRIVE STATIONARY GEAR				
9-2-11	Gear (incl. Shifting Collar and Snap Rings)	200871	1	1
	Snap Ring (1 15/32" I. D.)	200872	2	2
	Gear	200873	1	1
	Collar	200874	1	1
9-2-28	Pawl	204847	1	1
9.215 - TRANSMISSION OVERDRIVE STATIONARY GEAR COVER PLATE				
9-2-9	Plate	200877	1	1
9-2-10	Snap Ring, .0625 Thick	200878	*	*
9-2-10	Snap Ring, .0705 Thick	200879	*	*
9-2-10	Snap Ring, .0665 Thick	200880	*	*
9.220 - TRANSMISSION OVERDRIVE STATIONARY GEAR PINION CAGE				
9-2-12	Cage (incl. Pinions, Shafts, Pins, Oil Ring, Bearing Rollers and Spacers). . .	200882	1	1

* As Required

TRANSMISSION and CONTROLS

FIGURE NUMBER	GROUP, PART NAME and DESCRIPTION	PART NUMBER	USED PER CAR MODEL	
			511	512
	9.225 - TRANSMISSION OVERDRIVE FREE WHEELING CAM			
9-2-13	Cam (incl. Rollers, Retainer, Spring and Cage Clips)	200883	1	1
9-2-14	Clip (Cam to Shaft)	200884	1	1
	9.230 - TRANSMISSION OVERDRIVE FREE WHEELING CAM BEARING			
9-2-16	Bearing, Roller	200885	12	12
9-2-15	Retainer	200886	1	1
9-2-17	Spring	200888	2	2
	9.235 - TRANSMISSION OVERDRIVE MAIN SHAFT			
9-2-32	Shaft (incl. Ring Gear and Snap Ring)	212320	1	1
9-2-50	Oil Seal	207965	1	1
	9.240 - TRANSMISSION OVERDRIVE MAIN SHAFT BEARING			
9-2-51	Bearing	207966	1	1
9-2-46	Snap Ring (to Overdrive Housing)	207967	1	1
9-2-47	Washer	207968	1	1
9-2-48	Snap Ring, .087 Thick	207969	*	*
9-2-48	Snap Ring, .090 Thick	207970	*	*
9-2-48	Snap Ring, .093 Thick	207971	*	*
9-2-48	Snap Ring, .096 Thick	207972	*	*
			} to }	
			} Shaft }	
	9.245 - TRANSMISSION OVERDRIVE RING GEAR			
9-2-31	Ring Gear	208325	1	1
9-2-34	Snap Ring, .062 Thick	200892	*	*
	9.247 - TRANSMISSION OVERDRIVE MAIN SHAFT SLIP JOINT HOUSING			
9-2-49	Housing	207973	1	1
	Bolt	201277	3	3
	Lockwasher	240	3	3
	Gasket, .003 Thick	207974	*	*
	Gasket, .006 Thick	207975	*	*
	Gasket, .009 Thick	207976	*	*
	Gasket, .012 Thick	207977	*	*
	9.250 - TRANSMISSION OVERDRIVE SHIFT FORK			
9-2-26	Fork	204848	1	1
9-2-22	Rail	204849	1	1
9-2-27	Guide	200901	1	1
9-2-25	"C" Washer	204850	1	1
9-2-24	Cup	204855	1	1
	9.255 - TRANSMISSION OVERDRIVE SHIFT CONTROL SHAFT			
9-2-21	Shaft	200902	1	1
9-2-54	Pin	201327	1	1
9-2-23	Spring, Lockup	204856	1	1

*As Required

TRANSMISSION and CONTROLS

9

FIGURE NUMBER	GROUP, PART NAME and DESCRIPTION	PART NUMBER	USED PER CAR MODEL	
			511	512
			9.255 - TRANSMISSION OVERDRIVE SHIFT CONTROL SHAFT (Cont'd)	
9-2-18	Spring, Retractor	200900	1	1
9-2-20	Oil Seal	200903	1	1
9.260 - TRANSMISSION OVERDRIVE CONTROL SHAFT LEVER				
9-2-19	Lever	207978	1	1
	Flatwasher	201339	1	1
	Lockwasher, 5/16" Med	240	1	1
	Nut, 5/16"-18 Hx	205	1	1
9.265 - TRANSMISSION OVERDRIVE GOVERNOR				
9-2-41	Governor	209597	1	1
	Screw, Terminal, No. 8-32 x 1/4" Rd. Hd. Cr. Rec	357	1	1
	Lockwasher, No. 8	273	1	1
9-2-43	Pinion (15 Teeth)	200909	1	1
9-2-44	Gear	207979	1	1
9-2-33	Key (to Main Shaft) 1/8" x 1/2" Woodruff No. 3	208641	1	1
9-2-40	Sleeve	200905	1	1
9-2-42	Retainer	200906	1	1
	Boot (Rubber)	203101	1	1
9.270 - TRANSMISSION OVERDRIVE CONTROL				
19-1-21	Control and Bracket	212463	1	1
	Screw, No. 10-32 x 7/16" Rd. Hd. Cr. Rec	539	2	2
	Lockwasher, No. 10 Int. Tooth	259	2	2
	Nut, No. 10-32 Hx.	202	2	2
	Screw, No. 10-32 x 7/16" Ov. Hd. Cr. Rec	978	2	2
	Lockwasher, No. 10 Int. Ext. Tooth	292	2	2
	Bolt	207263	1	1
	Sleeve	207264	1	1
	Flatwasher, 1/4"	243	1	1
	Lockwasher, 1/4" Med.	190	1	1
	Nut, 1/4"-28 Hx.	261	1	1
	Grommet (thru Cowl)	206637	1	1
	Reinforcement (on Inst. Panel)	208060	1	1
	Bracket (at Transmission)	208061	1	1
9.282 - SPEEDOMETER CABLE				
	Cable and Housing (WO/OD) (61 1/2" Long)	208463	1	1
	Cable and Housing (W/OD) (73 1/2" Long)	203521	1	1
	Bolt, 1/4"-20 x 9/16" Rd. Hd. Sl.	440	1	1
	Lockwasher, 1/4" Med	190	1	1
	Gasket	200923	1	1
	Clip (to Overdrive Cable)	203018	1	1
	Clip (to Frame "X" Member)	208612	1	1
	Grommet (on Cowl)	208062	1	1
	Retainer	208063	2	2
	Screw, No. 10-12 x 3/8" Rd. Hd. Cr. Rec. Tap	609	2	2
	Clip (to Clutch Housing)	205336	1	1

9 TRANSMISSION and CONTROLS

FIGURE NUMBER	GROUP, PART NAME and DESCRIPTION	PART NUMBER	USED PER CAR MODEL	
			511	512
			9.284 - SPEEDOMETER CABLE CORE	
	Core (WO/OD) (61" Long)	204263	1	1
	Core (W/OD) (73" Long)	203523	1	1
9.286 - SPEEDOMETER DRIVE GEAR AND PINION				
9-1-31	Gear (Standard Trans.)	207980	1	1
9-1-13	Key, 1/8" x 1/2" Woodruff No. 3	208641	1	1
9-1-32	Snap Ring, .087 Thick	207969	*	*
9-1-32	Snap Ring, .090 Thick	207970	*	*
9-1-32	Snap Ring, .093 Thick	207971	*	*
9-1-32	Snap Ring, .096 Thick	207972	*	*
9-2-45	Gear (Overdrive Trans.)	207981	1	1
9-2-33	Key, 1/8" x 1/2" Woodruff No. 3	208641	1	1
	Pinion, Driven (4.09 Rear Axle Ratio) (18 Teeth)	207982	1	1
	Pinion, Driven (3.91 Rear Axle Ratio) (17 Teeth)	207983	1	1
	Pinion, Driven (4.27 Rear Axle Ratio) (19 Teeth)	207984	1	1
	Pinion, Driven (4.55 Rear Axle Ratio) (20 Teeth)	207328	1	1
9.300 - TRANSMISSION GEAR SHIFT LEVER				
9-3-24	Lever, Upper	207985	1	1
9-3-27	Retainer	207986	1	1
9-3-22	Pivot Pin	207987	2	2
9-3-25	Spring, Pivot Pin	207988	1	1
9-3-23	Knob	207989	1	1
9.310 - TRANSMISSION GEAR SHIFT SHAFT				
9-3-18	Shaft, Upper	207990	1	1
9-3-26	Spring, Shaft End to Lever	207991	1	1
9-3-21	Guide	207992	1	1
9-3-20	Bracket (to Steering Gear Jacket)	207993	1	1
9-3-19	Bolt with L/W	208646	2	2
9-3-16	Clamp (Upper to Lower Shaft)	207994	1	1
9-3-17	Bolt, 5/16"-24 x 1 1/4" Hx. Hd.	418	2	2
9-3-15	Lockwasher, 5/16" Ext. Tooth	348	2	2
9-3-14	Nut, 5/16"-24 Hx	189	2	2
9-3-8	Shaft, Lower (incl. Cam)	207995	1	1
9.320 - TRANSMISSION GEAR SHIFT LEVER - LOWER				
9-3-29	Lever, Low and Reverse	207996	1	1
9-3-9	Spring, Lever to Cam	207997	1	1
9-3-13	Dust Seal (Rubber)	207266	1	1
9-3-6	Lever, Second and High	207999	1	1
9-3-7	Washer, Lever to Cam (Felt)	208000	1	1
9-3-3	Insulator, Lever to Rod	206649	2	2
9-3-30	Housing	208001	1	1
9-3-10	Cover	208002	1	1
9-3-11	Bolt with L/W	208647	4	4
9-3-12	Plug	205453	1	1
9-3-31	Clamp, Housing to Steering Gear Jacket	208003	1	1
9-3-33	Bolt, 5/16"-24 x 1 1/4" Hx. Hd.	418	2	2
9-3-32	Lockwasher, 5/16" Ext. Tooth	348	2	2

* As Required

TRANSMISSION (HYDRA-MATIC)

9

FIGURE NUMBER	GROUP, PART NAME and DESCRIPTION	PART NUMBER	USED PER CAR MODEL	
			511	512
			9.340 - TRANSMISSION GEAR SHIFT ROD	
9-3-28	Rod, Low and Reverse.	208004	1	1
9-3-34	Rod, Second and High	208005	1	1
9-3-1	Pivot	208006	2	2
9-3-2	Jamnut, 3/8"-24 Hx.	188	4	4
	Sleeve	204299	2	2
9-3-5	Flatwasher, 3/8" Sm.	247	4	4
	Springwasher, 3/8".	201263	2	2
9-3-4	Clip	205690	2	2
	Flatwasher, 1/4" Lg.	344	4	4
	Cotter Pin, 3/32" Dia.	791	2	2
9.500 - TRANSMISSION - HYDRA-MATIC				
<p>NOTE: For Standard and Overdrive Transmissions see Group 9.000. Two (2) Hydra-Matic Transmissions have been used and are identified on Transmission Serial Number Plate by prefix K50 or prefix K51. Parts peculiar to K50 are indicated by symbol (#). Parts peculiar to K51 are indicated by symbol (†). All Parts not Marked are Interchangeable on Both Model Transmissions.</p>				
	#Transmission (less Torus and Flywheel).	209012	1	1
	†Transmission (less Torus and Flywheel).	209347	1	1
	Bolt (to Clutch Housing) 1/2"-13 x 1 3/8" Hx. Hd.	876	4	4
	Bolt, 1/2"-13 x 1 1/4" Hx. Hd.	437	4	4
	Lockwasher, 1/2" Med	479	4	4
	#Gasket (to Clutch Housing)	209013	1	1
	#Gasket Set, Overhaul	209028	*	*
	Consists of:			
	1 - 209013 Gasket, Case to Clutch Housing			
	1 - 209025 Gasket, Torus Cover			
	1 - 209033 Gasket, Case Side Cover			
	1 - 209035 Gasket, Oil Pan			
	1 - 209042 Gasket, Rear Bearing Retainer			
	1 - 209048 Gasket, Case Front Cover			
	1 - 209055 Gasket, Front Pump Intake			
	†Gasket Set, Overhaul	209407	*	*
	Consists of:			
	1 - 209025 Gasket, Torus Cover			
	1 - 209351 Gasket, Case Side Cover			
	1 - 209035 Gasket, Oil Pan			
	1 - 209353 Gasket, Rear Bearing Retainer			
	1 - 209048 Gasket, Case Front Cover			
	1 - 209055 Gasket, Front Pump Intake			
9.505 - HYDRA-MATIC TORUS MEMBER				
9-4-9	Torus, Driven (Front)	209014	1	1
9-4-10	Locking Washer	209027	1	1
9-4-11	Nut	209026	1	1
	Spacer, Driven Torus to Pilot Bearing	209229	1	1
9-4-5	#Ring, Driven Torus Retaining (Horse Shoe)	209019	1	1

*As required #Parts Peculiar to Model K50 Transmission †Parts Peculiar to Model K51 Transmission

TRANSMISSION (HYDRA-MATIC)

FIGURE NUMBER	GROUP, PART NAME and DESCRIPTION	PART NUMBER	USED PER CAR MODEL	
			511	512
	9.505 - HYDRA-MATIC TORUS MEMBER (Cont'd)			
	†Ring, Driven Torus Retaining (Horse Shoe)	209345	1	1
9-4-13	Torus, Driving (Rear)	209015	1	1
9-4-4	Snap Ring	209020	1	1
9-4-7	#Check Valve	209016	1	1
	†Check Valve	209344	1	1
9-4-6	Retainer, Check Valve	209017	1	1
	Bolt, 1/4"-20 x 3/8" Hx. Hd	506	2	2
9-4-8	Spring, Check Valve	209018	1	1
9-4-2	Cover, Torus	209021	1	1
	Bolt, 5/16"-24 x 5/8" Hx. Hd	209022	30	30
	Lockwasher, 5/16" Med.	240	30	30
	Name Plate	209030	1	1
	Drive Screw	885	2	2
9-4-1	Plug, Cover	209024	1	1
9-4-3	Gasket, Torus Cover to Flywheel	209025	1	1
	9.510 - HYDRA-MATIC CASE AND COVERS			
9-5-19	#Case	209029	1	1
	†Case	209348	1	1
9-5-6	Plug, Case, 1/8" Pipe Hx. Hd	209024	1	1
9-5-8	#Cover, Side	209031	1	1
	†Cover, Side	209349	1	1
	Bolt with Washer	209032	5	5
	Bolt with Washer	209350	7	7
9-5-4	#Gasket, Side Cover	209033	1	1
	†Gasket, Side Cover	209351	1	1
	9.515 - HYDRA-MATIC CASE OIL PAN			
9-5-15	Oil Pan	209034	1	1
	Bolt, 5/16"-18 x 1/2" Hx. Hd	322	12	12
	Lockwasher, 5/16" Ext. Tooth	348	12	12
9-5-18	Gasket, Oil Pan	209035	1	1
9-5-17	Plug and Gasket, Oil Pan	209036	1	1
9-5-16	Gasket, Plug	209037	1	1
	9.520 - HYDRA-MATIC OIL LEVEL INDICATOR			
9-5-5	Indicator (incl. Breather)	209038	1	1
	Sleeve	209039	1	1
	9.525 - HYDRA-MATIC REAR BEARING RETAINER (OR REAR FLANGE)			
9-5-2	#Retainer (incl. Bushing)	209040	1	1
	†Retainer (incl. Reverse Piston Pins)	209352	1	1
	Bolt, 3/8"-16 x 1" Hx. Hd	181	5	5
	Bolt, 3/8"-16 x 1 7/8" Hx. Hd	717	5	5
	Flatwasher (Copper)	209041	4	4
	Lockwasher, 3/8" Med	192	5	5
9-5-3	#Gasket	209042	1	1
	†Gasket	209353	1	1
9-5-1	#Oil Seal	209043	1	1
	†Oil Seal	209354	1	1

*As Required #Parts Peculiar to Model K50 Transmission †Parts Peculiar to Model K51 Transmission

TRANSMISSION (HYDRA-MATIC)

9

FIGURE NUMBER	GROUP, PART NAME and DESCRIPTION	PART NUMBER	USED PER CAR MODEL	
			511	512
			<p>9.530 - HYDRA-MATIC FRONT OIL PUMP</p>	
9-6-11	#Pump, Oil	209044	1	1
	†Pump, Oil	209355	1	1
	Key, Drive Gear.	209049	1	1
<p>9.535 - HYDRA-MATIC FRONT OIL PUMP COVER ATTACHING PARTS</p>				
9-6-1	Gasket	209048	1	1
	Bolt, 5/16"-18 x 1/2" Hx. Hd	322	2	2
	Flatwasher, 5/16" Sm	225	2	2
	Flatwasher (Copper) 5/16"	881	2	2
9-9-52	Washer, Locating	209045	1	1
	Washer, 1/4" Copper (Cover to Body)	209050	3	3
9-6-2	#Screw and Washer Package.	209063	1	1
	Consists of:			
	3 - Bolt, Cover to Pump Body, 1/4"-20 x 5/8"			
	3 - Flatwasher, Cover to Pump Body, 1/4" Copper			
	1 - Bolt, Pump Body to Cover, 1/4"-20 x 1 3/8"			
	1 - Lockwasher, Pump Body to Cover, 1/4"			
	†Screw and Washer Package.	209356	1	1
	Consists of:			
	3 - Bolt, Cover to Pump Body, 1/4"-20 x 5/8"			
	3 - Flatwasher, Cover to Pump Body, 1/4" Copper			
	1 - Bolt, Pump Body to Cover, 1/4"-20 x 1 1/2"			
	1 - Lockwasher, Pump Body to Cover, 1/4"			
<p>9.540 - HYDRA-MATIC FRONT OIL PUMP COVER OIL SEAL</p>				
9-6-8	Oil Seal	209046	1	1
9-6-7	Ring, Oil Seal	209047	2	2
<p>9.545 - HYDRA-MATIC FRONT OIL PUMP PIPES</p>				
9-5-12	Pipe (to Front Servo)	209051	1	1
	Pipe (to Front Servo Oil Transfer)	209052	1	1
9-10-13	Pipe, Inlet (incl. Flange)	209053	1	1
	Bolt, 1/4"-20 x 5/8" Hx. Hd	257	2	2
	Lockplate	209054	1	1
9-10-12	Gasket, Flange	209055	1	1
9-10-14	Screen, Oil Pump Intake	209056	1	1
<p>9.550 - HYDRA-MATIC FRONT PUMP RELIEF VALVE (BY PASS)</p>				
9-6-9	#Valve	209057	1	1
	†Valve	209357	1	1
9-6-10	#Spring	209058	1	1
	†Spring	209358	1	1
<p>9.555 - HYDRA-MATIC OIL PRESSURE REGULATOR VALVE</p>				
9-6-3	Valve	209059	1	1
9-6-5	#Spring	209060	1	1
	†Spring	209359	1	1

#Parts Peculiar to Model K50 Transmission †Parts Peculiar to Model K51 Transmission

9 TRANSMISSION (HYDRA-MATIC)

FIGURE NUMBER	GROUP, PART NAME and DESCRIPTION	PART NUMBER	USED PER CAR MODEL	
			511	512
	9.555 - HYDRA-MATIC OIL PRESSURE REGULATOR VALVE (Cont'd)			
9-6-6	#Plug (incl. Pin)	209061	1	1
	†Plug Package, Oil Pressure Regulator and Reverse Booster	209360	1	1
9-6-4	#Gasket, Plug	209062	1	1
	†Gasket, Plug	209361	1	1
	9.560 - HYDRA-MATIC FRONT UNIT DRIVE GEAR AND CARRIER			
9-9-53	Gear (incl. Front Bushing)	209064	1	1
9-4-15	Thrustwasher, Front (Steel)	209065	1	1
9-4-16	Thrustwasher, Front (Bronze)	209066	1	1
9-4-14	Snap Ring	209020	1	1
9-9-51	Thrustwasher, Rear (Bronze)	209067	1	1
9-9-50	Carrier (incl. Shaft, Planet Pinion and Bearings)	209068	1	1
	9.565 - HYDRA-MATIC FRONT DRUM			
9-9-48	Drum, Front Brake (incl. Pins)	209069	1	1
9-9-41	Drum, Front Clutch (incl. Bushings)	209070	1	1
9-9-38	Thrustwasher, Rear (Steel)	209071	1	1
9-9-39	Thrustwasher, Rear (Bronze)	209067	1	1
9-9-37	Snap Ring	209020	1	1
	9.570 - HYDRA-MATIC FRONT CLUTCH DRIVE PLATE			
9-9-47	Plate (incl. Facing)	209072	3	3
9-9-44	Plate (Steel)	209073	3	3
9-9-46	Spring, Release (Inner)	209074	6	6
9-9-45	Spring, Release (Outer)	209075	6	6
9-9-43	Piston, Clutch Control Annular	209076	1	1
9-9-40	Snap Ring	209077	1	1
9-9-42	Expander and Seal Package, Clutch Control Piston	209078	1	1
	Consists of:			
	1 - Seal, Piston, 2 7/8" Dia.			
	1 - Seal, Piston, 5 1/8" Dia.			
	1 - Expander, Piston Oil Seal, Inner			
	1 - Expander, Piston Oil Seal, Outer			
	9.575 - HYDRA-MATIC BRAKE DRUM OIL DELIVERY SLEEVE			
9-9-35	Sleeve, Oil Delivery (incl. Bushing)	209079	1	1
9-9-34	Ring, Oil Seal (3/32" x 2")	209080	4	4
	Bolt, Oil Delivery Cap, 7/16"-14 x 2 1/2" Hx. Hd	883	2	2
9-9-36	Lockplate, Oil Delivery Cap Bolt	209081	1	1
	9.580 - HYDRA-MATIC FRONT CLUTCH SERVO BAND			
9-9-49	Band and Lining	209082	1	1
9-5-7	Screw, Adjusting	209083	1	1
	Jamnut, Adjusting Screw, 1/2"-20 Hx	632	1	1
	9.585 - HYDRA-MATIC FRONT SERVO BODY			
9-7-11	Body	209084	1	1

#Parts Peculiar to Model K50 Transmission

†Parts Peculiar to Model K51 Transmission

TRANSMISSION (HYDRA-MATIC)

9

FIGURE NUMBER	GROUP, PART NAME and DESCRIPTION	PART NUMBER	USED PER CAR MODEL	
			511	512
	9.585 - HYDRA-MATIC FRONT SERVO BODY (Cont'd)			
	Bolt, 3/8"-16 x 2" Hx. Hd	879	1	1
	Bolt, 3/8"-16 x 1" Hx. Hd	181	1	1
	Lockwasher, 3/8" Med	192	2	2
9-7-2	Dowel, 1/8" x 1/2" Steel	893	1	1
9-7-10	Plug, 1/8" Pipe Hd'ls	527	1	1
9-7-9	Plug, 1/8" Pipe Hx. Hd	209024	1	1
	9.590 - HYDRA-MATIC FRONT SERVO CYLINDER			
9-7-19	Cylinder	209085	1	1
	Bolt, 1/4"-20 x 3/4" Hx. Hd	529	2	2
	Lockwasher, 1/4" Med	190	2	2
	9.595 - HYDRA-MATIC FRONT SERVO BAND PISTONS			
9-7-17	Piston, Release	209086	1	1
9-7-18	Ring, Release Piston	209088	1	1
9-7-13	Piston, Apply (incl. Ring)	209087	1	1
9-7-1	Ring, Apply Piston	209089	1	1
9-7-14	Spring, Servo Retracting	209090	1	1
9-7-15	Retainer	209092	1	1
9-7-16	Spring, Servo Booster	209091	1	1
	9.600 - HYDRA-MATIC FRONT SERVO DOWNSHIFT 4TH TO 3RD VALVE			
9-7-7	Valve	209093	1	1
9-7-8	Retainer	209094	1	1
9-7-6	Plug, 1/4" Pipe Hd'ls. Sl	878	1	1
	9.605 - HYDRA-MATIC REAR PUMP DISCHARGE CHECK VALVE (IN FRONT SERVO BODY)			
9-7-4	Ball, 1/2" Dia	894	1	1
9-7-5	Spring	209095	1	1
9-7-3	Seat	209096	1	1
	9.610 - HYDRA-MATIC REAR DRUM			
9-9-27	Drum, Rear Brake (incl. Pins)	209097	1	1
9-9-28	Gear, Internal	209098	1	1
	Screw, No. 10-24 x 1" Fil. Hd	877	2	2
9-9-19	Drum, Rear Clutch (incl. Bushings)	209099	1	1
	9.615 - HYDRA-MATIC REAR CLUTCH PLATE			
9-9-23	Plate (incl. Facings)	209072	6	6
9-9-22	Plate (Steel)	209073	6	6
9-9-25	Spring, Release (Inner)	209074	6	6
9-9-26	Spring, Release (Outer)	209075	6	6
9-9-24	Pin, Release Spring Guide	209101	6	6
9-9-21	Piston, Clutch Control Annular	209100	1	1
9-9-18	Snap Ring	209077	1	1

TRANSMISSION (HYDRA-MATIC)

FIGURE NUMBER	GROUP, PART NAME and DESCRIPTION	PART NUMBER	USED PER CAR MODEL	
			511	512
	9.615 - HYDRA-MATIC REAR CLUTCH PLATE (Cont'd)			
9-9-20	Expander and Seal Package, Clutch Control Piston Consists of: 1 - Seal, Piston, 2 7/8" Dia. 1 - Seal, Piston, 5 1/8" Dia. 1 - Expander, Piston Oil Seal, Inner 1 - Expander, Piston Oil Seal, Outer	209078	1	1
	9.620 - HYDRA-MATIC REAR CLUTCH HUB			
9-9-31	Hub	209102	1	1
9-9-29	Snap Ring	209020	2	2
9-9-30	Thrustwasher (Bronze)	209103	2	2
	9.625 - HYDRA-MATIC REAR CLUTCH SERVO BAND			
9-9-17	Band and Lining	209104	1	1
	Screw, Adjusting	209083	1	1
	Jamnut, Adjusting Screw, 1/2"-20 Hx	632	1	1
9-8-17	Lever, Actuating	209105	1	1
9-8-15	Pin	209346	1	1
	Cotter Pin, 3/32" x 2 1/2"	791	2	2
9-8-16	Bearing, Actuating Lever	209225	18	18
	9.630 - HYDRA-MATIC REAR SERVO BODY			
9-8-14	#Body (incl. Plug)	209108	1	1
	†Body (incl. Plug)	209362	1	1
	Bolt, 3/8"-16 x 2" Hx. Hd	879	2	2
	Lockwasher, 3/8" Med	192	2	2
	9.635 - HYDRA-MATIC REAR SERVO BOOSTER PISTON			
9-8-12	Piston	209109	1	1
9-8-11	Ring, 3/32" x 2 1/4"	209110	1	1
9-8-13	Ring, 3/32" x 1 11/16"	209111	1	1
9-8-10	Spring, 1-5/16" Dia.	209112	1	1
	9.640 - HYDRA-MATIC REAR SERVO ACCUMULATOR CHECK VALVE			
9-8-20	#Body (incl. Check Valve)	209113	1	1
	†Body (incl. Check Valve)	209363	1	1
9-8-18	Plunger	209114	1	1
9-8-19	Check Valve and Rivet	209115	1	1
	9.645 - HYDRA-MATIC REAR SERVO ACCUMULATOR PISTON			
9-8-7	Piston	209116	1	1
9-8-8	Ring, 3/32" x 2 3/8"	209117	1	1
9-8-2	Spring, Main	209118	1	1
9-8-9	Spring, Apply (5/8" Dia.)	209119	1	1
	9.650 - HYDRA-MATIC REAR SERVO COMPENSATOR PISTON			
9-8-3	Piston	209120	1	1

#Parts Peculiar to Model K50 Transmission

†Parts Peculiar to Model K51 Transmission

TRANSMISSION (HYDRA-MATIC)

9

FIGURE NUMBER	GROUP, PART NAME and DESCRIPTION	PART NUMBER	USED PER CAR MODEL	
			511	512
	9.650 - HYDRA-MATIC REAR SERVO COMPENSATOR PISTON (Cont'd)			
9-8-4	Ring, 3/32" x 1 1/4"	209121	1	1
9-8-5	Spring, Outer, 7/8"	209122	1	1
9-8-6	Spring, Inner, 5/8"	209123	1	1
9-8-1	Retainer	209124	1	1
	Bolt, 5/16"-18 x 2" Hx. Hd	758	2	2
	Lockwasher, 5/16" Med.	240	2	2
	9.655 - HYDRA-MATIC REAR OIL PUMP FRONT SERVO DISCHARGE PIPE			
9-10-11	Pipe	209125	1	1
	9.660 - HYDRA-MATIC MAIN SHAFT AND GEAR			
9-9-32	Shaft and Gear	209126	1	1
9-9-33	Thrustwasher, .057 Thick	209127	1	1
9-9-33	Thrustwasher, .065 Thick	209128	1	1
9-9-33	Thrustwasher, .073 Thick	209129	1	1
9-9-33	Thrustwasher, .081 Thick	209130	1	1
9-9-33	Thrustwasher, .089 Thick	209131	1	1
9-9-33	Thrustwasher, .097 Thick	209132	1	1
9-9-33	Thrustwasher, .105 Thick	209133	1	1
9-9-33	Thrustwasher, .113 Thick	209134	1	1
	9.665 - HYDRA-MATIC REVERSE OUTPUT SHAFT AND PLANET GEARS			
9-9-16	#Shaft and Planet Gears (incl. Bushing)	209135	1	1
	†Shaft and Planet Gears (incl. Bushing)	209364	1	1
	9.670 - HYDRA-MATIC REVERSE UNIT OIL PUMP AND GOVERNOR DRIVE GEAR			
9-9-10	Gear (Bronze)	209136	1	1
9-9-11	Snap Ring	209137	1	1
9-9-9	Ball, 3/16" Dia.	895	1	1
	9.675 - HYDRA-MATIC REVERSE UNIT CENTER GEAR			
9-9-13	Gear (incl. Flange and Bushing).	209138	1	1
	Bolt, 5/16"-18 x 1 1/2" Hx. Hd.	330	6	6
	Lockwasher, 5/16" Ext. Tooth	348	6	6
9-9-14	Thrustwasher (Steel).	209139	1	1
9-9-15	Thrustwasher (Bronze)	209140	1	1
	9.680 - HYDRA-MATIC REVERSE UNIT PLANET CARRIER			
9-9-8	#Planet Carrier	209141	1	1
	†Planet Carrier	209365	1	1
9-9-12	Snap Ring	209142	*	*
	9.685 - HYDRA-MATIC REVERSE UNIT INTERNAL GEAR AND REVERSE PISTONS			
9-9-6	#Gear.	209143	1	1

*As Required #Parts Peculiar to Model K50 Transmission †Parts Peculiar to Model K51 Transmission

TRANSMISSION (HYDRA-MATIC)

FIGURE NUMBER	GROUP, PART NAME and DESCRIPTION	PART NUMBER	USED PER CAR MODEL	
			511	512
	9.685 - HYDRA-MATIC REVERSE UNIT INTERNAL GEAR AND REVERSE PISTONS (Cont'd)			
9-9-7	#Snap Ring	209144	1	1
9-9-5	#Support	209145	1	1
	Bolt, 3/8"-16 x 1" Hx. Hd	181	4	4
	Flatwasher, 3/8"	209041	4	4
	†Gear (incl. Bushing)	209368	1	1
	†Thrustwasher	209369	1	1
	†Cone, Stationary	209373	1	1
	†Key	209374	1	1
	†Piston	209375	1	1
	†Spring, Piston Release	209376	6	6
	†Retainer	209377	1	1
	†Snap Ring	209378	1	1
	†Seal Package, Reverse Piston	209379	1	1
	Consists of:			
	1 - Seal, Inner			
	1 - Seal, Outer			
	†Spring, Reverse Clutch Release	209366	1	1
	†Retainer	209367	1	1
9-9-4	#Bearing, Shaft	209146	1	1
9-9-3	#Snap Ring, 1/8" x 1-3/16"	209147	1	1
	†Bearing, Shaft	209380	1	1
	†Snap Ring, 1/16" x 1-1/16"	209381	1	1
	†Snap Ring, 1/16" x 2-9/32"	209382	1	1
	9.690 - HYDRA-MATIC SPEEDOMETER DRIVE GEAR AND PINION			
	#Gear	209148	1	1
	#Pinion and Sleeve (3.54 Axle Ratio)	209288	1	1
	†Pinion and Sleeve (3.54 Axle Ratio)	209383	1	1
	#Pinion and Sleeve (3.91 Axle Ratio - Export only)	209336	1	1
	†Pinion and Sleeve (3.91 Axle Ratio - Export only)	209384	1	1
	9.695 - HYDRA-MATIC REVERSE SHIFTER AND PARKING BRAKE			
9-11-6	#Bracket and Crank	209149	1	1
	Bolt, 5/16"-18 x 2 1/16" Hx.	898	2	2
	Lockwasher, 5/16" Med.	240	2	2
9-11-5	#Shim (to Case)	209150	*	*
9-11-8	#Piston, Blocker	209151	1	1
	†Piston, Blocker	209385	1	1
	†Spring, Blocker Piston	209386	1	1
	†Stop Pin, Blocker Piston	209387	1	1
9-11-7	Roller, Crank	209156	1	1
9-11-2	#Anchor, Reverse	209152	1	1
9-11-4	Bolt	209153	1	1
9-11-3	Lock	209154	1	1
9-11-1	#Spring, Reverse Anchor Retracting	209155	1	1
	†Bracket, Crank and Lever, Parking Brake	209388	1	1
	Bolt, 5/16"-18 x 2 1/16" Hx. Hd.	898	2	2
	Lockwasher, 5/16" Med.	240	2	2
	†Piston, Parking Blocker	209389	1	1

*As Required

#Parts Peculiar to Model K50 Transmission

†Parts Peculiar to Model K51 Transmission

TRANSMISSION (HYDRA-MATIC)

9

FIGURE NUMBER	GROUP, PART NAME and DESCRIPTION	PART NUMBER	USED PER CAR MODEL	
			511	512
	9.695 - HYDRA-MATIC REVERSE SHIFTER AND PARKING BRAKE (Cont'd)			
	†Spring, Parking Blocker Piston	209390	1	1
	†Stop, Parking Blocker Piston Release.	209391	1	1
	†Pawl, Parking Brake	209392	1	1
	†Bolt	209393	1	1
	†Lock	209154	1	1
	†Spring, Return	209394	1	1
	9.700 - HYDRA-MATIC REAR OIL PUMP			
9-10-2	Oil Pump Complete.	209157	1	1
	Bolt, 5/16"-18 x 7/8" Hx. Hd	209	2	2
	Lockwasher.	240	2	2
9-10-1	Cover	209158	1	1
	Bolt, 1/4"-20 x 5/8" Hx. Hd	884	4	4
9-10-3	Gear and Pin Package, Driven	209159	1	1
	Consists of:			
	1 - Gear, Driven			
	1 - Pin, Driven Gear, 3/16" x 7/8"			
	1 - Pin, Governor Flange, 3/16" x 1 1/4"			
	9.705 - HYDRA-MATIC GOVERNOR			
9-10-8	Governor Assembly	209343	1	1
	Bolt, 1/4"-20 x 1 1/8" Hex. Hd.	882	2	2
	Lockwasher, 1/4" Ext. Tooth	370	2	2
9-10-7	Ring, Oil Seal (3/32" x 1-3/16")	209163	4	4
9-10-5	#Sleeve, Oil Delivery	209164	1	1
9-10-4	#Plug, Oil Delivery Sleeve	209165	1	1
	Plunger and Bushing	209166	1	1
	Screw with L/W, No. 10-24 x 5/8" Fil. Hd. Sl	899	2	2
9-10-9	Stop, Plunger.	209161	1	1
9-10-10	Flange and Pin Package	209162	1	1
	Consists of:			
	1 - Flange, Governor			
	1 - Pin, Governor Flange, 3/16" x 1 1/4"			
	9.710 - HYDRA-MATIC OIL CONTROL VALVE			
9-11-9	#Control Valve Assembly.	209167	1	1
	†Control Valve Assembly.	209395	1	1
	Bolt, 1/4"-20 x 2" Hx. Hd.	880	4	4
	Lockwasher, 1/4" Ext. Tooth	370	4	4
	Screw with L/W, No. 10-24 x 1" Fil. Hd. Sl. (Front to Inner Body)	900	*	*
	Screw with L/W, No. 10-24 x 1 1/8" Fil. Hd. Sl. (Outer to Inner Body)	901	*	*
	Screw, No. 10-24 x 7/16" Fil. Hd. Cr. Rec.	900	1	1
	Lockwasher, No. 10	643	*	*
	Screw with L/W, No. 10-24 x 3/8" Fl. Hd. Sl.	254	*	*
	Screw with L/W, No. 10-24 x 3/4" Fil. Hd. Sl. (Rear Cover to Inner Body)	986	1	1
	Pin, Compensator Auxiliary Plug Stop	904	*	*
9-10-6	Pipe (to Governor Oil Delivery)	209225	1	1
		209172	3	3

*As Required #Parts Peculiar to Model K50 Transmission †Parts Peculiar to Model K51 Transmission

TRANSMISSION (HYDRA-MATIC)

FIGURE NUMBER	GROUP, PART NAME and DESCRIPTION	PART NUMBER	USED PER CAR MODEL	
			511	512
	9.710 - HYDRA-MATIC OIL CONTROL VALVE (Cont'd)			
	†Pipe, Reverse Clutch.	209400	1	1
	†Pipe, Pressure Regulator Reverse Oil	209401	1	1
	†Body, Front Servo Exhaust	209403	1	1
	Screw with L/W, No. 10-24 x 5/8" Fil. Hd. Sl	899	1	1
	Screw with L/W, No. 10-24 x 1" Fil. Hd. Sl.	900	1	1
	†Retainer, Reverse Detent Plunger	209404	1	1
	Screw with L/W, No. 10-24 x 1" Fil. Hd. Sl.	900	1	1
	Screw with L/W, No. 10-24 x 1 1/8" Fil. Hd. Sl.	901	1	1
	Screw with L/W, No. 10-24 x 5/8" Fil. Hd. Sl	899	1	1
	9.715 - HYDRA-MATIC OIL CONTROL VALVE - MANUAL			
9-11-10	#Valve, Manual Control	209168	1	1
	†Valve, Manual Control	209396	1	1
9-11-19	#Lever Assembly, Manual Detent	209169	1	1
	†Lever Assembly, Manual Detent	209397	1	1
	†Plunger, Detent	209398	1	1
	†Spring, Detent Plunger.	209399	1	1
9-11-12	#Ball, Manual Control Valve Detent (5/16" Dia.)	902	1	1
9-11-20	#Retainer	209170	1	1
	Screw with L/W, No. 10-24 x 5/8" Fil. Hd. Sl	899	2	2
	Screw with L/W, No. 10-24 x 7/8" Fil. Hd. Sl	903	1	1
9-11-13	#Spring, Detent Ball	209171	1	1
	9.720 - HYDRA-MATIC THROTTLE CONTROL			
9-11-11	Lever and Shaft, Inner.	209173	1	1
	Pin (Grooved 1/16" x 1/2")	905	1	1
	Pin, Seal and Washer Package, Inner Control Lever	209174	1	1
	Consists of:			
	1 - Pin, Manual Control Shaft, 1/16" x 1/2"			
	1 - Seal, Throttle Shaft			
	6 - Flatwasher, Throttle Shaft			
9-11-14	Seal and Washer Package, Inner Control Lever	209175	1	1
	Consists of:			
	1 - Washer, Manual Shaft Seal, Inner			
	1 - Washer, Manual Shaft Seal, Outer			
	1 - Seal, Manual Shaft			
9-11-17	Lever, Outer	209176	1	1
9-11-16	Bolt, 1/4"-28 x 1 1/4" Hx. Hd	634	1	1
	Lockwasher, 1/4" Ext. Tooth	370	1	1
	9.725 - HYDRA-MATIC OUTER SHIFT LEVER			
9-11-18	#Lever, Outer Shift	209177	1	1
	†Lever, Outer Shift	209402	1	1
9-11-15	Bolt, 5/16"-24 x 1" Hx. Hd	210	1	1
	9.730 - HYDRA-MATIC SPEEDOMETER CABLE			
	Cable and Housing	209289	1	1
	Core	209290	1	1

#Parts Peculiar to Model K50 Transmission †Parts Peculiar to Model K51 Transmission

TRANSMISSION (HYDRA-MATIC)

9

FIGURE NUMBER	GROUP, PART NAME and DESCRIPTION	PART NUMBER	USED PER CAR MODEL	
			511	512
9.735 - HYDRA-MATIC GEAR SHIFT LEVER				
9-12-8	Lever, Upper	209191	1	1
9-12-9	Pin, 5/16" x 15/16"	897	1	1
	Washer, Anti-Rattle	209197	1	1
9-12-10	Retainer	209194	1	1
9-12-21	Cover (Rubber)	209193	1	1
9-12-20	Spring	209195	1	1
9-12-19	Retainer	209196	1	1
9-12-7	Knob	209192	1	1
9.740 - HYDRA-MATIC GEAR SHIFT SHAFT				
9-12-18	Shaft (incl. Lever Housing and Cable)	209211	1	1
9.745 - HYDRA-MATIC GEAR SHIFT LEVER INDICATOR				
9-12-28	Indicator and Light	209208	1	1
9-12-27	Light and Shield	209209	1	1
	Screw, No. 8-32 x 1/4" Fil. Hd. Sl.	917	1	1
	Lockwasher	254	1	1
9-12-25	Cable (incl. Terminal)	209200	1	1
9-12-29	Bulb, 6-8V, 1 C. P., S. C.	201462	1	1
9-12-16	Link Block (incl. Pin)	209210	1	1
9-12-17	Screw with L/W, No. 8-32 x 7/16" Ov. Hd. Cr. Rec. (to Lever Housing) ..	209304	2	2
9.750 - HYDRA-MATIC GEAR SHIFT LEVER INDICATOR COVER AND LENS				
9-12-14	Cover and Lens	209201	1	1
9-12-15	Screw with L/W, No. 10-24 x 3/4" Fil. Hd. Cr. Rec	209306	2	2
	Lens, "N"	209202	1	1
	Lens, "DR"	209203	1	1
	Lens, "LO"	209204	1	1
	Lens, "R"	209205	1	1
	Retainer	209206	1	1
	Screen (Plastic Disc)	209207	4	4
9.755 - HYDRA-MATIC GEAR SHIFT BRACKET - UPPER				
9-12-11	Bracket	209198	1	1
9-12-6	Bolt, 1/4"-20 x 3/4" Fil. Hd. Cr. Rec	914	1	1
9-12-12	Plate	209199	1	1
9-12-13	Screw with L/W, No. 8-32 x 3/4" Rd. Hd. Cr. Rec	209305	2	2
9.760 - HYDRA-MATIC GEAR SHIFT BRACKET - LOWER				
9-12-46	Bracket	209215	1	1
9-12-40	"U" Bolt	209216	1	1
	Lockwasher, 1/4"	190	2	2
9-12-45	Nut, 1/4"-28 Hx.	261	2	2
9-12-44	Seal	209213	1	1
9-12-43	Washer, Seal	209214	2	2
9-12-39	Spring, Anti-Rattle	209212	1	1

TRANSMISSION (HYDRA-MATIC)

FIGURE NUMBER	GROUP, PART NAME and DESCRIPTION	PART NUMBER	USED PER CAR MODEL	
			511	512
	9.765 - HYDRA-MATIC GEAR SHIFT NEUTRALIZER SWITCH			
9-12-48	Switch	209217	1	1
9-12-47	Bolt, 5/16"-18 x 1/2" Hx. Hd.	322	1	1
	Lockwasher, 5/16" Ext. Tooth	348	1	1
	Screw, Terminal, No. 8-32 x 5/16" Fil. Hd. Sl.	161	1	1
	Lockwasher, No. 8 Ext. Tooth	447	1	1
9-12-49	Rod, Switch to Lever.	209221	1	1
	Washer	209259	2	2
	Cotter Pin, 1/16" Dia.	298	2	2
	9.770 - HYDRA-MATIC GEAR SHIFT LOWER LEVER			
9-12-41	Lever (incl. Bushing)	209218	1	1
9-12-55	Key	209219	1	1
9-12-42	Bolt, 5/16"-24 x 1 3/4" Hx. Hd.	184	1	1
	Locking Washer	209255	1	1
	Nut, 5/16"-24 Hx.	189	1	1
9-12-50	Bushing	209220	1	1
	9.775 - HYDRA-MATIC GEAR SHIFT LOWER LEVER TO TRANSMISSION ROD			
9-12-37	Rod	209260	1	1
9-12-54	Trunnion	209222	1	1
9-12-53	Jam Nut, 7/16"-20 Hx.	412	2	2
9-12-52	Springwasher.	209197	1	1
9-12-51	Washer	209223	1	1
	Cotter Pin, 3/32" Dia.	791	1	1
	Springwasher	209261	1	1
	Flatwasher, 3/8" Sm.	247	1	1
	Cotter Pin, 3/32" Dia.	791	1	1
	9.795 - HYDRA-MATIC THROTTLE CONTROL UPPER BELLCRANK			
9-12-3	Bellcrank	209270	1	1
9-12-2	Bolt, 1/4"-20 x 5/8" Hx. Hd.	257	1	1
	Lockwasher, 1/4" Ext. Tooth	370	1	1
	Flatwasher, 1/4"	243	1	1
	Lockwasher, 1/4"	190	1	1
	Nut, 1/4"-20 Hx.	203	1	1
	9.800 - HYDRA-MATIC THROTTLE CONTROL UPPER TO LOWER BELLCRANK ROD			
9-12-38	Rod	209272	1	1
9-12-34	Swivel	209273	1	1
9-12-5	Nut, 1/4"-28 Hx.	261	3	3
	Lockwasher, 1/4"	190	3	3
	9.805 - HYDRA-MATIC THROTTLE CONTROL LOWER BELLCRANK			
9-12-33	Bellcrank	209274	1	1
	Flatwasher, 5/16" Sm.	225	1	1

TRANSMISSION (HYDRA-MATIC)

9

FIGURE NUMBER	GROUP, PART NAME and DESCRIPTION	PART NUMBER	USED PER CAR MODEL	
			511	512
	9.805 - HYDRA-MATIC THROTTLE CONTROL LOWER BELLCRANK (Cont'd)			
	Cotter Pin, 3/32" Dia.	791	1	1
9-12-35	Bracket (incl. Pin)	209275	1	1
9-12-36	Bolt, 5/16"-18 x 3/4" Hx. Hd.	183	2	2
	Lockwasher, 5/16" Ext. Tooth	348	2	2
9-12-32	Spring, Pull Back.	209276	1	1
	9.810 - HYDRA-MATIC THROTTLE CONTROL LOWER BELLCRANK TO TRANSMISSION ROD			
9-12-31	Rod (incl. Pivot)	209277	1	1
	Nut, 1/4"-28 Hx.	261	1	1
	Lockwasher	190	1	1
	Trunnion	209278	1	1
	Nut, 5/16"-24 Hx.	189	2	2
	Springwasher	209279	1	1
	Flatwasher	209259	1	1
	Cotter Pin, 1/16" Dia.	298	1	1