

FIGURE 12-1 — TYPICAL REAR AXLE AND DIFFERENTIAL - EXPLODED VIEW

FIGURE 12-1 — TYPICAL REAR AXLE AND DIFFERENTIAL - EXPLODED VIEW

KEY	PART NAME	GROUP	KEY	PART NAME	GROUP
1	Plug, Grease Fitting	12.005	25	Nut, Shaft	12.080
2	Housing	12.005	26	Cotter Pin, Shaft	12.080
3	Locknut	11.004	27	Flatwasher, Shaft	12.080
4	Flatwasher	11.020	28	Bearing Cup, Shaft	12.080
5	Oil Seal, Pinion Bearing	12.050	29	Bearing Cone, Shaft	12.080
6	Gasket, Pinion Bearing Oil Seal	12.050	30	Shaft	12.080
7	Oil Slinger, Pinion Bearing	12.050	31	Gasket, Housing	12.005
8	Washer (Felt) Pinion Bearing	12.050	32	Cover Assembly	12.005
9	Bearing Cone, Pinion, Front	12.050	33	Filler Plug	12.005
10	Bearing Cup, Pinion, Front	12.050	34	Bolt, Cover	12.005
11	Oil Seal, Shaft Outer	12.080	35	Lockwasher, Cover	12.005
12	Gasket, Shaft Outer Oil Seal	12.080	36	Thrustwasher, Differential Side Gear	12.020
13	Retainer, Shaft Bearing	12.080	37	Thrust Block	12.020
14	Shim, Shaft Bearing Adjusting	12.080	38	Lockpin, Differential Side Pinion Shaft	12.020
15	Oil Seal, Shaft Inner	12.080	39	Shaft, Differential Side Pinion	12.020
16	Shim, Pinion Bearing	12.050	40	Thrustwasher, Differential Side Pinion	12.020
17	Drain Plug	12.005	41	Kit, Differential Gear and Pinion	12.020
18	Shim, Pinion Rear Bearing	12.060	42	Bearing Cup, Differential	12.035
19	Lockwasher, Differential Case	12.015	43	Bearing Cone, Differential	12.035
20	Bolt, Differential Case	12.015	44	Shim, Differential Bearing	12.035
21	Bearing Cup, Pinion, Rear	12.060	45	Lockplate, Gear and Pinion	12.045
22	Bearing Cone, Pinion, Rear	12.060	46	Bolt, Gear and Pinion	12.045
23	Gear and Pinion Set	12.045	47	Case, Differential	12.015
24	Key, Shaft	12.080			

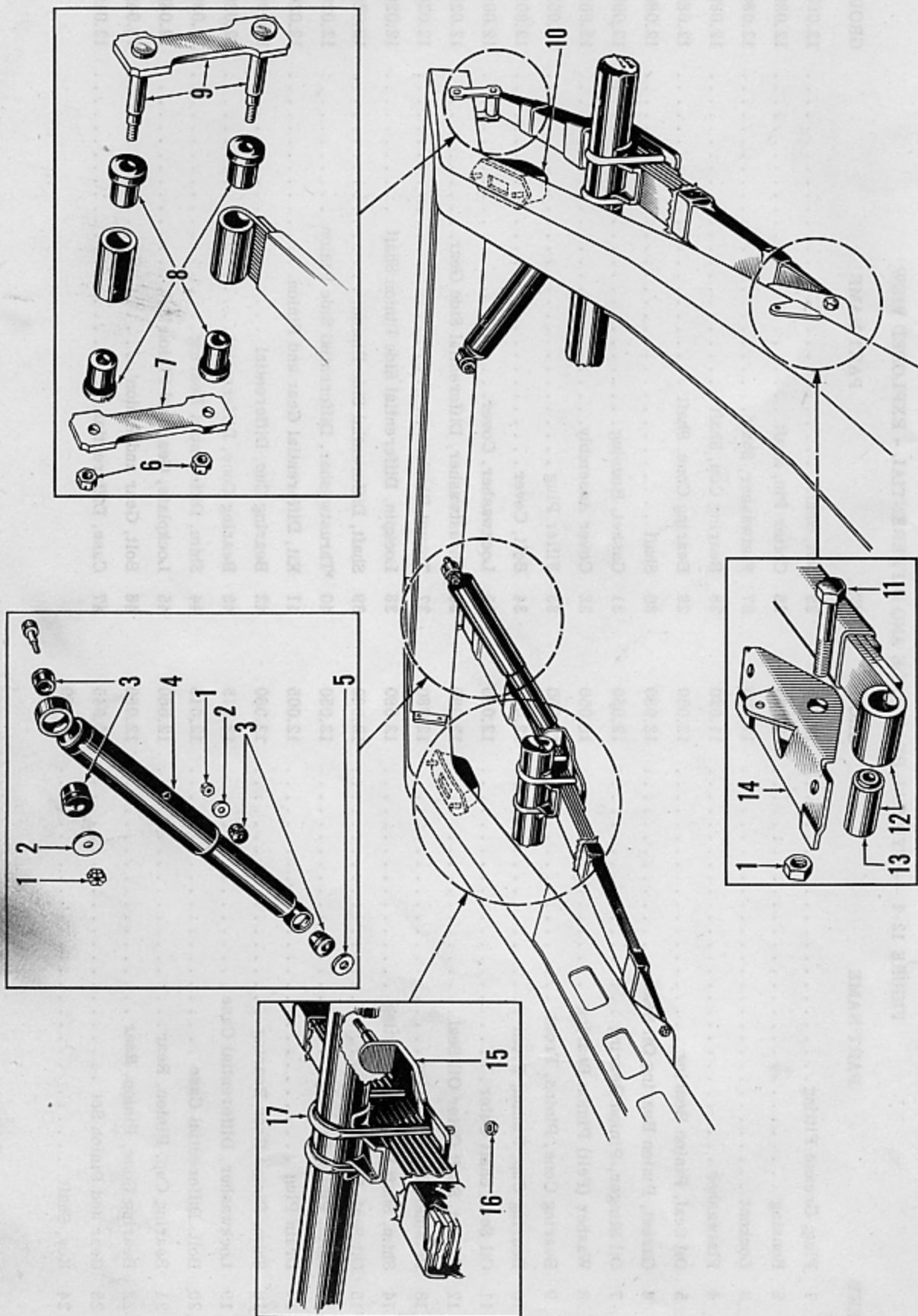


FIGURE 12-2 — TYPICAL REAR SUSPENSION - EXPLODED VIEW

FIGURE 12-2 — TYPICAL REAR SUSPENSION - EXPLODED VIEW

KEY	PART NAME	GROUP	KEY	PART NAME	GROUP
1	Locknut, Rear Shock Absorber	20.010	10	Bumper, Rear Spring (or Axle)	12.230
2	Flatwasher, Rear Shock Absorber, Inner	20.010	11	Bolt, Rear Spring Front	12.200
3	Bushing, Rear Shock Absorber	20.010	12	Spring Assembly, Rear	12.200
4	Shock Absorber, Rear	20.010	13	Bushing, Rear Spring Front Hanger	12.200
5	Flatwasher, Rear Shock Absorber, Outer	20.010	14	Hanger, Rear Spring Front	12.200
6	Locknut, Rear Spring Shackle	12.220	15	Plate, Rear Spring Mounting, Right	12.215
7	Link (serviced only in Shackle and Link Kit)	12.220	16	Nut, Rear Spring "U" Bolt	12.215
8	Bushing, Rear Spring Shackle	12.220	17	"U" Bolt	12.215
9	Shackle (serviced only in Shackle and Link Kit)	12.220			

FIGURE NUMBER	GROUP, PART NAME and DESCRIPTION	PART NUMBER	USED PER CAR MODEL	
			511	512
	12.000 - REAR AXLE			
	NOTE: Rear Axles as listed are less Brakes and Back Plate.			
	Rear Axle, 4.09 Ratio	212745	1	1
	#Rear Axle, 3.91 Ratio	212746	1	1
	Rear Axle, 4.27 Ratio	212747	1	1
	Rear Axle, 4.55 Ratio	212748	1	1
	Rear Axle, 3.54 Ratio (with Hydra-Matic)	208022	1	1
	12.005 - REAR AXLE HOUSING			
	Housing	208023	1	1
	Cover, with Plug	200369	1	1
	Bolt, 3/8"-16 x 5/8" Hx. Hd.	200370	10	10
	Lockwasher, 3/8" Med	192	10	10
	Gasket	200371	1	1
12-1-2	Housing	209309	1	1
12-1-32	Cover, with Plug	209311	1	1
12-1-34	Bolt	209312	10	10
12-1-35	Lockwasher, 5/16" Hy.	191	10	10
12-1-31	Gasket	209313	1	1
12-1-17	Plug, Drain, 3/4"-14 Hd'ls. Ct'sk	339	1	1
12-1-33	Plug, Filler	338	1	1
12-1-1	Plug, Grease Fitting	527	2	2
	12.015 - REAR AXLE DIFFERENTIAL CASE			
	Case (3.91, 4.09, 4.27 Ratio Axles only)	200388	1	1
	Case (4.55 Ratio Axle only)	205654	1	1
	Case (3.54 Ratio Axle only)	209314	1	1
12-1-47	Case (3.54 Ratio Axle only)	209315	1	1
12-1-47	Case (except 3.54 Ratio Axle)	212843	1	1
12-1-20	Bolt, 1/2"-13 x 2 1/4" Hx. Hd	200396	4	4
12-1-19	Lockwasher, 1/2" Int. Tooth	528	4	4
	12.020 - REAR AXLE DIFFERENTIAL GEAR AND PINION KIT			
12-1-41	Gear and Pinion Kit	202052	1	1
12-1-36	Thrustwasher, Side Gear	200399	2	2
12-1-40	Thrustwasher, Side Pinion	200401	2	2
12-1-39	Shaft, Side Pinion	200402	2	2
12-1-38	Lockpin	200403	1	1
12-1-37	Thrustblock	200377	1	1
	12.035 - REAR AXLE DIFFERENTIAL BEARING			
12-1-43	Bearing Cone	200390	2	2
12-1-42	Bearing Cup	200389	2	2
12-1-44	Shim, .003	200391	*	*
12-1-44	Shim, .005	200392	*	*
12-1-44	Shim, .010	200393	*	*
12-1-44	Shim, .030	200394	*	*

*As Required #Used with Hydra-Matic on some Export Cars.

REAR AXLE AND SUSPENSION

12

FIGURE NUMBER	GROUP, PART NAME and DESCRIPTION	PART NUMBER	USED PER CAR MODEL	
			511	512
			12.045 - REAR AXLE GEAR AND PINION	
	Gear and Pinion, 3.91 Ratio (51/13)	208692	1	1
	Gear and Pinion, 4.09 Ratio (45/11)	202089	1	1
	Gear and Pinion, 4.27 Ratio (47/11)	200404	1	1
	Gear and Pinion, 4.55 Ratio (50/11)	205655	1	1
	Bolt	200405	10	10
	Lockplate	200406	5	5
	Gear and Pinion, 3.54 Ratio (46/13)	209316	1	1
	Bolt	209317	10	10
12-1-23	Gear and Pinion, 3.91 Ratio (47/12)	212844	1	1
12-1-23	Gear and Pinion, 4.09 Ratio (45/11)	212845	1	1
12-1-23	Gear and Pinion, 4.27 Ratio (47/11)	212846	1	1
12-1-23	Gear and Pinion, 4.55 Ratio (41/9)	212847	1	1
12-1-23	Gear and Pinion, 3.54 Ratio (46/13)	209318	1	1
12-1-46	Bolt	209319	10	10
12-1-45	Lockplate	209320	5	5
12.050 - REAR AXLE PINION BEARING - FRONT				
12-1-9	Bearing Cone	200418	1	1
12-1-10	Bearing Cup	200417	1	1
12-1-16	Shim, .003	200413	*	*
12-1-16	Shim, .005	200414	*	*
12-1-16	Shim, .010	200415	*	*
12-1-16	Shim, .030	200416	*	*
	Slinger (for Axles with Oval Shaped Cover)	200419	1	1
12-1-7	Slinger (for Axles with Hexagon Shaped Cover)	209321	1	1
12-1-6	Gasket	200421	1	1
12-1-5	Oil Seal	200420	1	1
12-1-8	Washer (Felt) (for Axles with Hexagon Shaped Cover)	209322	1	1
	Spacer (for Axles with Oval Shaped Cover)	200412	1	1
12.060 - REAR AXLE PINION BEARING - REAR				
12-1-22	Bearing Cone	200411	1	1
12-1-21	Bearing Cup	200410	1	1
12-1-18	Shim, .003	200407	*	*
12-1-18	Shim, .005	200408	*	*
12-1-18	Shim, .010	200409	*	*
12.080 - REAR AXLE SHAFT				
12-1-30	Shaft (30 45/64" Long, with 7/8"-14 Thd.)	207237	2	2
12-1-24	Key (2 3/8" Long x 7/32" x 7/32")	207238	2	2
12-1-27	Flatwasher (.906 I. D. x 1 9/16" O. D.)	207239	2	2
12-1-25	Nut, 7/8"-14 Hx. (1 5/16" Across Flats)	207240	2	2
12-1-26	Cotter Pin, 1/8" Dia.	496	2	2
12-1-15	Oil Seal, Inner	200378	2	2
12-1-37	Thrustblock	200377	1	1
12-1-29	Bearing Cone	200380	2	2
12-1-28	Bearing Cup	200379	2	2
12-1-14	Shim, .003	200381	*	*
12-1-14	Shim, .005	200382	*	*

*As Required

REAR AXLE AND SUSPENSION

FIGURE NUMBER	GROUP, PART NAME and DESCRIPTION	PART NUMBER	USED PER CAR MODEL	
			511	512
			12.080 - REAR AXLE SHAFT (Cont'd)	
12-1-14	Shim, .010	200383	*	*
12-1-14	Shim, .030	200384	*	*
12-1-13	Retainer, Bearing	200385	2	2
12-1-12	Gasket, Bearing Retainer.	200435	2	2
12-1-11	Oil Seal, Outer.	207241	2	2
	Bolt, 3/8"-24 x 1 1/4" Hx. Hd	200387	12	12
	Lockwasher, 3/8" Hy	340	12	12
	Nut	188	12	12
12-1-12	Gasket, Oil Seal, Outer	200435	2	2
12.200 - REAR SPRINGS (INCL. BUSHINGS)				
12-2-12	Spring (6 Leaf) (Brown) †(except Utility)	208083	2	2
12-2-12	Spring (6 Leaf) (Blue) †(Heavy Duty Export) (except Utility)	208642	2	2
	Spring (7 Leaf) (Yellow) †(Utility only)	208085	2	2
12-2-11	Bolt, 7/16"-20 x 3 1/4" Hx.Hd	866	2	2
12-2-1	Locknut, 7/16"-20 Hx.	658	2	2
12-2-13	Bushing, Front	208086	2	2
12-2-14	Hanger, Front	208367	2	2
12.215 - REAR SPRING MOUNTING PLATE (TO AXLE)				
12-2-15	Plate, Right	208643	1	1
	Plate, Left	208644	1	1
12-2-17	"U" Bolt	208645	4	4
12-2-16	Locknut, 1/2"-20 Hx.	223	4	4
	Insulator.	208664	4	4
	Pin, Shock Absorber Lower Anchor	208665	2	2
	Locknut, 1/2"-20 Hx.	223	2	2
12.220 - REAR SPRING SHACKLE				
	Shackle and Link Kit	208621	2	2
	Consists of:			
	1 - # Shackle			
	1 - # Link			
	4 - 208088 Bushing (Rubber)			
	2 - 200432 Locknut			
12-2-6	Locknut	200432	4	4
12-2-8	Bushing	208088	8	8
12.230 - REAR SPRING (OR AXLE) BUMPER				
12-2-10	Bumper	208089	2	2
	Bolt, 5/16"-18 x 5/8" Hx. Hd. Tap.	867	4	4

*As Required †Paint Daub on Side of Spring #Not Sold Separately

NOTES