

FIGURE 15-1 — TYPICAL REAR WHEEL BRAKE - EXPLODED VIEW

KEY	PART NAME	GROUP
1	Cylinder	15.012
2	Spring, Pull Back, Cylinder End	15.004
3	Link, Hand Brake Operating Lever	15.008
4	Lever, Hand Brake Operating	15.008
5	Spring, Pull Back, Anchor End	15.004
6	Lining (sold in sets)	15.006
7	Clip, Shoe Hold Down	15.004
8	Cam, Shoe Adjusting	15.002
9	Plate	15.002
10	Lockwasher	15.002
11	Nut, Adjusting Cam	15.002
12	Bolt with L/W	15.012
13	Retainer, Hand Brake	15.008
14	Springwasher	15.008
15	Shoe (sold in sets)	15.004

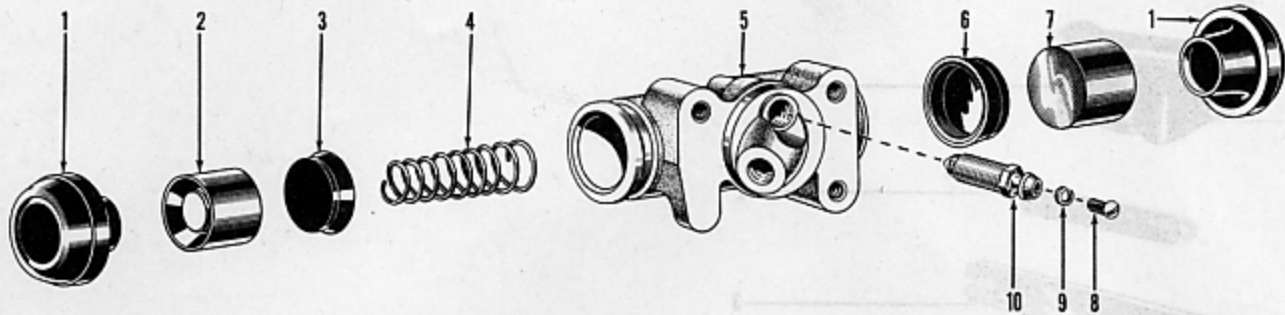


FIGURE 15-2 — TYPICAL FRONT WHEEL BRAKE CYLINDER - EXPLODED VIEW

KEY	PART NAME	GROUP
1	Boot	15.020
2	Piston, Rear	15.020
3	Cup, Rear	15.020
4	Spring, Return	15.020
5	Body	15.016
6	Cup, Front	15.020
7	Piston, Front	15.020
8	Screw	15.016
9	Lockwasher	15.016
10	Bleeder Valve	15.016

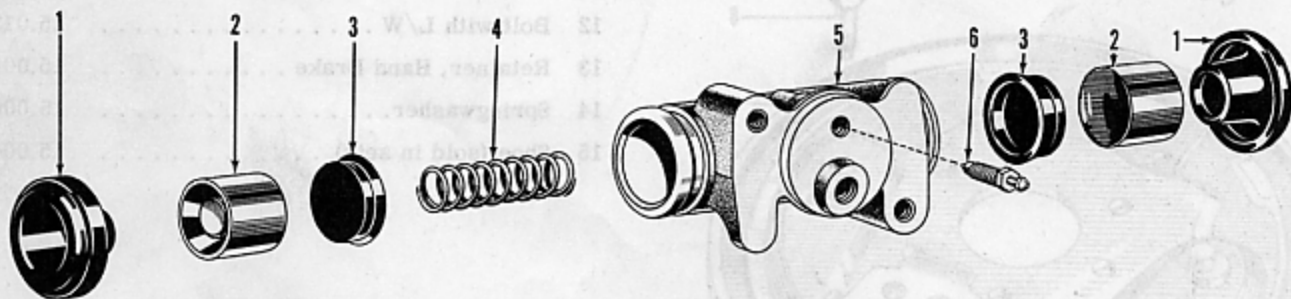


FIGURE 15-3 — TYPICAL REAR WHEEL BRAKE CYLINDER - EXPLODED VIEW

KEY	PART NAME	GROUP
1	Boot	15.030
2	Piston	15.030
3	Cup	15.030
4	Spring, Return	15.030
5	Body	15.018
6	Bleeder Valve	15.018

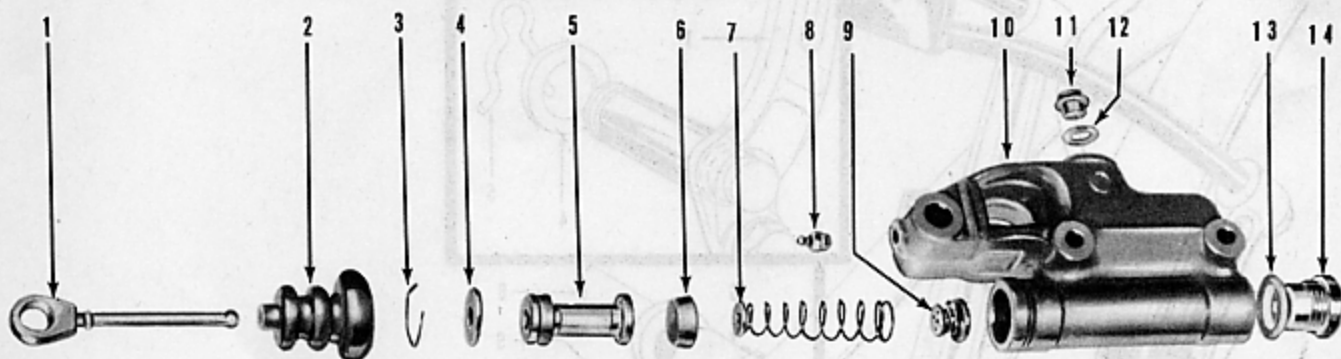


FIGURE 15-4 — TYPICAL MASTER BRAKE CYLINDER - EXPLODED VIEW

KEY	PART NAME	GROUP
1	Push Rod, Piston	15.035
2	Boot	15.035
3	Retainer	15.035
4	Plate, Piston Stop	15.035
5	Piston	15.035
6	Cup, Piston	15.035
7	Spring	15.035
8	Oiler	15.035
9	Valve, Check	15.035
10	Body (not serviced separately)	
11	Plug, Filler Hole	15.035
12	Gasket, Filler Hole Plug	15.035
13	Gasket, Adapter (to Cylinder)	15.035
14	Adapter, Outlet Fitting	15.035

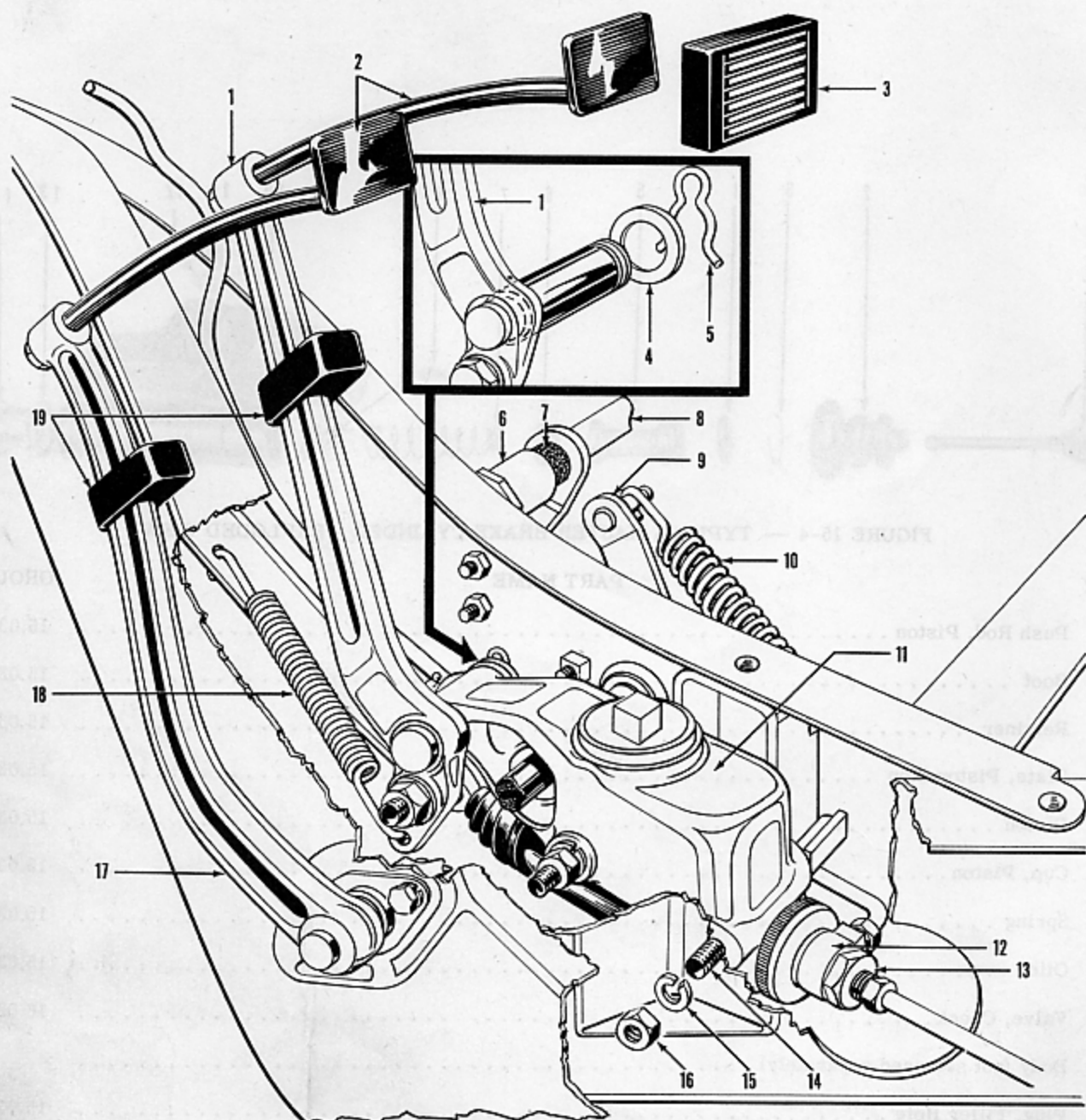


FIGURE 15-5 — TYPICAL BRAKE LINKAGE - EXPLODED VIEW

KEY	PART NAME	GROUP	KEY	PART NAME	GROUP
1	Arm and Shaft, Brake Pedal	15.102	11	Cylinder, Brake Master	15.035
2	Pedal, Clutch and Brake	15.102	12	Fitting, Master Cylinder	15.035
3	Pad, Pedal	15.102	13	Bolt, Master Cylinder Fitting	15.035
4	Washer, Arm and Shaft	15.102	14	Bolt, Master Cylinder (to Frame)	15.035
5	Retainer, Arm and Shaft	15.102	15	Lockwasher, Master Cylinder (to Frame)	15.035
6	Support, Clutch Pedal Cross Shaft	8.155	16	Nut, Master Cylinder (to Frame)	15.035
7	Dust Seal, Clutch Pedal Cross Shaft	8.155	17	Shaft and Arm, Clutch Pedal	8.145
8	Shaft Assembly, Clutch Pedal Cross	8.155	18	Spring, Brake Pedal Return	15.102
9	Lever Assembly, Clutch Pedal Shaft	8.145	19	Bumper, Arm and Shaft	15.102
10	Spring, Clutch Pedal Return	8.140			

BRAKES and CONTROLS

15

FIGURE NUMBER	GROUP, PART NAME and DESCRIPTION	PART NUMBER	USED PER CAR MODEL	
			511	512
			<p>15.000 - BRAKE SUPPORT PLATE - FRONT</p> <p>Plate, Right (incl. Adjusting Cams) 200176 1 1</p> <p>Plate, Left (incl. Adjusting Cams) 200177 1 1</p> <p>Bolt, 3/8"-24 x 7/8" Hx. Hd. 201042 8 8</p> <p>Lockwasher, 3/8" Med. 192 8 8</p> <p>Nut, 3/8"-24 Hx. 188 8 8</p> <p>Adjusting Cam, Shoe 203284 4 4</p> <p>Lockwasher, 3/8" Med. 192 4 4</p> <p>Nut, 3/8"-24 Hx. 203285 4 4</p> <p>15.002 - BRAKE SUPPORT PLATE - REAR</p> <p>15-1-9 Plate, Right (incl. Adjusting Cams) 208467 1 1</p> <p>15-1-9 Plate, Left (incl. Adjusting Cams) 208468 1 1</p> <p>Bolt, 3/8"-24 x 1 1/4" Hx. Hd. 200387 12 12</p> <p>Lockwasher, 3/8" Hy. 340 12 12</p> <p>15-1-8 Adjusting Cam, Shoe 203284 8 8</p> <p>15-1-10 Lockwasher, 3/8" Med. 192 4 4</p> <p>15-1-11 Nut, 3/8"-24 Hx. 203285 4 4</p> <p>15.004 - BRAKE SHOES</p> <p>15-1-15 Shoe Set, Std. (incl. 4 Shoes and Linings) 200180 2 2</p> <p>15-1-15 Shoe Set, .030 Oversize (incl. 4 Shoes and Linings) 203090 * *</p> <p>15-1-7 Clip (Hold Down) 200187 8 8</p> <p>15-1-2 Spring, Pull Back (Cylinder End) 200188 4 4</p> <p>15-1-5 Spring, Pull Back (Anchor End) 200189 4 4</p> <p>15.006 - BRAKE LINING SET</p> <p>15-1-6 Lining Set, Std. (incl. Rivets) 200181 2 2</p> <p>15-1-6 Lining Set, .030 Oversize (incl. Rivets) 203091 * *</p> <p>15.008 - HAND BRAKE OPERATING LEVER (IN REAR BRAKE)</p> <p>15-1-4 Lever, Right 200190 1 1</p> <p>15-1-4 Lever, Left 200191 1 1</p> <p>15-1-13 Retainer 200192 2 2</p> <p>15-1-14 Springwasher 200193 2 2</p> <p>15-1-3 Link 200194 2 2</p> <p>15.010 - BRAKE CYLINDER - FRONT</p> <p>15-1-1 Cylinder, Right 200197 1 1</p> <p>15-1-1 Cylinder, Left 200198 1 1</p> <p>15-1-12 Bolt with L/W, 5/16"-18 x 7/16" Hx. Hd. 200196 4 4</p> <p>15.012 - BRAKE CYLINDER - REAR</p> <p>Cylinder 200199 2 2</p> <p>Bolt with L/W, 5/16"-18 x 7/16" Hx. Hd. 200196 4 4</p>	

* As Required

FIGURE NUMBER	GROUP, PART NAME and DESCRIPTION	PART NUMBER	USED PER CAR MODEL	
			511	512
	15.014 - BRAKE CYLINDER REPAIR KIT			
	Repair Kit, Front.....	201044	*	*
	Repair Kit, Rear.....	201043	*	*
	15.016 - BRAKE CYLINDER BODY - FRONT WHEEL			
15-2-5	Body, Right.....	201045	1	1
15-2-5	Body, Left.....	201046	1	1
15-2-10	Bleeder Valve.....	201616	2	2
15-2-8	Screw, No. 10-32 x 1/4" Rd. Hd. Sl.	334	2	2
15-2-9	Lockwasher, No. 10 Med.	254	2	2
	15.018 - BRAKE CYLINDER BODY - REAR WHEEL			
15-3-5	Body.....	201047	2	2
15-3-6	Bleeder Valve.....	201048	2	2
	15.020 - BRAKE CYLINDER PISTON - FRONT WHEEL			
15-2-7	Piston, Front.....	201050	2	2
15-2-2	Piston, Rear.....	201049	2	2
15-2-6	Cup, Front.....	201052	2	2
15-2-3	Cup, Rear.....	201051	2	2
15-2-4	Spring, Return.....	201054	2	2
15-2-1	Boot.....	201617	4	4
	15.030 - BRAKE CYLINDER PISTON - REAR WHEEL			
15-3-2	Piston.....	201049	4	4
15-3-3	Cup.....	201051	4	4
15-3-4	Spring, Return.....	201055	2	2
15-3-1	Boot.....	201053	4	4
	15.035 - MASTER BRAKE CYLINDER			
15-5-11	Cylinder (less Fitting).....	208469	1	1
15-5-14	Bolt, 3/8"-24 x 4 1/2" Hx. Hd.	886	2	2
15-5-15	Lockwasher, 3/8" Med.	192	2	2
15-5-16	Nut, 3/8"-24 Hx. Lt.	188	2	2
15-4-14	Adapter, Outlet Fitting.....	208470	1	1
15-4-13	Gasket (to Cylinder).....	208471	1	1
15-5-12	Fitting, Outlet.....	208472	1	1
	Gasket (to Adapter).....	201059	1	1
15-5-13	Bolt (Fitting to Adapter).....	208690	1	1
	Gasket (to Fitting).....	201060	1	1
15-4-11	Plug, Filler Hole.....	208473	1	1
15-4-12	Gasket.....	201621	1	1
15-4-9	Valve, Check.....	201622	1	1
15-4-5	Piston.....	208474	1	1
15-4-6	Cup, Piston.....	201624	1	1
15-4-7	Spring.....	208475	1	1
15-4-4	Plate, Piston Stop.....	201626	1	1
15-4-3	Retainer.....	201627	1	1

* As Required

BRAKES and CONTROLS

15

FIGURE NUMBER	GROUP, PART NAME and DESCRIPTION	PART NUMBER	USED PER CAR MODEL	
			511	512
	15.035 - MASTER BRAKE CYLINDER (Cont'd)			
15-4-1	Rod, Piston Push	208476	1	1
	Bolt (Eccentric)	208477	1	1
	Lockwasher, 3/8" Med.	192	1	1
	Nut, 3/8"-24 Hx. Lt.	188	1	1
15-4-2	Boot	208478	1	1
15-4-8	Oiler (Straight) 1/8" Taper Pipe Thd. x 3/4" Long.	202120	1	1
	15.036 - MASTER BRAKE CYLINDER ACCESS COVER (IN FLOOR PAN)			
	Cover	204109	1	1
	Gasket	204110	1	1
	Screw, No. 10-12 x 3/8" Rd. Hd. Cr. Rec. Tap.	609	4	4
	15.040 - MASTER BRAKE CYLINDER REPAIR KIT AND FLUID			
	Repair Kit	208486	1	1
	Hydraulic Brake Fluid (12 oz.)	202154	*	*
	Hydraulic Brake Fluid (Qt.)	202152	*	*
	Hydraulic Brake Fluid (Gal.)	202153	*	*
	Hydraulic Brake Fluid (5 Gal.)	202155	*	*
	15.060 - MASTER BRAKE CYLINDER TUBE (CYLINDER TO FRAME TEE)			
	Tube (incl. Nuts)	208479	1	1
	Clip (to Frame)	208519	1	1
	Nut, 3/8"-24 Hx. x 3/16" Inv. Fl. Tube	202142	2	2
	15.062 - MASTER BRAKE CYLINDER FRAME TEE			
	Tee	208480	1	1
	Bolt, 5/16"-12 x 5/8" Hx. Hd. Tap.	284	1	1
	15.064 - FRONT BRAKE TUBE			
	Tube, Right (incl. Nuts) (Frame Tee to Front Brake Hose).	208481	1	1
	Tube, Left (incl. Nuts) (Frame Tee to Front Brake Hose).	208482	1	1
	Nut, 3/8"-24 x 3/16" Inv. Fl. Tube	202142	2	2
	Clip (Tee to Right Front Brake Tube).	208519	2	2
	15.068 - FRONT BRAKE HOSE			
	Hose	201086	2	2
	Clip, Spring.	201071	2	2
	Gasket	201087	2	2
	15.070 - REAR BRAKE TUBE (MASTER CYLINDER TO REAR HOSE)			
	Tube (incl. Nuts)	208483	1	1
	Clip (to Frame)	208519	3	3
	Nut, 3/8"-24 Hx. x 3/16" Inv. Fl. Tube	202142	2	2
	15.074 - REAR BRAKE HOSE (BRAKE TUBE TO AXLE TEE)			
	Hose	201089	1	1

* As Required

BRAKES and CONTROLS

FIGURE NUMBER	GROUP, PART NAME and DESCRIPTION	PART NUMBER	USED PER CAR MODEL	
			511	512
			15.074 - REAR BRAKE HOSE (BRAKE TUBE TO AXLE TEE) (Cont'd)	
	Clip, Spring.	201071	1	1
	Gasket	201087	1	1
	15.076 - REAR AXLE BRAKE TUBE TEE			
	Tee	201091	1	1
	Bolt, 1/4"-28 x 7/8" Hx. Hd.	303	1	1
	Lockwasher, 1/4" Lt.	410	1	1
	15.078 - REAR AXLE BRAKE TUBE (AXLE TEE TO WHEEL CYLINDER)			
	Tube, Right (incl. Nuts)	206381	1	1
	Tube, Left (incl. Nuts)	206382	1	1
	Clip	201842	*	*
	Stud, 3/8"-24 x 3/8"-16 x 1 1/4" Long.	201095	2	2
	Nut, 3/8"-24 Hx.	188	2	2
	Bolt, 3/8"-16 x 5/8" Hx. Hd.	411	1	1
	Lockwasher, 3/8" Int. Tooth.	201	5	5
	Nut, 3/8"-24 Hx. x 3/16" Inv. Fl. Tube	202142	4	4
	15.102 - BRAKE PEDAL AND ARM			
15-5-1	Arm and Shaft	208484	1	1
15-5-4	Washer	206120	1	1
15-5-5	Retainer (Hair Pin Spring)	202138	1	1
15-5-19	Bumper	207932	1	1
15-5-18	Spring, Return (Frame to Arm and Shaft)	208485	1	1
15-5-2	Pedal	207929	1	1
	Locknut, 3/8"-24 Hx.	202257	1	1
15-5-3	Pad	204232	1	1
	Dust Seal	207931	1	1
	15.200 - HAND BRAKE HANDLE			
19-1-19	Handle Complete	208487	1	1
	Bolt, 1/4"-28 x 1/2" Hx. Hd.	276	2	2
	Lockwasher, 1/4" Int. Tooth	275	2	2
	Bolt, 5/16"-24 x 5/8" Hx. Hd.	274	2	2
	Lockwasher, 5/16" Med.	240	2	2
	Nut, 5/16"-24 Lt.	189	2	2
	Grommet (thru Dash Insulating Pad).	208488	1	1
	Washer (Rubber).	209787	1	1
	Pin, Stop.	212887	1	1
	15.218 - HAND BRAKE FRONT CABLE			
	Cable (less Hydra-Matic).	208489	1	1
	Cable (with Hydra-Matic).	208492	1	1
	Bracket (to Steering Gear Housing)	208639	1	1
	Clip.	208624	1	1
	Bolt, 1/4"-28 x 1/2" Hx. Hd.	276	1	1
	Lockwasher, 1/4" Int. Tooth	275	1	1

* As Required

BRAKES and CONTROLS

FIGURE NUMBER	GROUP, PART NAME and DESCRIPTION	PART NUMBER	USED PER CAR MODEL	
			511	512
			15.218 - HAND BRAKE FRONT CABLE (Cont'd)	
	Nut, 1/4"-28 Hx.	261	1	1
	Clip (to Handle)	208490	1	1
	Clip (to Frame)	208491	1	1
	Bracket	209332	1	1
	Bolt, 5/16"-24 x 3/4" Hx. Hd.	224	2	2
	Lockwasher, 5/16" Int. Ext. Tooth	226	2	2
	Nut, 5/16"-24 Hx.	189	2	2
15.222 - HAND BRAKE FRONT CABLE CLEVIS (TO REAR CABLE LEVER)				
	Clevis	201844	1	1
	Clevis Pin	416	1	1
	Cotter Pin, 3/32" Dia.	791	1	1
	Locknut, 5/16"-24 Hx. Lt.	189	1	1
15.230 - HAND BRAKE EQUALIZING LEVER				
	Lever	208494	1	1
	Spring, Retaining	208495	1	1
	Spring, Return	208496	1	1
	Rod (to Rear Cable)	208497	1	1
	Locknut, 5/16"-24 Hx. Lt.	189	2	2
15.236 - HAND BRAKE CABLE - REAR				
	Cable (incl. Guides)	208498	1	1
	Retainer	208499	2	2
	Guide	208500	2	2
	Bolt, 5/16"-18 x 5/8" Hx. Hd. Tap.	867	2	2