

FIGURE 1-1—EXTERIOR VIEW OF ENGINE—RIGHT SIDE—4 CYLINDER

KEY	PART NAME	GROUP	KEY	PART NAME	GROUP
1	Air Cleaner . . . . .	4.000	12	Cover, Timing Hole . . . . .	1.370
2	Fan. . . . .	6.000	13	Housing, Clutch. . . . .	8.130
3	Generator . . . . .	7.400	14	Transmission, Standard . . . . .	9.000
4	Cover Assembly, Timing Chain . . . . .	1.610	15	Starting Motor . . . . .	7.222
5	Pulley and Hub, Fan. . . . .	6.000	16	Solenoid, Starting Motor . . . . .	7.265
6	Belt, Fan. . . . .	6.000	17	Chamber, Vacuum (Spark Advance). . . . .	7.334
7	Plate, Engine Front End. . . . .	1.105	18	Distributor. . . . .	7.300
8	Bracket, Generator Mounting. . . . .	7.465	19	Coil, Ignition . . . . .	7.346
9	Pan Assembly, Oil. . . . .	2.400	20	Tube, Oil Filler . . . . .	2.412
10	Plate, Engine Rear End . . . . .	1.110	21	Carburetor. . . . .	3.690
11	Support, Starting Motor . . . . .	7.222	22	Elbow, Cylinder Head Water Outlet. . . . .	6.425

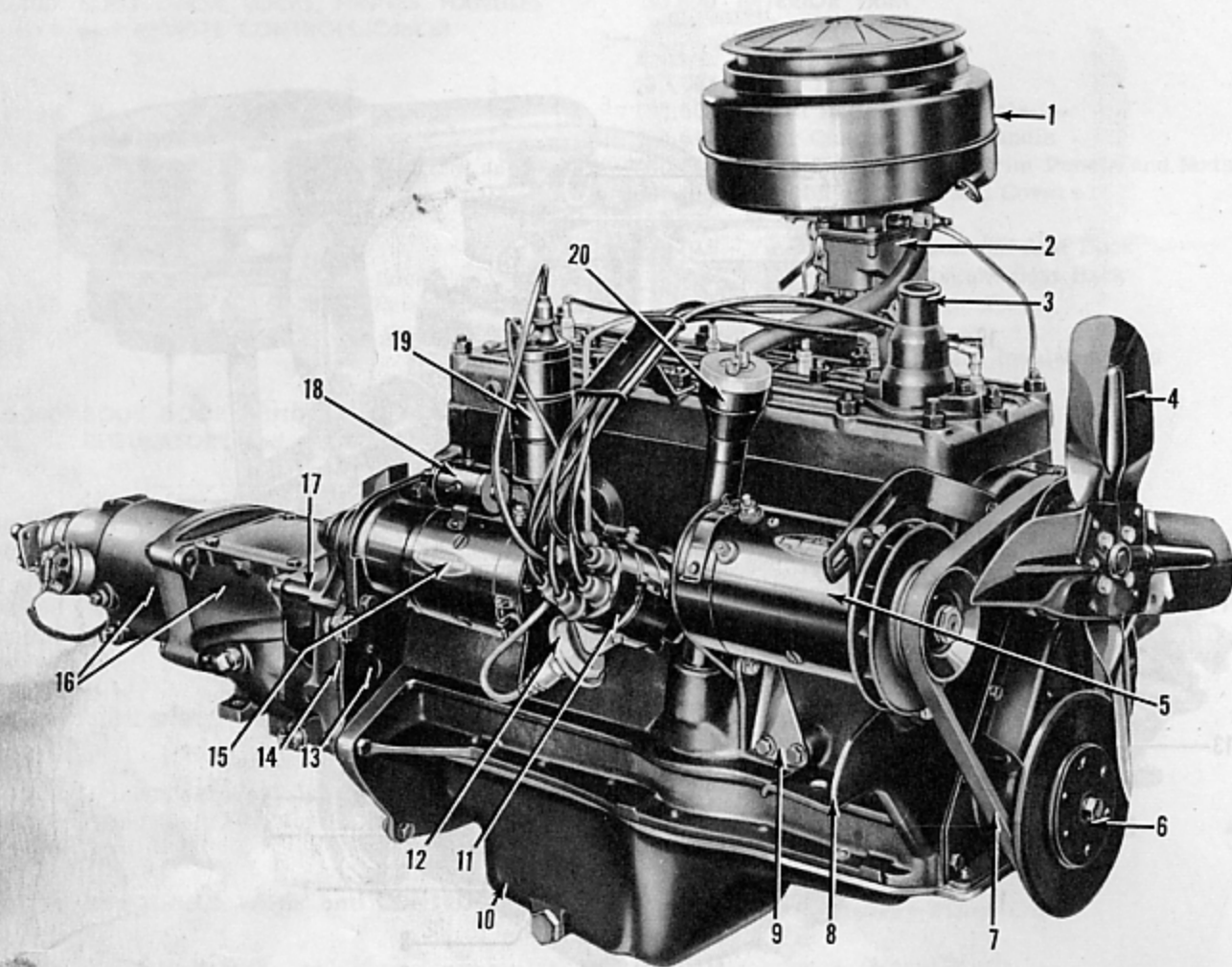


FIGURE 1-2—EXTERIOR VIEW OF ENGINE—RIGHT SIDE—6 CYLINDER

KEY	PART NAME	GROUP	KEY	PART NAME	GROUP
1	Air Cleaner . . . . .	4.000	11	Distributor. . . . .	7.300
2	Carburetor. . . . .	3.690	12	Chamber, Vacuum (Spark Advance). . . . .	7.334
3	Elbow, Cylinder Head Water Outlet. . . . .	6.425	13	Cover, Timing Hole . . . . .	1.370
4	Fan. . . . .	6.000	14	Plate, Engine Rear End . . . . .	1.110
5	Generator . . . . .	7.400	15	Starting Motor . . . . .	7.222
6	Damper, Crankshaft Vibration. . . . .	1.330	16	Transmission, Overdrive . . . . .	9.000
7	Belt, Fan . . . . .	6.000	17	Housing, Clutch. . . . .	8.130
8	Plate, Engine Front End. . . . .	1.105	18	Solenoid, Starting Motor . . . . .	7.265
9	Bracket, Generator Mounting. . . . .	7.465	19	Coil, Ignition . . . . .	7.346
10	Pan Assembly, Oil. . . . .	2.400	20	Tube, Oil Filler . . . . .	2.412

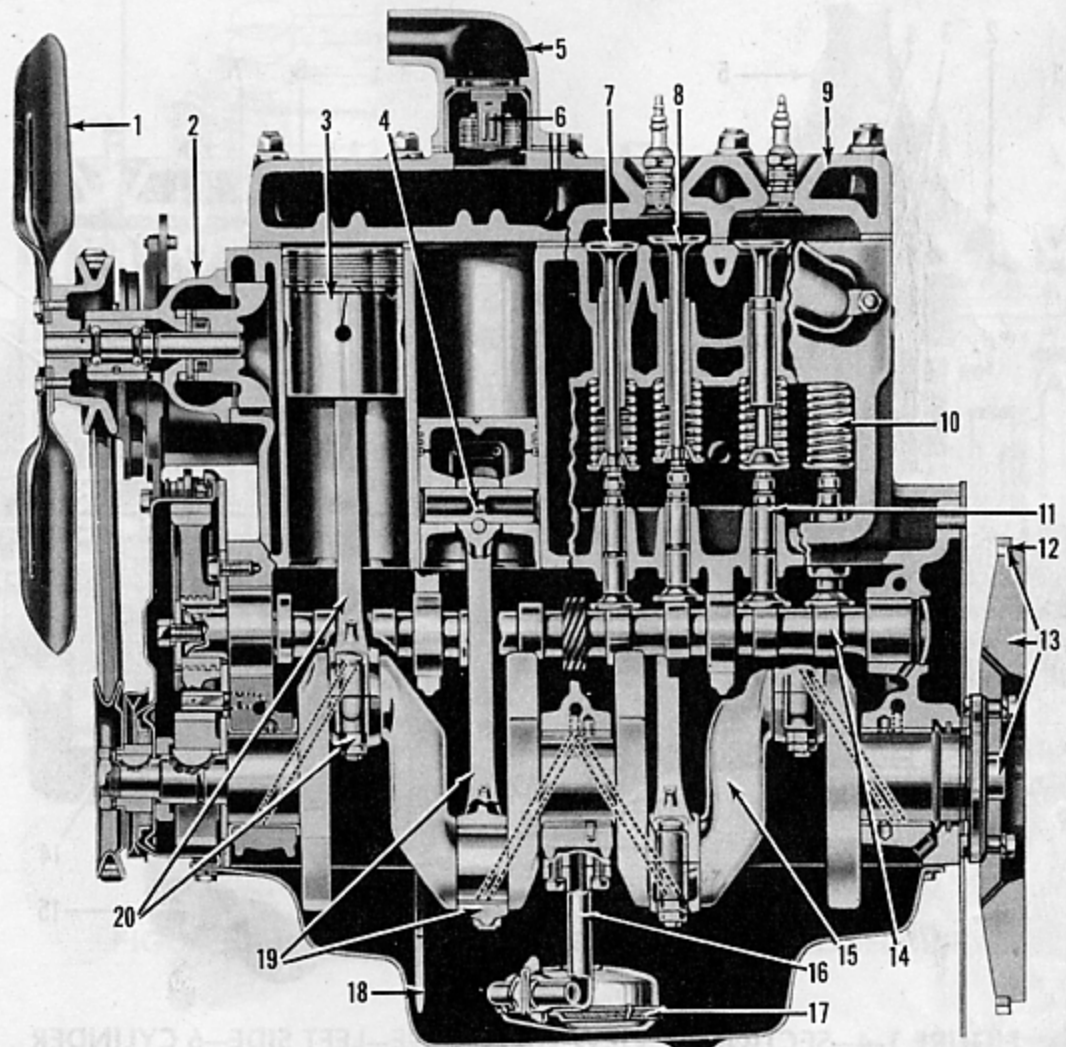


FIGURE 1-3—SECTIONAL VIEW OF ENGINE—LEFT SIDE—4 CYLINDER

KEY	PART NAME	GROUP	KEY	PART NAME	GROUP
1	Fan . . . . .	6.000	11	Tappet Assembly . . . . .	1.740
2	Pump, Water . . . . .	6.300	12	Ring Gear . . . . .	1.360
3	Piston with Pin . . . . .	1.410	13	Flywheel Assembly . . . . .	1.360
4	Pin, Piston . . . . .	1.420	14	Camshaft . . . . .	1.500
5	Elbow, Cylinder Head Water Outlet . . . . .	6.425	15	Crankshaft . . . . .	1.300
6	Thermostat . . . . .	6.410	16	Support, Oil Pump Float . . . . .	2.235
7	Valve, Exhaust . . . . .	1.720	17	Float, Oil Pump . . . . .	2.235
8	Valve, Intake . . . . .	1.720	18	Indicator, Oil Level . . . . .	2.415
9	Head, Cylinder . . . . .	1.200	19	Connecting Rod, No. 2 and 4 . . . . .	1.400
10	Spring, Valve . . . . .	1.720	20	Connecting Rod, No. 1 and 3 . . . . .	1.400

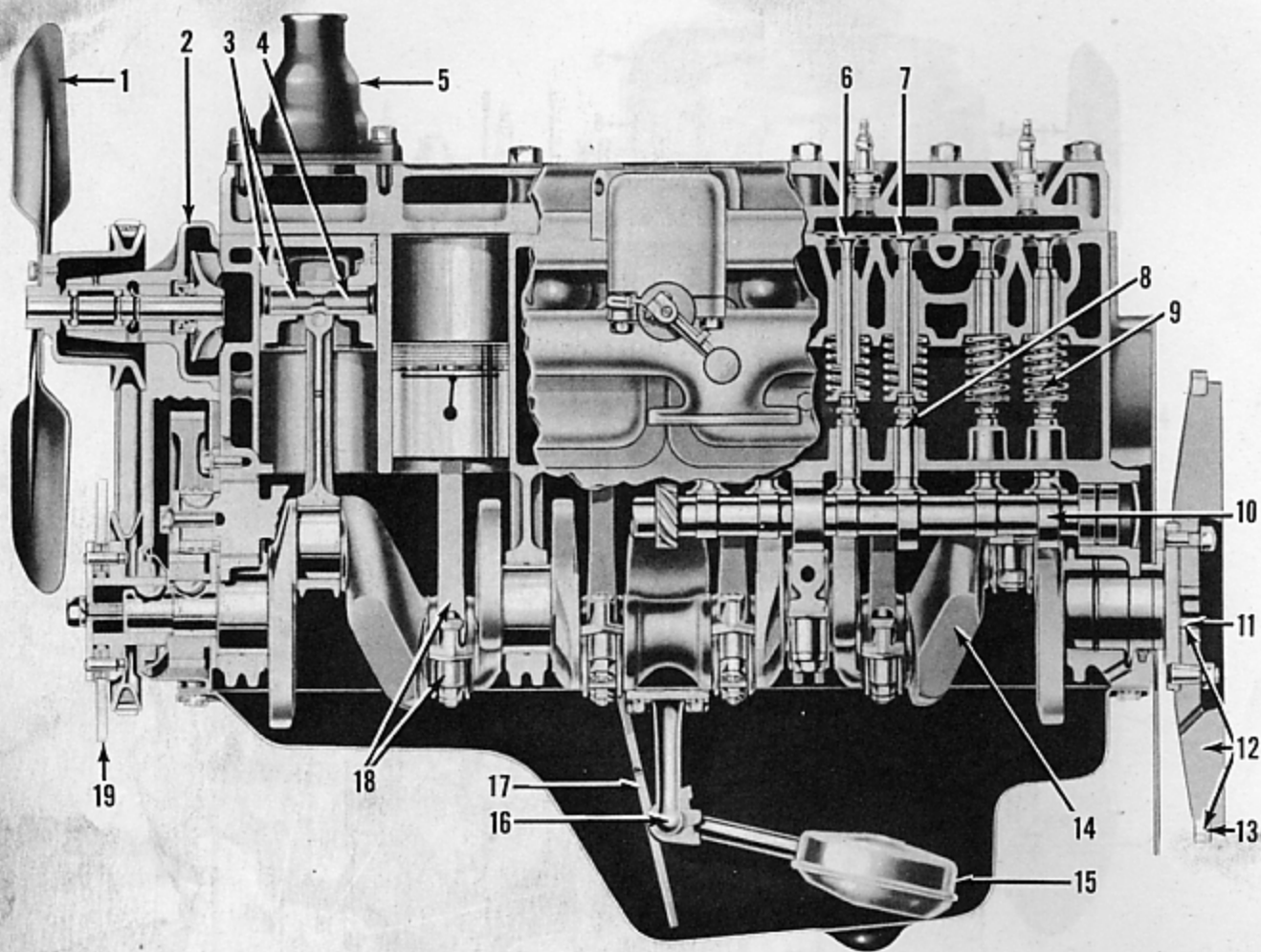


FIGURE 1-4—SECTIONAL VIEW OF ENGINE—LEFT SIDE—6 CYLINDER

KEY	PART NAME	GROUP	KEY	PART NAME	GROUP
1	Fan . . . . .	6.000	11	Bushing, Pilot . . . . .	1.360
2	Pump, Water . . . . .	6.300	12	Flywheel Assembly . . . . .	1.360
3	Piston with Pin . . . . .	1.410	13	Ring Gear . . . . .	1.360
4	Pin, Piston . . . . .	1.420	14	Crankshaft . . . . .	1.300
5	Elbow, Cylinder Head Water Outlet . . . . .	6.425	15	Float, Oil Pump . . . . .	2.235
6	Valve, Exhaust . . . . .	1.720	16	Support, Oil Pump Float . . . . .	2.235
7	Valve, Intake . . . . .	1.720	17	Gauge, Oil Depth (or Dip Stick) . . . . .	2.415
8	Tappet Assembly . . . . .	1.740	18	Connecting Rod Assembly . . . . .	1.400
9	Spring, Valve . . . . .	1.720	19	Disc, Vibration Damper . . . . .	1.330
10	Camshaft . . . . .	1.500			

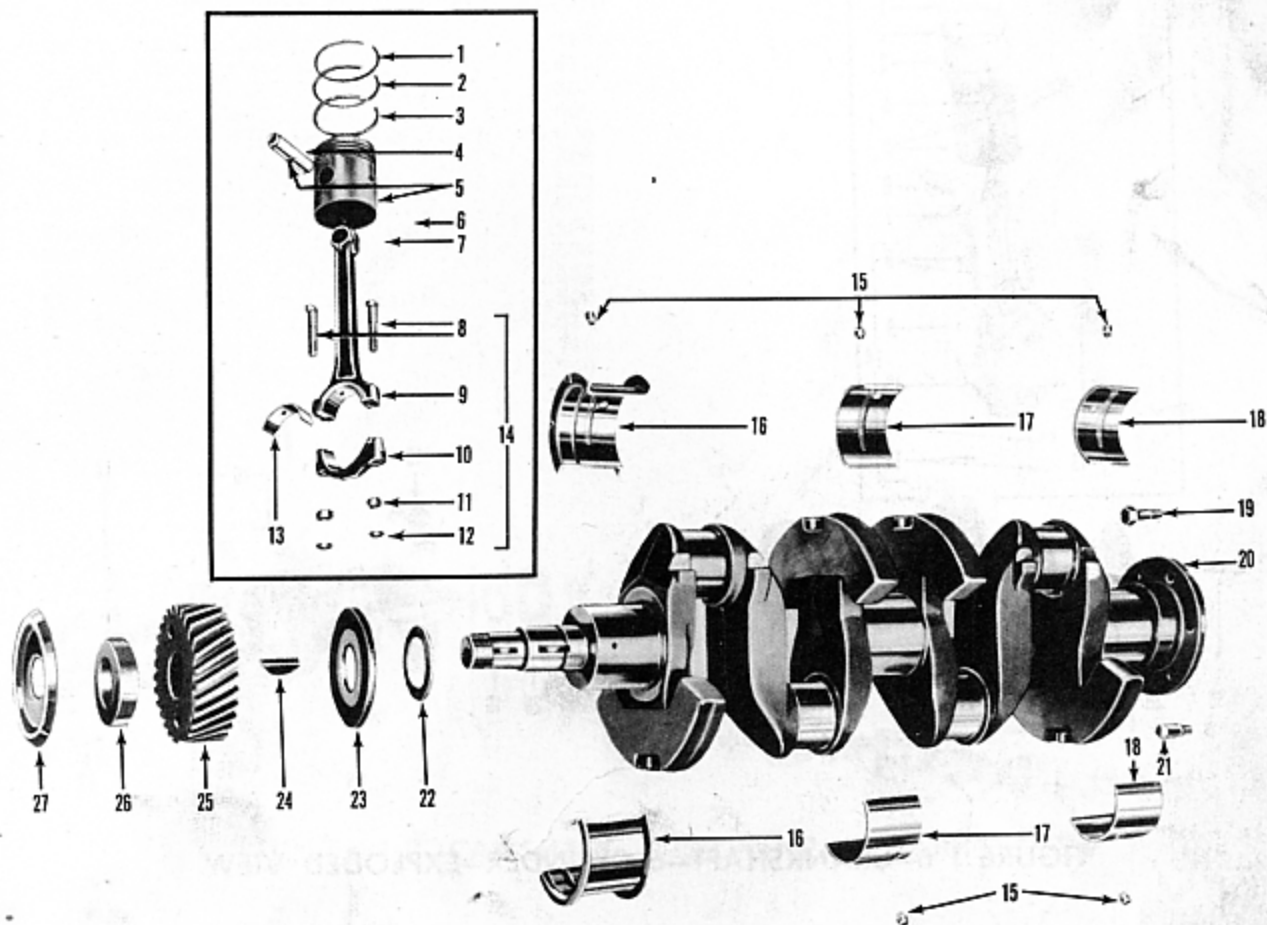


FIGURE 1-5—CRANKSHAFT—4 CYLINDER—EXPLODED VIEW

KEY	PART NAME	GROUP	KEY	PART NAME	GROUP
1	Ring, Compression, Upper . . . . .	1.415	15	Dowel, Main Bearing . . . . .	1.320
2	Ring, Compression, Lower . . . . .	1.415	16	Bearing, Main, No. 1 Upper and Lower (sold in Pairs). . . . .	1.315
3	Ring, Oil Control. . . . .	1.415	17	Bearing, Main, No. 2 Upper and Lower (sold in Pairs). . . . .	1.315
4	Pin, Piston. . . . .	1.420	18	Bearing, Main, No. 3 Upper and Lower (sold in Pairs). . . . .	1.315
5	Piston with Pin. . . . .	1.410	19	Bolt, Flywheel to Crankshaft. . . . .	1.360
6	Lock Screw, Piston Pin . . . . .	1.420	20	Crankshaft. . . . .	1.300
7	Lockwasher . . . . .	1.420	21	Dowel Screw, Flywheel. . . . .	1.360
8	Bolt, Connecting Rod . . . . .	1.400	22	Shim . . . . .	1.310
9	Rod, Connecting (sold in Assembly only). . . . .	1.400	23	Thrustwasher . . . . .	1.310
10	Cap, Connecting Rod (sold in Assembly only). . . . .	1.400	24	Key, Timing Gear . . . . .	1.600
11	Nut, Connecting Rod Bolt . . . . .	1.400	25	Gear, Timing . . . . .	1.600
12	Nut, Connecting Rod Bolt (Stamped) . . . . .	1.400	26	Spacer, Timing Gear . . . . .	1.600
13	Bearing, Connecting Rod (sold in Pairs) . . . . .	1.405	27	Slinger, Oil . . . . .	1.310
14	Connecting Rod Assembly . . . . .	1.400			

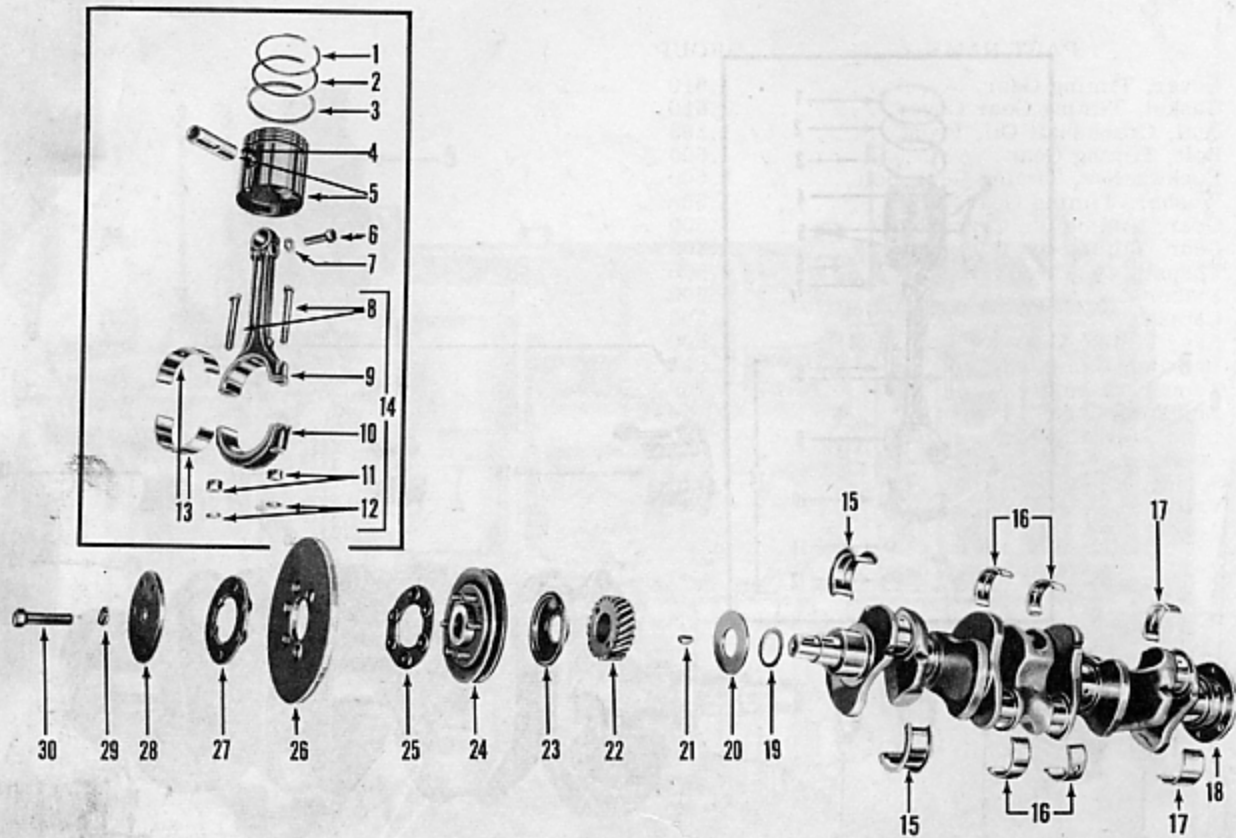


FIGURE 1-6—CRANKSHAFT—6 CYLINDER—EXPLODED VIEW

KEY	PART NAME	GROUP	KEY	PART NAME	GROUP
1	Ring, Upper Compression Piston . . .	1.415	16	Bearing, Main No. 2 and 3 Upper and Lower (sold in Pairs) . . . . .	1.315
2	Ring, Lower Compression Piston . . .	1.415	17	Bearing, Main No. 4 Upper and Lower (sold in Pairs) . . . . .	1.315
3	Ring, Oil Control . . . . .	1.415	18	Crankshaft . . . . .	1.300
4	Pin, Piston . . . . .	1.420	19	Shim . . . . .	1.310
5	Piston with Pin . . . . .	1.410	20	Thrustwasher . . . . .	1.310
6	Lock Screw, Piston Pin . . . . .	1.420	21	Key, Timing Gear . . . . .	1.600
7	Lockwasher, Piston Pin . . . . .	1.420	22	Gear, Timing . . . . .	1.600
8	Bolt, Connecting Rod . . . . .	1.400	23	Slinger, Oil . . . . .	1.310
9	Rod, Connecting (sold in Assembly only) . . . . .	1.400	24	Pulley, Vibration Damper . . . . .	1.350
10	Cap, Connecting Rod (sold in Assembly only) . . . . .	1.400	25	Insulator, Vibration Damper Disc, Rear . . . . .	1.330
11	Nut, Connecting Rod Bolt . . . . .	1.400	26	Disc, Vibration Damper . . . . .	1.330
12	Locknut, Connecting Rod Bolt . . . . .	1.400	27	Insulator, Vibration Damper Disc, Front . . . . .	1.330
13	Bearing, Connecting Rod (sold in Pairs) . . . . .	1.405	28	Plate, Vibration Damper Clamp . . . . .	1.330
14	Connecting Rod Assembly . . . . .	1.400	29	Lockwasher, Vibration Damper . . . . .	1.330
15	Bearing, Main No. 1 Upper and Lower (sold in Pairs) . . . . .	1.315	30	Bolt, Vibration Damper . . . . .	1.330

KEY	PART NAME	GROUP
1	Cover, Timing Gear . . . . .	1.610
2	Gasket, Timing Gear Cover. . . . .	1.610
3	Seal, Crankshaft Oil, Front. . . . .	1.303
4	Bolt, Timing Gear . . . . .	1.600
5	Lockwasher, Timing Gear Bolt . . . . .	1.600
6	Washer, Timing Gear. . . . .	1.600
7	Gear, Timing (on Crankshaft) . . . . .	1.600
8	Gear, Timing (on Camshaft) . . . . .	1.600
9	Thrustplate . . . . .	1.500
10	Spacer. . . . .	1.500
11	Camshaft. . . . .	1.500
12	Key, Timing Gear (on Camshaft) . . . . .	1.600
13	Bearing, Camshaft. . . . .	1.510
14	Tappet Assembly. . . . .	1.740
15	Adjusting Screw, Tappet. . . . .	1.740
16	Lock, Valve Spring . . . . .	1.720
17	Retainer, Valve Spring Lock . . . . .	1.720
18	Spring, Valve . . . . .	1.720
19	Valve . . . . .	1.720

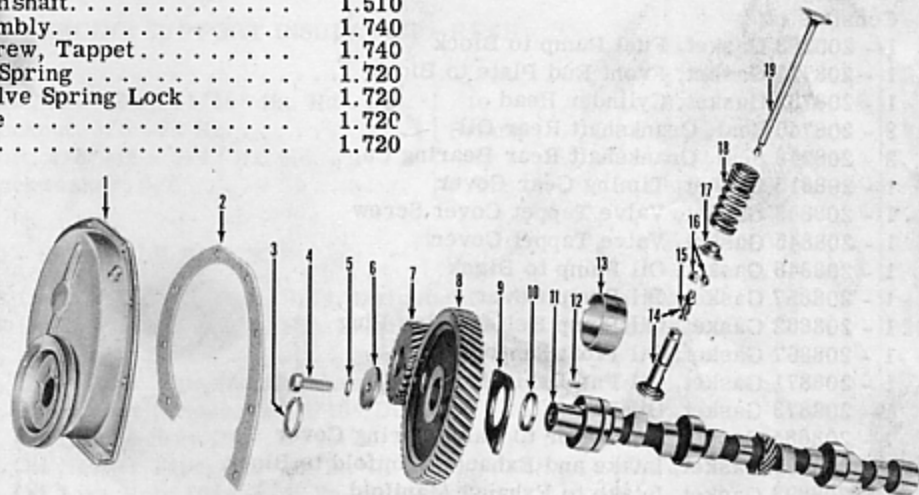


FIGURE 1-7—CAMSHAFT—4 CYLINDER—EXPLODED VIEW

KEY	PART NAME	GROUP
1	Cover, Timing Gear . . . . .	1.610
2	Gasket, Timing Gear Cover. . . . .	1.610
3	Seal, Crankshaft Oil, Front. . . . .	1.303
4	Bolt, Timing Gear . . . . .	1.600
5	Lockwasher, Timing Gear Bolt . . . . .	1.600
6	Washer, Timing Gear. . . . .	1.600
7	Gear, Timing (on Crankshaft) . . . . .	1.600
8	Gear, Timing (on Camshaft) . . . . .	1.600
9	Thrustplate . . . . .	1.500
10	Spacer. . . . .	1.500
11	Key, Timing Gear (on Camshaft) . . . . .	1.600
12	Bearing, Camshaft. . . . .	1.510
13	Camshaft. . . . .	1.500
14	Tappet Assembly . . . . .	1.740
15	Adjusting Screw, Tappet. . . . .	1.740
16	Lock, Valve Spring . . . . .	1.720
17	Retainer, Valve Spring Lock . . . . .	1.720
18	Spring, Valve . . . . .	1.720
19	Valve . . . . .	1.720

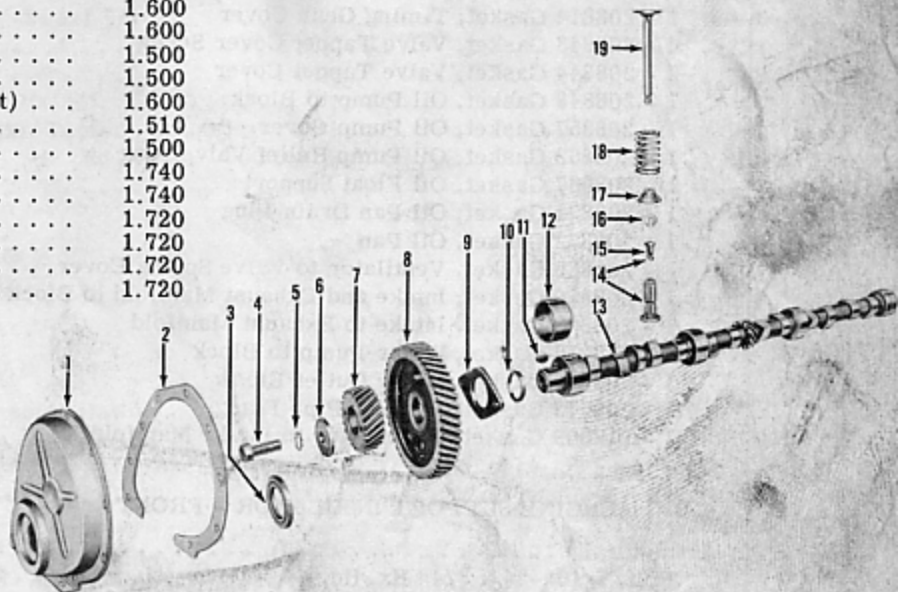


FIGURE 1-8—CAMSHAFT—6 CYLINDER—EXPLODED VIEW

## ENGINE

FIGURE NUMBER	GROUP, PART NAME and DESCRIPTION	PART NUMBER	USED PER CAR MODEL	
			513	514
	<b>1.000 - ENGINE</b>			
	Engine (less Accessories, Clutch and Clutch Housing) . . . . .	208950	1	
	Engine (less Accessories, Clutch and Clutch Housing) . . . . .	208949		1
	Flatwasher, 17/32" . . . . . { to Front } . . . . .	222	2	2
	Locknut, 1/2"-20 Hx. . . . . { Insulator } . . . . .	223	2	2
	Gasket Set, Overhaul . . . . .	212328	1	
	Consists of:			
	1 - 200283 Gasket, Fuel Pump to Block			
	1 - 208727 Gasket, Front End Plate to Block			
	1 - 208732 Gasket, Cylinder Head			
	2 - 208746 Seal, Crankshaft Rear Oil			
	2 - 208748 Seal, Crankshaft Rear Bearing Cap			
	1 - 208815 Gasket, Timing Gear Cover			
	1 - 208843 Gasket, Valve Tappet Cover Screw			
	1 - 208845 Gasket, Valve Tappet Cover			
	1 - 208848 Gasket, Oil Pump to Block			
	1 - 208857 Gasket, Oil Pump Cover			
	1 - 208862 Gasket, Oil Pump Relief Valve Plug			
	1 - 208867 Gasket, Oil Float Support			
	1 - 208871 Gasket, Oil Pan Drain Plug			
	1 - 208873 Gasket, Oil Pan			
	1 - 208885 Gasket, Ventilator to Valve Spring Cover			
	1 - 208891 Gasket, Intake and Exhaust Manifold to Block			
	1 - 208893 Gasket, Intake to Exhaust Manifold			
	1 - 208917 Gasket, Water Pump to Block			
	1 - 208934 Gasket, Water Outlet Elbow			
	1 - 209573 Gasket, Exhaust Pipe Flange			
	1 - 212009 Gasket, Carburetor to Intake Manifold			
	Gasket Set, Overhaul . . . . .	212329		1
	Consists of:			
	1 - 200283 Gasket, Fuel Pump to Block			
	1 - 208726 Gasket, Front End Plate to Block			
	1 - 208731 Gasket, Cylinder Head			
	2 - 208746 Seal, Crankshaft Rear Oil			
	2 - 208747 Packing, Crankshaft Rear Bearing Cap			
	1 - 208814 Gasket, Timing Gear Cover			
	4 - 208843 Gasket, Valve Tappet Cover Screw			
	2 - 208844 Gasket, Valve Tappet Cover			
	1 - 208848 Gasket, Oil Pump to Block			
	1 - 208857 Gasket, Oil Pump Cover			
	1 - 208862 Gasket, Oil Pump Relief Valve Plug			
	1 - 208867 Gasket, Oil Float Support			
	1 - 208871 Gasket, Oil Pan Drain Plug			
	1 - 208872 Gasket, Oil Pan			
	1 - 208885 Gasket, Ventilator to Valve Spring Cover			
	1 - 208890 Gasket, Intake and Exhaust Manifold to Block			
	1 - 208892 Gasket, Intake to Exhaust Manifold			
	1 - 208916 Gasket, Water Pump to Block			
	1 - 208933 Gasket, Water Outlet Elbow			
	1 - 209573 Gasket, Exhaust Pipe Flange			
	1 - 212009 Gasket, Carburetor to Intake Manifold			
	<b>1.010 - ENGINE SUPPORT INSULATOR - FRONT</b>			
	Insulator . . . . .	209522	2	2
	Bolt, 5/16"-24 x 3/4" Hx. Hd. . . . .	224		4
	Flatwasher, 5/16" . . . . . { Support } . . . . .	225		4
	Lockwasher, 5/16" . . . . . { Bracket } . . . . .	240		4
	Nut, 5/16"-24 Hx. . . . .	189		4



# ENGINE

1

FIGURE NUMBER	GROUP, PART NAME and DESCRIPTION	PART NUMBER	USED PER CAR MODEL	
			513	514
			<p><b>1.010 - ENGINE SUPPORT INSULATOR - FRONT (Cont'd)</b></p> <p>Lockwasher, 1/2" Med. . . . . { to } . . . . . 479 2</p> <p>Nut, 1/2"-20 Hx. . . . . { Plate } . . . . . 278 2</p> <p>Bolt, 5/16"-24 x 3/4" Hx. Hd. . . . . { to } . . . . . 224 4 4</p> <p>Locknut, 5/16"-24 Hx. . . . . { Frame } . . . . . 326 4 4</p> <p><b>1.020 - ENGINE SUPPORT INSULATOR - REAR</b></p> <p>Insulator . . . . . 212350 1 1</p> <p>Bolt, 3/8"-24 x 11/16" Hx. Hd. . . . . { to } . . . . . 675 2 2</p> <p>Locknut, 3/8"-24 Hx. . . . . { Frame } . . . . . 203311 2 2</p> <p>Bolt, 3/8"-16 x 3/4" Hx. Hd. . . . . { to } . . . . . 220 2 2</p> <p>Lockwasher, 3/8" . . . . . { Trans. } . . . . . 291 2 2</p> <p><b>1.100 - CYLINDER BLOCK</b></p> <p>Block (incl. Pistons, Rings, Pins, Main and Camshaft Bearings) . . . . . 209521 1</p> <p>Block (incl. Pistons, Rings, Pins, Main and Camshaft Bearings) . . . . . 209520 1</p> <p>Plug, Pipe, 1/8" Sq. . . . . 168 4</p> <p>Plug, Oil Header Pipe and Crankshaft Bearing, 1/8" Hd'ls. Sl . . . . . 527 1</p> <p>Plug, Oil Header (Expansion) 5/16" Dia. . . . . 930 3</p> <p>Plug, Rear Core Hole Pipe, 1" Hd'ls. Ct'sk . . . . . 932 1</p> <p>Plug, Oil Header Pipe, 3/8" Hd'ls. Ct'sk . . . . . 208720 2 2</p> <p>Plug, Oil Line Hole Pipe, 1/4" Sq. Hd. . . . . 933 1</p> <p>Plug, Camshaft Rear Bearing (Expansion) 1 3/4" Dia . . . . . 929 1 1</p> <p>Plug, Water Jacket (Expansion) 1 1/4" Dia . . . . . 931 5 4</p> <p>Tube, Water Pump By-Pass . . . . . 208722 1</p> <p>Drain Cock . . . . . 208721 1 1</p> <p><b>1.105 - CYLINDER BLOCK END PLATE - FRONT</b></p> <p>1-1-7 Plate . . . . . 208724 1</p> <p>1-2-8 Plate . . . . . 208723 1</p> <p>Gasket . . . . . 208727 1</p> <p>Gasket . . . . . 208726 1</p> <p>Stud, 3/8"-16 x 3/8"-24 x 1 5/16" . . . . . 208725 2</p> <p>Lockwasher, 3/8" . . . . . 192 2</p> <p>Nut, 3/8"-24 Hx. . . . . 188 2</p> <p>Bolt, 3/8"-16 x 3/4" Hx. Hd. . . . . 220 3</p> <p>Lockwasher, 3/8" Ext. Tooth . . . . . 291 3</p> <p>Bolt, 5/16"-18 x 3/4" Hx. Hd. . . . . 183 3</p> <p>Lockwasher, 5/16" Med . . . . . 240 3</p> <p><b>1.110 - CYLINDER BLOCK END PLATE - REAR</b></p> <p>1-1-10 Plate . . . . . 208728 1 1</p> <p><b>1.200 - CYLINDER HEAD</b></p> <p>1-3-9 Head (7.00 to 1 Compression Ratio) . . . . . 208730 1</p> <p>Head (7.00 to 1 Compression Ratio) . . . . . 208729 1</p> <p>Stud, 7/16"-14 x 7/16"-20 x 3 3/8" . . . . . 208733 15 21</p> <p>Nut . . . . . 208736 15 21</p> <p>Gasket . . . . . 208732 1</p> <p>Gasket . . . . . 208731 1</p> <p>Plug, Pipe, 1/2" Sq. Hd. . . . . 951 1</p> <p>Plug, Pipe, 3/8" Sq. Hd. . . . . 121 1 1</p>	

## ENGINE

FIGURE NUMBER	GROUP, PART NAME and DESCRIPTION	PART NUMBER	USED PER CAR MODEL	
			513	514
	<b>1.300 - CRANKSHAFT</b>			
	NOTE: When ordering a Crankshaft, a Repair Kit, Part No. 209719, must also be ordered.			
1-5-20	Crankshaft . . . . .	209514	1	
1-6-18	Crankshaft . . . . .	209513		1
	Repair Kit . . . . .	209719	1	1
	Consists of:			
1-5-19	Bolt . . . . .	209580	2	2
	Lockwasher, 1/2" Ext. Tooth . . . . .	848	2	2
	Jam Nut, 1/2"-20 Hx. . . . .	632	2	2
	<b>1.303 - CRANKSHAFT OIL SEAL</b>			
1-7-3	Seal, Front (in Timing Gear Cover) . . . . .	208816	1	1
1-8-3	Seal, Rear . . . . .	208746	2	2
	<b>1.310 - CRANKSHAFT THRUSTWASHER</b>			
1-5-23	Thrustwasher . . . . .	208738	1	
1-6-20	Thrustwasher . . . . .	208737		1
1-5-22	Shim, .002 . . . . .	208742	*	
1-6-19	Shim, .002 . . . . .	208741		*
1-5-27	Slinger, Oil . . . . .	208740	1	
1-6-23	Slinger, Oil . . . . .	208739		1
	<b>1.315 - CRANKSHAFT MAIN BEARING</b>			
1-6-15	Bearing, No. 1 Std . . . . .	209523		1
1-5-16	Bearing, No. 1 Std . . . . .	209524	1	
1-6-16	Bearing, No. 2 and 3 Std . . . . .	209533		2
1-5-17	Bearing, No. 2 Std . . . . .	209534	1	
1-6-17	Bearing, No. 4 Std . . . . .	209543		1
1-5-18	Bearing, No. 3 Std . . . . .	209544	1	
	Bearing, No. 1 .001 Undersize . . . . .	209525		1
	Bearing, No. 1 .001 Undersize . . . . .	209526	1	
	Bearing, No. 2 and 3 .001 Undersize . . . . .	209535		2
	Bearing, No. 2 .001 Undersize . . . . .	209536	1	
	Bearing, No. 4 .001 Undersize . . . . .	209545		1
	Bearing, No. 3 .001 Undersize . . . . .	209546	1	
	Bearing, No. 1 .002 Undersize . . . . .	209527		1
	Bearing, No. 1 .002 Undersize . . . . .	209528	1	
	Bearing, No. 2 and 3 .002 Undersize . . . . .	209537		2
	Bearing, No. 2 .002 Undersize . . . . .	209538	1	
	Bearing, No. 4 .002 Undersize . . . . .	209547		1
	Bearing, No. 3 .002 Undersize . . . . .	209548	1	
	Bearing, No. 1 .010 Undersize . . . . .	209529		1
	Bearing, No. 1 .010 Undersize . . . . .	209530	1	
	Bearing, No. 2 and 3 .010 Undersize . . . . .	209539		2
	Bearing, No. 2 .010 Undersize . . . . .	209540	1	
	Bearing, No. 4 .010 Undersize . . . . .	209549		1
	Bearing, No. 3 .010 Undersize . . . . .	209550	1	
	NOTE: Engines with Engine Number followed by the letter "A" have .010 Undersize Main Bearings.			

# ENGINE

FIGURE NUMBER	GROUP, PART NAME and DESCRIPTION	PART NUMBER	USED PER CAR MODEL	
			513	514
	<b>1.315 - CRANKSHAFT MAIN BEARING (Cont'd)</b>			
	Bearing, No. 1 .012 Undersize . . . . .	209531		1
	Bearing, No. 1 .012 Undersize . . . . .	209532	1	
	Bearing, No. 2 and 3 .012 Undersize . . . . .	209541		2
	Bearing, No. 2 .012 Undersize . . . . .	209542	1	
	Bearing, No. 4 .012 Undersize . . . . .	209551		1
	Bearing, No. 3 .012 Undersize . . . . .	209552	1	
	Bearing, No. 1 .020 Undersize . . . . .	213268		1
	Bearing, No. 1 .020 Undersize . . . . .	213269	1	
	Bearing, No. 2 and 3 .020 Undersize . . . . .	213270		2
	Bearing, No. 2 .020 Undersize . . . . .	213271	1	
	Bearing, No. 4 .020 Undersize . . . . .	213272		1
	Bearing, No. 3 .020 Undersize . . . . .	213273	1	
	Packing, Rear Bearing . . . . .	208748	2	
	Packing, Rear Bearing . . . . .	208747		2
	<b>1.320 - CRANKSHAFT MAIN BEARING CAPS</b>			
1-5-15	Dowel (Bearing to Cap and Block) . . . . .	208745	5	
	Bolt . . . . .	208744	6	
	Lockwasher, 1/2" Med . . . . .	479	6	
	Bolt . . . . .	208743		8
	Lockwasher, 7/16" Med . . . . .	193		8
	<b>1.330 - VIBRATION DAMPER</b>			
1-6-26	Disc . . . . .	208751		1
1-6-27	Insulator, Disc, Front. . . . .	208753		1
1-6-25	Insulator, Disc, Rear . . . . .	208754		1
1-6-28	Plate, Clamp. . . . .	208755		1
1-6-30	Bolt, 7/16"-20 x 1 3/4" Hx. Hd. . . . .	501		1
1-6-29	Lockwasher, 7/16" . . . . .	193		1
	<b>1.350 - CRANKSHAFT PULLEY</b>			
	Pulley and Hub . . . . .	208750	1	
	Key . . . . .	194	1	
	Nut . . . . .	208756	1	
1-6-24	Pulley and Hub (with Studs) . . . . .	208749		1
	Key, Woodruff No. 9 . . . . .	194		1
	<b>1.360 - FLYWHEEL</b>			
	<b>NOTE: When ordering a Flywheel, a Repair Kit, Part No. 209719, <u>must</u> also be ordered.</b>			
1-4-12	Flywheel (incl. Ring Gear and Pilot Bushing) . . . . .	209596	1	1
1-5-19	Bolt . . . . .	208759	4	4
1-5-21	Dowel Screw . . . . .	208758	2	2
	Lockwasher, 3/8" Ext. Tooth . . . . .	291	6	6
	Nut, 3/8"-24 Hx. . . . .	188	6	6
1-4-13	Ring Gear . . . . .	208760	1	1
1-4-11	Bushing, Pilot . . . . .	208761	1	1
	Repair Kit . . . . .	209719	1	1
	Consists of: (See next page.)			

# ENGINE

FIGURE NUMBER	GROUP, PART NAME and DESCRIPTION	PART NUMBER	USED PER CAR MODEL	
			513	514
	<b>1.360 - FLYWHEEL (Cont'd)</b>			
	Consists of:			
	Bolt . . . . .	209580	2	2
	Lockwasher, 1/2" Ext. Tooth . . . . .	848	2	2
	Jam Nut, 1/2"-20 Hx. . . . .	632	2	2
	Instruction Drawing . . . . .		1	1
	<b>1.370 - TIMING POINTER</b>			
	Pointer . . . . .	208757		1
1-1-12	Cover, Timing Hole . . . . .	208762	1	1
	Bolt, 1/4"-20 x 3/8" Hx. Hd. Tap . . . . .	980	1	1
	Bolt, 1/4"-20 x 3/8" Rd. Hd. Cr. Rec. . . . .	474	1	1
	Lockwasher, 1/4" Med . . . . .	190	1	1
	<b>1.400 - CONNECTING ROD</b>			
1-5-14	Rod, No. 1 and 3 . . . . .	208764	2	
1-5-14	Rod, No. 2 and 4 . . . . .	208765	2	
1-5-8	Bolt . . . . .	208767	8	
1-5-11	Nut . . . . .	208769	8	
1-5-12	Nut, 3/8"-24 Hx. Stamped . . . . .	205785	8	
1-6-14	Rod . . . . .	208763		6
1-6-8	Bolt . . . . .	208766		12
1-6-11	Nut . . . . .	208768		12
1-6-12	Locknut, 11/32"-24 . . . . .	208770		12
	<b>1.405 - CONNECTING ROD BEARING</b>			
1-5-13	Bearing, Std . . . . .	213007	4	
1-6-13	Bearing, Std . . . . .	213008		6
	Bearing, .001 Undersize . . . . .	213009	*	
	Bearing, .001 Undersize . . . . .	213010		*
	Bearing, .002 Undersize . . . . .	213011	*	
	Bearing, .002 Undersize . . . . .	213012		*
	Bearing, .010 Undersize . . . . .	213013	*	
	Bearing, .010 Undersize . . . . .	213014		*
	<b>NOTE: Engines with Engine Numbers followed by letter "A" have .010 Undersize Connecting Rod Bearings.</b>			
	Bearing, .012 Undersize . . . . .	213015	*	
	Bearing, .012 Undersize . . . . .	213016		*
	Bearing, .020 Undersize . . . . .	213274	*	
	Bearing, .020 Undersize . . . . .	213275		*
	<b>1.410 - PISTONS</b>			
1-5-5	Piston with Pin, Std . . . . .	208776	4	
1-6-5	Piston with Pin, Std . . . . .	209553		6
	Piston with Pin, .010 Oversize . . . . .	209556	*	
	Piston with Pin, .010 Oversize . . . . .	209555		*

# ENGINE

FIGURE NUMBER	GROUP, PART NAME and DESCRIPTION	PART NUMBER	USED PER CAR MODEL	
			513	514
	<b>1.410 - PISTONS (Cont'd)</b>			
	Piston with Pin, .020 Oversize . . . . .	209558	*	*
	Piston with Pin, .020 Oversize . . . . .	209557		*
	<b>NOTE: Engines with Engine Numbers followed by the letter "N" have .020 Oversize Pistons.</b>			
	Piston with Pin, .030 Oversize . . . . .	209560	*	*
	Piston with Pin, .030 Oversize . . . . .	209559		*
	Piston with Pin, .040 Oversize . . . . .	209562	*	*
	Piston with Pin, .040 Oversize . . . . .	209561		*
	<b>1.415 - PISTON RINGS</b>			
1-5-1	Ring, Compression, Upper, Std. . . . .	208783	4	6
	Ring, Compression, Upper, .010 Oversize . . . . .	208784	*	*
	Ring, Compression, Upper, .020 Oversize . . . . .	208785	*	*
	Ring, Compression, Upper, .030 Oversize . . . . .	208786	*	*
	Ring, Compression, Upper, .040 Oversize . . . . .	208787	*	*
1-5-2	Ring, Compression, Lower, Std . . . . .	208788	4	6
	Ring, Compression, Lower, .010 Oversize . . . . .	208789	*	*
	Ring, Compression, Lower, .020 Oversize . . . . .	208790	*	*
	Ring, Compression, Lower, .030 Oversize . . . . .	208791	*	*
	Ring, Compression, Lower, .040 Oversize . . . . .	208792	*	*
1-5-3	Ring, Oil Control, Std. . . . .	208793	4	6
	Ring, Oil Control, .010 Oversize. . . . .	208794	*	*
	Ring, Oil Control, .020 Oversize. . . . .	208795	*	*
	Ring, Oil Control, .030 Oversize. . . . .	208796	*	*
	Ring, Oil Control, .040 Oversize. . . . .	208797	*	*
	<b>1.417 - PISTON RING SETS - OIL CONTROL</b>			
	Ring Set (Std. to .009 Oversize) . . . . .	213102	1	
	Ring Set (Std. to .009 Oversize) . . . . .	213122		1
	Ring, Top Compression Piston . . . . .	213103	4	6
	Ring, 2nd Steel Section Compression Piston . . . . .	213104	4	6
	Ring, Steel Section Oil Control Piston . . . . .	213105	4	6
	Ring Set (.010 to .029 Oversize) . . . . .	213106	1	
	Ring Set (.010 to .029 Oversize) . . . . .	213123		1
	Ring, Top Compression Piston . . . . .	213107	4	6
	Ring, 2nd Steel Section Compression Piston . . . . .	213108	4	6
	Ring, Steel Section Oil Control Piston . . . . .	213109	4	6
	Ring Set (.030 to .039 Oversize) . . . . .	213110	1	
	Ring Set (.030 to .039 Oversize) . . . . .	213124		1
	Ring, Top Compression Piston . . . . .	213111	4	6
	Ring, 2nd Steel Section Compression Piston . . . . .	213112	4	6
	Ring, Steel Section Oil Control Piston . . . . .	213113	4	6
	Ring Set (.040 to .049 Oversize) . . . . .	213114	1	
	Ring Set (.040 to .049 Oversize) . . . . .	213125		1
	Ring, Top Compression Piston . . . . .	213115	4	6
	Ring, 2nd Steel Section Compression Piston . . . . .	213116	4	6
	Ring, Steel Section Oil Control Piston . . . . .	213117	4	6

\*As Required

## ENGINE

FIGURE NUMBER	GROUP, PART NAME and DESCRIPTION	PART NUMBER	USED PER CAR MODEL	
			513	514
			1.420 - PISTON PIN	
1-5-4	Pin, Std . . . . .	208778	4	
1-6-4	Pin, Std . . . . .	208777		6
	Pin, .003 Oversize (Orange) . . . . .	208780	*	
	Pin, .003 Oversize (Orange) . . . . .	208779		*
	Pin, .005 Oversize (Purple) . . . . .	208782	*	
	Pin, .005 Oversize (Purple) . . . . .	208781		*
1-6-6	Bolt. . . . .	208759	4	6
1-6-7	Lockwasher . . . . .	192	4	6
1.500 - CAMSHAFT				
1-7-11	Camshaft . . . . .	208799	1	
1-8-13	Camshaft . . . . .	208798		1
1-7-9	Thrustplate. . . . .	208801	1	
1-8-9	Thrustplate. . . . .	208800		1
1-7-10	Spacer . . . . .	208803	1	
1-8-10	Spacer . . . . .	208802		1
	Bolt, 3/8"-16 x 3/4" Hx. Hd. . . . .	220	2	
	Lockwasher, 3/8" Ext. Tooth . . . . .	291	2	
	Bolt, 5/16"-18 x 5/8" Hx. Hd. . . . .	208		2
	Lockwasher, 5/16" Med . . . . .	240		2
1.510 - CAMSHAFT BEARINGS				
1-7-13	Bearing, No. 1. . . . .	209564	1	
1-8-12	Bearing, No. 1. . . . .	209563		1
1.600 - TIMING GEAR				
1-5-25	Gear (on Crankshaft) . . . . .	208805	1	
1-6-22	Gear (on Crankshaft) . . . . .	208804		1
1-5-24	Key, 3/16" x 1" Woodruff No. 13. . . . .	953	1	
1-6-21	Key, 3/16" x 3/4" Woodruff No. 9. . . . .	194		1
1-5-26	Spacer . . . . .	208806	1	
1-7-8	Gear (on Camshaft) . . . . .	208808	1	
1-8-8	Gear (on Camshaft) . . . . .	208807		1
1-7-12	Key, 3/16" x 3/4" Woodruff No. 9. . . . .	194	1	1
1-7-4	Bolt, 7/16"-14 x 1 1/8" Hx. Hd. . . . .	213	1	1
1-7-5	Lockwasher, 7/16" Ext. Tooth . . . . .	637	1	1
1-7-6	Washer . . . . .	208809	1	1
	Jet, Oil. . . . .	208811	1	
	Jet, Oil. . . . .	208810		1
1.610 - TIMING GEAR COVER				
1-7-1	Cover (less Seal) . . . . .	208813	1	
1-8-1	Cover (less Seal) . . . . .	208812		1
1-7-2	Gasket . . . . .	208815	1	
1-8-2	Gasket . . . . .	208814		1
	Bolt, 3/8"-24 x 3/4" Hx. Hd. . . . .	439	3	
	Bolt, 3/8"-24 x 1" Hx. Hd. . . . .	327	1	
	Lockwasher, 3/8" Med . . . . .	192	4	
	Nut, 3/8"-24 Hx. . . . .	188	4	

# ENGINE

FIGURE NUMBER	GROUP, PART NAME and DESCRIPTION	PART NUMBER	USED PER CAR MODEL	
			513	514
	<b>1.610 - TIMING GEAR COVER (Cont'd)</b>			
	Stud, 3/8"-16 x 3/8"-24 x 1 5/16" . . . . .	208725	4	
	Lockwasher, 3/8" Med . . . . .	192	4	
	Nut, 3/8"-24 Hx. . . . .	188	4	
	Plug, 1/4" Fl. Tube . . . . .	208817	1	
	Bolt, 5/16"-24 x 3/4" Hx. Hd. . . . .	224		3
	Lockwasher, 5/16" Med . . . . .	240		3
	Nut, 5/16"-24 Hx. . . . .	189		3
	Bolt, 5/16"-18 x 7/8" Hx. Hd. . . . .	209		2
	Bolt, 5/16"-18 x 3/4" Hx. Hd. . . . .	183		4
	Lockwasher, 5/16" Med. . . . .	240		6
	<b>1.720 - VALVES</b>			
1-7-19	Valve, Intake . . . . .	208819	4	
1-7-19	Valve, Exhaust . . . . .	208821	4	
1-8-19	Valve, Intake . . . . .	208818		6
1-8-19	Valve, Exhaust . . . . .	208820		6
	Guide, Intake . . . . .	209567	4	
	Guide, Exhaust . . . . .	209566	4	
	Guide, Intake and Exhaust . . . . .	209565		12
1-7-18	Spring, Intake and Exhaust . . . . .	208826	8	
1-7-17	Retainer . . . . .	208828	8	
1-7-16	Lock . . . . .	208830	16	
1-8-18	Spring, Intake and Exhaust . . . . .	208825		12
1-8-17	Retainer . . . . .	208827		12
1-8-16	Lock . . . . .	208829		12
	Gasket Set, Valve Grind . . . . .	212330	1	
	Consists of:			
	1 - 200283 Gasket, Fuel Pump to Block			
	1 - 208732 Gasket, Cylinder Head			
	2 - 208843 Gasket, Valve Tappet Cover Screw			
	1 - 208845 Gasket, Valve Tappet Cover			
	1 - 208885 Gasket, Ventilator to Valve Spring Cover			
	1 - 208891 Gasket, Intake and Exhaust Manifold to Block			
	1 - 208893 Gasket, Intake to Exhaust Manifold			
	1 - 208934 Gasket, Water Outlet Elbow			
	1 - 209573 Gasket, Exhaust Pipe Flange			
	1 - 212009 Gasket, Carburetor to Intake Manifold			
	Gasket Set, Valve Grind . . . . .	212331		1
	Consists of:			
	1 - 200283 Gasket, Fuel Pump to Block			
	1 - 208731 Gasket, Cylinder Head			
	4 - 208843 Gasket, Valve Tappet Cover Screw			
	2 - 208844 Gasket, Valve Tappet Cover			
	1 - 208885 Gasket, Ventilator to Valve Spring Cover			
	1 - 208890 Gasket, Intake and Exhaust Manifold to Block			
	1 - 208892 Gasket, Intake to Exhaust Manifold			
	1 - 208933 Gasket, Water Outlet Elbow			
	1 - 209573 Gasket, Exhaust Pipe Flange			
	1 - 212009 Gasket, Carburetor to Intake Manifold			
	<b>1.740 - VALVE TAPPET</b>			
1-7-14	Tappet, Std. (incl. Screw) . . . . .	208832	8	
1-8-14	Tappet, Std. (incl. Screw) . . . . .	208831		12
	Tappet, .001 Oversize (incl. Screw) (marked "B") . . . . .	212356	*	

\*As Required

## ENGINE

FIGURE NUMBER	GROUP, PART NAME and DESCRIPTION	PART NUMBER	USED PER CAR MODEL	
			513	514
	<b>1.740 - VALVE TAPPET (Cont'd)</b>			
	Tappet, .001 Oversize (incl. Screw) (marked "B") .....	208833		*
	Tappet, .002 Oversize (incl. Screw) (marked "D") .....	212357	*	
	Tappet, .002 Oversize (incl. Screw) (marked "D") .....	208834		*
	Tappet, .005 Oversize (incl. Screw) (marked "K") .....	213030	*	
	Tappet, .005 Oversize (incl. Screw) (marked "K") .....	213031		*
1-7-15	Screw, Adjusting .....	208835	8	
1-8-15	Screw, Adjusting .....	204029		12
	<b>1.750 - VALVE TAPPET COVER</b>			
	Cover .....	208838	1	
	Cover, Front. ....	208836		1
	Cover, Rear .....	208837		1
	Gasket .....	208845	1	
	Gasket .....	208844		2
	Bolt, 5/16"-18 x 2 9/16" Hx. Hd. ....	208841	1	
	Bolt, 5/16"-18 x 3 11/16" Hx. Hd. ....	208842	1	
	Bolt, 5/16"-18 x 3 7/16" Hx. Hd. ....	208839		1
	Bolt, 5/16"-18 x 2 3/16" Hx. Hd. ....	208840		3
	Gasket, Bolt .....	208843	*	*
	<b>1.760 - CRANKCASE VENTILATION</b>			
	Body (on Valve Cover Plate) .....	208884	1	1
	Gasket .....	208885	1	1
	Check Valve (on Manifold) .....	208880	1	1
	Tube (incl. Nuts) .....	208882	1	
	Tube (incl. Nuts) .....	208881		1
	Nut, 1/2"-20 x 5/16" Inv. Fl. Tube .....	202133	2	2
	Elbow (at Valve) 1/4" Pipe, 5/16" Inv. Fl. Tube .....	208883	1	1
	Elbow (at Body) 1/8" Pipe, 5/16" Inv. Fl. Tube .....	202132	1	1
	Hose, Filler Tube to Air Cleaner, 1/2" I.D. x 12 3/4" Long. ....	212358	1	1
	Clamp, 5/8" .....	212514	1	1