

FIGURE 9-1—TRANSMISSION—EXPLODED VIEW

FIGURE 9-1—TRANSMISSION—EXPLODED VIEW

KEY	PART NAME	GROUP	KEY	PART NAME	GROUP
1	Cover, Case	9.007	33	Oil Seal, Main Shaft	9.145
2	Gasket, Case Cover	9.007	34	Flange, Propeller Shaft Companion, Front	11.004
3	Gear, Sliding, Low and Reverse	9.135	35	Flatwasher, Propeller Shaft Companion Flange	11.004
4	Gear, Sliding, Second Speed Idler	9.135	36	Lockwasher, Propeller Shaft Companion Flange	11.004
5	Blocking Ring, Second and High	9.130	37	Nut, Propeller Shaft Companion Flange	11.004
6	Snap Ring, Shifting Plate	9.130	38	Shoe, Shifting, Low and Reverse	9.185
7	Hub, Second and High Synchronizer	9.125	39	Lever and Shaft, Shifting, Inner, Low and Reverse	9.180
8	Plate, Second and High Synchronizer Shifting	9.130	40	Spring, Shifting Lever Poppet Ball	9.190
9	Sleeve, Second and High Synchronizer	9.130	41	Pin, Shifting Lever Poppet Ball	9.190
10	Synchronizer Unit, Second and High	9.125	42	Flatwasher, Outer Shifting Lever	9.195
11	Bearing, Main Shaft Roller	9.120	43	Lockwasher, Outer Shifting Lever	9.195
12	Shaft, Transmission Main	9.120	44	Nut, Outer Shifting Lever	9.195
13	Snap Ring, Second and High Synchronizer	9.125	45	Lever Assembly, Shifting, Outer, Low and Reverse	9.195
14	Thrustwasher, Countershaft Gear Cluster, Front	9.155	46	Ball, Shifting Lever Poppet	9.190
15	Gear Cluster, Countershaft	9.155	47	Sleeve, Shifting Lever Poppet Ball	9.190
16	Thrustwasher, Countershaft Gear Cluster, Rear	9.155	48	Insulator, Shifting Lever, Outer	9.195
17	Thrustwasher, Countershaft Gear Cluster, Rear	9.155	49	Lever Assembly, Shifting, Outer, Second and High	9.195
18	Washer, Countershaft Gear Bearing	9.160	50	Oil Seal, Shifting Lever, Inner	9.180
19	Spacer, Countershaft Gear Bearing	9.160	51	Lever and Shaft, Second High	9.180
20	Bearing (Roller) Countershaft Gear	9.160	52	Fork, Shifting, Second and High	9.185
21	Countershaft	9.165	53	Pin, Shifting Lever	9.180
22	Bolt, Bearing Retainer	9.145	54	Case Assembly	9.005
23	Lockwasher, Bearing Retainer Bolt	9.145	55	Plug, Expansion	9.005
24	Lockplate, Reverse Idler Gear Shaft	9.175	56	Retainer, Drive Pinion Bearing	9.115
25	Shaft, Reverse Idler Gear	9.175	57	Snap Ring, Drive Pinion Bearing	9.110
26	Bushing, Reverse Idler Gear	9.170	58	Snap Ring, Drive Pinion Bearing	9.110
27	Gear Assembly, Reverse Idler	9.170	59	Bearing, Drive Pinion	9.105
28	Snap Ring, Main Shaft Bearing	9.140	60	Slinger, Drive Pinion Bearing	9.105
29	Bearing, Main Shaft	9.140	61	Not serviced separately, see Item 64.	
30	Gasket, Main Shaft Bearing Retainer	9.145	62	Gasket, Drive Pinion Bearing Retainer	9.117
31	Retainer, Main Shaft Bearing	9.145	63	Plug, Filler and Drain	9.005
32	Gear, Speedometer Drive	9.286	64	Pinion Assembly, Drive	9.100

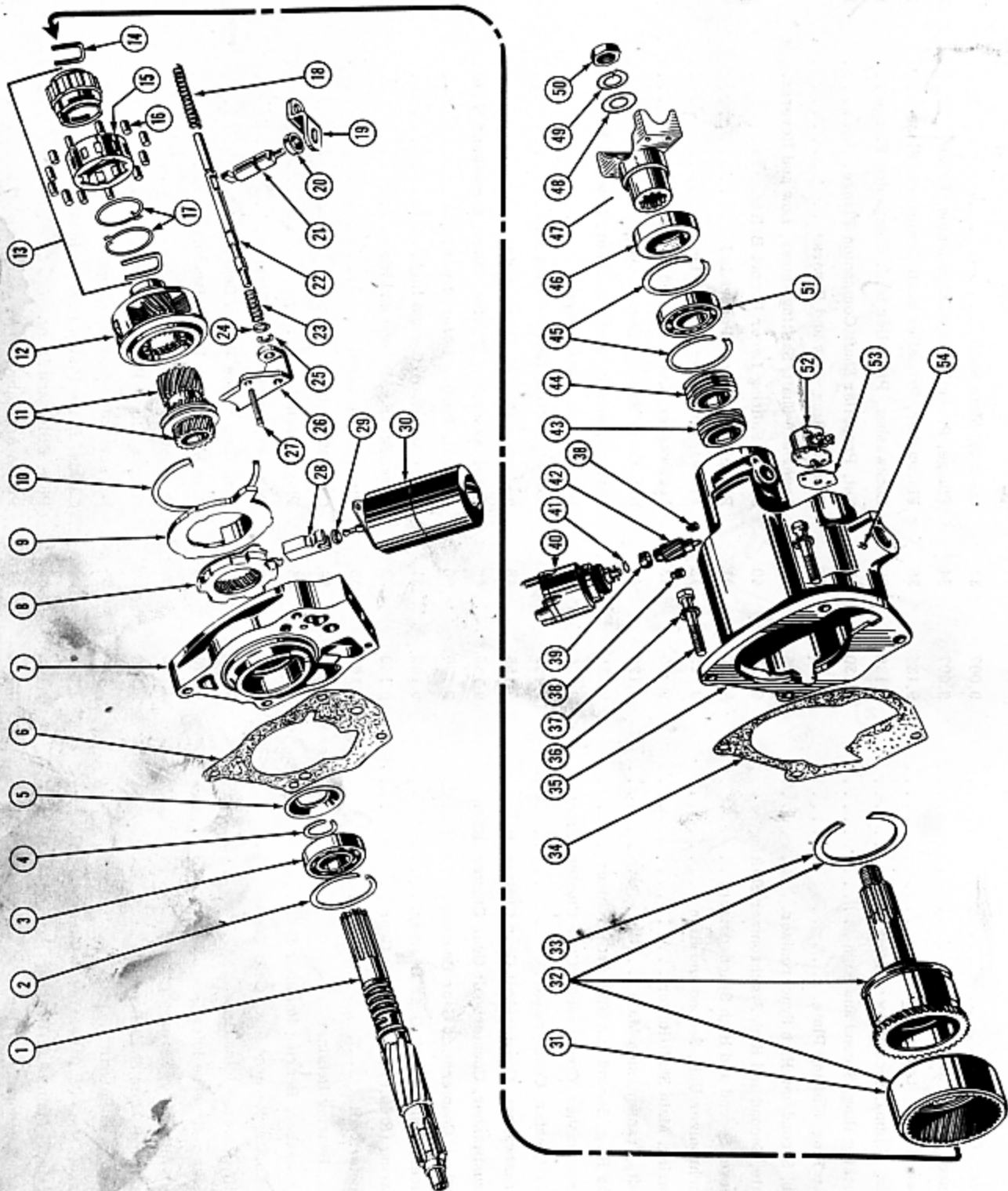


FIGURE 9-2—OVERDRIVE UNIT—EXPLODED VIEW

FIGURE 9-2—OVERDRIVE UNIT—EXPLODED VIEW

KEY	PART NAME	GROUP	KEY	PART NAME	GROUP
1	Shaft, Overdrive Transmission	9.120	28	Pawl, Stationary Gear	9.210
2	Snap Ring, Main Shaft Bearing	9.140	29	Oil Seal, Solenoid	7.800
3	Bearing, Main Shaft	9.140	30	Solenoid	7.800
4	Snap Ring, Main Shaft Bearing	9.140	31	Ring Gear	9.245
5	Baffle, Main Shaft Bearing	9.140	32	Main Shaft Assembly	9.235
6	Gasket, Overdrive Adapter to Transmission Case	9.145	33	Snap Ring, Ring Gear	9.245
7	Adapter, Overdrive Housing	9.145	34	Gasket, Housing to Adapter	9.200
8	Gear and Blocking Ring, Stationary	9.205	35	Housing	9.200
9	Plate, Stationary Gear Cover	9.215	36	Bolt, Housing	9.200
10	Snap Ring, Stationary Gear Cover Plate	9.215	37	Lockwasher, Housing Bolt	9.200
11	Gear Assembly, Stationary	9.210	38	Plug, Filler and Drain	9.200
12	Cage Assembly, Stationary Gear Pinion	9.220	39	Sleeve, Governor Pinion	9.265
13	Cam Assembly, Free Wheeling	9.225	40	Governor	9.265
14	Clip, Free Wheeling Cam	9.225	41	Retainer, Governor Pinion Sleeve	9.265
15	Retainer, Free Wheeling Cam Bearing	9.230	42	Pinion, Governor	9.265
16	Bearing, Free Wheeling Cam, Roller	9.230	43	Gear, Governor	9.286
17	Spring, Free Wheeling Cam Bearing Retainer	9.230	44	Gear, Speedometer Drive	9.286
18	Spring, Shift Control Shaft, Retractor	9.255	45	Snap Ring, Main Shaft Bearing	9.240
19	Lever, Control Shaft	9.260	46	Oil Seal, Main Shaft	9.235
20	Oil Seal, Shift Control Shaft	9.255	47	Flange, Propeller Shaft Companion, Front	11.004
21	Shaft, Shift Control	9.255	48	Flatwasher, Propeller Shaft Companion Flange	11.004
22	Rail, Shift Fork	9.250	49	Lockwasher, Propeller Shaft Companion Flange	11.004
23	Spring, Shift Control Shaft, Lock-Up	9.255	50	Nut, Propeller Shaft Companion Flange	11.004
24	Cup, Shift Control Shaft Lock-Up Spring	9.250	51	Bearing, Main Shaft	9.240
25	"C" Washer, Shift Fork	9.250	52	Switch, Shift Fork Rail	7.802
26	Fork, Shift	9.250	53	Gasket, Shift Fork Rail Switch	7.802
27	Guide, Shift Fork	9.250	54	Pin, Shift Control Shaft	9.255

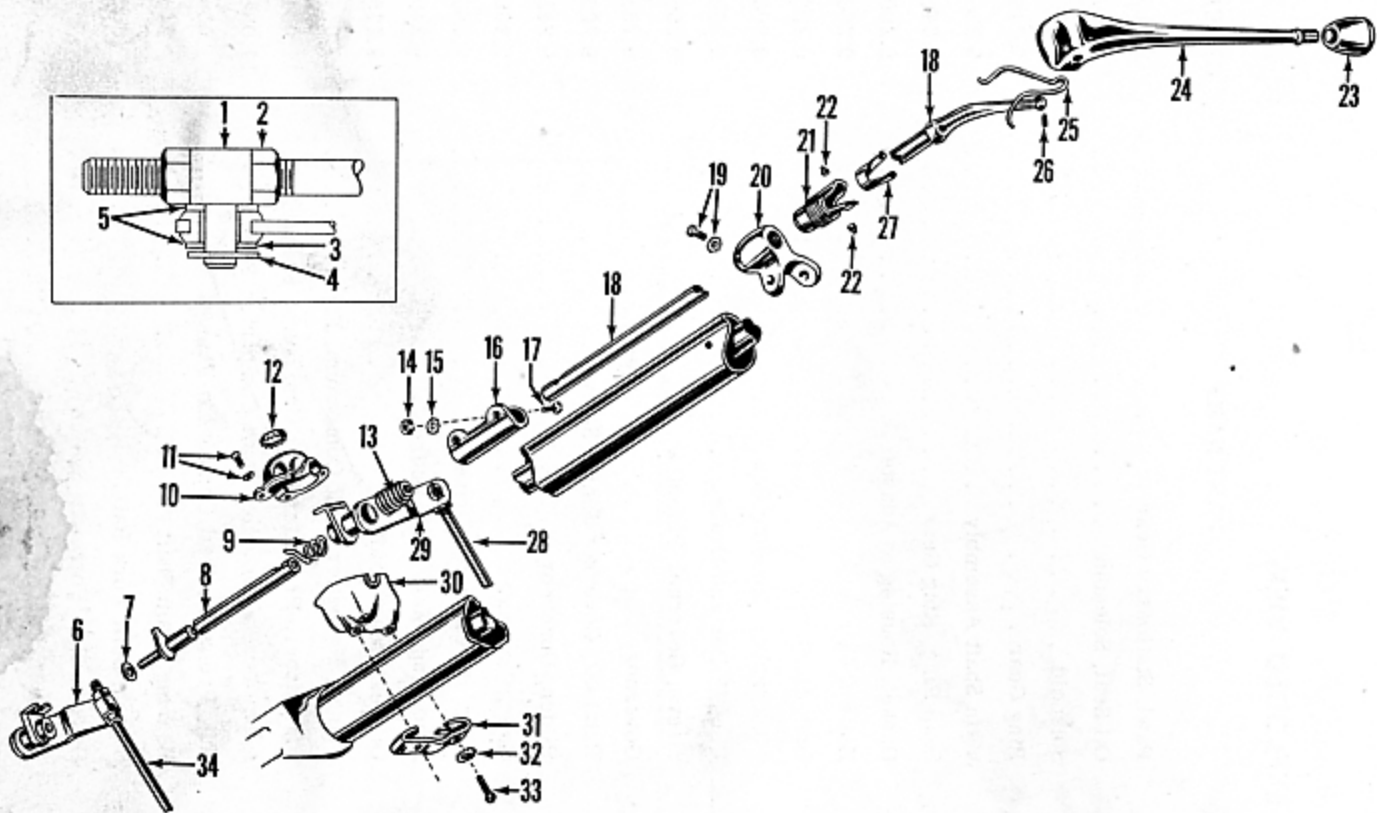


FIGURE 9-3—TRANSMISSION GEAR SHIFT CONTROL—EXPLODED VIEW

KEY	PART NAME	GROUP	KEY	PART NAME	GROUP
1	Pivot, Gear Shift Rod	9.340	17	Bolt, Upper to Lower Shaft Clamp . .	9.310
2	Jamnut, Gear Shift Rod Pivot	9.340	18	Shaft, Upper	9.320
3	Insulator, Lower Lever	9.320	19	Bolt with L/W, Upper Bracket	9.310
4	Clip, Lower Lever to Pivot	9.340	20	Bracket, Upper Shaft	9.310
5	Flatwasher, Lower Lever Pivot	9.340	21	Guide, Upper Shaft.	9.310
6	Lever Assembly, Lower (Second and High)	9.320	22	Pivot, Pin, Upper Lever	9.300
7	Washer, Lower Lever to Shaft (Second and High)	9.320	23	Knob, Upper Lever	9.300
8	Shaft Assembly, Lower	9.310	24	Lever, Upper	9.300
9	Spring, Lower Lever to Cam (Low Reverse)	9.320	25	Spring, Upper Lever Pivot Pin	9.300
10	Cover, Lever Housing	9.320	26	Spring, Shaft to Upper Lever	9.310
11	Bolt with L/W, Lever Housing Cover	9.320	27	Retainer, Upper Shaft	9.300
12	Plug, Lever Housing Cover	9.320	28	Rod, Low and Reverse	9.340
13	Dust Seal, Upper Shaft to Lower Lever	9.320	29	Lever, Low and Reverse	9.320
14	Nut, Upper to Lower Shaft Clamp	9.310	30	Housing, Lower Lever	9.320
15	Lockwasher, Upper to Lower Shaft Clamp	9.310	31	Clamp, Housing to Steering Gear Jacket	9.320
16	Clamp, Upper to Lower Shaft	9.310	32	Lockwasher, Clamp to Housing	9.320
			33	Bolt, Clamp to Housing.	9.320
			34	Rod, Second and High	9.340

TRANSMISSION AND CONTROLS

FIGURE NUMBER	GROUP, PART NAME and DESCRIPTION	PART NUMBER	USED PER CAR MODEL	
			513	514
	<i>The Companion Change Flange must be checked & changed, if necessary, to fit the Propeller shaft used</i>			
	9.000 - TRANSMISSION			
1-1-14	Transmission, Std.	209818	1	1
1-2-16	Transmission, Overdrive	209819	1	1
	Bolt, 7/16"-14 x 1 1/4" Hx. Hd. { to Clutch }	265	4	4
	Lockwasher, 7/16" Med. { Housing }	193	4	4
	9.005 - TRANSMISSION CASE			
9-1-54	Case, Std. (incl. Plug).	209820	1	1
	Case, Overdrive (incl. Plug)	209821	1	1
9-1-55	Plug, Expansion, 3/16" Dia., 1/16" Thick	672	1	1
9-1-63	Plug, Filler and Drain, 1/2" Sq. Hd.	201270	2	2
	9.007 - TRANSMISSION CASE COVER			
9-1-1	Cover, Std.	209822	1	1
	Cover, Overdrive.	209823	1	1
	Bolt, 5/16"-18 x 5/8" Hx. Hd.	208	4	4
	Gasket, Bolt	212587	4	4
9-1-2	Gasket, Std.	209824	1	1
	Gasket, Overdrive	209825	1	1
	9.100 - TRANSMISSION DRIVE PINION			
9-1-64	Pinion (incl. Bearing).	209826	1	1
	9.105 - TRANSMISSION DRIVE PINION BEARING			
9-1-59	Bearing	209274	1	1
9-1-60	Slinger.	201287	1	1
	9.110 - TRANSMISSION DRIVE PINION BEARING SNAP RING			
9-1-58	Snap Ring, .077 Thick, 2 11/16" I.D.	209827	1	1
9-1-58	Snap Ring, .074 Thick, 2 11/16" I.D.	209828	*	*
9-1-57	Snap Ring, .092 Thick.	209829	*	*
9-1-57	Snap Ring, .095 Thick.	209830	*	*
9-1-57	Snap Ring, .098 Thick.	209831	*	*
9-1-57	Snap Ring, .087 Thick.	209832	*	*
	9.115 - TRANSMISSION DRIVE PINION BEARING RETAINER			
9-1-56	Retainer.	209833	1	1
	Bolt, 5/16"-18 x 7/8" Hx. Hd.	201277	3	3
	Gasket, Bolt	212587	3	3
	9.117 - TRANSMISSION DRIVE PINION BEARING RETAINER GASKET			
9-1-62	Gasket.	209834	1	1
	9.120 - TRANSMISSION MAIN SHAFT			
	Shaft, Standard { incl. Synchronizer Unit, Second }	209835	1	1
	Shaft, Overdrive { Speed Idler, Low and Reverse Gear }	209836	1	1
9-1-12	Shaft, Standard	209837	1	1
9-2-1	Shaft, Overdrive	209838	1	1
9-1-11	Bearing, Roller	209839	13	13

*As Required

TRANSMISSION AND CONTROLS

FIGURE NUMBER	GROUP, PART NAME and DESCRIPTION	PART NUMBER	USED PER CAR MODEL	
			513	514
			9.125 - TRANSMISSION SECOND AND HIGH SYNCHRONIZER	
9-1-10	Synchronizer Unit (incl. Hub, Sleeve, Shifting Plate and Snap Rings)	209840	1	1
9-1-7	Hub	209841	1	1
9-1-13	Snap Ring	209842	1	1
9.130 - TRANSMISSION SECOND AND HIGH SYNCHRONIZER SLEEVE				
9-1-9	Sleeve	209843	1	1
9-1-8	Plate, Shifting	209844	3	3
9-1-6	Snap Ring	209845	2	2
9-1-5	Blocking Ring	209846	2	2
9.135 - TRANSMISSION SLIDING GEAR				
9-1-4	Gear, Second Speed Idler (incl. Bushing)	209847	1	1
9-1-3	Gear, Low and Reverse	209848	1	1
9.140 - TRANSMISSION MAIN SHAFT BEARING				
9-1-29	Bearing, Standard Transmission	207966	1	1
9-2-3	Bearing, Overdrive Transmission	200893	1	1
9-1-28	Snap Ring, .076 Thick	207967	*	*
9-1-28	Snap Ring, .074 Thick	209876	*	*
9-2-2	Snap Ring, .062 Thick	201395	*	*
9-2-2	Snap Ring, .065 Thick	201396	*	*
9-2-2	Snap Ring, .068 Thick	201397	*	*
9-2-2	Snap Ring, .071 Thick	201398	*	*
9-2-4	Snap Ring, .087 Thick	207969	*	*
9-2-4	Snap Ring, .090 Thick	207970	*	*
9-2-4	Snap Ring, .093 Thick	207971	*	*
9-2-4	Snap Ring, .096 Thick	207972	*	*
9-2-5	Baffle	209849	1	1
9.145 - TRANSMISSION MAIN SHAFT BEARING RETAINER AND ADAPTER				
9-1-31	Retainer, Standard	209850	1	1
9-1-22	Bolt, 7/16"-14 x 7/8" Hx. Hd.	212593	3	3
9-1-22	Bolt, 7/16"-14 x 2 1/2" Hx. Hd.	200866	1	1
9-1-23	Lockwasher, 7/16" Ext. Tooth	637	4	4
9-1-30	Gasket, Standard	209851	1	1
9-1-33	Oil Seal, Standard	201311	1	1
9-2-7	Adapter, Overdrive Housing	209852	1	1
9-2-6	Gasket, Overdrive Adapter to Transmission Case	209853	1	1
9.155 - TRANSMISSION COUNTERSHAFT GEAR CLUSTER				
9-1-15	Gear Cluster	209854	1	1
9-1-14	Thrustwasher, Front	209855	1	1
9-1-17	Thrustwasher, Rear	209856	1	1
9-1-16	Thrustwasher, Rear	209857	1	1
9.160 - TRANSMISSION COUNTERSHAFT GEAR BEARINGS				
9-1-20	Bearing (Roller)	201317	40	40
9-1-19	Spacer	209858	1	1
9-1-18	Washer	209859	2	2

TRANSMISSION AND CONTROLS

9

FIGURE NUMBER	GROUP, PART NAME and DESCRIPTION	PART NUMBER	USED PER CAR MODEL	
			513	514
9.165 - TRANSMISSION COUNTERSHAFT				
9-1-21	Countershaft	209860	1	1
9.170 - TRANSMISSION REVERSE IDLER GEAR				
9-1-27	Gear (incl. Bushing)	209861	1	1
9-1-26	Bushing	209862	1	1
9.175 - TRANSMISSION REVERSE IDLER GEAR SHAFT				
9-1-25	Shaft	209863	1	1
9-1-24	Lockplate	209864	1	1
9.180 - TRANSMISSION SHIFTING LEVER - INNER				
9-1-51	Lever and Shaft, Second and High	209865	1	1
9-1-39	Lever and Shaft, Low and Reverse	209866	1	1
9-1-53	Pin	201327	2	2
9-1-50	Seal	200903	2	2
9.185 - TRANSMISSION SHIFTING FORK AND SHOE				
9-1-52	Fork, Second and High	209867	1	1
9-1-38	Shoe, Low and Reverse	209868	1	1
9.190 - TRANSMISSION SHIFTING LEVER POPPET BALL				
9-1-46	Ball	201329	2	2
9-1-40	Spring	212314	1	1
9-1-41	Pin (Grooved)	204846	1	1
9-1-47	Sleeve (not marked) 1.299 Long	201331	*	*
9-1-47	Sleeve (marked "A") 1.295 Long	201332	*	*
9-1-47	Sleeve (marked "B") 1.291 Long	201333	*	*
9-1-47	Sleeve (marked "C") 1.287 Long	201334	*	*
9-1-47	Sleeve (marked "D") 1.303 Long	201335	*	*
9.195 - TRANSMISSION SHIFTING LEVER - OUTER				
9-1-49	Lever, Second and High (incl. Insulator)	209869	1	1
9-1-45	Lever, Low and Reverse (incl. Insulator)	209870	1	1
9-1-42	Flatwasher, 5/16"	201339	2	2
9-1-43	Lockwasher, 5/16" Med.	240	2	2
9-1-44	Nut, 5/16"-18 Hx.	205	2	2
9-1-48	Insulator	201340	2	2
9.200 - TRANSMISSION OVERDRIVE HOUSING				
9-2-35	Housing	207321	1	1
9-2-36	Bolt	200866	4	4
9-2-37	Lockwasher	193	4	4
9-2-34	Gasket (to Adapter)	201310	1	1
9-2-38	Plug, Filler and Drain	121	2	2
NOTE: For Transmission Main Shaft Bearing Retainer and Adapter See Group 9.145.				

TRANSMISSION AND CONTROLS

FIGURE NUMBER	GROUP, PART NAME and DESCRIPTION	PART NUMBER	USED PER CAR MODEL	
			513	514
	9.205 - TRANSMISSION OVERDRIVE GEAR AND BLOCKING RING - STATIONARY			
9-2-8	Gear and Blocking Ring	200870	1	1
	Blocking Ring	200876	1	1
	9.210 - TRANSMISSION OVERDRIVE STATIONARY GEAR			
9-2-11	Gear (incl. Shifting Collar and Snap Rings)	200871	1	1
	Snap Ring (1 15/32" I.D.)	200872	2	2
	Gear	200873	1	1
	Collar	200874	1	1
9-2-28	Pawl	204847	1	1
	9.215 - TRANSMISSION OVERDRIVE STATIONARY GEAR COVER PLATE			
9-2-9	Plate	200877	1	1
9-2-10	Snap Ring, .0625 Thick	200878	*	*
9-2-10	Snap Ring, .0705 Thick	200879	*	*
9-2-10	Snap Ring, .0665 Thick	200880	*	*
	9.220 - TRANSMISSION OVERDRIVE STATIONARY GEAR PINION CAGE			
9-2-12	Cage (incl. Pinions, Shafts, Pins, Oil Ring, Bearing Rollers and Spacers) . .	200882	1	1
	9.225 - TRANSMISSION OVERDRIVE FREE WHEELING CAM			
9-2-13	Cam (incl. Rollers, Retainer, Spring and Cage Clips)	200883	1	1
9-2-14	Clip (Cam to Shaft)	200884	1	1
	9.230 - TRANSMISSION OVERDRIVE FREE WHEELING CAM BEARING			
9-2-16	Bearing, Roller	200885	12	12
9-2-15	Retainer	200886	1	1
9-2-17	Spring	200888	2	2
	9.235 - TRANSMISSION OVERDRIVE MAIN SHAFT			
9-2-32	Shaft (incl. Ring Gear and Snap Ring)	207322	1	1
9-2-46	Oil Seal	201311	1	1
	9.240 - TRANSMISSION OVERDRIVE MAIN SHAFT BEARING			
9-2-51	Bearing	200893	1	1
9-2-45	Snap Ring, .062 Thick (Front and Rear)	201395	*	*
9-2-45	Snap Ring, .065 Thick (Rear)	201396	*	*
9-2-45	Snap Ring, .068 Thick (Rear)	201397	*	*
9-2-45	Snap Ring, .071 Thick (Rear)	201398	*	*
	9.245 - TRANSMISSION OVERDRIVE RING GEAR			
9-2-31	Ring Gear	208325	1	1
9-2-33	Snap Ring, .062 Thick	200892	1	1
	9.250 - TRANSMISSION OVERDRIVE SHIFT FORK			
9-2-26	Fork	204848	1	1
9-2-22	Rail	209871	1	1
9-2-27	Guide	200901	1	1

TRANSMISSION AND CONTROLS

FIGURE NUMBER	GROUP, PART NAME and DESCRIPTION	PART NUMBER	USED PER CAR MODEL	
			513	514
	9.250 - TRANSMISSION OVERDRIVE SHIFT FORK (Cont'd)			
9-2-25	"C" Washer	204850	1	1
9-2-24	Cup	204855	1	1
	9.255 - TRANSMISSION OVERDRIVE SHIFT CONTROL SHAFT			
9-2-21	Shaft	200902	1	1
9-2-54	Pin, 5/32" x 1 1/4" Taper	201327	1	1
9-2-23	Spring, Lock-Up	204856	1	1
9-2-18	Spring, Retractor	200900	1	1
9-2-20	Oil Seal	200903	1	1
	9.260 - TRANSMISSION OVERDRIVE CONTROL SHAFT LEVER			
9-2-19	Lever	207978	1	1
	Flatwasher	201339	1	1
	Lockwasher, 5/16" Med.	240	1	1
	Nut, 5/16"-18 Hx.	205	1	1
	9.265 - TRANSMISSION OVERDRIVE GOVERNOR			
9-2-40	Governor	212385	1	1
	Screw, Terminal, No. 8-32 x 1/4" Rd. Hd. Sl.	357	1	1
	Lockwasher, No. 8 Int. Tooth	273	1	1
9-2-42	Pinion (15 Teeth)	200909	1	1
9-2-43	Gear (7 Teeth)	200910	1	1
9-2-39	Sleeve	200905	1	1
9-2-41	Retainer	200906	1	1
	Boot (Rubber)	203101	1	1
	9.270 - TRANSMISSION OVERDRIVE CONTROL			
	Control	204248	1	1
	Lockwasher, 1/2" Int. Tooth	642	1	1
	Jam Nut, 1/2"-20 Hx.	632	1	1
	Bolt	207263	1	1
	Sleeve	207264	1	1
	Flatwasher, 1/4"	243	1	1
	Lockwasher, 1/4"	190	1	1
	Nut, 1/4"-28 Hx.	261	1	1
	Knob and Wire	212953	1	1
	Grommet	206637	1	1
	Clip (on Steering Gear Housing Bolt)	207920	1	1
	9.275 - TRANSMISSION OVERDRIVE CONTROL BRACKET			
	Bracket (Chrome) (at Inst. Board)	212651	1	1
	Screw, No. 10-24 x 7/16" Rd. Hd. Cr. Rec.	706	1	1
	Nut	212368	1	1
	Bracket (at Transmission)	208061	1	1
	9.282 - SPEEDOMETER CABLE			
	Cable and Housing (WO/OD) (56 1/2" Long)	203520	1	1
	Cable and Housing (W/OD) (54 1/2" Long)	212369	1	1
	Bolt, 1/4"-20 x 9/16" Rd. Hd. Sl.	440	1	1
	Lockwasher, 1/4" Med.	190	1	1
	Gasket	200923	1	1

TRANSMISSION AND CONTROLS

FIGURE NUMBER	GROUP, PART NAME and DESCRIPTION	PART NUMBER	USED PER CAR MODEL	
			513	514
	9.282 - SPEEDOMETER CABLE (Cont'd)			
	Grommet (WO/OD)	208062	1	1
	Retainer	208063	2	2
	Screw, No. 10-12 x 3/8" Rd. Hd. Cr. Rec. Tap	609	2	2
	Grommet (in Cowl Panel) (W/OD)	212373	1	1
	Clip (on Floor Pan) (WO/OD)	205932	1	1
	Clip (to Overdrive Control)	203018	1	1
	Clip (on Cowl Panel) (W/OD)	208612	1	1
	9.284 - SPEEDOMETER CABLE CORE			
	Core (WO/OD) (56" Long)	203522	1	1
	Core (W/OD) (54" Long)	212370	1	1
	9.286 - SPEEDOMETER DRIVE GEAR AND PINION			
9-1-32	Gear, Standard	209872	1	1
9-2-44	Gear, Overdrive	200920	1	1
	Pinion (16 Teeth) (4.1 Axle Ratio)	212360		1
	Pinion (18 Teeth) (4.55 Axle Ratio)	212361	1	1
	9.300 - TRANSMISSION GEAR SHIFT LEVER			
9-3-24	Lever, Upper	207985	1	1
9-3-27	Retainer	207986	1	1
9-3-22	Pivot Pin	207987	2	2
9-3-25	Spring, Pivot Pin	207988	1	1
9-3-23	Knob	212424	1	1
	9.310 - TRANSMISSION GEAR SHIFT SHAFT			
9-3-18	Shaft, Upper	207990	1	1
9-3-26	Spring, Shaft End to Lever	207991	1	1
9-3-21	Guide	207992	1	1
9-3-20	Bracket (to Steering Gear Jacket)	207993	1	1
9-3-19	Bolt with L/W	208646	2	2
9-3-16	Clamp (Upper to Lower Shaft)	207994	1	1
9-3-17	Bolt, 5/16"-24 x 1 1/4" Hx. Hd.	418	2	2
9-3-15	Lockwasher, 5/16" Ext. Tooth	348	2	2
9-3-14	Nut, 5/16"-24 Hx.	189	2	2
9-3-8	Shaft, Lower (incl. Cam) (9 1/8" Long)	212362	1	1
9-3-8	Shaft, Lower (incl. Cam) (10 1/8" Long)	212821	1	1
	9.320 - TRANSMISSION GEAR SHIFT LEVER - LOWER			
9-3-29	Lever, Low and Reverse	212363	1	1
9-3-9	Spring, Lever to Cam	207997	1	1
9-3-13	Dust Seal	207266	1	1
9-3-6	Lever, Second and High	212364	1	1
9-3-7	Washer, Lever to Cam (Felt)	208000	1	1
9-3-3	Insulator, Lever to Rod	206649	2	2
9-3-30	Housing	208001	1	1
9-3-10	Cover	208002	1	1
9-3-11	Bolt with L/W	208647	4	4
9-3-12	Plug	205453	1	1
9-3-31	Clamp	208003	1	1
9-3-33	Bolt, 5/16"-24 x 1 1/4" Hx. Hd.	418	2	2
9-3-32	Lockwasher, 5/16" Ext. Tooth	348	2	2

