

FIGURE 15-1—REAR WHEEL BRAKE—EXPLODED VIEW

KEY	PART NAME	GROUP
1	Spring, Pull-Back, Cylinder End	15.004
2	Link, Hand Brake Operating Lever	15.008
3	Cylinder	15.012
4	Plate Assembly, Support.	15.002
5	Clip, Shoe Hold Down	15.004
6	Lever, Hand Brake Operating	15.008
7	Springwasher, Hand Brake Lever	15.008
8	Retainer, Hand Brake Lever	15.008
9	Shoe Assembly (serviced in Sets)	15.004
10	Lining Set	15.006
11	Spring, Pull-Back, Anchor End	15.004

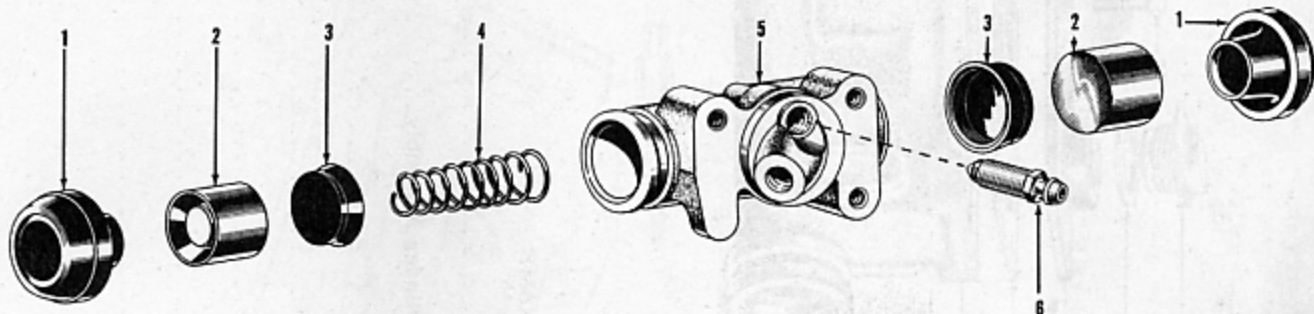


FIGURE 15-2—FRONT WHEEL BRAKE CYLINDER—EXPLODED VIEW

KEY	PART NAME	GROUP
1	Boot	15.020
2	Piston	15.020
3	Cup	15.020
4	Spring, Return	15.020
5	Body (not serviced separately)	
6	Bleeder Valve	15.016

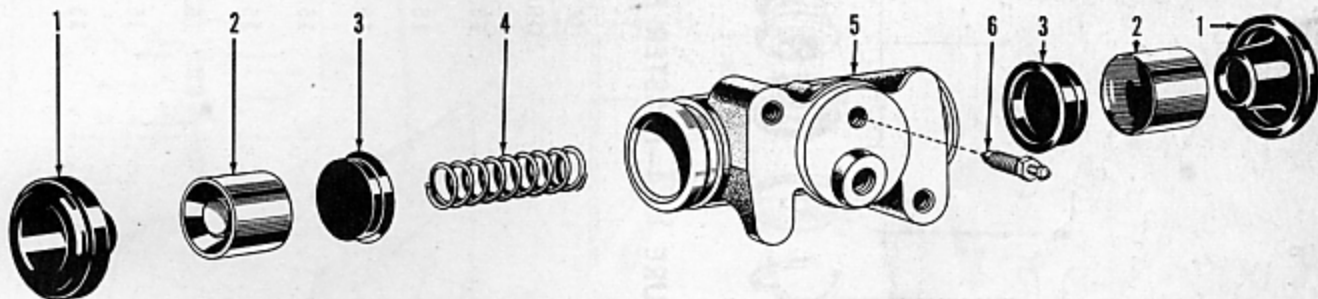


FIGURE 15-3—REAR WHEEL BRAKE CYLINDER—EXPLODED VIEW

KEY	PART NAME	GROUP
1	Boot	15.030
2	Piston	15.030
3	Cup	15.030
4	Spring, Return	15.030
5	Body (not serviced separately)	
6	Bleeder Valve	15.016

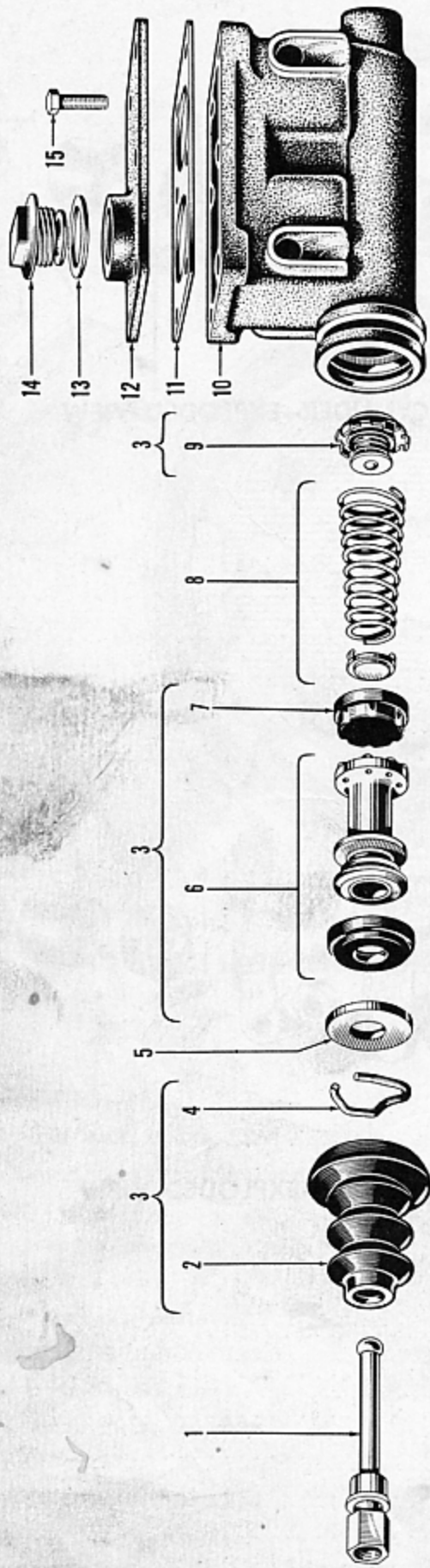


FIGURE 15-4—MASTER BRAKE CYLINDER—EXPLODED VIEW

KEY	PART NAME	GROUP	KEY	PART NAME	GROUP
1	Rod, Piston Push.	15.035	9	Check Valve	15.035
2	Boot	15.035	10	Serviced only in Master Cylinder Assembly	15.035
3	Repair Kit	15.040	11	Gasket, Cover.	15.035
4	Retainer, Piston Stop.	15.035	12	Cover	15.035
5	Plate, Piston Stop	15.035	13	Gasket, Filler Hole Plug.	15.035
6	Piston Assembly.	15.035	14	Plug, Filler Hole.	15.035
7	Cup, Piston	15.035	15	Bolt, Cover	15.035
8	Spring Assembly.	15.035			

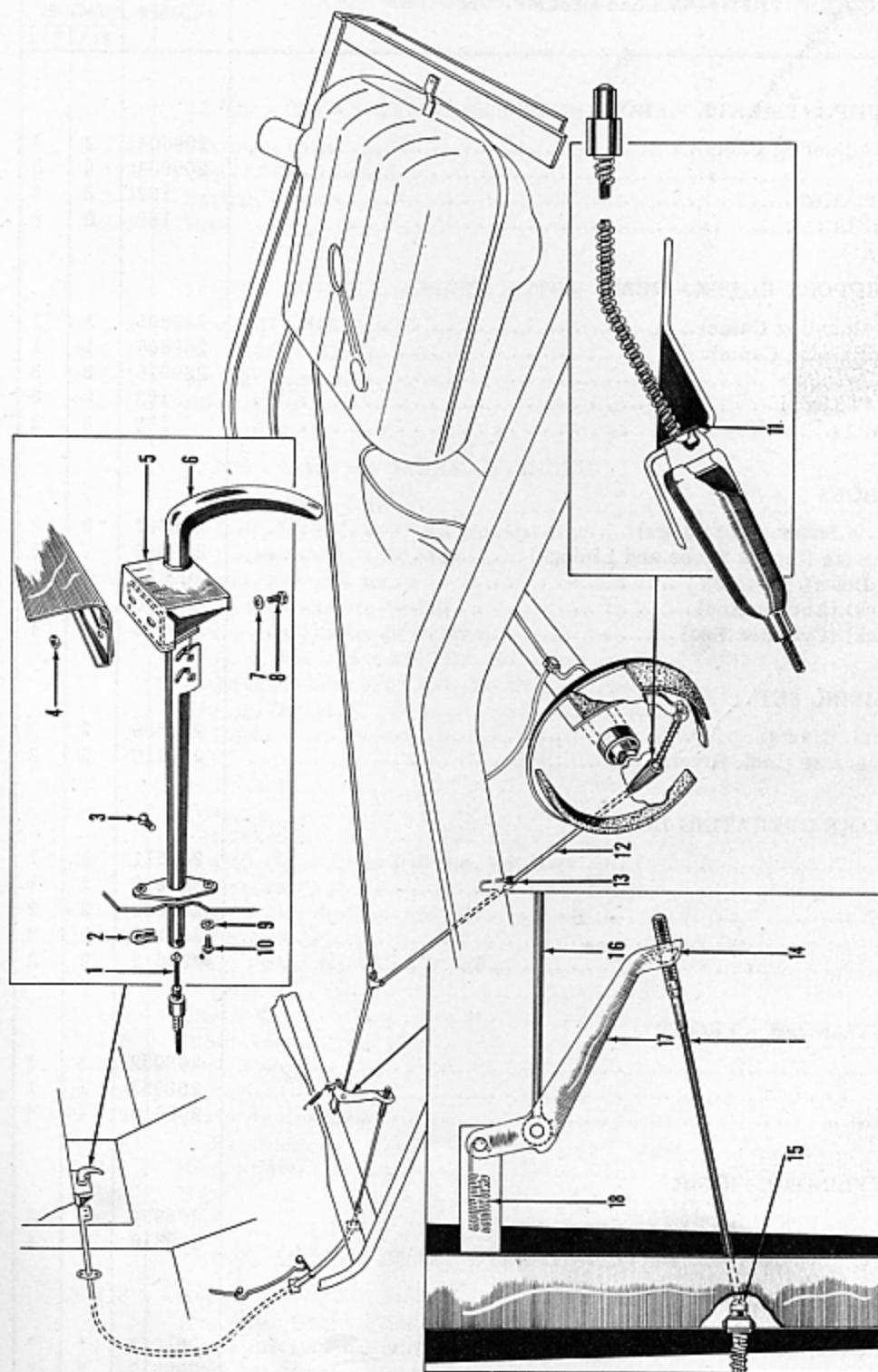


FIGURE 15-5—HAND BRAKE LINKAGE—EXPLODED VIEW

KEY	PART NAME	GROUP	KEY	PART NAME	GROUP
1	Cable, Hand Brake Front	15.218	10	Bolt, Handle to Cowl	15.200
2	Clip, Cable-to Handle	15.218	11	Retainer (Clip), Rear Cable	15.236
3	Pin, Stop	15.200	12	Cable, Rear	15.236
4	Nut, Panel to Instrument Board	15.200	13	Guide, Rear Cable	15.236
5	Panel, Hand Brake Cover	15.200	14	Nut, Front Cable to Equalizing Lever	15.218
6	Handle, Hand Brake	15.200	15	Clip, Front Cable to Frame	15.218
7	Lockwasher, Panel to Instrument Board	15.200	16	Rod, Equalizing Lever to Rear Cable	15.230
8	Bolt, Panel to Instrument Board	15.200	17	Lever, Equalizing	15.230
9	Lockwasher, Handle to Cowl	15.200	18	Spring, Return	15.230

FIGURE NUMBER	GROUP, PART NAME and DESCRIPTION	PART NUMBER	USED PER CAR MODEL	
			513	514
	15.000 - BRAKE SUPPORT PLATE - FRONT			
	Plate, Front (incl. Adjusting Cams)	209604	2	2
	Bolt.	209964	8	8
	Lockwasher, 3/8" Med	192	8	8
	Nut, 3/8"-24 Hx. Lt	188	8	8
	15.002 - BRAKE SUPPORT PLATE - REAR			
	Plate, Right (incl. Adjusting Cams)	209605	1	1
15-1-4	Plate, Left (incl. Adjusting Cams)	209606	1	1
	Bolt.	209916	8	8
	Lockwasher, 3/8" Med	192	8	8
	Nut, 3/8"-24 Hx. Lt.	188	8	8
	15.004 - BRAKE SHOES			
15-1-9	Shoe Set, Std. (incl. 4 Shoes and Linings)	209607	2	2
	Shoe Set, .030 Oversize (incl. 4 Shoes and Linings)	209608	2	2
15-1-5	Clip (Shoe Hold Down)	209614	8	8
15-1-11	Spring (Pull Back) (Anchor End)	209615	4	4
15-1-1	Spring (Pull Back) (Cylinder End)	209788	4	4
	15.006 - BRAKE LINING SET			
15-1-10	Lining Set, Std. (incl. Rivets)	209609	2	2
	Lining Set, .030 Oversize (incl. Rivets)	209610	2	2
	15.008 - HAND BRAKE OPERATING LEVER			
	Lever, Right	209611	1	1
15-1-6	Lever, Left	209612	1	1
15-1-8	Retainer	200192	2	2
15-1-7	Springwasher	200193	2	2
15-1-2	Link	209613	2	2
	15.010 - BRAKE CYLINDER - FRONT			
	Cylinder, Right	208952	1	1
	Cylinder, Left	208953	1	1
	Bolt with L/W	209616	4	4
	15.012 - BRAKE CYLINDER - REAR			
15-1-3	Cylinder	208954	2	2
	Bolt with L/W	209616	4	4
	15.014 - BRAKE CYLINDER REPAIR KIT			
	Repair Kit, Front	201043	*	*
	Repair Kit, Rear	209617	*	*
	15.016 - BRAKE CYLINDER BLEEDER VALVE			
15-3-6	Bleeder Valve	201048	4	4

BRAKES AND CONTROLS

15

FIGURE NUMBER	GROUP, PART NAME and DESCRIPTION	PART NUMBER	USED PER CAR MODEL	
			513	514
15.020 - BRAKE CYLINDER PISTON - FRONT WHEEL				
15-2-2	Piston (1" Dia.)	201049	4	4
15-2-3	Cup (1" Dia.)	201051	4	4
15-3-4	Spring, Return.	201055	2	2
15-2-1	Boot	201053	4	4
15.030 - BRAKE CYLINDER PISTON - REAR WHEEL				
15-3-2	Piston (13/16" Dia.)	209618	4	4
15-3-3	Cup (13/16" Dia.)	209619	4	4
15-3-4	Spring, Return.	209998	2	2
15-3-1	Boot	209999	4	4
15.035 - MASTER BRAKE CYLINDER				
	Cylinder (less Fitting)	213287	1	1
	Bolt, 3/8"-24 x 3" Fl. Hd. Cr. Rec	939	2	2
	Lockwasher, 3/8" Med	192	2	2
	Nut, 3/8"-24 Hx.	290	2	2
	Strap (Cylinder to Pedal).	209965	1	1
	Bracket (Cylinder to Frame)	209966	1	1
	Bolt, 3/8"-24 x 3/4" Hx. Hd.	439	1	1
	Lockwasher, 3/8" Ext. Tooth.	291	1	1
	Fitting, Outlet.	212731	1	1
	Gasket.	201059	1	1
	Bolt.	201058	1	1
	Gasket.	201060	1	1
15-4-12	Cover	203329	1	1
15-4-11	Gasket	203330	1	1
15-4-15	Bolt, 1/4"-20 x 3/4" Hx. Hd. Tap	701	6	6
	Gasket, Bolt	203332	6	6
15-4-14	Plug, Filler Hole (1 1/4"-18).	203333	1	1
15-4-13	Gasket	203334	1	1
	Plug, Filler Hole (1 5/8"-18).	201620	1	1
	Gasket.	201621	1	1
15-4-9	Check Valve	201622	1	1
15-4-6	Piston	203335	1	1
15-4-7	Cup, Piston.	201624	1	1
15-4-8	Spring	201623	1	1
15-4-5	Plate, Piston Stop	201626	1	1
15-4-4	Retainer.	201627	1	1
15-4-1	Rod, Piston Push.	203336	1	1
15-4-2	Boot	203337	1	1
15.040 - MASTER BRAKE CYLINDER REPAIR KIT AND FLUID				
15-4-3	Repair Kit	203338	1	1
	Hydraulic Brake Fluid (Qt.)	202152	*	*
	Hydraulic Brake Fluid (Gal.)	202153	*	*
	Hydraulic Brake Fluid (5 Gal.)	202155	*	*
15.060 - MASTER BRAKE CYLINDER TUBE (CYLINDER TO FRAME TEE)				
	Tube (incl. Nuts) (up to Serial 514-2561)	212732		1
	Tube (incl. Nuts) (after Serial 514-2561)	209967	1	1
	Nut, 7/16"-24 Hx. x 1/4" Inv. Fl. Tube	202143	2	2

*As Required

BRAKES AND CONTROLS

FIGURE NUMBER	GROUP, PART NAME and DESCRIPTION	PART NUMBER	USED PER CAR MODEL	
			513	514
	15.062 - MASTER BRAKE CYLINDER FRAME TEE			
	Tee (4-Way) (up to Serial 514-2561)	208480		1
	Fitting (Master Cylinder Tube to Frame Tee) (up to Serial 514-2561).	212733		1
	Tee (5-Way) (from Serial 514-2561 to 513-11481, 514-18853).	212734	1	1
	Tee (5-Way) (after Serial 513-11481, 514-18853).	212878	1	1
	Bolt, 5/16"-12 x 5/8" Hx. Hd. Tap	284	1	1
	15.064 - FRONT BRAKE TUBE			
	Tube, Right (incl. Nuts).	209968	1	1
	Tube, Left (incl. Nuts)	209969	1	1
	Nut, 3/8"-24 Hx. x 3/16" Inv. Fl. Tube	202142	2	2
	15.068 - FRONT BRAKE HOSE			
	Hose	201086	2	2
	Clip, Spring	201071	2	2
	Gasket.	201087	2	2
	15.070 - REAR BRAKE TUBE (FRAME TEE TO REAR HOSE)			
	Tube (incl. Nuts)	209970	1	1
	Clip	208519	6	6
	Nut	202142	2	2
	15.074 - REAR BRAKE HOSE (BRAKE TUBE TO AXLE TEE)			
	Hose	201089	1	1
	Clip, Spring	201071	1	1
	Gasket.	201087	1	1
	15.076 - REAR AXLE BRAKE TUBE TEE			
	Tee.	201091	1	1
	Bolt, 1/4"-28 x 7/8" Hx. Hd.	303	1	1
	Lockwasher, 1/4" Lt	410	1	1
	15.078 - REAR AXLE BRAKE TUBE (AXLE TEE TO WHEEL CYLINDER)			
	Tube, Right (incl. Nuts).	209971	1	1
	Tube, Left (incl. Nuts)	209972	1	1
	Nut	202142	4	4
	Clip	212600	1	1
	Clip (to Axle Cover).	212848	2	2
	15.100 - MASTER CYLINDER OPERATING ROD			
	Rod.	209978	1	1
	Pin, 7/16" { to	203558	1	1
	Cotter Pin, 3/32". { Pedal }	791	1	1
	Jam Nut, 7/16"-20 Hx.	412	1	1
	15.102 - BRAKE PEDAL			
	Pedal.	209973	1	1
	Bushing	209974	2	2
	Bracket (on Crossmember)	209975	1	1

BRAKES AND CONTROLS

15

FIGURE NUMBER	GROUP, PART NAME and DESCRIPTION	PART NUMBER	USED PER CAR MODEL	
			513	514
	15.102 - BRAKE PEDAL (Cont'd)			
	Bolt, 3/8"-24 x 3/4" Hx. Hd.	439	2	2
	Lockwasher, 3/8" Ext. Tooth.	291	2	2
	Nut, 3/8"-24 Hx.	188	2	2
	Pin { Pedal to	209976	1	1
	Clip { Bracket }	941	1	1
	Spring, Pedal Return	208485	1	1
	Pad (Black).	204232	1	1
	 15.112 - BRAKE PEDAL FLOOR PLATE			
	Plate, Upper (9" Long)	212864	1	1
	Plate, Cover (9 3/4" Long)	209803	1	1
	Plate, Lower (incl. Bumper)	209804	1	1
	Screw, No. 10-12 x 1/2" Washer Head.	205680	5	5
	Screw, No. 10-12 x 7/8" Ov. Hd.(Chrome).	630	2	2
	Washer, No. 8 Finish(Chrome)	202262	2	2
	Bumper (Rubber)	209805	2	2
	Dust Seal (Felt and Steel) (2" x 2 1/2").	212010	1	1
	Plate, Upper (9" Long)	212867	1	1
	Plate, Cover (10" Long)	212868	1	1
	Plate, Lower (incl. Bumper)	212869	1	1
	Screw, No. 10-12 x 1/2" Washer Head.	205680	5	5
	Screw, No. 10-12 x 7/8" Ov. Hd.(Chrome).	630	2	2
	Washer, No. 8 Finish(Chrome)	202262	2	2
	Bumper (Rubber)	212870	2	2
	Dust Seal (Felt and Steel) (2" x 3 1/8")	212865	1	1
	Dust Seal (Rubber) (3" Sq.)	212824	1	1
	Seal, Inner (7 3/4" Long - Straight).	209806	1	1
	Seal, Outer	209807	1	1
	Seal, Lower (9 7/8" Long - Straight).	209808	1	1
	 15.200 - HAND BRAKE HANDLE			
	Handle	209979	1	1
15-5-6	Handle (less Panel)	212885	1	1
15-5-10	Bolt, 1/4"-28 x 1/2" Hx. Hd. { To Cowl }	276	2	2
15-5-9	Lockwasher, 1/4" Int. Tooth	275	2	2
15-5-8	Bolt, 5/16"-24 x 5/8" Hx. Hd. { To Instrument }	274	2	2
15-5-7	Lockwasher, 5/16" Med Board }	240	2	2
15-5-4	Nut, 5/16"-24 Hx.	189	2	2
15-5-5	Panel, Cover.	212886	1	1
15-5-3	Pin, Stop	212887	1	1
	 15.218 - HAND BRAKE FRONT CABLE			
15-5-1	Cable.	209980	1	1
15-5-2	Clip (to Handle)	208490	1	1
15-5-15	Clip (to Frame)	208491	1	1
	Clip (to Frame)	212834	1	1
	Clip (to Clutch Housing)	212835	1	1
15-5-14	Nut	209981	1	1
	Clip (to Oil Line)	205427	1	1
	 15.230 - HAND BRAKE EQUALIZING LEVER			
15-5-17	Lever	209982	1	1
	Rod (Lever to Rear Cable) (19 1/2" Long)	212771	1	1

BRAKES AND CONTROLS

FIGURE NUMBER	GROUP, PART NAME and DESCRIPTION	PART NUMBER	USED PER CAR MODEL	
			513	514
15.230 - HAND BRAKE EQUALIZING LEVER (Cont'd)				
15-5-16	Rod (Lever to Rear Cable) (18" Long)	209983	1	1
	Clevis Pin, 5/16" x 31/32" (Lever to Frame)	416	1	1
	Clevis Pin, 5/16" x 13/16" (Rod to Lever)	201072	1	1
	Cotter Pin, 3/32"	791	2	2
	Locknut, 5/16"-24 Hx. Lt	189	2	2
15-5-18	Spring, Return	208496	1	1
15.236 - HAND BRAKE CABLE - REAR				
15-5-12	Cable.	209984	1	1
15-5-11	Retainer (or Clip)	208499	2	2
15-5-13	Guide	208500	2	2
	Bolt, 5/16"-18 x 5/8" Hx. Hd.	867	2	2