

FIGURE 18-1—HOOD LOCK MECHANISM—EXPLODED VIEW

KEY	PART NAME	GROUP	KEY	PART NAME	GROUP
1	Catch, Safety.	18.152	11	Plate Assembly, Hood Lock Latch . .	18.150
2	Pin, Safety Catch Pivot	18.152	12	Spring, Hood Lock Latch Plate. . . .	18.150
3	Plate and Nut	18.148	13	Nut, Hood Lock Latch Plate Mounting	18.150
4	Spring, Safety Catch.	18.152	14	Lockwasher, Hood Lock Latch Plate Mounting	18.150
5	Nut, Plate Mounting.	18.148	15	Spring, Release.	18.148
6	Lockwasher, Plate Mounting	18.148	16	Jamnut, Hood Lock Bolt	18.148
7	Flatwasher, Plate Mounting	18.148	17	Retainer, Release Spring	18.148
8	Bolt, Plate Mounting	18.148	18	Bolt, Hood Lock	18.148
9	Bolt, Hood Lock Latch Plate Mounting	18.150			
10	Flatwasher, Hood Lock Latch Plate Mounting	18.150			

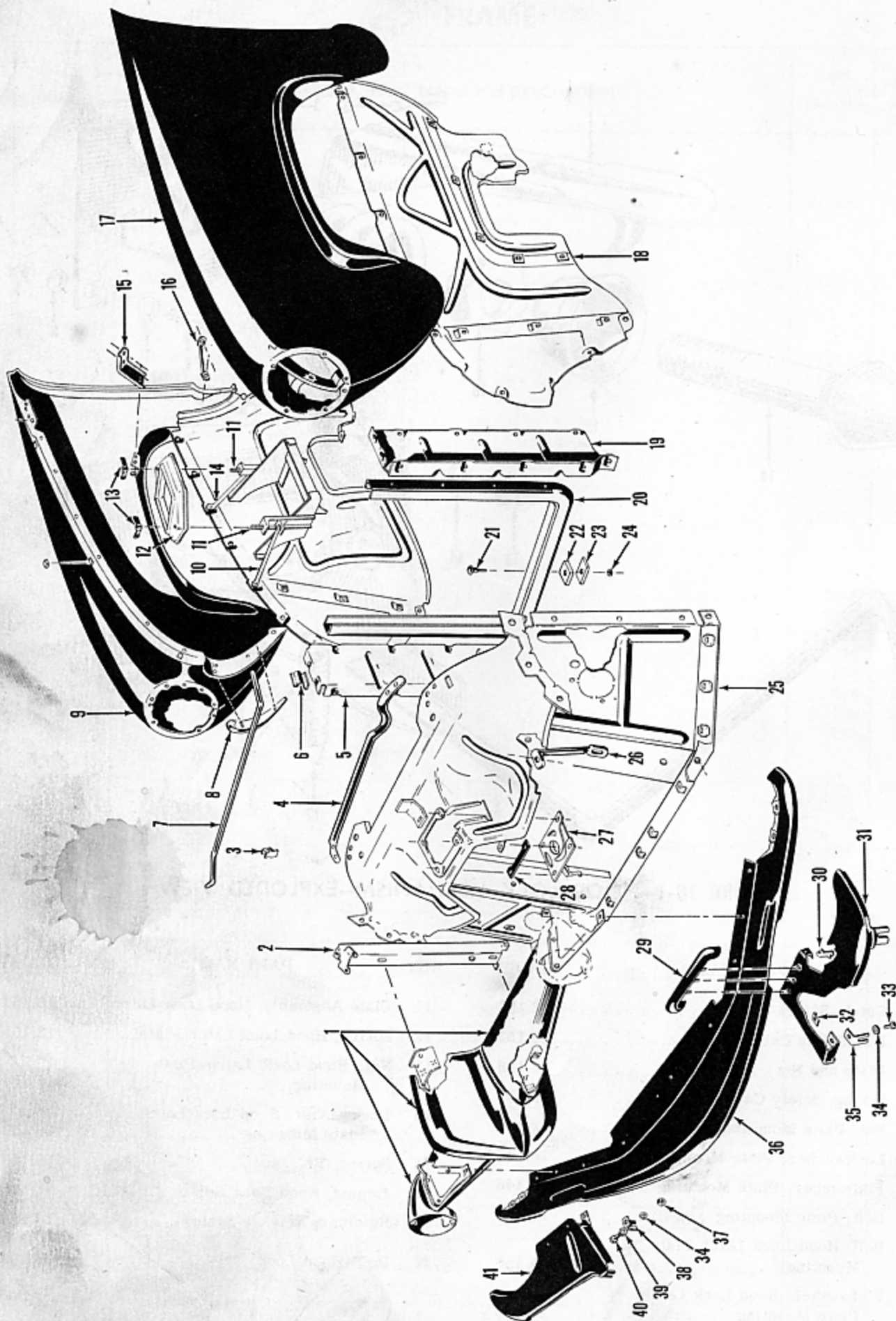


FIGURE 18-2—FRONT END SHEET METAL—EXPLODED VIEW

FIGURE 18-2—FRONT END SHEET METAL—EXPLODED VIEW

KEY	PART NAME	GROUP	KEY	PART NAME	GROUP
1	Not Serviced separately, see Figure 30-1.		22	Insulator, Radiator Cradle	6.455
2	Support, Grille Support Center.	6.490	23	Spacer, Radiator Cradle	6.455
3	Clip, Hood Prop (to Stow-Away Prop)	18.250	24	Locknut, Radiator Cradle	6.455
4	Reinforcement, Upper Radiator Support.	18.147	25	Radiator Shroud Assembly	6.480
5	Support, Radiator Shroud, Right.	6.480	26	Support, Hood Lock Latch.	18.147
6	Bracket, Hood Prop.	18.250	27	Plate, Hood Lock Latch	18.150
7	Prop, Hood.	18.250	28	Anti-Squeak, Hood Lock Latch Plate.	18.150
8	Moulding, Front Fender, Right.	18.002	29	Bumper, Front Bumper Support Cover	20.210
9	Fender, Front Right.	18.000	30	Bracket, Front Bumper Support to Support Cover	20.210
10	Brace, Battery Support, Front.	7.500	31	Cover, Front Bumper Support, Left	20.210
11	Bolt, Battery Retainer Mounting	7.500	32	Speednut, Front Bumper Support Cover and Bracket.	20.210
12	Retainer, Battery	7.500	33	Screw, Bumper Support Cover and Bracket	20.210
13	Wing Nut, Battery Mounting Retainer	7.500	34	Flatwasher, Front Bumper Support Cover and Bracket	20.210
14	Brace, Battery Support, Rear	7.500	35	Bracket, Front Bumper Support Cover, Outer.	20.210
15	Bracket, Fender Bracket to Cowl, Right	18.000	36	Panel, Front Stone Deflector	6.492
16	Brace, Front Fender to Cowl.	18.000	37	Nut, Front Bumper Support Cover	20.210
17	Fender, Front, Left.	18.000	38	Bracket, Front Bumper Support Cover, Inner.	20.210
18	Shield, Front Fender Splash, Left.	18.010	39	Lockwasher, Front Bumper Support Cover.	20.210
19	Support, Radiator Shroud, Left.	6.480	40	Bolt, Front Bumper Support Cover.	20.210
20	Cradle, Radiator.	6.455	41	Cover, Front Bumper Support, Right.	20.210
21	Bolt, Radiator Cradle to Frame.	6.455			

FENDERS AND HOOD

FIGURE NUMBER	GROUP, PART NAME and DESCRIPTION	PART NUMBER	USED PER CAR MODEL	
			513	514
	18.000 - FRONT FENDERS			
18-2-9	Fender, Right (incl. Seals)	212016	1	1
18-2-17	Fender, Left (incl. Seals)	212017	1	1
	Bolt, 5/16"-18 x 11/16" Hx. Hd { to	397	6	6
	Lockwasher, 5/16" Ext. Tooth { Cowl }	348	6	6
	Screw { Stone Shield } <i>207542</i>	207549	4	4
	Speednut { to Fender }	212825	4	4
	Tie Brace (Fender to Fender)	212018	1	1
	Anti-Squeak (Tie Brace to Fender)	201806	2	2
	Seal (Fender to Cowl)	212020	1	1
18-2-16	Brace (to Cowl)	212710	2	2
	Bolt, 1/4"-20 x 5/8" Hx. Hd. {	257	4	4
	Lockwasher, 1/4" Int. Ext. Tooth { to	400	4	4
	Nut, 1/4"-20 Hx. Lt { Cowl	203	2	2
	Bolt, 5/16"-18 x 3/4" Hx. Hd. { and	183	4	4
	Lockwasher, 5/16" Int. Ext. Tooth { Fenders }	348	4	4
	Nut, 5/16"-18 Hx. {	205	2	2
18-2-15	Bracket, Cowl, Right { to Fender }	212711	1	1
	Bracket, Cowl, Left { Bracket }	212712	1	1
	Bolt, 1/4"-20 x 5/8" Hx. Hd	257	8	8
	Lockwasher, 1/4" Int. Ext. Tooth	400	8	8
	Flatwasher, 5/16" Med.	344	4	4
	Nut, 1/4"-20 Hx. Lt	203	8	8
	18.002 - FRONT FENDER MOULDING			
	Moulding, Right (incl. Studs)	212023	1	
	Moulding, Left (incl. Studs)	212024	1	
18-2-8	Moulding, Right (Chrome) (incl. Studs)	212025		1
	Moulding, Left (Chrome) (incl. Studs)	212026		1
	Lockwasher, No. 10 Int. Ext. Tooth	292	4	4
	Nut, No. 10-24 Hx	378	4	4
	18.010 - FRONT FENDER SPLASH SHIELD			
30-1-41	Shield, Right	212027	1	1
18-2-18	Shield, Left (incl. Seal)	212028	1	1
	Screw { <i>207542</i>	207549	8	8
	Speednut { to	212825	8	8
	Bolt, 5/16"-12 x 3/4" Hx. Hd. Tap { Fender }	445	12	12
	Flatwasher, 5/16" Sm. {	225	2	2
	Speednut {	206763	12	12
	Screw, 1/4"-20 x 1" Hx. Hd. { Access Cover	207	2	2
	Flatwasher, 1/4" Sm { and Left	243	2	2
	Spacer, 2" Sq. x 1/4" { Splash Shield	212792	1	1
	Spacer, 1 1/4" Dia. x 1/4" { to Dash	212584	2	2
	Locknut { Support }	205647	2	2
	Seal (to Dash)	212029	2	2
30-1-39	Access Cover (Tappet Access)	209977	1	1
	Screw	207549	5	5
	Speednut	212825	5	5
	Anti-Squeak (Upper) { Access Cover }	212030	1	1
	Anti-Squeak (Front) { to Splash Shield }	212031	1	1
	18.100 - HOOD			
30-1-11	Hood	212032	1	1
	Bumper (on Fenders)	212033	6	6

FENDERS AND HOOD

18

FIGURE NUMBER	GROUP, PART NAME and DESCRIPTION	PART NUMBER	USED PER CAR MODEL	
			513	514
			18.100 - HOOD (Cont'd)	
	Bumper (Front Cross Reinforcement) (Push-On Type) (up to Serial 514-2326) <i>use # 212659</i>	212034		2
	Bumper (Bolt-On Type) (after Serial 514-2326)	212659	2	2
	Bolt	212660	2	2
	Lockwasher, 1/4" Ext. Tooth	370	2	2
	Jam Nut, 1/4"-20 Hx.	811	4	4
	Bumper (Rear Cross Brace to Hood)	212778	5	5
	Anti-Squeak (Hood Rear Cross Brace)	212851	1	1
	Anti-Squeak (Hood Rear Cross Brace, Center)	212036	1	1
	Anti-Squeak (Hood Rear Cross Brace, Hinge)	212037	2	2
	Moulding, Right	212801	1	
	Moulding, Left	212802	1	
	Moulding, Right (Chrome)	212803		1
	Moulding, Left (Chrome)	212804		1
	Screw with L/W. { for Mouldings	208647	8	8
	Spacer (Rubber). { with Threaded	212038	8	8
	Spacer (Steel) { Mounting Holes	202293	8	8
	Screw, No. 10-24 x 7/16" Pan { for Mouldings			
	Hd. Cr. Rec. Tap { with Unthreaded	985	8	8
	Lockwasher, No. 10 Int. Ext. Tooth. { Mounting Holes	292	8	8
18.110 - HOOD ORNAMENT				
30-10-13	Ornament	212041	1	1
	Bolt, 1/4"-20 x 1/2" Hx. Hd.	179	1	1
	Lockwasher, 1/4" Int. Ext. Tooth	370	1	1
	Stud	208553	2	2
	Lockwasher, 1/4" Int. Ext. Tooth	370	2	2
	Nut, 1/4"-20 Hx.	203	2	2
	Spring (Ring to Body) (.014 Thick)	212042	*	*
	Nose	212044	1	1
	Drive Screw, No. 6 Fl. Hd.	209642	1	1
	Ring	212045	1	1
18.135 - HOOD NAME PLATE				
	Plate, Name "Henry J"	212047	1	1
	Speednut	212048	3	3
18.147 - HOOD LOCK LATCH SUPPORT PLATE (OR RADIATOR SHROUD UPPER BAFFLE)				
30-1-43	Plate	212049	1	1
	Reinforcement, Center	212654	1	1
18-2-26	Support	212836	2	2
	Bolt, 1/4"-20 x 5/8" Hx. Hd. { Support	257	2	2
	Lockwasher, 1/4" Ext. Tooth. { Plate to	370	2	2
	Flatwasher, 1/4" Sm. { Center	243	2	2
	Nut, 1/4"-20 Hx. { Support	203	2	2
18-2-4	Reinforcement, Upper Radiator Support	212912	1	1
	Bolt, 1/4"-20 x 1/2" Hx. Hd.	179	4	4
	Lockwasher, 1/4" Ext. Tooth.	370	4	4
	Nut, 1/4"-20 Hx.	203	4	4

*As Required

FENDERS AND HOOD

FIGURE NUMBER	GROUP, PART NAME and DESCRIPTION	PART NUMBER	USED PER CAR MODEL	
			513	514
	18.148 - HOOD LOCK BOLT PLATE (ON HOOD)			
18-1-3	Plate and Nut	203291	1	1
18-1-8	Bolt, 1/4"-20 x 1/2" Hx. Hd.	179	4	4
18-1-7	Flatwasher, 1/4" Sm.	243	4	4
18-1-6	Lockwasher, 1/4" Ext. Tooth.	370	4	4
18-1-5	Nut, 1/4"-20 Hx.	203	4	4
	Anti-Squeak	203292	2	2
18-1-18	Bolt.	203293	1	1
18-1-16	Jam Nut	632	1	1
18-1-15	Spring, Release.	213294	1	1
18-1-17	Retainer.	203295	1	1
	18.150 - HOOD LOCK LATCH (ON LATCH SUPPORT PLATE)			
18-1-11	Plate	212051	1	1
18-1-9	Bolt, 1/4"-28 x 5/8" Hx. Hd.	257	4	4
18-1-10	Flatwasher, 1/4" Sm.	243	4	4
18-1-14	Lockwasher, 1/4" Med.	370	4	4
18-1-13	Nut, 1/4"-20 Hx.	203	4	4
18-1-12	Spring	203297	1	1
18-2-28	Anti-Squeak	203292	2	2
	18.152 - HOOD LOCK SAFETY CATCH			
18-1-1	Catch.	212052	1	1
18-1-4	Spring	203299	1	1
18-1-2	Pin, Pivot.	203300	1	1
	18.200 - HOOD HINGES			
	Hinge, Right	212053	1	1
	Hinge, Left	212054	1	1
	Lockwasher, 1/4" Int. Ext. Tooth	400	*	*
	Flatwasher	300	*	*
	Nut, 1/4"-20 Hx.	203	*	*
	Bolt, 1/4"-20 x 5/8" Rd. Hd. Cr. Rec	505	*	*
	Lockwasher, 1/4" Med.	370	*	*
	Flatwasher, 1/4" Sm.	243	*	*
	Spring (Hold Down).	207930	2	2
	18.250 - HOOD PROP			
18-2-7	Prop	212055	1	1
18-2-6	Bracket (or Hinge) (Left Side).	212056	1	1
18-2-3	Clip (to Stow Away Prop) (Right Side).	212057	1	1