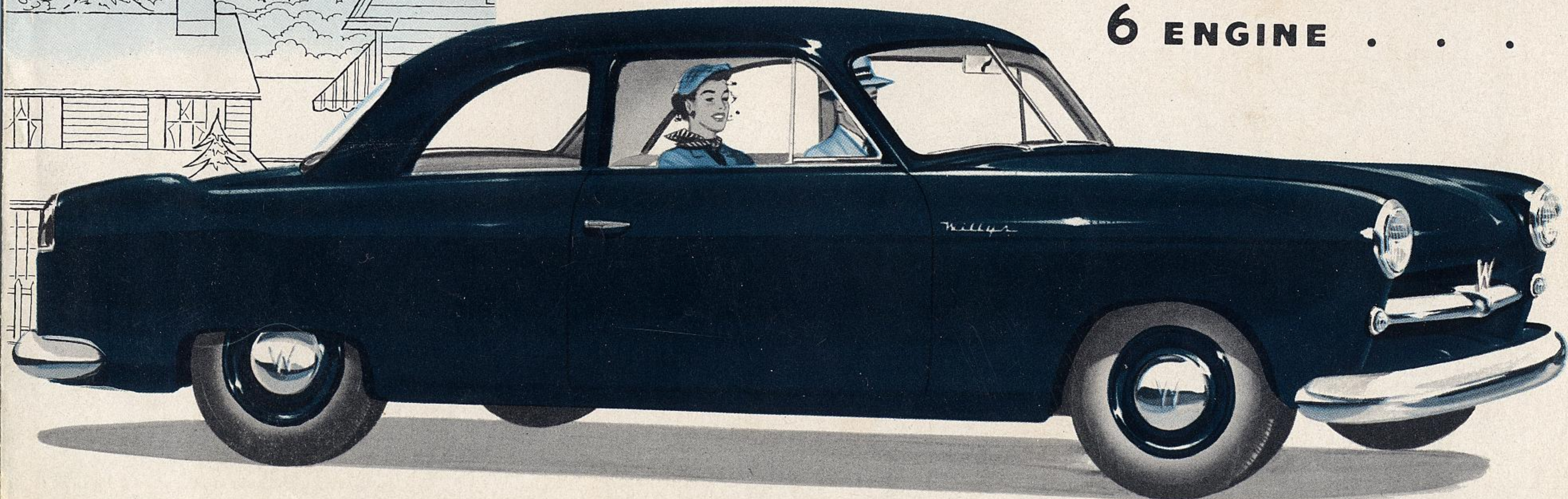


HOYT MOTORS

*Willys* PRESENTS A GREAT  
CAR VALUE - *Aero-Lark*

POWERED BY THE  
FAMOUS LIGHTNING  
6 ENGINE . . .

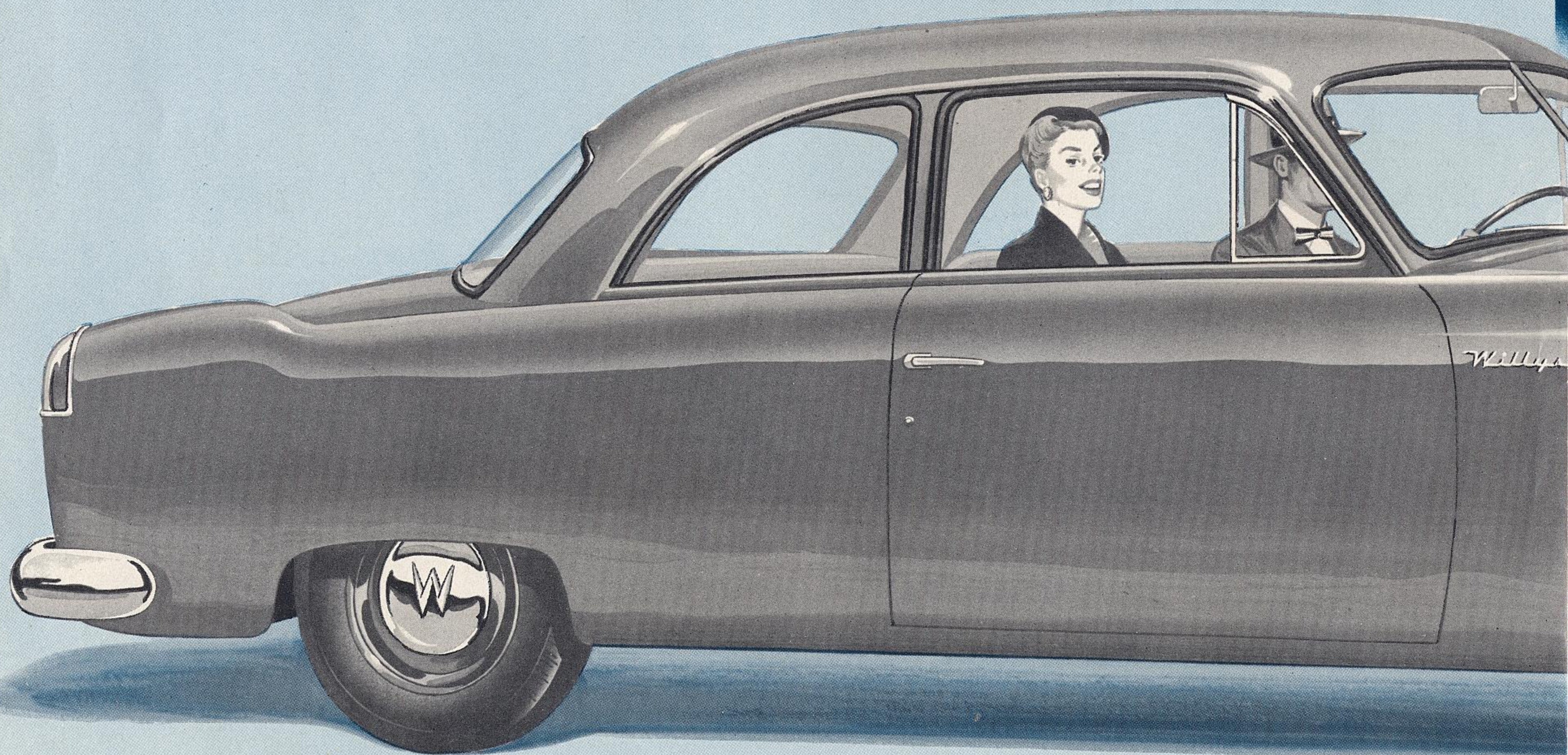




# The Aero-Lark

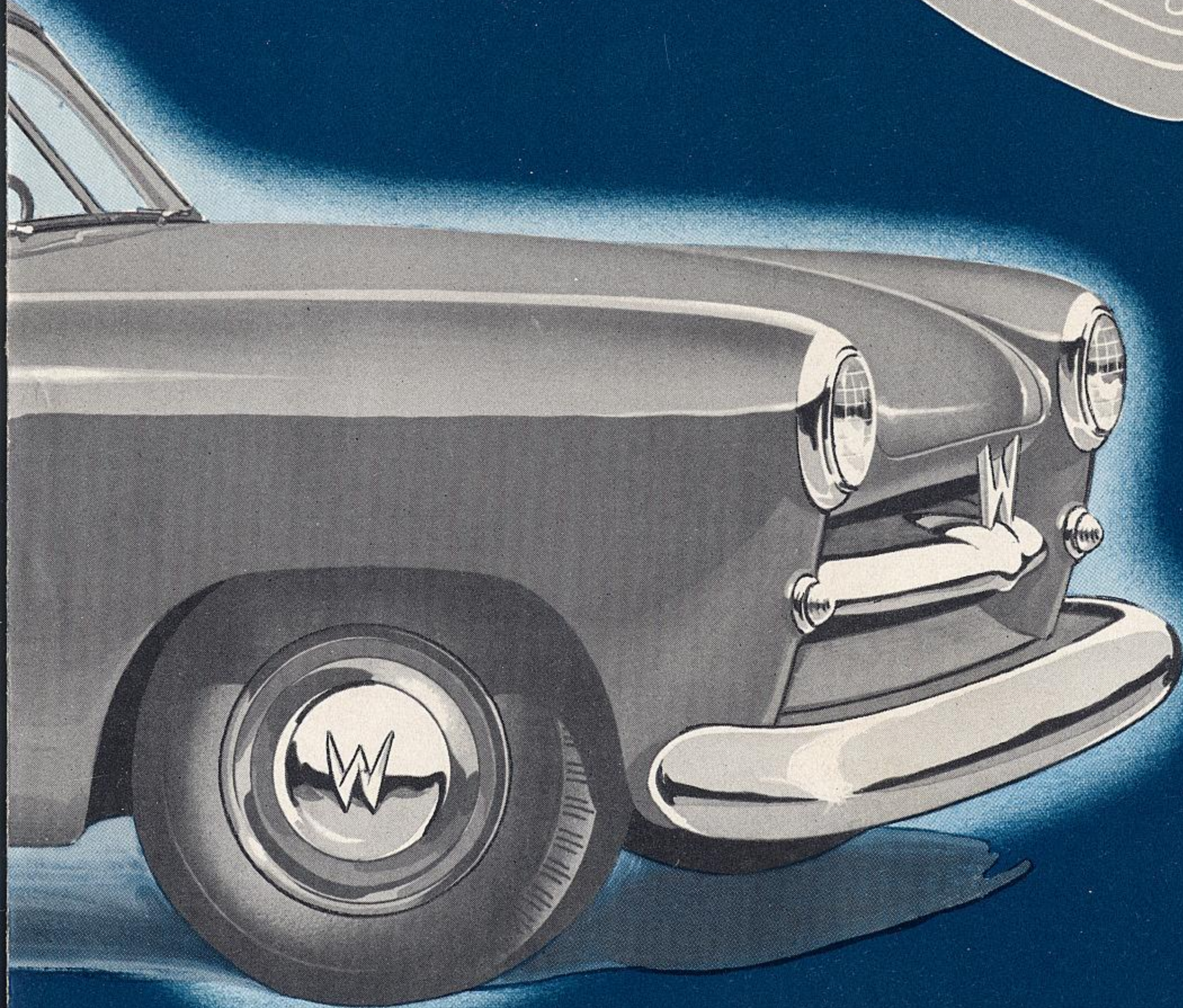
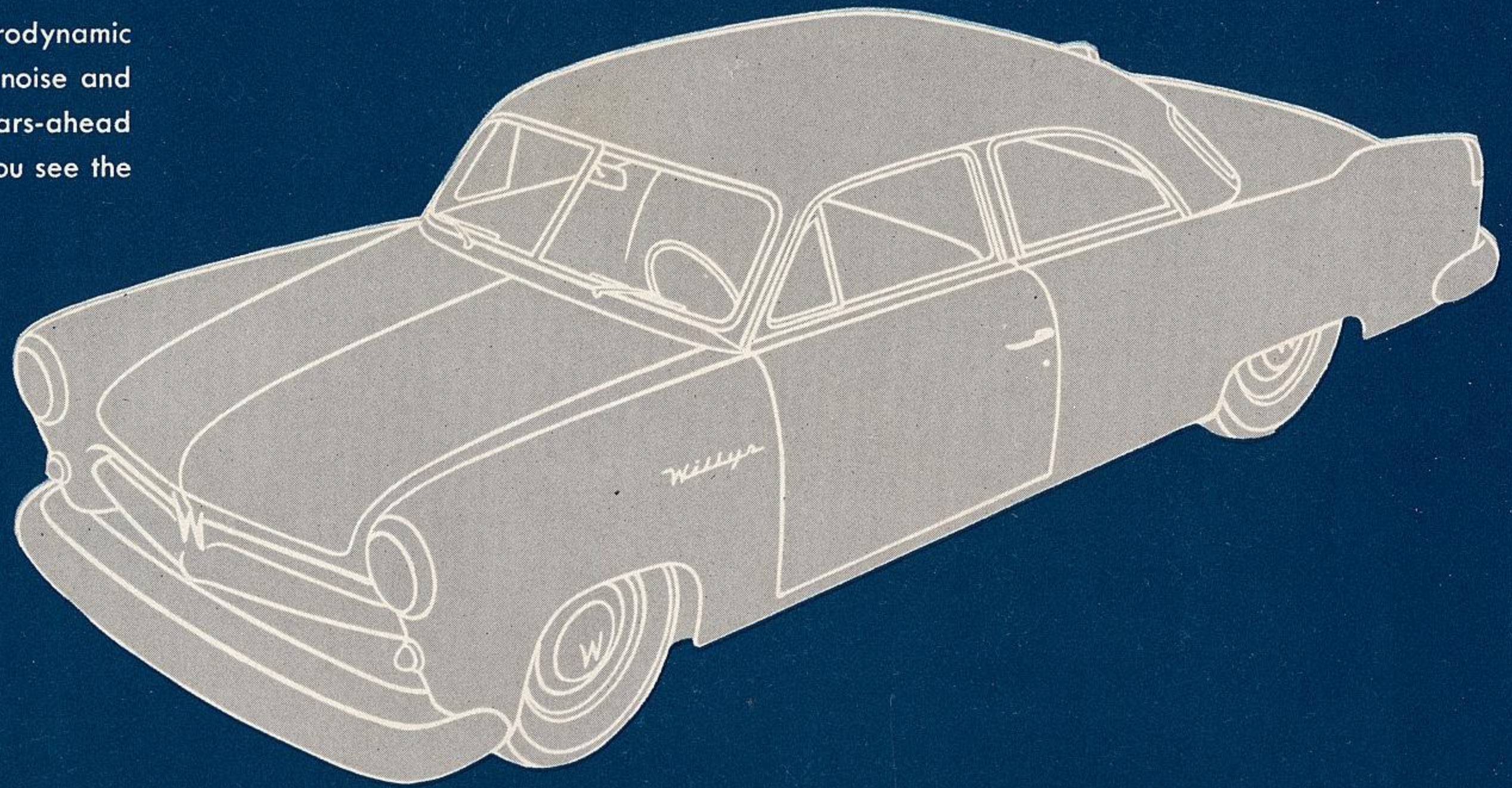


Feature for feature, no other make of car offers you so much for your money . . . in modern beauty of design . . . in ease and safety of driving . . . in passenger comfort . . . and in low cost of operation. The blending of aero and auto engineering has produced in the *Aero-Lark* a new high mark in value and satisfaction unmatched by any competitive 6-passenger car.





**THE AERO-LARK** has the flowing beauty of aerodynamic streamlining that lessens wind resistance and wind noise and contributes to longer fuel mileage. Note the years-ahead design of the sloping plane-wing hood that lets you see the road only ten feet ahead of your bumper.



**PANORAMIC VISIBILITY** in all directions is one of the safety features of the Aero-Lark. The wide curved windshield and extremely large rear window give you a full view of the road ahead and back of you, and broad, deep side windows complete the around-the-compass visibility of the Aero-Lark.



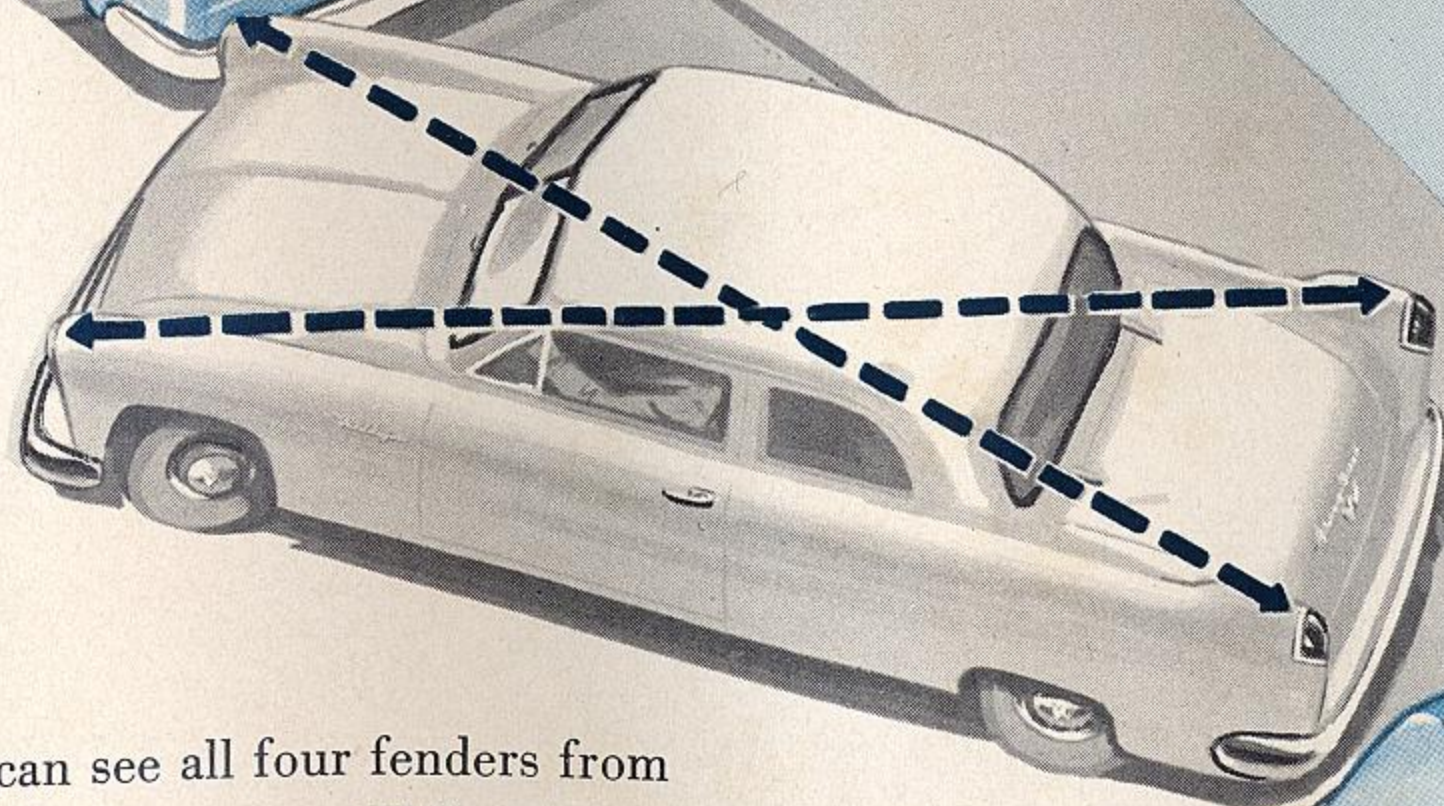
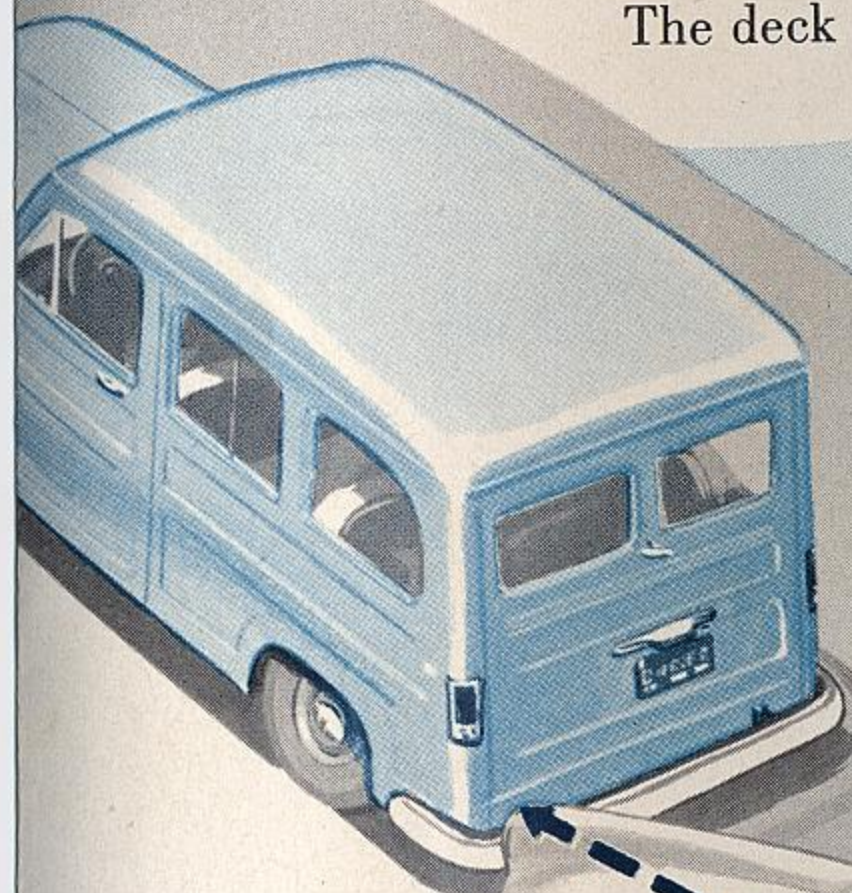


The extra large luggage space in the *Aero-Lark*—24 cu. ft. in size—carries everything your family needs for a long trip. The deck lid is self-latching.



No other car in its price class offers such large total seating space! The 61-inch-wide seating width of both front and rear seats means real roominess for six adults.

**Willys** designed the *Aero-Lark* to be the top-ranking value car in the low-priced field. Check the advantages it offers—many of them found only in expensive cars—and you will see how much more you get in the *Aero-Lark*.



You can see all four fenders from the driver's seat—a Willys innovation that means easier parking and safer handling on the highway. Its effortless steering makes the *Aero-Lark* a delight to drive.



The gas filler cap is near the center of the car at the rear, easy to reach from either side. License light illuminates opening.

You start the *Aero-Lark* with just a turn of the key! Follow-through action of the starter assures quick, sure starting of the engine at all times.





## QUALITY FEATURES

That Make the Aero-Lark America's  
Top-Value Low-Priced Car

**ALUMINUM PISTONS** give smoother engine performance. Chrome-plated compression rings lengthen engine ring life and increase oil economy.

**FLOATING OIL INTAKE** insures cleaner oil circulating through bearings and increases engine life.

**QUICKER WARM-UP** is assured by a bypass water recirculator that brings engine to proper temperature faster.

**AUTOMATIC SPARK ADVANCE** gives timing adjusted for both speed and throttle opening and adds to gasoline mileage.

**BAKED ENAMEL FINISH** for long-lasting beauty and brilliance.

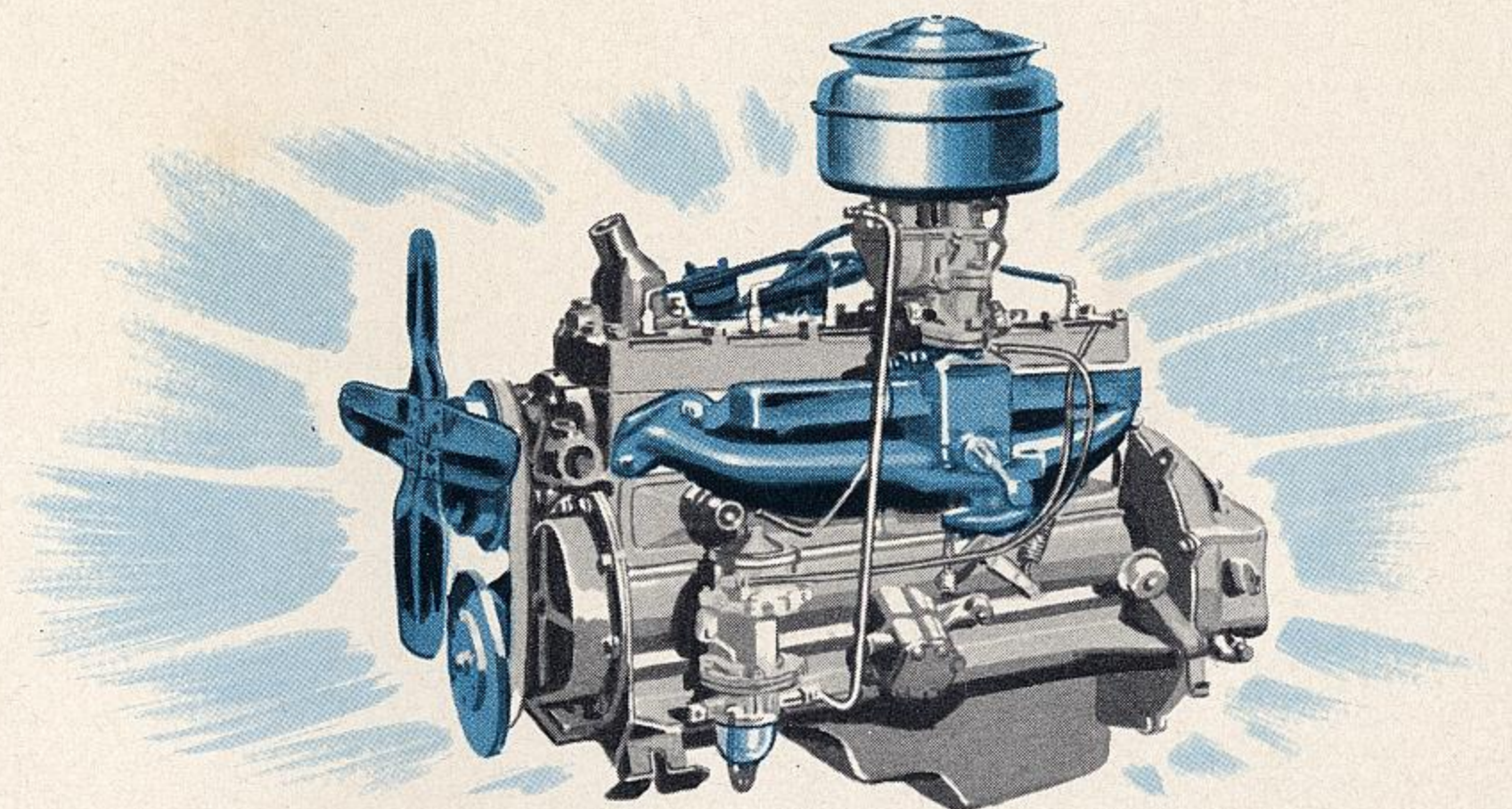
**INSTRUMENT PANEL** directly in front of driver . . . recessed to avoid glare . . . red warning lights flash when oil pressure is low or generator not charging.

**FIRM-LATCHING DOORS** with hold-open device . . . key locks on both doors.

**RAM-JET COOLING** through wide air-scoop improves engine cooling at high speeds in hot weather.

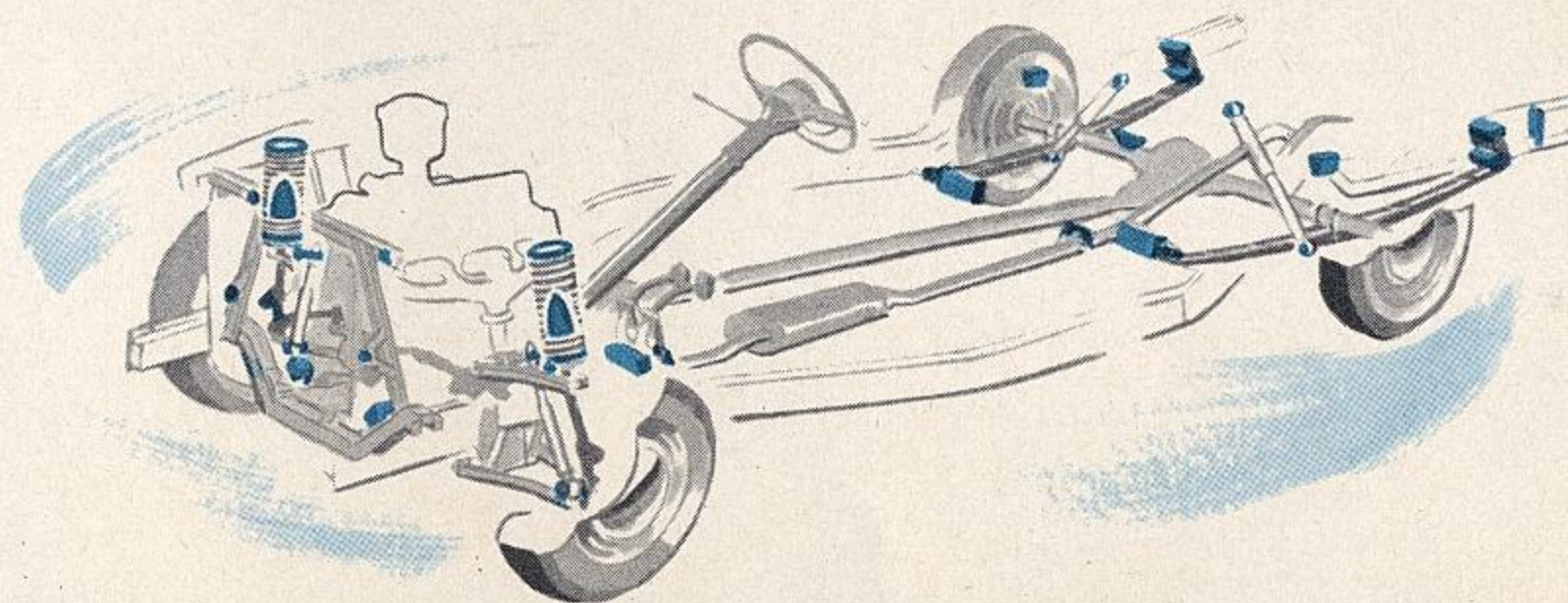
**DUAL FRESH-AIR INTAKES** pour clean air into the car. Optional at slight extra cost.

# Smooth, Silent Power and Low-Cost Operation! *Lightning "6" Engine*



The fuel economy, long life and low maintenance costs of the *LIGHTNING* 6-cylinder 75 hp Engine have been conclusively proved by millions of miles of service in Willys vehicles. This time-tested power plant is designed for high efficiency in use of fuel, for maximum oil

economy and low-cost upkeep through years of driving. The *LIGHTNING* 6 gives the *Aero-Lark* smooth, quiet power for surging pickup and brilliant road performance . . . together with the long mileage that has made Willys vehicles world-famous for money-saving operation.



## RUBBER INSULATORS SUPPRESS VIBRATION AND NOISE

Rubber mountings and couplings are used throughout the chassis components to suppress noise and vibration. The *LIGHTNING* 6 Engine is mounted on rubber cushions that suppress vibration at all speeds, and rubber is used in

spring and shock absorber couplings and other critical points to add to the smoothness of the comfortable, "airborne" ride you enjoy in the *Aero-Lark*. Rubber is used at many points to eliminate need for periodic lubrication.





### YOU RIDE BETWEEN THE AXLES

In the *Aero-Lark*, all passengers ride between the axles for smooth, restful comfort. Seats are designed for natural posture that leaves you feeling fresh after long, all-day drives.



### LONG-COIL FRONT SUSPENSION

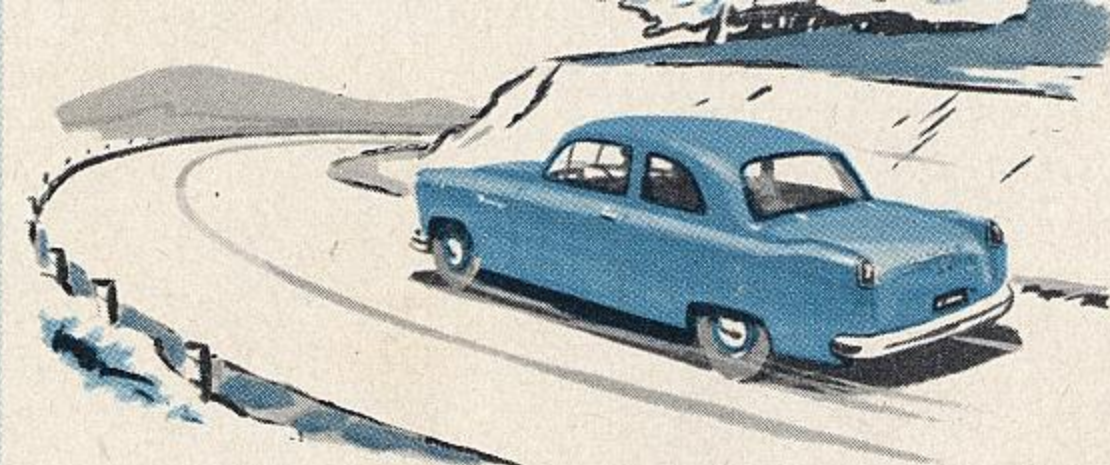
Extra-long front coil springs, insert-type rear leaf springs and auto-compensating direct-action shock absorbers give you a ride so free of bumps and road roughness you feel almost airborne!



## Aero-Frame CONSTRUCTION

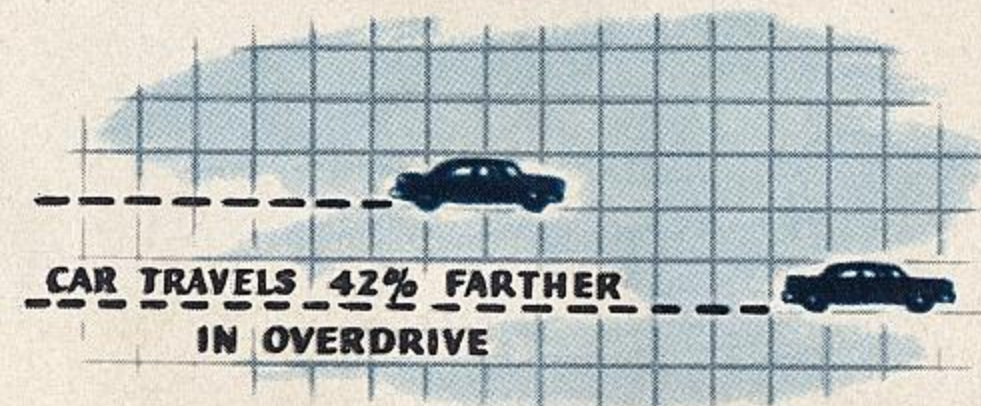


Willys brings you one of the greatest advances in car building in years—construction based on principles similar to those used for airliners. The body and frame members are welded into one rigid, exceptionally strong unit. Willys Aero-Frame Construction eliminates needless, gas-eating weight . . . gives you a sturdy car structure free of annoying body-bolt squeaks and rattles.



### LOW 23-IN. CENTER OF GRAVITY

The center of gravity in the *Aero-Lark* is just 23 inches from the ground, giving you better road-holding qualities and more safety on curves. You drive with assurance on all types of road.



### CRUISING GEAR SAVES FUEL

With overdrive transmission—optional at low extra cost—you have a “cruising gear” that travels you 42 per cent farther for each turn of the engine. Engine speed is reduced almost a third without cutting car speed. You get greater gas and oil mileage and lengthen engine life.

## S P E C I F I C A T I O N S O F T H E W I L L Y S A E R O - L A R K

### MECHANICAL

**ENGINE:** LIGHTNING 6 cylinder; L-head design. 75 horsepower. Compression ratio, 6.9 to 1. Bore  $3\frac{1}{8}$ "", stroke  $3\frac{1}{2}$ ". Piston displacement 161 cu. in. Aluminum heat-dam pistons; two compression rings (top ring chrome plated, spring-backed oil ring.) Full-length water jackets. Oil capacity, refill, 5 qts. 18-gallon gasoline tank.

**TRANSMISSION:** 3-speed synchromesh gears. Overdrive optional at extra cost.

**REAR AXLE:** Semi-floating, hypoid gears. Standard axle ratios—4.1 without overdrive, 4.56 with overdrive.\* Optional axle ratio available at factory—4.56, without overdrive, for mountainous country.

**ELECTRICAL SYSTEM:** 35-ampere generator. Key

starting; follow-through starter for positive starting. Automatic spark advance. Sealed-beam headlights.

**SPRINGING:** Front long-coil direct-acting springs; rubber bumper limits compression. Insert-type semi-elliptic springs at rear. Direct-acting, full-displacement shock absorbers with auto-compensating control.

**WHEELBASE:** 108 inches. Tread, 58 in. front, 57 in. rear.

### BODY

**STRUCTURE:** Aero-frame construction, body and chassis members welded into one strong, rigid unit.

**INTERIOR DIMENSIONS:** Front seating width, 61 inches. Rear seating width, 61 inches. Headroom,  $35\frac{1}{2}$  inches front,  $34\frac{1}{2}$  inches rear. Luggage compartment 24 cu. ft. capacity; self-locking lid.

**EXTERIOR DIMENSIONS:** Height, loaded, 60 inches. Width, 72 inches. Overall length, including bumpers,  $180\frac{7}{8}$  inches. Windshield width,  $55\frac{3}{4}$  inches. Rear window,  $52\frac{1}{8}$  inches.

### EQUIPMENT

**STANDARD:** Indirect-lighted instrument panel; warning lights for generator charge and oil pressure. Dual windshield wipers. Dual combination stop and tail lights. Gas-filler cap near center at rear. Dash ash tray. Driver sun visor.

**OPTIONAL AT EXTRA COST:** Overdrive transmission. Bumper guards. Dual horns. Fresh-air ducts and control. Glove box. Heater and defroster. Front arm rests. Hood ornament. Oil filter. Dual sun visor. Vacuum booster fuel pump. Turn signals.

*Specifications and trim subject to change without notice.*

WILLYS-OVERLAND MOTORS, INC., TOLEDO, OHIO, U. S. A.

PRINTED IN U. S. A.